

Loch Lomond and the Trossachs National Park

Inverarnan



275 kV overhead line ascending the steel slopes north of Cruach

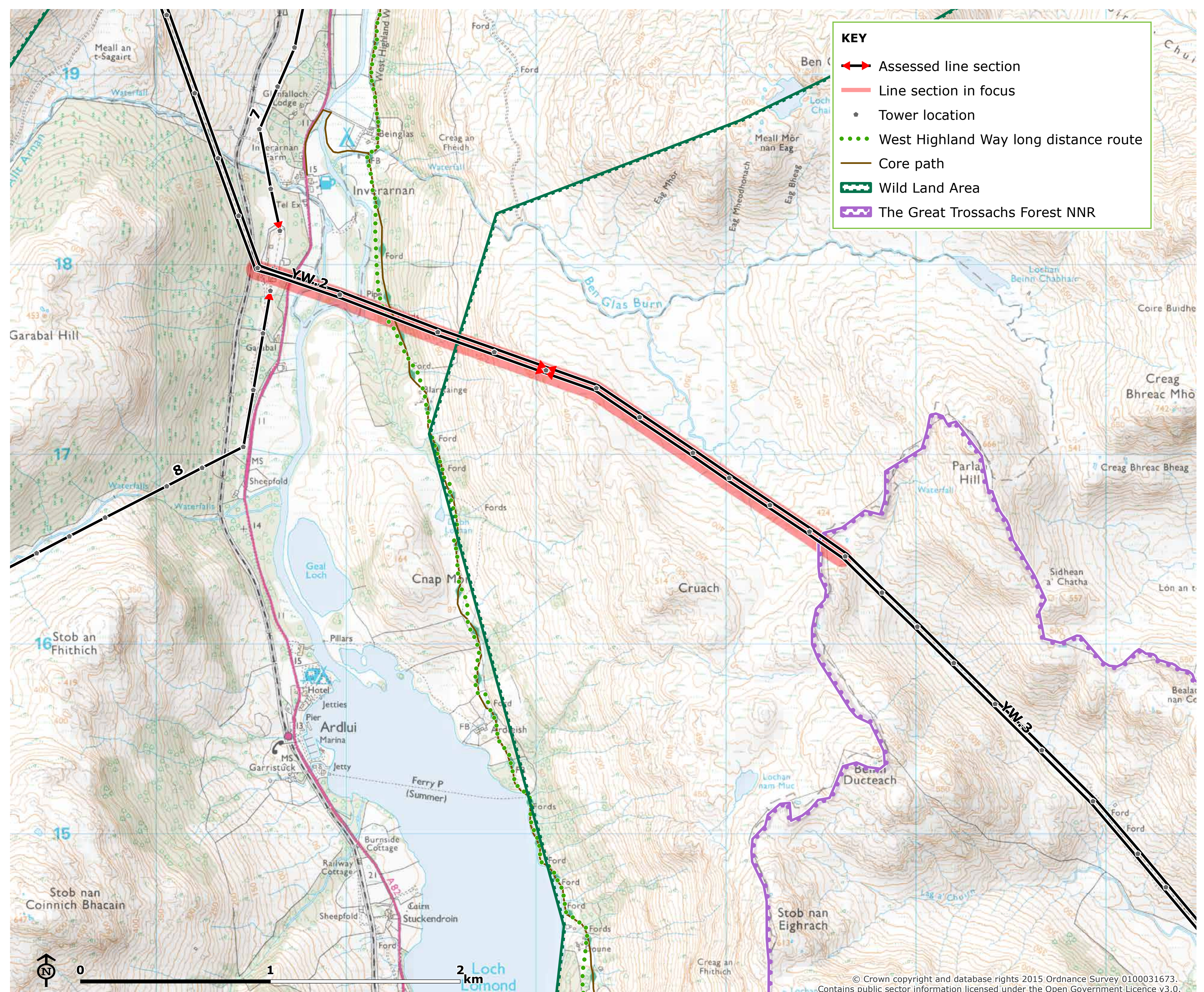
Landscape and visual context

The 275 kV line crosses the southern end of Glen Falloch, a dramatic, steep sided upland glen between elevated summits, with waterfalls cascading to the glen floor. The line falls from approximately 380 m AOD on the eastern side of the glen, to 10 m AOD in the glen floor, before rising again to approximately 250 m AOD on the western side of the glen at Troisgeach Bheag. The line crosses rugged rocky outcrops and moorland on the upper glen sides, and pasture, broadleaved woodland, the River Falloch and A82 trunk route on the lower glen sides and glen floor. Other infrastructure including 132 kV overhead lines also cross the glen.

Landscape and visual impacts

The scale of the pylons is generally accommodated within the large scale glen, particularly those located across the settled glen floor which contains small settlements and the A82 road corridor along the River Falloch. When ascending the eastern slopes of the glen the pylons are more visible and incongruous with the wild and remote qualities that extend into the mountainous upland areas. Overall the landscape impact is **Medium**.

This section of overhead line is accommodated in the settled glen floor, and is in scale with other elements such as trees and farmsteads, although some visual conflicts occur, particularly with the 132 kV overhead lines. On the rugged ridges above the glen the pylons diminish the scale of the hills and detract from the scenic backdrop to the glen. Overall the visual impact is **Medium**.



Mitigation proposals



Undergrounding

A

Undergrounding of 9 km section of OHL from Inverarnan substation eastwards over the ridge north of Cruach and into Glen Gyle.

Alternative pylon design

B

Alternative/bespoke pylon tower design for overhead line between Inverarnan Substation and the rugged ridge of Cruach to the east (i.e. Icelandic marching men pylon concept design).

Landscape enhancement

C

Further landscape enhancement around Inverarnan substation, along Great Glen Way and potentially tied into A82 upgrading.

New installation

D

Creation of a sculptural incident or installation, in a similar vein and tying into the Scottish Scenic Routes initiative.