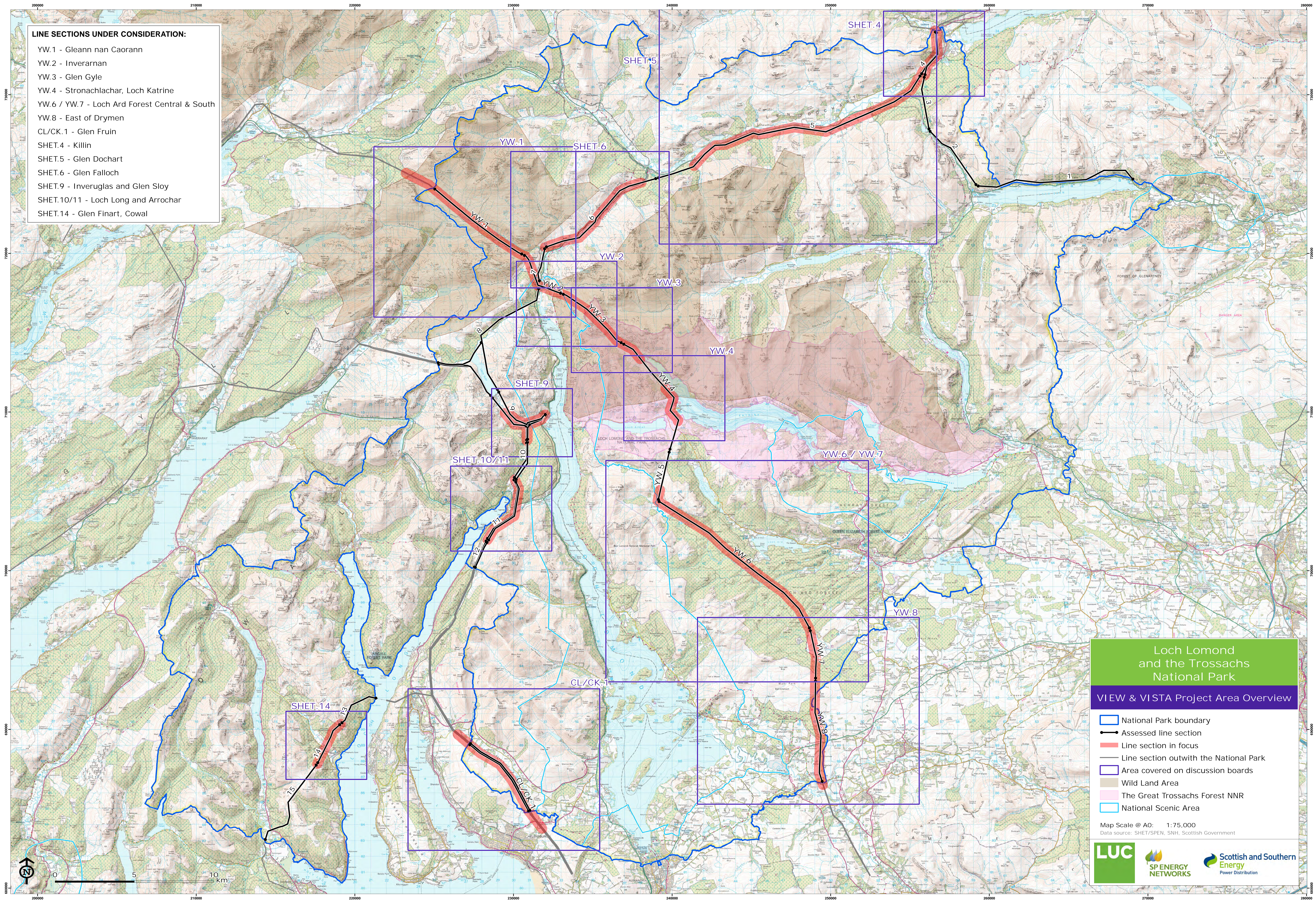


LINE SECTIONS UNDER CONSIDERATION:

- YW.1 - Gleann nan Caorann
- YW.2 - Inverarnan
- YW.3 - Glen Gyle
- YW.4 - Stronachlachar, Loch Katrine
- YW.6 / YW.7 - Loch Ard Forest Central & South
- YW.8 - East of Drymen
- CL/CK.1 - Glen Fruin
- SHET.4 - Killin
- SHET.5 - Glen Dochart
- SHET.6 - Glen Falloch
- SHET.9 - Inveruglas and Glen Sloy
- SHET.10/11 - Loch Long and Arrochar
- SHET.14 - Glen Finart, Cowal



Loch Lomond and the Trossachs National Park

VIEW & VISTA Project Area Overview

- National Park boundary
- Assessed line section
- Line section in focus
- Line section outwith the National Park
- Area covered on discussion boards
- Wild Land Area
- The Great Trossachs Forest NNR
- National Scenic Area

Map Scale @ A0: 1:75,000
 Data source: SHET/SPEN, SNH, Scottish Government

