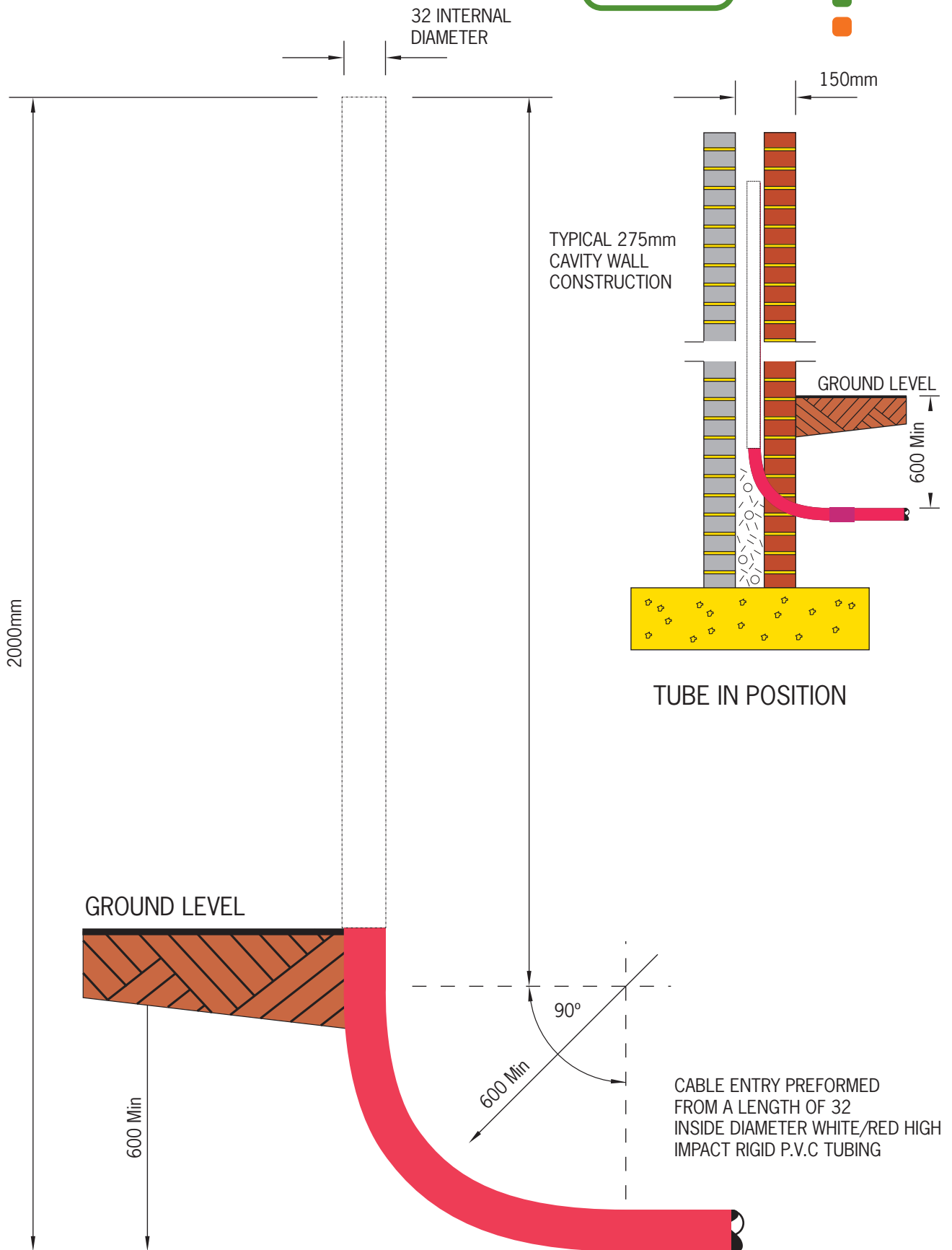
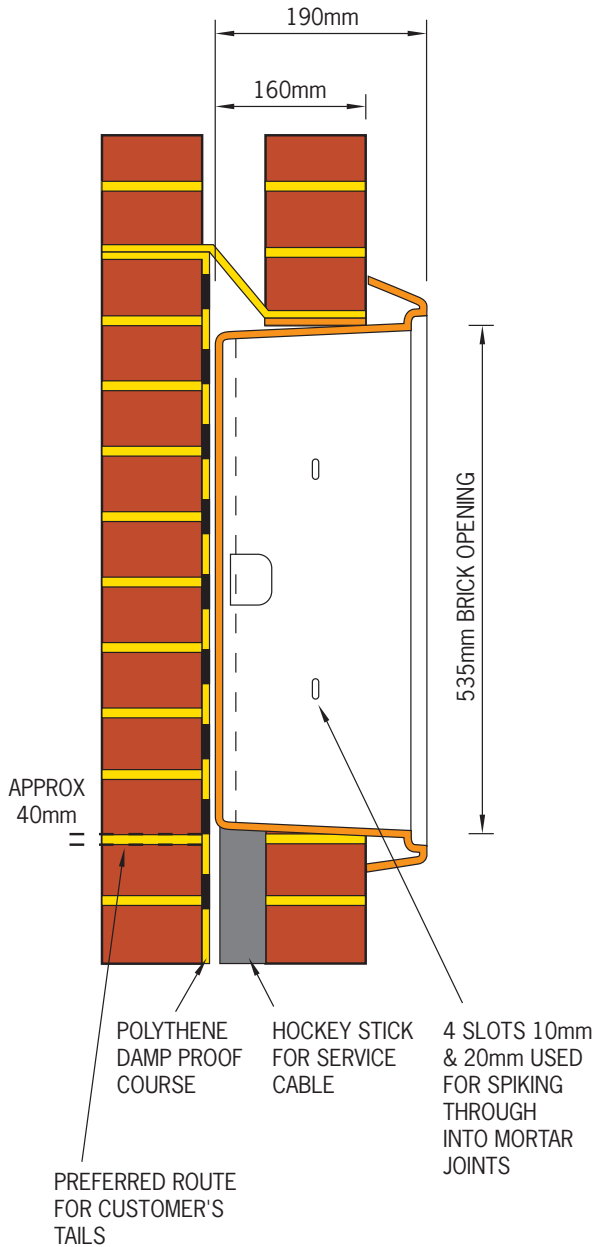


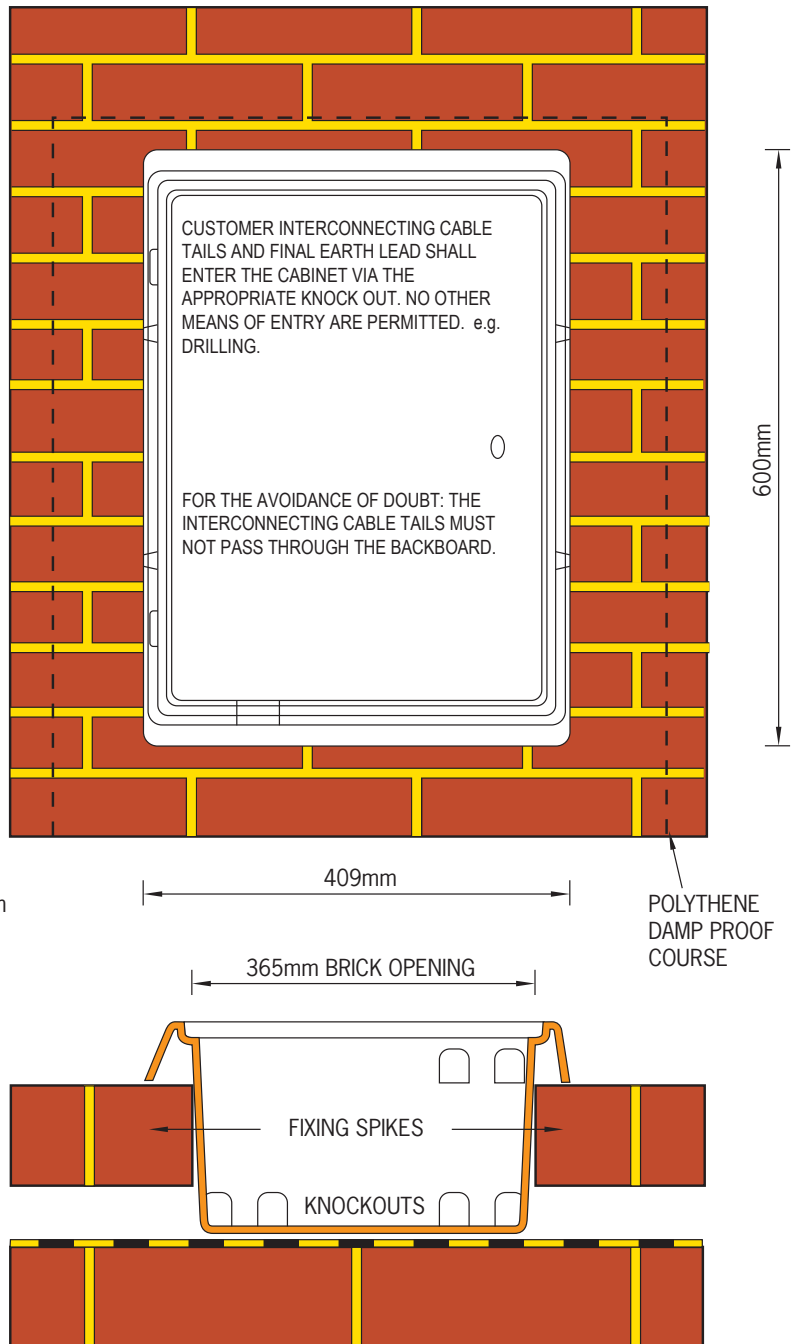
# Hockey Stick



# Outdoor Meter Cabinet Installation



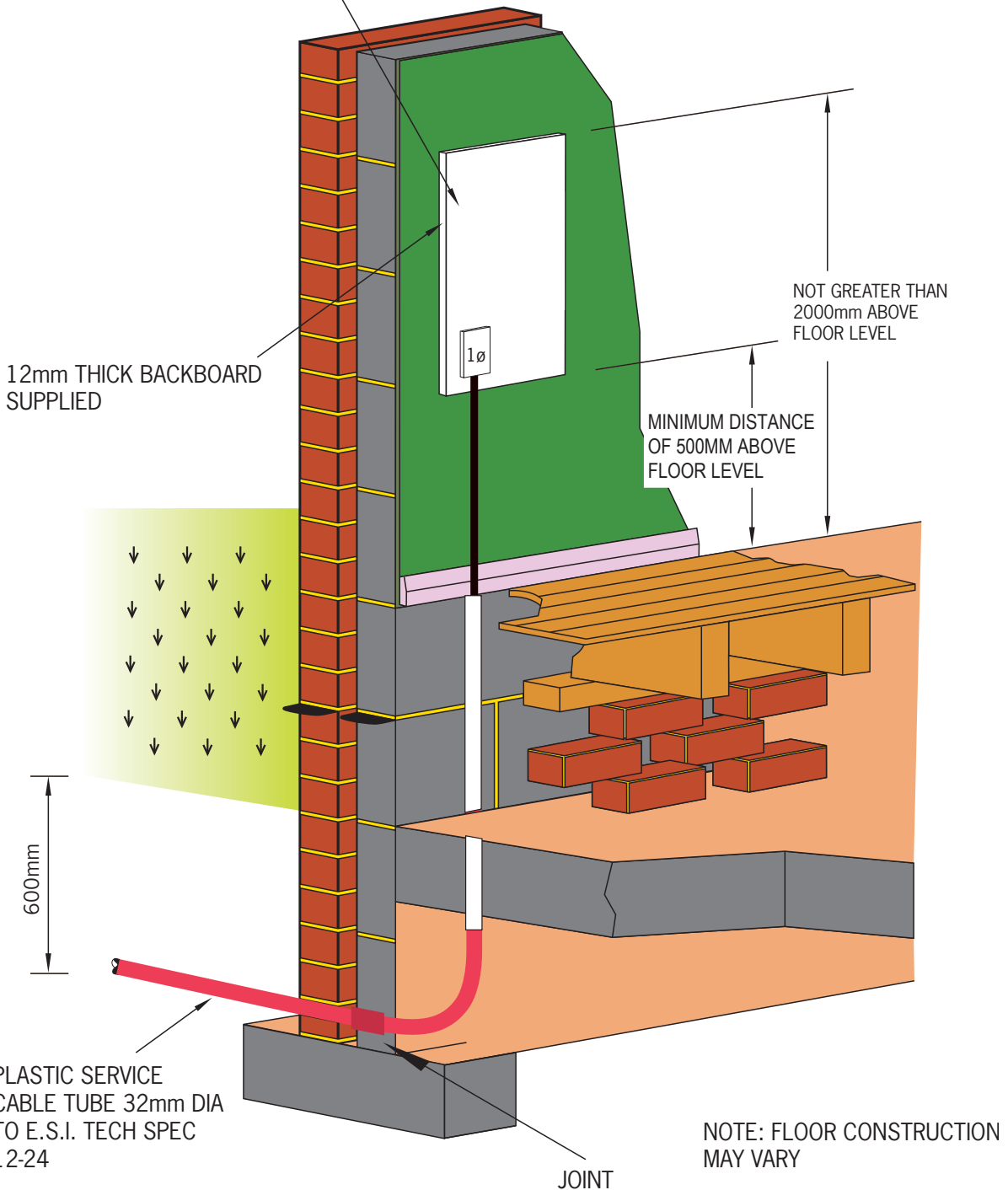
NOTE:- TOP OF CABINET NOT MORE THAN 2 METRES OR LESS THAN 1.25 METRES ABOVE GROUND LEVEL



# Indoor 1 Phase Meter Position

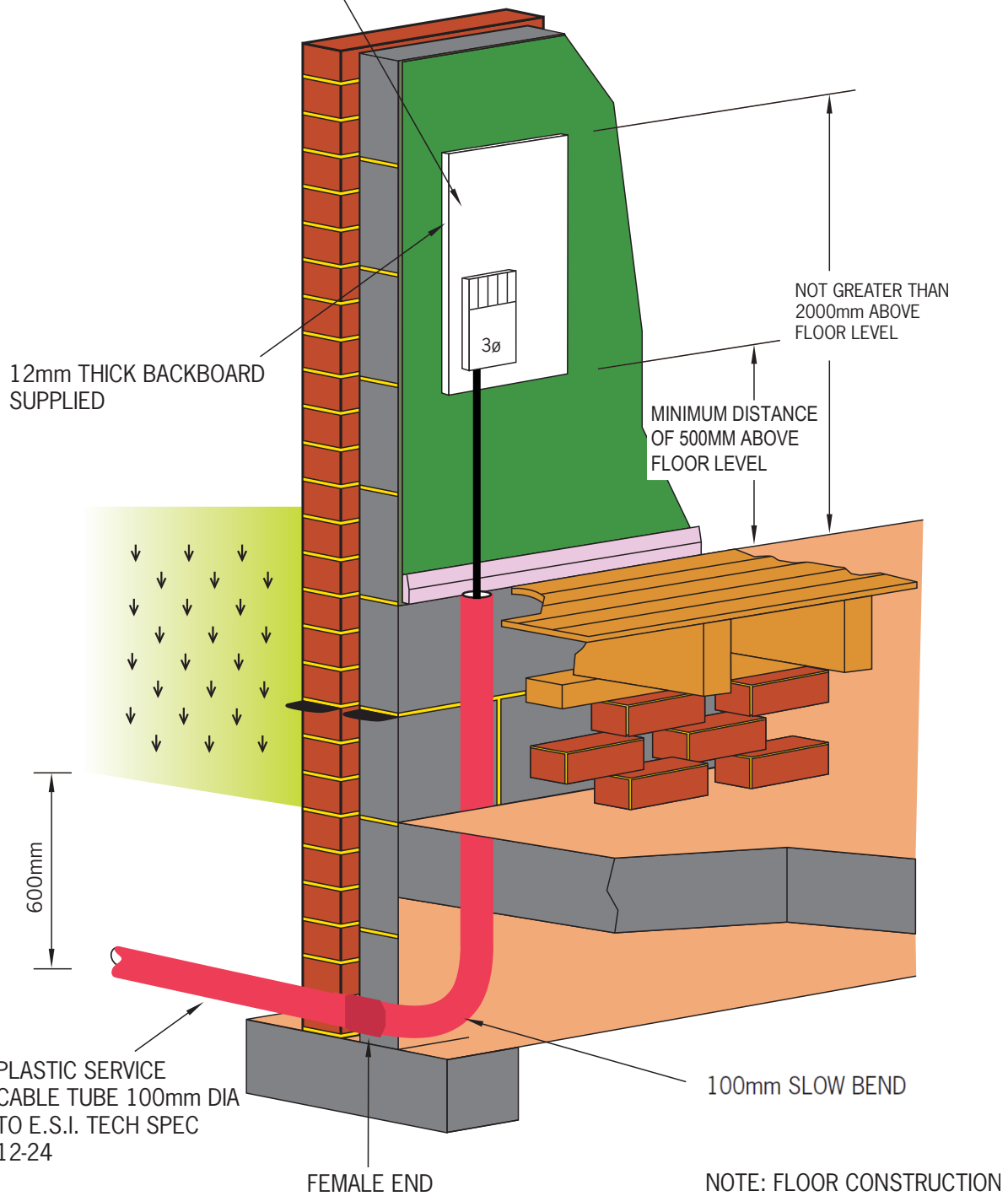
**MINIMUM SPACE REQUIRED**

700mm HIGH x 500mm WIDE  
x 200mm DEEP WITH 750mm  
FRONT ACCESS



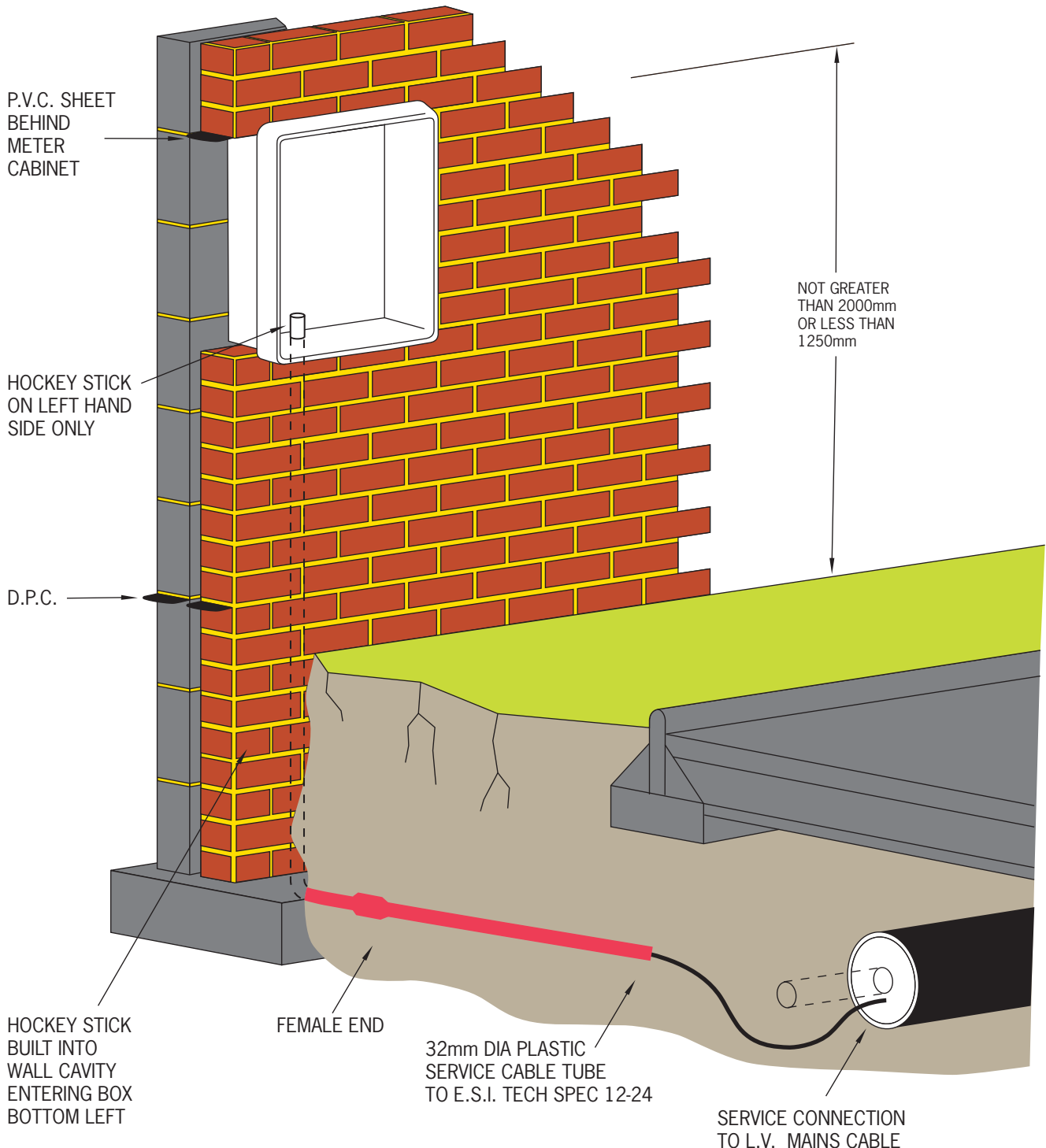
# Indoor 3 Phase Meter Position

**MINIMUM SPACE REQUIRED**  
700mm HIGH x 700mm WIDE  
x 200mm DEEP WITH 750mm  
FRONT ACCESS



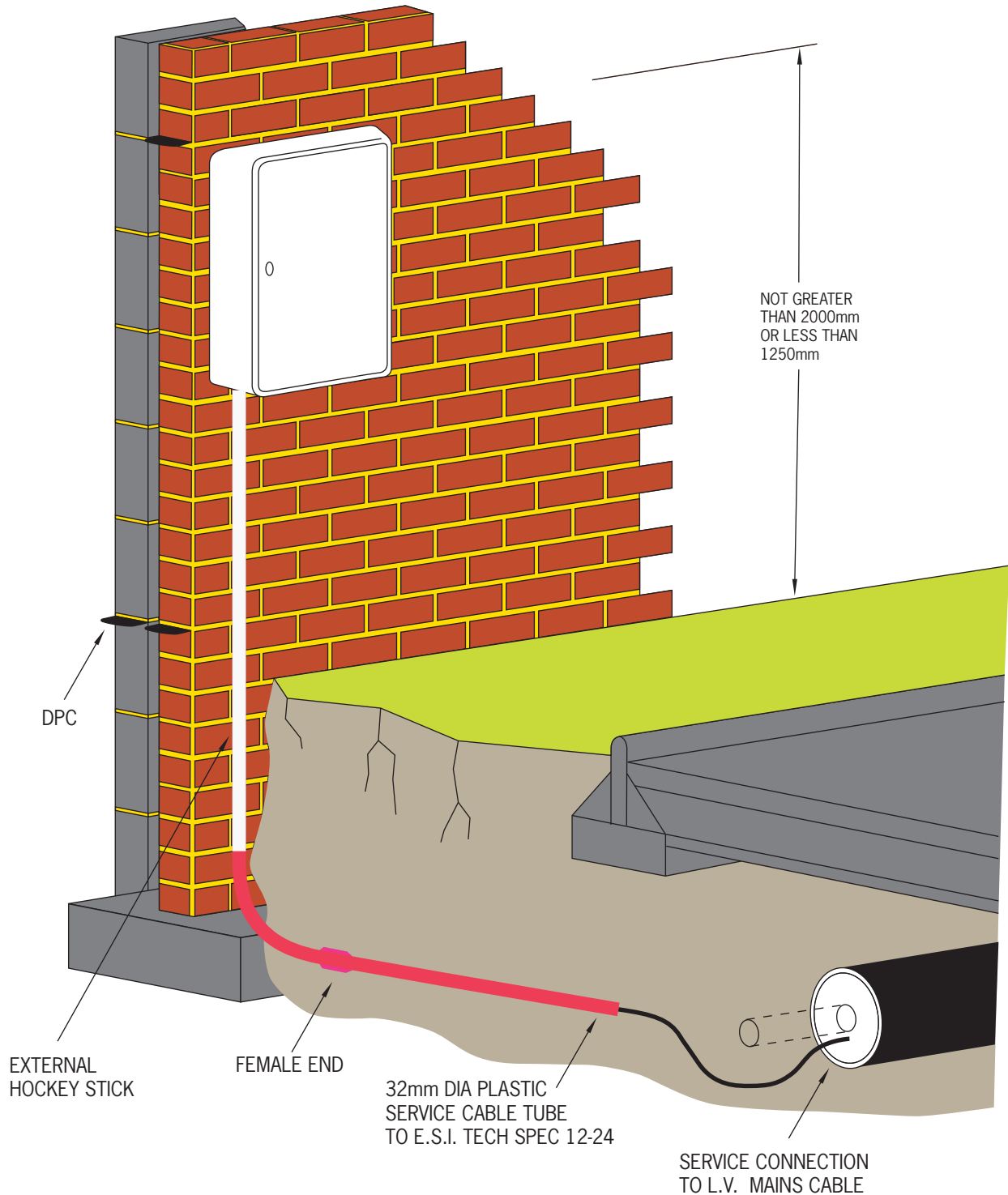
# Outdoor Cavity Meter Cabinet

NOTE:- L.H. HINGED CABINET DOOR REMOVED FOR CLARITY



CUSTOMERS METER TAILS SHOULD NOT EXCEED 2 METRES

# Outdoor Surface Mounted Meter Cabinet



CUSTOMERS METER TAILS SHOULD NOT EXCEED 2 METRES