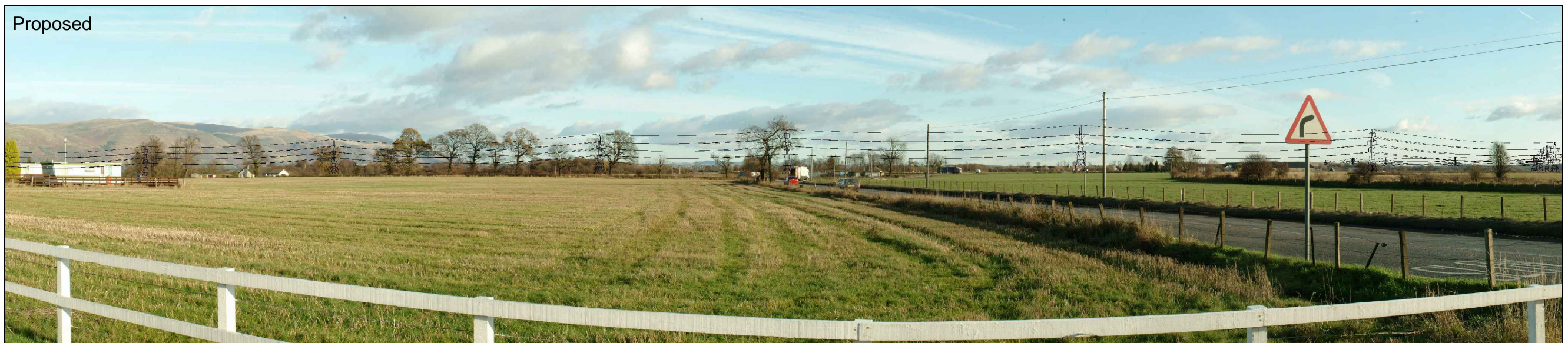


Existing



Proposed



A905, edge of Stirling (ES Viewpoint 99 Figure 24.1-099 )

*Note: Towers and conductors as proposed are represented by a graphic model and are not true visual images*

Existing



Proposed



Fallin looking north (ES Viewpoint 100A Figure 24.1-100A)

*Note: Towers and conductors as proposed are represented by a graphic model and are not true visual images*

Existing



Proposed



Fallin looking south (ES Viewpoint 100B Figure 24.1-100B)

*Note: Towers and conductors as proposed are represented by a graphic model and are not true visual images*