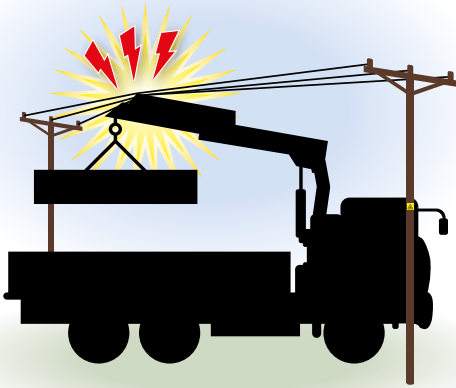
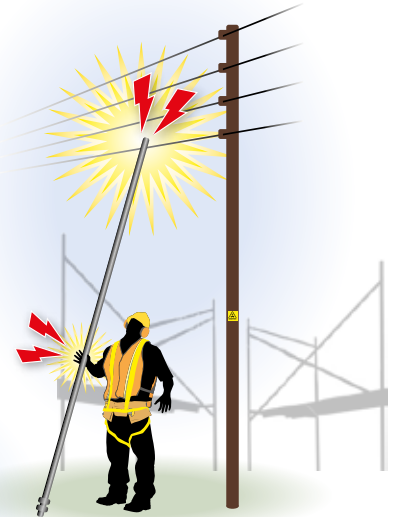


# LOOK OUT! LOOK UP!

Follow the advice in HSE Guidance Note GS6  
'Avoidance of Danger from Overhead Electric Power Lines'



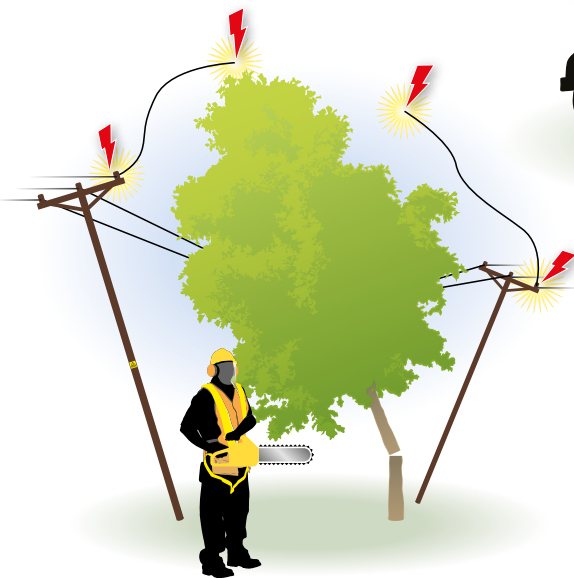
Keep overhead lines in view when unloading



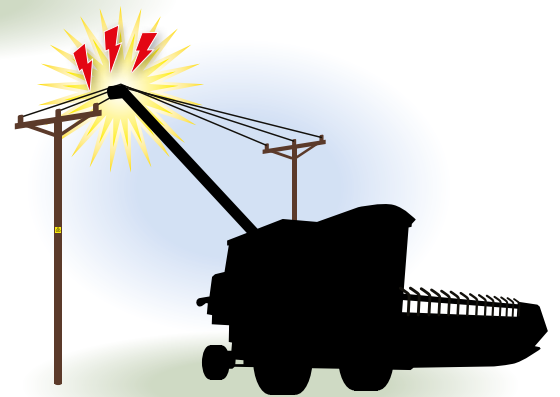
Carry long objects in a horizontal position near overhead lines



Don't tip under overhead lines and don't drive along with tipper raised



Check falling distance before felling trees



Check maximum height and reach of your own and contractors machinery



Look out for the Danger of Death sign – it means what it says. If in doubt contact us for free safety advice.

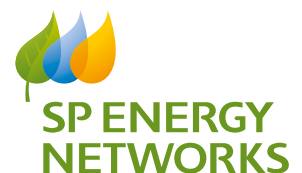
Visit: [www.spenergynetworks.com](http://www.spenergynetworks.com)

Email: [customer.care@sppowersystems.com](mailto:customer.care@sppowersystems.com)

General Network Enquiries (England, Wales & Scotland): 0845 273 4444

Power Loss & Emergencies (England & Wales): 0845 272 2424

Power Loss & Emergencies (Scotland): 0845 272 7999



# WATCH OUT! THERE'S A CABLE ABOUT!

Follow the advice in HSE Guidance Note HSG47 'Avoiding Danger from Underground Services'

## REMEMBER

Houses, offices, shops, factories and street furniture all have electric cables supplying them.

## CHECK PLANS

Ensure current cable records are on site.

Carry out a risk assessment in accordance with HSG47. Be aware that not all cables are shown on plans.

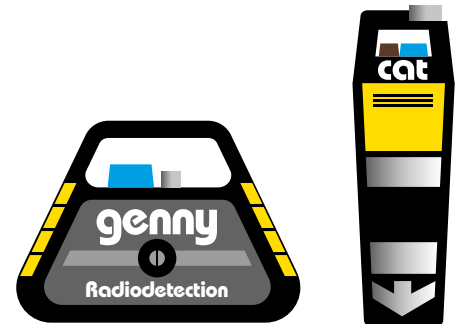


## USE CABLE LOCATORS

Before every use of CAT and Genny make sure they are calibrated and working properly.

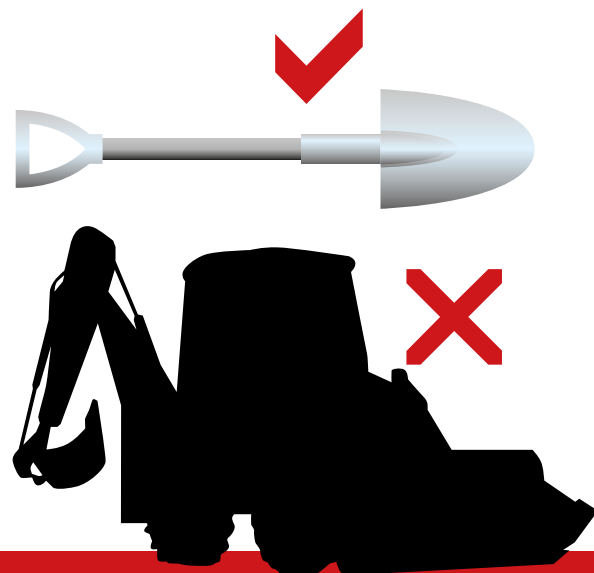
Check plans by tracing cables and marking their position using paint, crayon, chalk or pegs.

Always scan the area you intend to excavate **before** you start to dig.



## NOW DIG SAFELY

- ❗ Hand-dig trial holes to find the exact position of cables **before** you use a mechanical excavator.
- ❗ Be aware that cables can be found at any depth, even just below the surface.
- ❗ If you find a cable embedded in concrete **do not** attempt to break it out. Contact us to ensure it is de-energised.
- ❗ If you cannot find cables shown on the plan **never assume** they are not there – contact us.
- ❗ If you damage a cable vacate the excavation, immediately phone our emergency number and keep everybody clear.



Visit [www.spenergynetworks.com/safety/saferexcavations](http://www.spenergynetworks.com/safety/saferexcavations) or contact us for free safety advice.

Visit: [www.spenergynetworks.com](http://www.spenergynetworks.com)

Email: [customer.care@sppowersystems.com](mailto:customer.care@sppowersystems.com)

General Network Enquiries (England, Wales & Scotland): 0845 273 4444

Power Loss & Emergencies (England & Wales): 0845 272 2424

Power Loss & Emergencies (Scotland): 0845 272 7999

