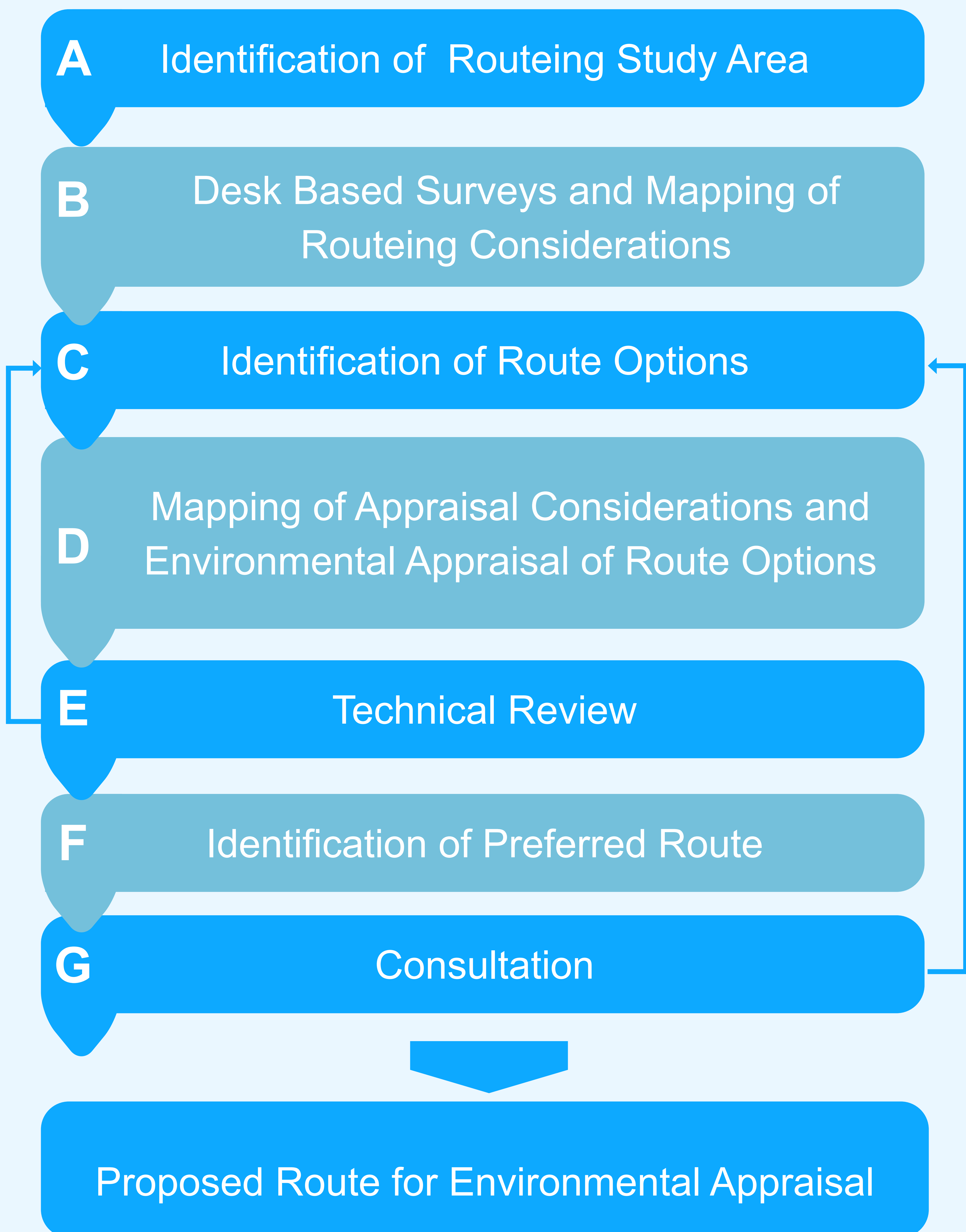


## 6 Routeing Methodology

SPEN has been working with independent consultants to identify potential route options for the new OHL. Our objective is to identify a route for the new OHL which meets the technical requirements of the electricity system, which is economically viable and causes, on balance, the least disturbance to the environment and the people who live, work and enjoy recreation within it.

An overview of the routeing methodology for the new OHL is illustrated below, with full details included in the Routeing and Consultation Document (2023).

### Routeing Methodology



## **Harestanes West Wind Farm 132kV Overhead Line Grid Connection**

[www.spenenergynetworks.co.uk](http://www.spenenergynetworks.co.uk)