

## Loch Lomond and the Trossachs National Park

## Gleann nan Caorann



275 kV overhead line passing through Gleann nan Caorann

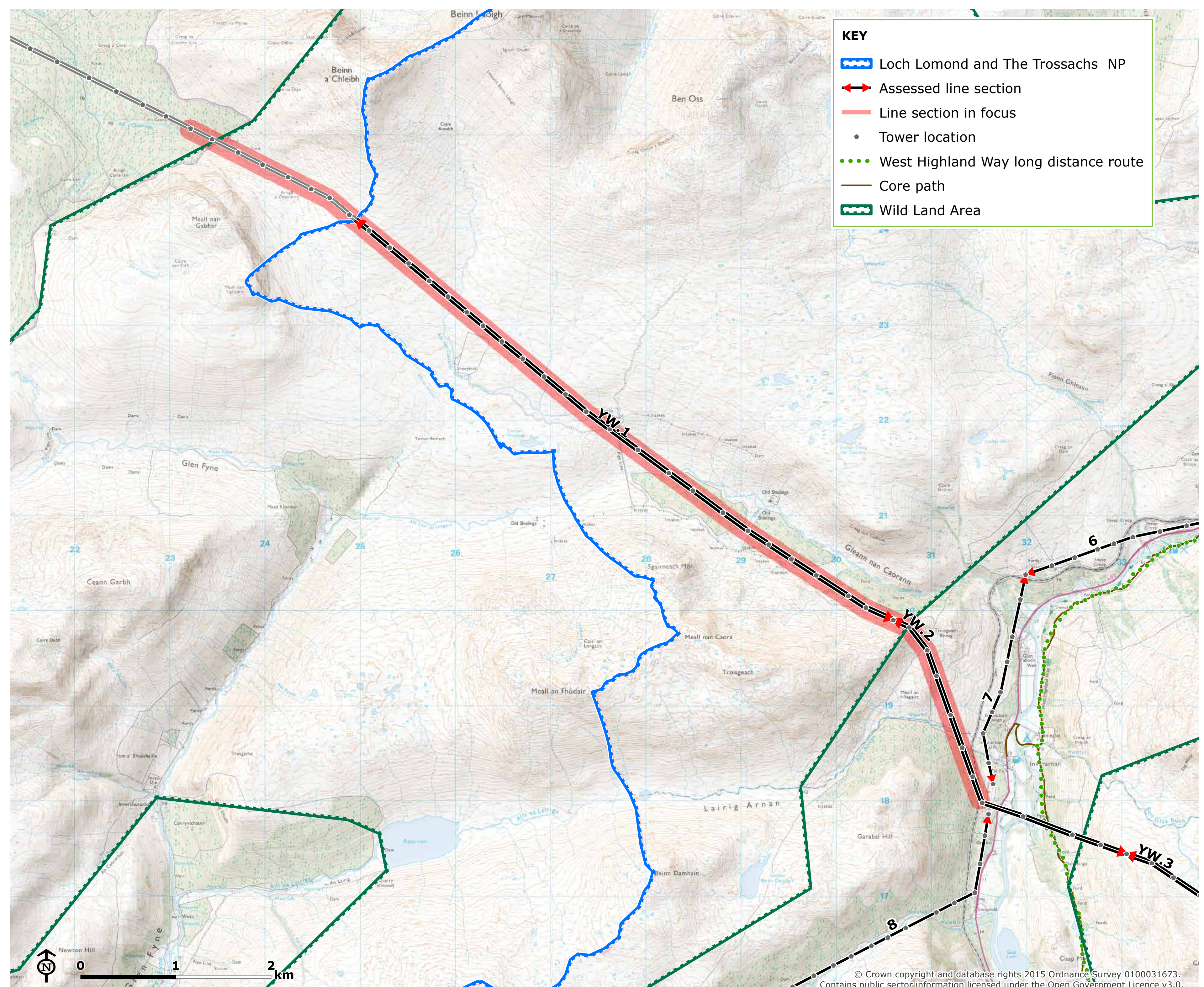
## Landscape and visual context

This section of overhead line runs between Troisgeach Bheag, a rugged summit above Inverarnan (at the northern end of Loch Lomond), north west along the upper sides of Gleann nan Caorann to the edge of the National Park boundary south of the Munro, Ben Lui (1130m AOD). The line passes along the upper sides of the glen in a relatively straight line, crossing heather moorland and semi-natural grassland, and also semi-natural woodland at the south eastern end of the section. The area is remote, and accessible only via farm / transmission access tracks.

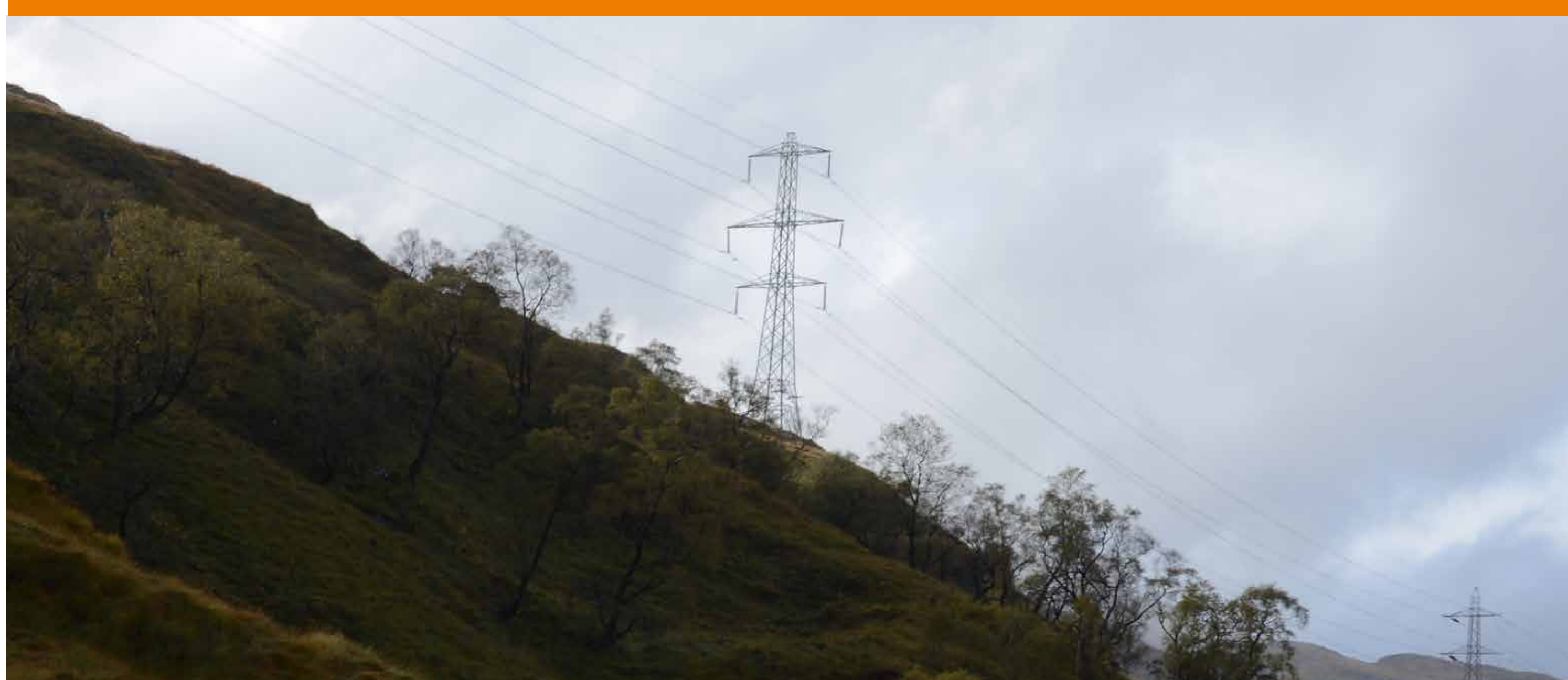
## Landscape and visual impacts

The line is generally well accommodated due to the large scale nature of the landscape and simple land cover of moorland. On more elevated ground the pylons are incongruous with the skyline formed by rocky hill slopes, and detract from the overall sense of wilderness and remoteness, although other man-made elements are present in this glen e.g. tracks, hydro-electric infrastructure, forestry. Overall the landscape impact is **High**.

The line is visible in close proximity views from the track/path which runs in parallel for most of its length, resulting in a high visual impact, however few walkers are anticipated to use this route. There is also visibility from Ben Lui, where the pylons are visible mainly against a moorland backcloth, and at a greater distance. Overall there is a **Medium** visual impact.



## Mitigation proposals



## Undergrounding

A

Undergrounding of 12 km section of overhead line through upper reaches of Gleann nan Caorann south of Ben Lui, from edge of National Park boundary to Inverarnan Substation.

## Landscape enhancement

C

Extension of planting of native trees (i.e. Scots Pine) and regeneration of overgrazed vegetation along the corridor of the overhead line and parallel access track towards the southern footslopes of Ben Lui.