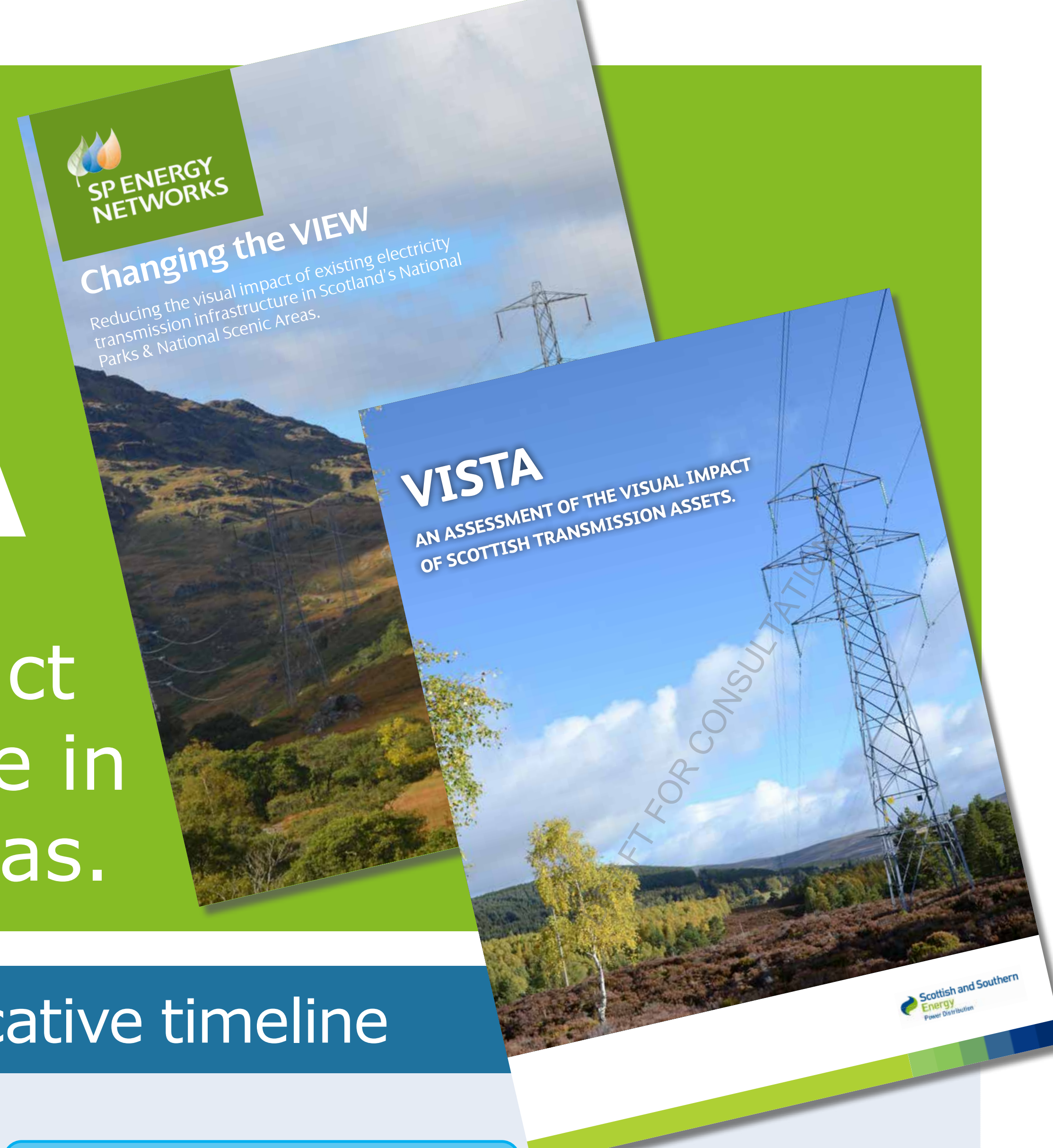


Changing the VIEW & VISTA

Initiatives to assess and reduce the visual impact of existing electricity transmission infrastructure in Scotland's National Parks & National Scenic Areas.



Introduction

The VIEW and VISTA initiatives are seeking to access a share of a £500 million fund available to UK transmission operators, and administered by the electricity industry regulator OFGEM, which is intended to mitigate or positively enhance the visual impact of pre-existing transmission infrastructure within the UK's most protected and highly valued landscapes.

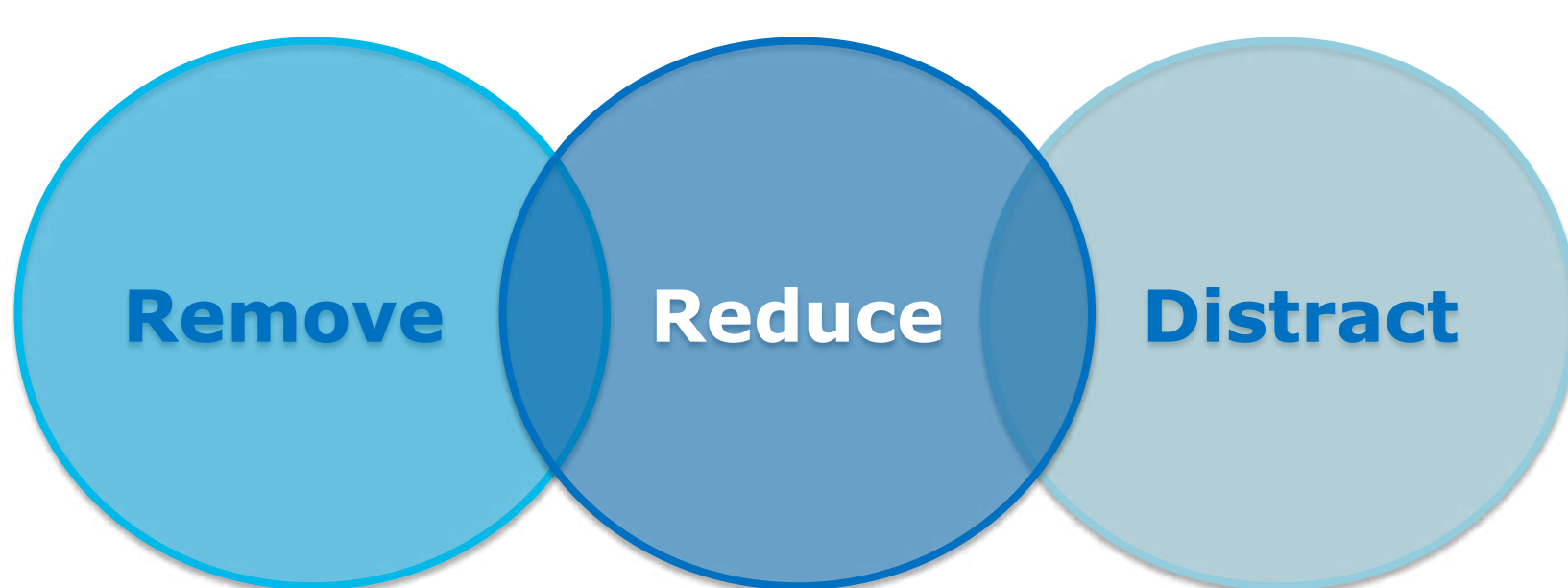


Core aims of VIEW & VISTA

- To identify visual and landscape impacts arising from existing transmission infrastructure in designated areas (National Parks and NSAs).
- Develop projects that achieve the maximum level of visual/landscape enhancement or mitigation of impacts.
- Utilise a partnership approach to develop projects with the greatest benefits.
- Use innovative thinking to deliver projects that have also considered wider benefits (environmental, social, economic) beyond visual impact mitigation.

What will mitigation look like or consist of?

Three key principles of mitigation:



Feasibility of mitigation

- High level internal technical review
- High level indicative costing
- Rating effectiveness of mitigation

Hard engineering options

- Undergrounding of overhead transmission lines.
- Realignment of transmission lines.
- Substitution with different pylon types (e.g. lower height designs).

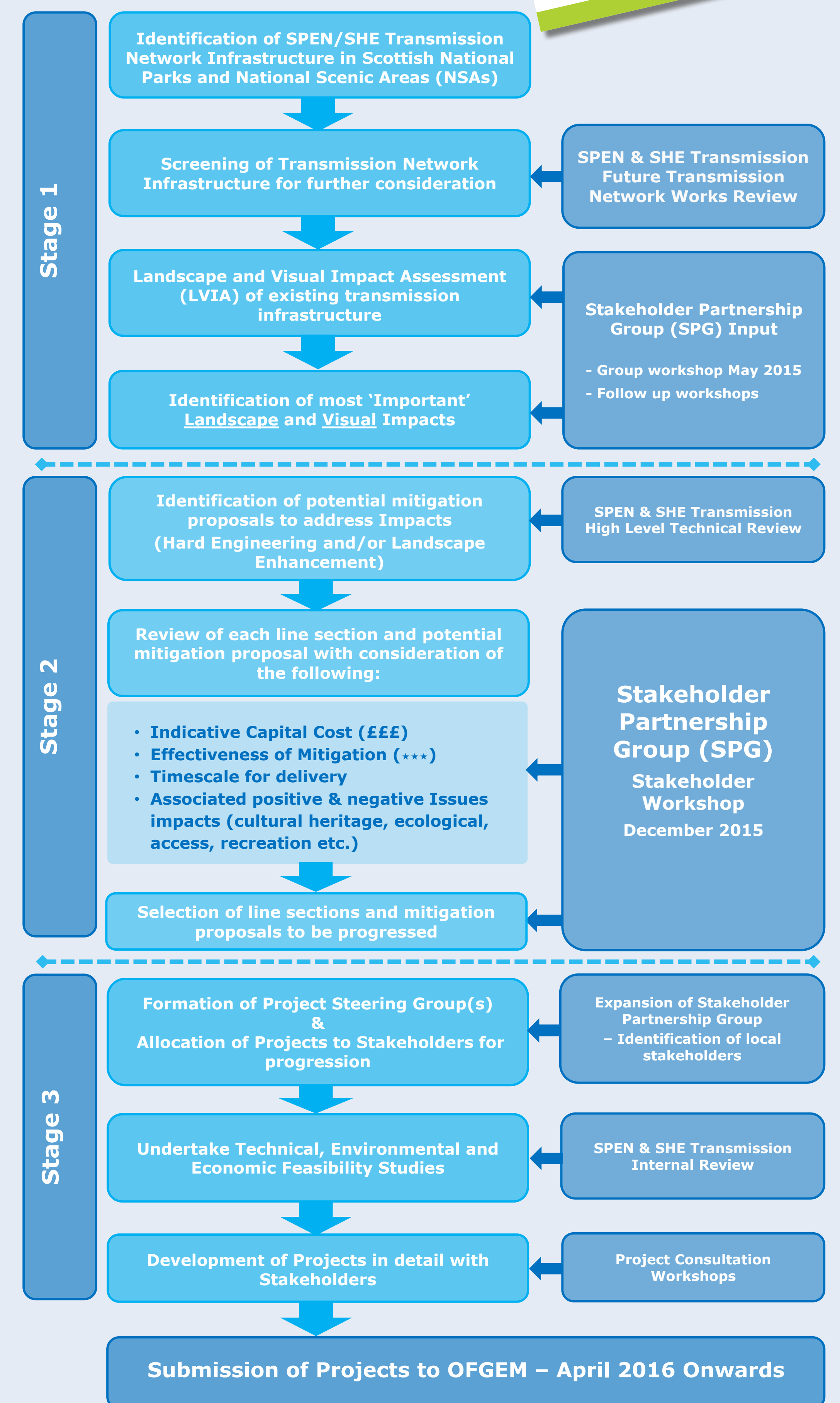
Soft landscape options

- Tree planting or other forms of screening where it might be feasible to mitigate impacts on visual receptors at specific viewpoints/routes.
- Enhancements to the wider landscape that are in line with other objectives and where such measures might feasibly mitigate landscape and visual impacts.

New installation options

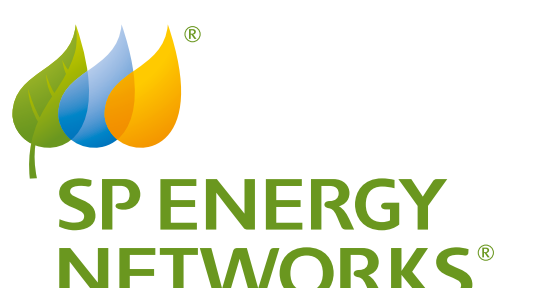
- Introduction of a new installation/intervention to 'focus' or 'distract' from the impacts.

Indicative timeline



How can you get involved?

SP Energy Networks (SPEN) Visual Impact of Existing Wirescape (VIEW) Project



VIEW

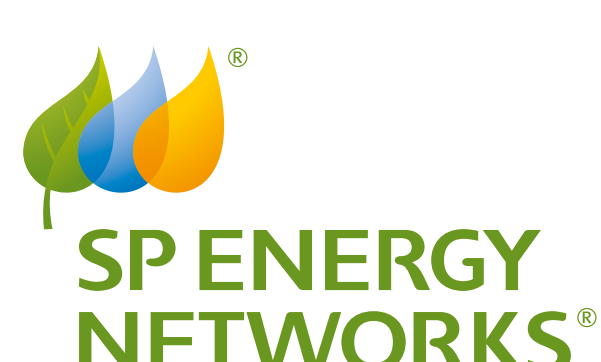
www.spenergynetworks.co.uk/pages/view_project.asp
Email: view@spenergynetworks.co.uk

Scottish Hydro Electric Transmission Visual Impact of Scottish Transmission Assets (VISTA)



VISTA

www.ssepd.co.uk/vistaconsultation/
Email: vista@sse.com



Within the Loch Lomond and The Trossachs National Park Scottish Power Energy Networks (SPEN) and Scottish Hydro Electric Transmission (SHE Transmission) are working collaboratively to ensure their approaches are aligned and complimentary.

