

Blackcraig to Margree

Part C(ii)

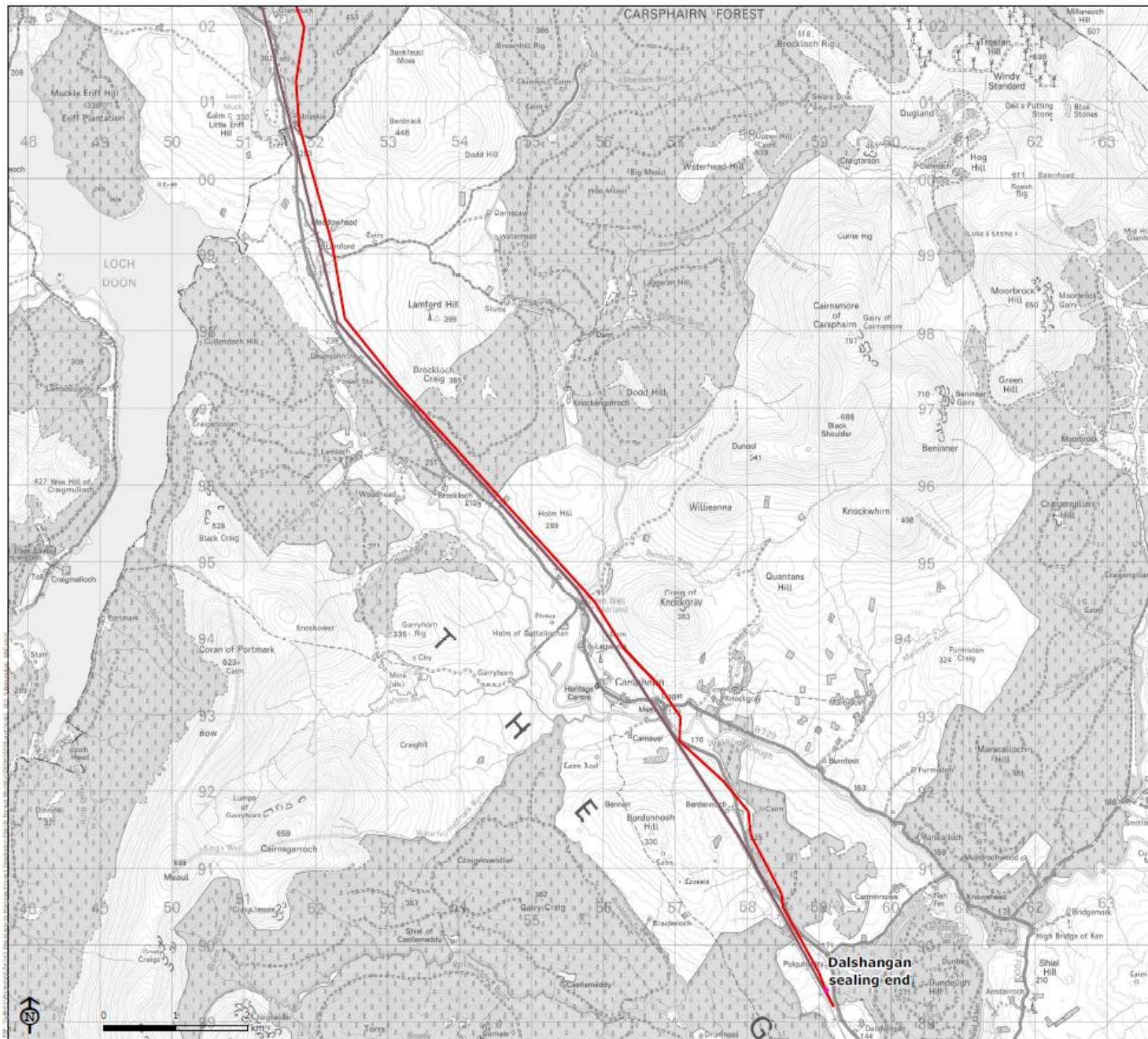
- Existing 132kV tower line - to be removed
- L7 tower route between Dalshangan sealing end and Meiklehill Substation
- Substation

Meiklehill Substation
now known as New
Cumnock Substation



Map Scale @ A3:1:50,000

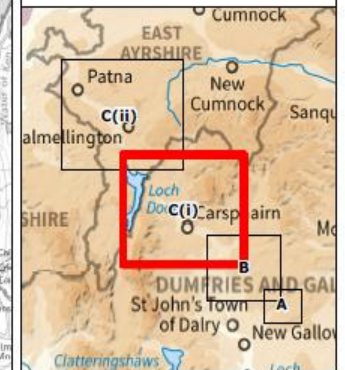




Blackcraig to Margree

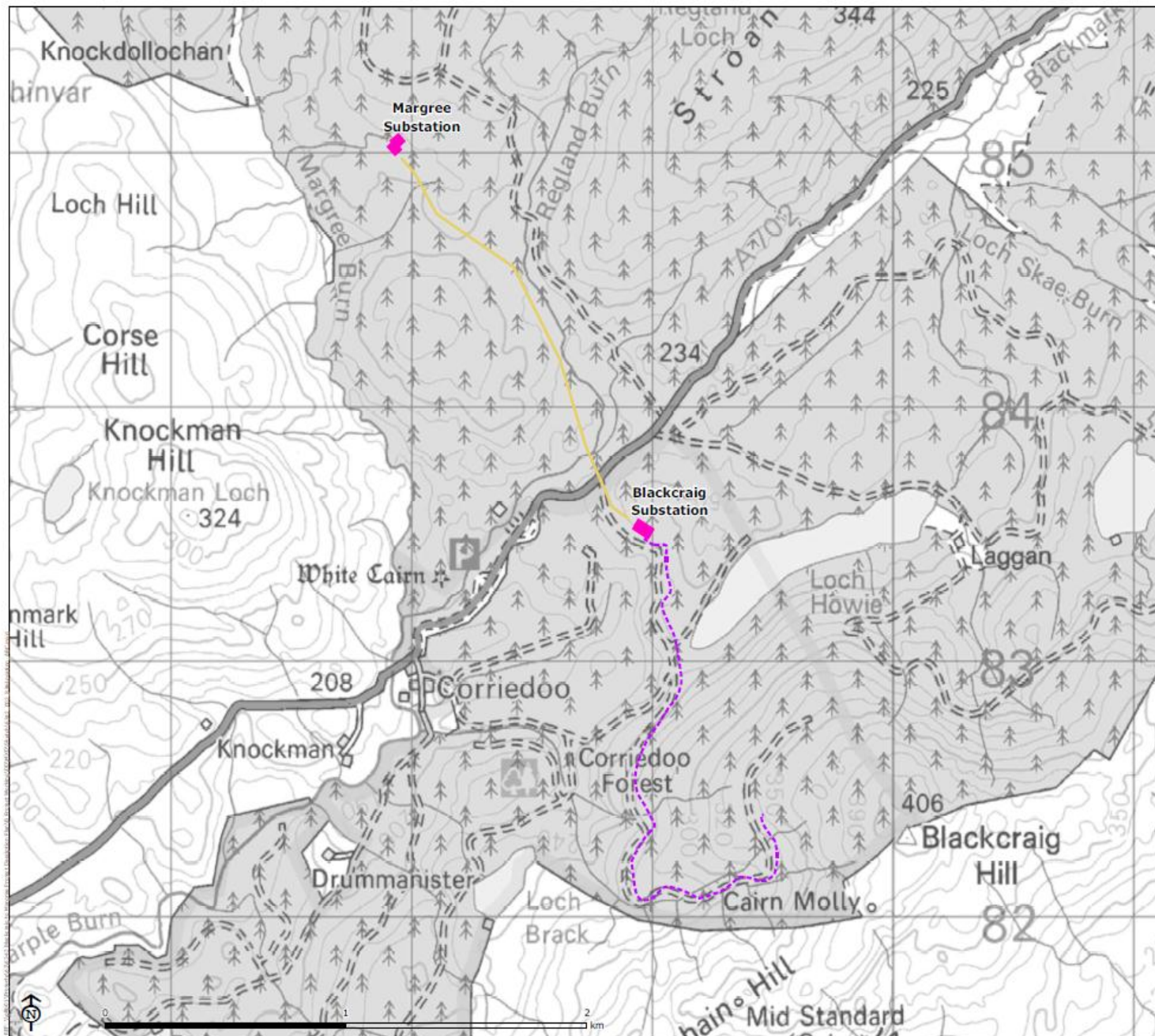
Part C(i)

- Existing 132kV tower line - to be removed
- L7 tower route between Dalshangan sealing end and Meikiehill Substation
- Substation



Map Scale @ A3: 1:50,000

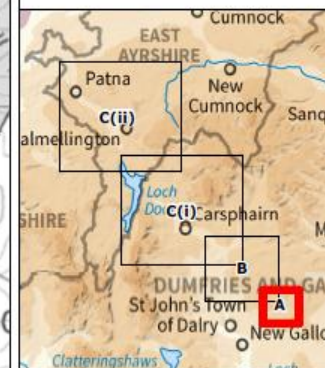




Blackcraig to Margree

Part A

- 33kV cable between Blackcraig windfarm and Blackcraig Substation
- Heavy duty wood pole between Blackcraig and Margree Substations
- Substation



Map Scale @ A3: 1:15,000

