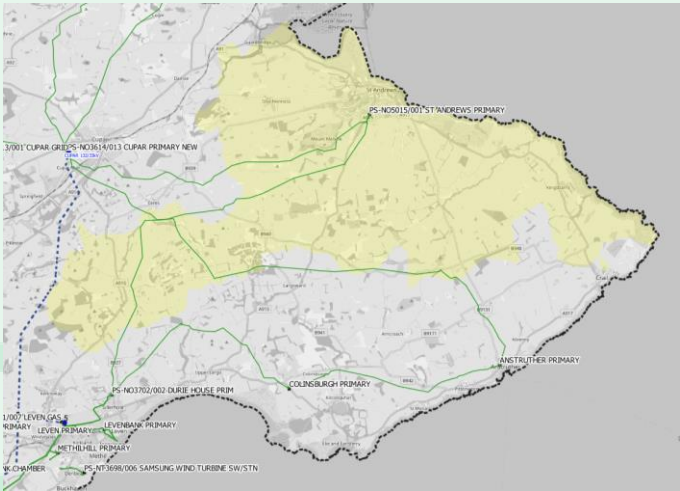


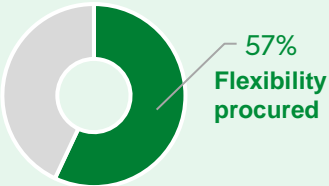
St Andrews primary reinforcement

Reinforce, supported by flexibility



The St Andrews demand group supplies ca. 9,000 customers and is geographically located in the Central and Fife region of SP Distribution (SPD) licence area. It is supplied by Cupar Grid Supply Point (GSP).

Constraint	THERMAL and VOLTAGE Demand is forecast to exceed thermal rating, leading to risk of thermal overloading on 33/11kV transformers and the 33kV circuits supplying each site. Network studies also show that step voltages, beyond EREC P28 compliance, may be observed, for planned or unplanned outages.
Decision	New primary substation Establish a new primary substation in Guardbridge, which lies on the outskirts of St Andrews town.
Justification for decision	Insufficient flexibility to defer reinforcement and remain EREC P2/8 compliant so works are being progressed. Flexibility will support management of the constraint in the interim.
Flexibility product	SUSTAIN/SECURE
Constraint season(s)	Winter
Guide price	Availability fee up to £410/MW/hr Utilisation fee up to £500/MWh
Reinforcement timescale	2027/28



Flexibility position at March 2024	2023/24	2024/25	2025/26	2026/27	2027/28
Risk duration (hrs)	-	0.5	0.5	0.5	6.0
Flexibility required (MW)	-	0.5	1.3	1.6	2.4
Flexibility procured (MW)	0.7	1.2	3.3	3.3	-
Flexible MW capacity met (%)	>100%	>100%	>100%	>100%	0%

Flexibility Tendering

Open

We are tendering for flexibility services at this location.

More information is available on the [PICLO Flex website](#)

Technical Appraisal

More detailed technical information on the nature of the constraint, network impacts, solutions considered and selected intervention are available in this scheme's [Engineering Justification Paper](#)

To ensure that our plans and publications cover the needs of our stakeholders, customers, and the communities we serve, we welcome ongoing feedback.

Feedback can be emailed to: systemdesignteam@spenergynetworks.co.uk