

AECOM

PROJECT
Denny-Wishaw Network Upgrade

CLIENT
SPEN

CONSULTANT
AECOM Limited
1 Tanfield
Inverleith Row, Edinburgh
EH3 5DA
www.aecom.com

- LEGEND**
- Substation
 - Scoping Boundary
 - New-Build Preferred Route Option
 - Access to be surveyed
 - CB Route
 - AA Route
 - ZG Route
 - XR Route
 - XX Route
- BGS 1:625,000 Superficial Geology
- Alluvial Deposits - Clay, Silt And Sand
 - Glacigenic Deposits - Diamicton (Clay, Sand And Gravel)
 - Glaciofluvial Deposits - Sand And Gravel
 - Marine and Coastal-Zone Deposits - Sand And Gravel
 - Organic Deposits - Peat
 - Unknown Deposits

NOTES

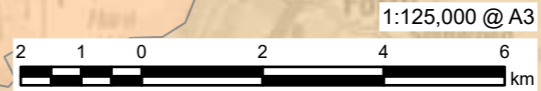
Contains Ordnance Survey Data © Crown Copyright and database right 2025. All rights reserved. Ordnance Survey Licence AC0000808122.
Contains British Geological Survey materials © UKRI 2025.

ISSUE PURPOSE
SCOPING REPORT

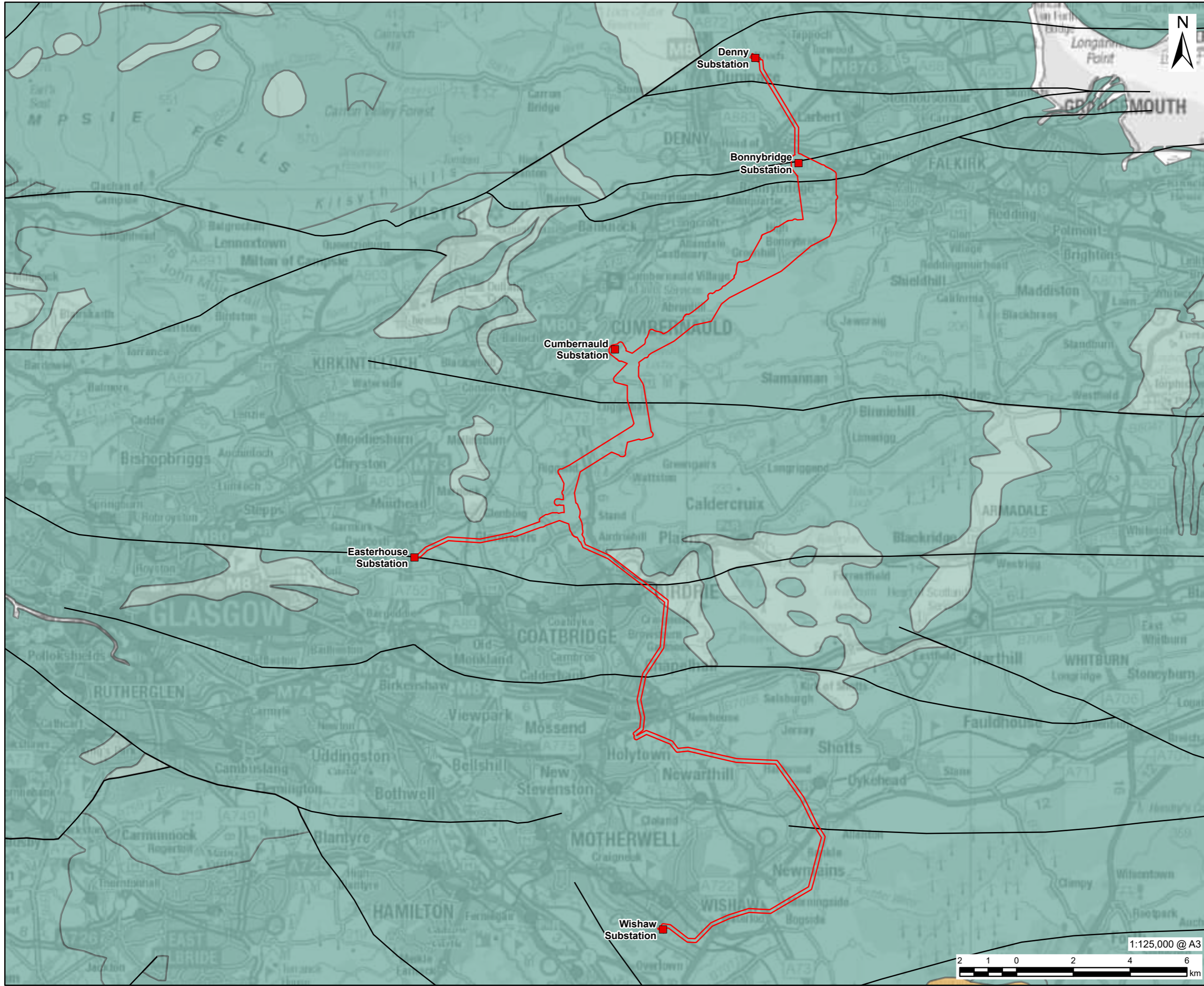
PROJECT NUMBER
60602788

FIGURE TITLE
Superficial Geology

FIGURE NUMBER
Figure 9.1



This drawing has been prepared for the use of AECOM's client. It may not be used, modified, reproduced or relied upon by third parties, except as agreed by AECOM or as required by law. AECOM accepts no responsibility, and denies any liability whatsoever, to any party that uses or relies on this drawing without AECOM's express written consent. Do not scale this document. All measurements must be obtained from the stated dimensions.



AECOM

PROJECT
Denny-Wishaw Network Upgrade

CLIENT
SPEN

CONSULTANT
AECOM Limited
1 Tanfield
Inverleith Row, Edinburgh
EH3 5DA
www.aecom.com

LEGEND

- Substation
- Scoping Boundary
- BGS 1:625,000 Bedrock Geology
 - Carboniferous To Permian
 - Carboniferous
 - Silurian To Devonian
- Thrust Fault
- Fault at rockhead

NOTES

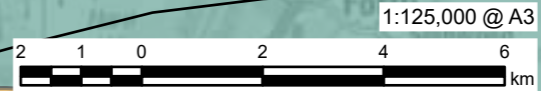
Contains Ordnance Survey Data © Crown Copyright and database right 2025. All rights reserved. Ordnance Survey Licence AC0000808122.
Contains British Geological Survey materials © UKRI 2025.

ISSUE PURPOSE
SCOPING REPORT

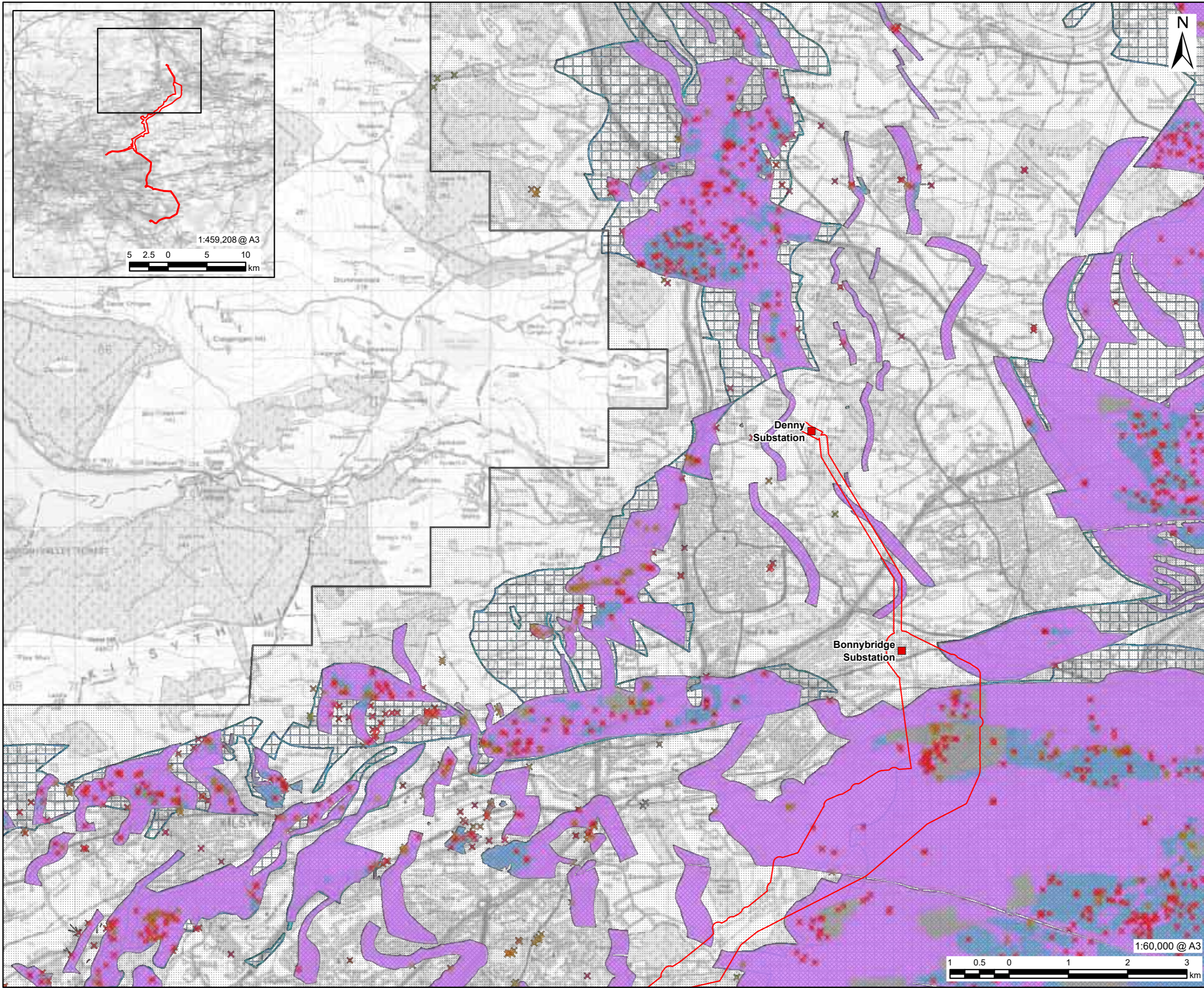
PROJECT NUMBER
60602788

FIGURE TITLE
Bedrock Geology

FIGURE NUMBER
Figure 9.2



This drawing has been prepared for the use of AECOM's client. It may not be used, modified, reproduced or relied upon by third parties, except as agreed by AECOM or as required by law. AECOM accepts no responsibility, and denies any liability whatsoever, to any party that uses or relies on this drawing without AECOM's express written consent. Do not scale this document. All measurements must be obtained from the stated dimensions.



- LEGEND**
- Scoping Boundary
 - Substation
 - Mine Entry Potential Zone of Influence
 - Development High Risk Area
 - Surface Coal Resource Areas
 - Surface Mining (Past and Current)
 - Past Shallow Coal Mine Workings
 - Probable Shallow Coal Mine Workings
 - Coal Outcrops
 - Coal Mining Reporting Area
- Mine Entry**
- X Adit
 - X Gutter Pit
 - X Shaft

NOTES

Contains Ordnance Survey Data © Crown Copyright and database right 2025. All rights reserved. Ordnance Survey Licence AC0000808122.

The Mining Remediation Authority has made data sets available for use by third parties under the Open Government Licence v3 Contains OS data © Crown Copyright and database right 2023 OS AC0000820577

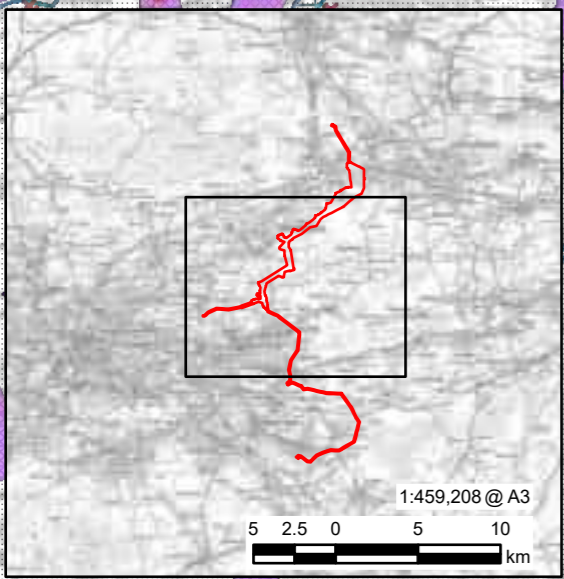
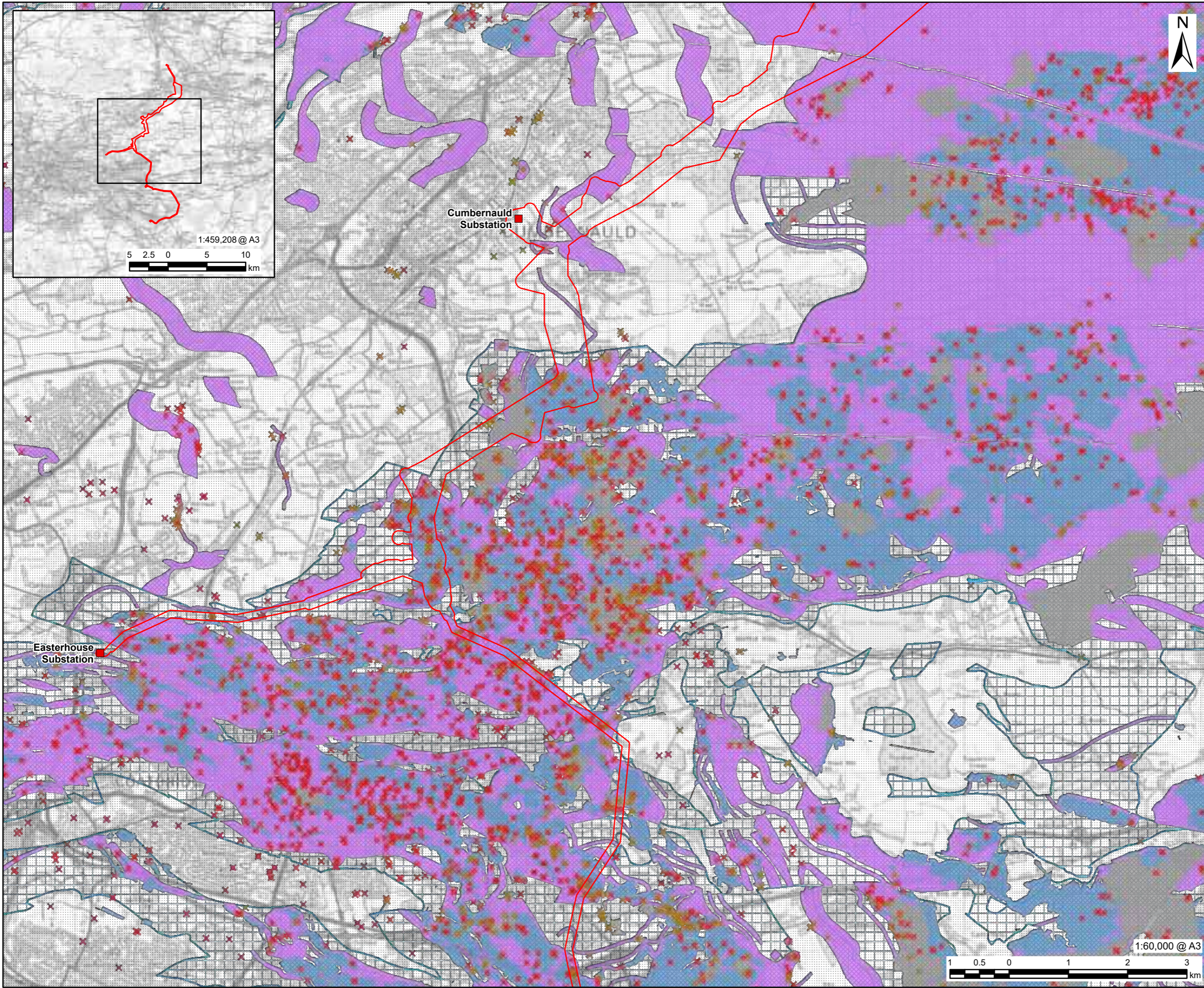
ISSUE PURPOSE
SCOPING REPORT

PROJECT NUMBER
60602788

FIGURE TITLE
Mining
Page 1 of 3

FIGURE NUMBER
Figure 9.3

This drawing has been prepared for the use of AECOM's client. It may not be used, modified, reproduced or relied upon by third parties, except as agreed by AECOM or as required by law. AECOM accepts no responsibility, and denies any liability whatsoever, to any party that uses or relies on this drawing without AECOM's express written consent. Do not scale this document. All measurements must be obtained from the stated dimensions.



LEGEND

- Scoping Boundary
 - Substation
 - Mine Entry Potential Zone of Influence
 - Development High Risk Area
 - Surface Coal Resource Areas
 - Surface Mining (Past and Current)
 - Past Shallow Coal Mine Workings
 - Probable Shallow Coal Mine Workings
 - Coal Outcrops
 - Coal Mining Reporting Area
- Mine Entry**
- ✕ Adit
 - ✕ Gutter Pit
 - ✕ Shaft

NOTES

Contains Ordnance Survey Data © Crown Copyright and database right 2025. All rights reserved. Ordnance Survey Licence AC0000808122.
The Mining Remediation Authority has made data sets available for use by third parties under the Open Government Licence v3
Contains OS data © Crown Copyright and database right 2023 OS AC0000820577

ISSUE PURPOSE

SCOPING REPORT

PROJECT NUMBER

60602788

FIGURE TITLE

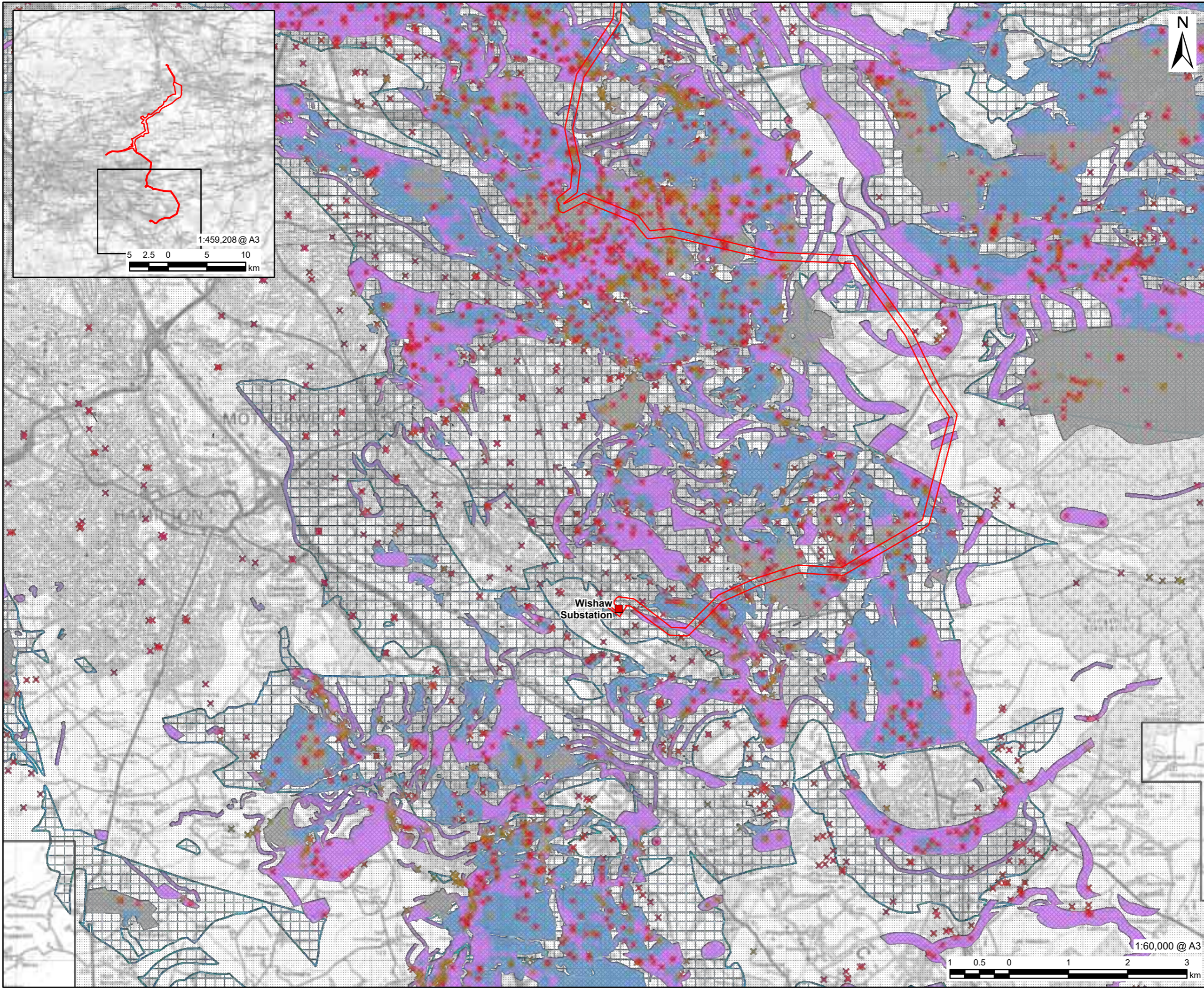
Mining
Page 2 of 3

FIGURE NUMBER

Figure 9.3



This drawing has been prepared for the use of AECOM's client. It may not be used, modified, reproduced or relied upon by third parties, except as agreed by AECOM or as required by law. AECOM accepts no responsibility, and denies any liability whatsoever, to any party that uses or relies on this drawing without AECOM's express written consent. Do not scale this document. All measurements must be obtained from the stated dimensions.

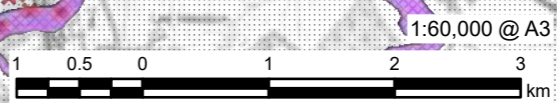
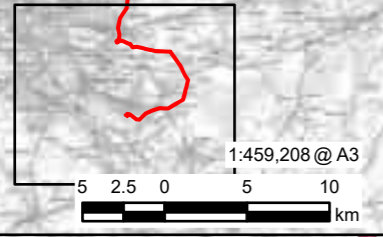


- LEGEND**
- Scoping Boundary
 - Substation
 - Mine Entry Potential Zone of Influence
 - Development High Risk Area
 - Surface Coal Resource Areas
 - Surface Mining (Past and Current)
 - Past Shallow Coal Mine Workings
 - Probable Shallow Coal Mine Workings
 - Coal Outcrops
 - Coal Mining Reporting Area
- Mine Entry**
- X Adit
 - X Gutter Pit
 - X Shaft

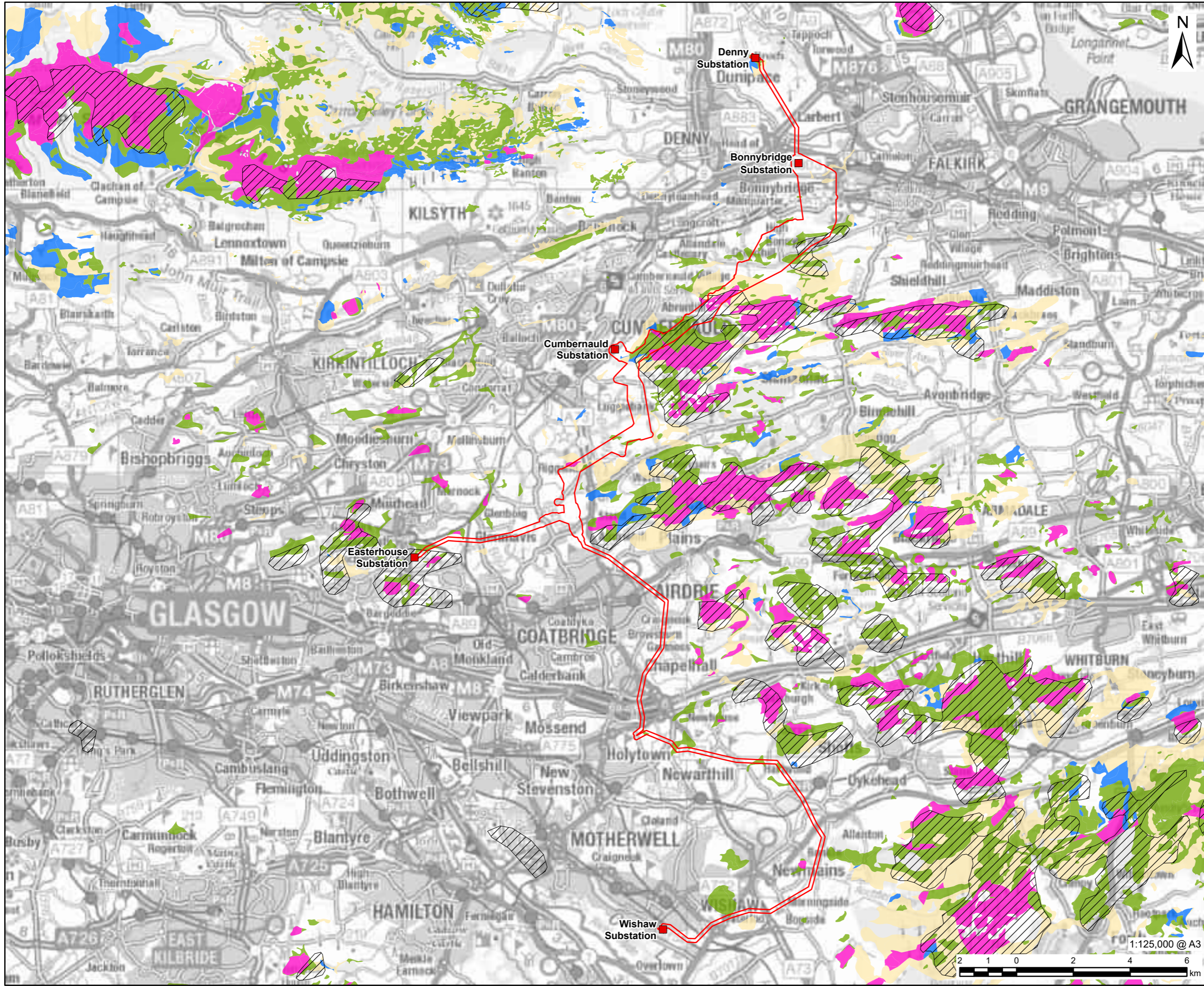
NOTES

Contains Ordnance Survey Data © Crown Copyright and database right 2025. All rights reserved. Ordnance Survey Licence AC0000808122.

The Mining Remediation Authority has made data sets available for use by third parties under the Open Government Licence v3 Contains OS data © Crown Copyright and database right 2023 OS AC0000820577



This drawing has been prepared for the use of AECOM's client. It may not be used, modified, reproduced or relied upon by third parties, except as agreed by AECOM or as required by law. AECOM accepts no responsibility, and denies any liability whatsoever, to any party that uses or relies on this drawing without AECOM's express written consent. Do not scale this document. All measurements must be obtained from the stated dimensions.



PROJECT
Denny-Wishaw Network Upgrade

CLIENT
SPEN

CONSULTANT
AECOM Limited
1 Tanfield
Inverleith Row, Edinburgh
EH3 5DA
www.aecom.com

- LEGEND**
- Scoping Boundary
 - Substation
 - Organic Deposits - Peat
 - Class 1
 - Class 2
 - Class 3
 - Class 4
 - Class 5

NOTES

Contains Ordnance Survey Data © Crown Copyright and database right 2025. All rights reserved. Ordnance Survey Licence AC0000808122.
Contains British Geological Survey materials © UKRI 2025.
Contains SNH information licensed under the Open Government Licence v3.0.

ISSUE PURPOSE
SCOPING REPORT

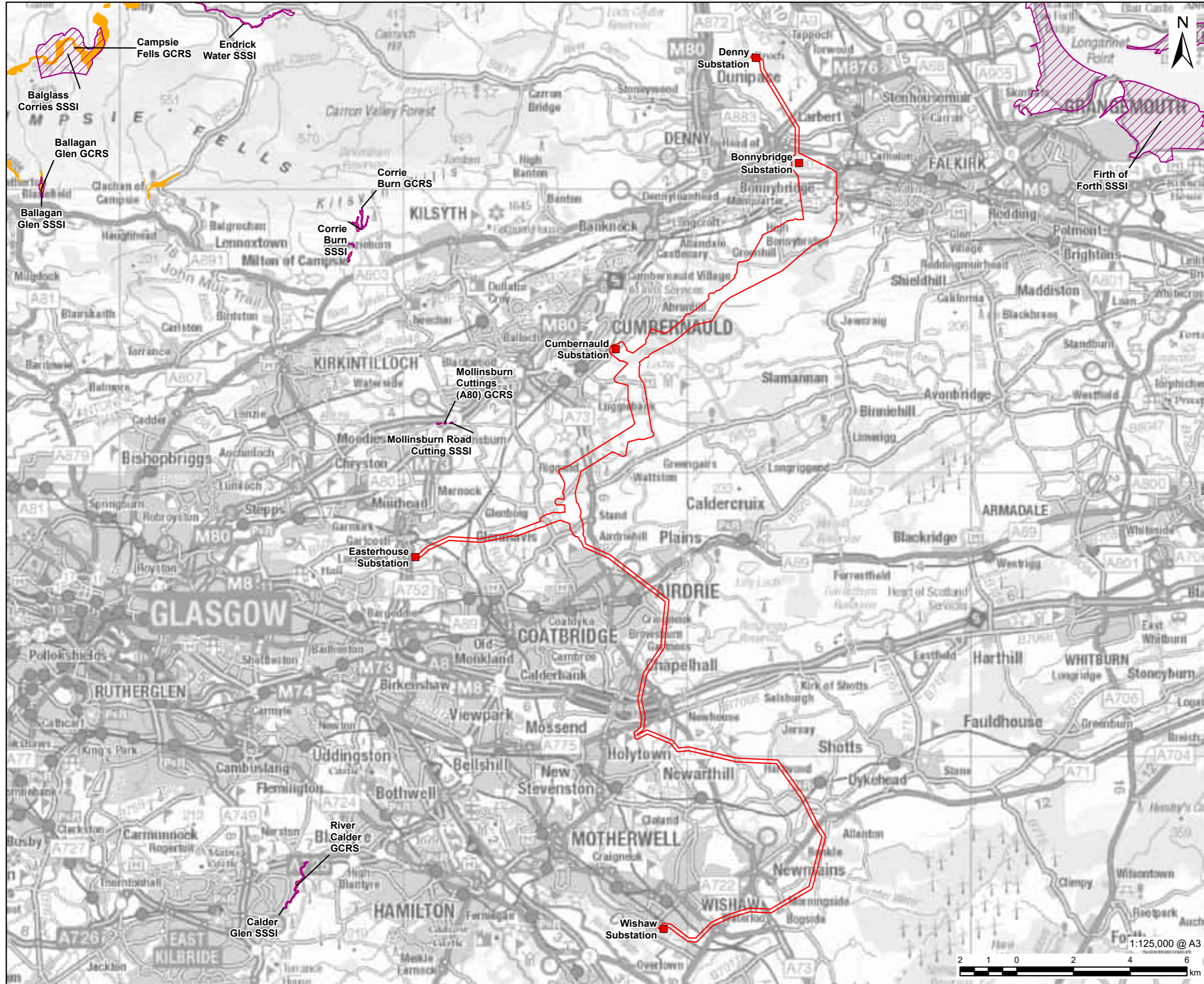
PROJECT NUMBER
60602788

FIGURE TITLE
Carbon and Peatland

FIGURE NUMBER
Figure 9.4

This drawing has been prepared for the use of AECOM's client. It may not be used, modified, reproduced or relied upon by third parties, except as agreed by AECOM or as required by law. AECOM accepts no responsibility, and denies any liability whatsoever, to any party that uses or relies on this drawing without AECOM's express written consent. Do not scale this document. All measurements must be obtained from the stated dimensions.





PROJECT
Denny-Wishaw Network Upgrade

CLIENT
SPEN

CONSULTANT
AECOM Limited
1 Tanfield
Inverleith Row, Edinburgh
EH3 5DA
www.aecom.com

- LEGEND**
- Scoping Boundary
 - Substation
 - Site of Special Scientific Interest (SSSI)
 - Geological Conservation Review Site (GCRS)

NOTES

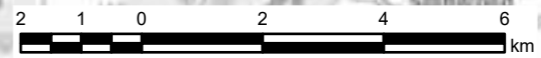
Contains Ordnance Survey Data © Crown Copyright and database right 2025. All rights reserved. Ordnance Survey Licence AC0000808122.
Contains SNH information licensed under the Open Government Licence v3.0

ISSUE PURPOSE
SCOPING REPORT

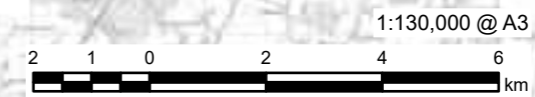
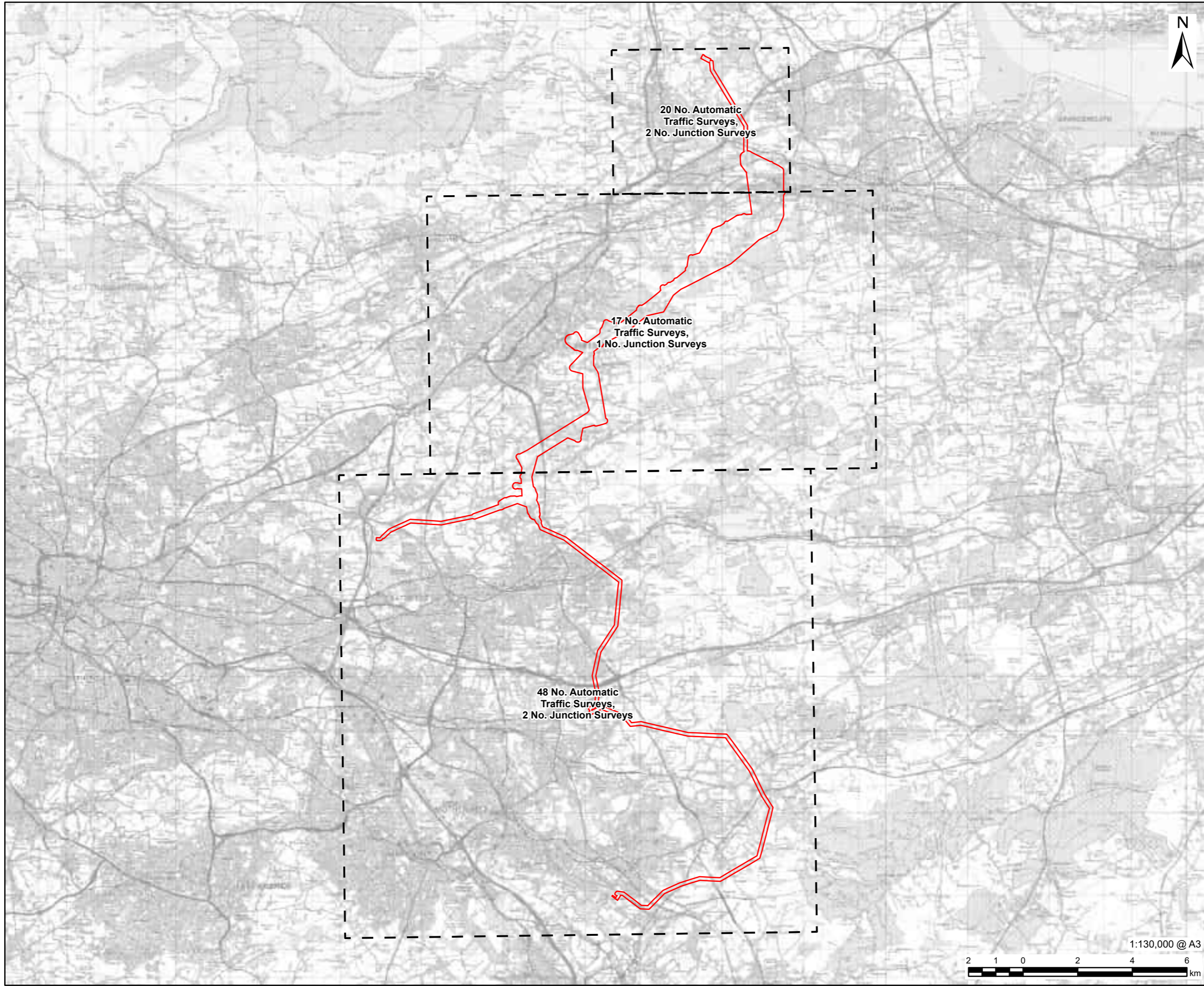
PROJECT NUMBER
60602788

FIGURE TITLE
Geological Designated Sites

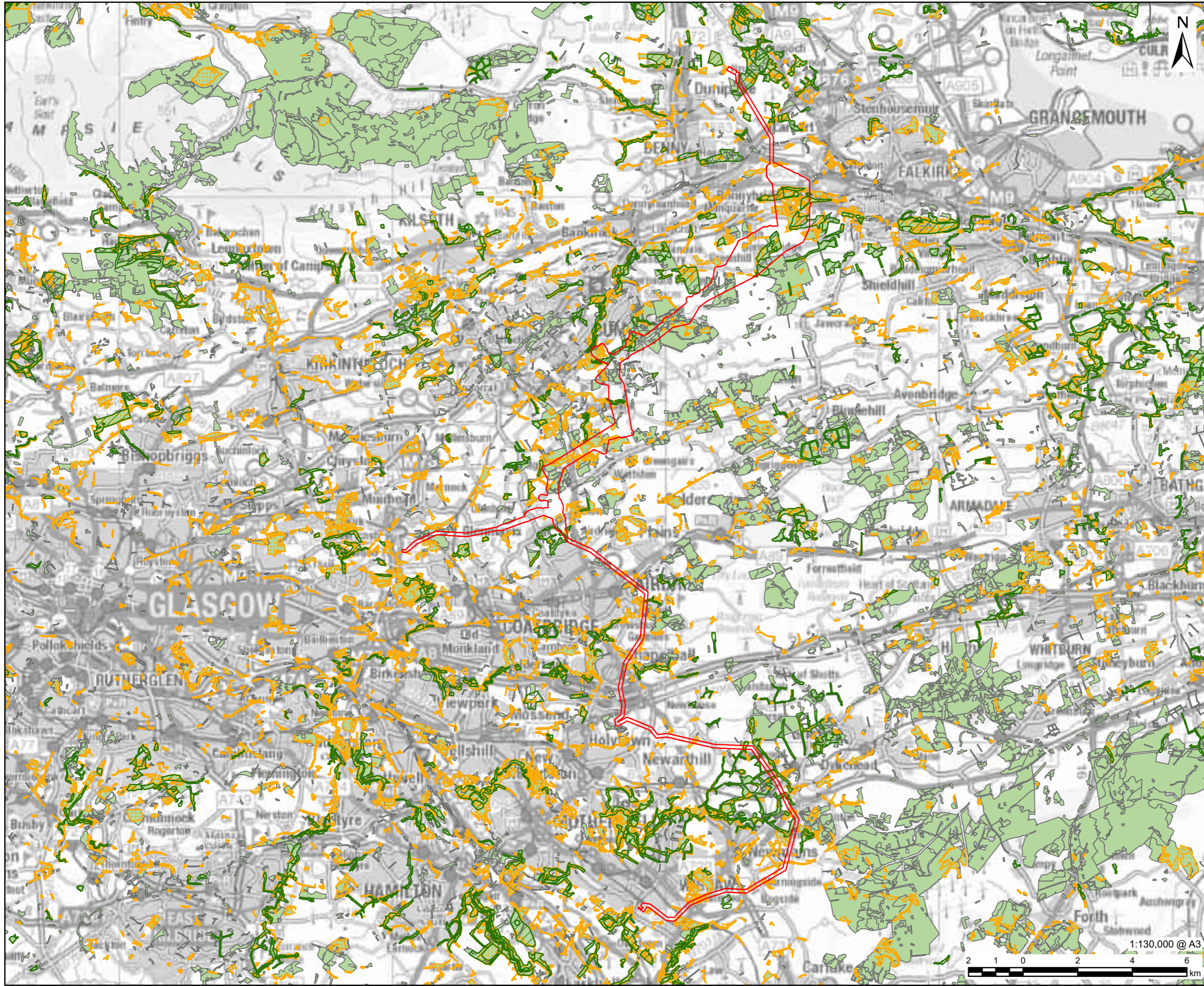
FIGURE NUMBER
Figure 9.5



This drawing has been prepared for the use of AECOM's client. It may not be used, modified, reproduced or relied upon by third parties, except as agreed by AECOM or as required by law. AECOM accepts no responsibility, and denies any liability whatsoever, to any party that uses or relies on this drawing without AECOM's express written consent. Do not scale this document. All measurements must be obtained from the stated dimensions.



This drawing has been prepared for the use of AECOM's client. It may not be used, modified, reproduced or relied upon by third parties, except as agreed by AECOM or as required by law. AECOM accepts no responsibility, and denies any liability whatsoever, to any party that uses or relies on this drawing without AECOM's express written consent. Do not scale this document. All measurements must be obtained from the stated dimensions.



This drawing has been prepared for the use of AECOM's client. It may not be used, modified, reproduced or relied upon by third parties, except as agreed by AECOM or as required by law. AECOM accepts no responsibility, and denies any liability whatsoever, to any party that uses or relies on this drawing without AECOM's express written consent. Do not scale this document. All measurements must be obtained from the stated dimensions.

AECOM

PROJECT
Denny-Wishaw Network Upgrade

CLIENT
SPEN

CONSULTANT
AECOM Limited
1 Tanfield
Inverleith Row, Edinburgh
EH3 5DA
www.aecom.com

- LEGEND**
- Scoping Boundary
 - Long Established Woodland of Plantation Origin
 - Native Woodland Survey
 - National Forest Inventory Scotland

NOTES

Contains Ordnance Survey Data © Crown Copyright and database right 2025. All rights reserved. Ordnance Survey Licence AC0000808122.
 Contains Nature Scot information licensed under the Open Government Licence v3.0
 Contains Scottish Forestry information licensed under the Open Government Licence v3.0

ISSUE PURPOSE
SCOPING REPORT

PROJECT NUMBER
60602788

FIGURE TITLE
Forestry

FIGURE NUMBER
Figure 13.1

