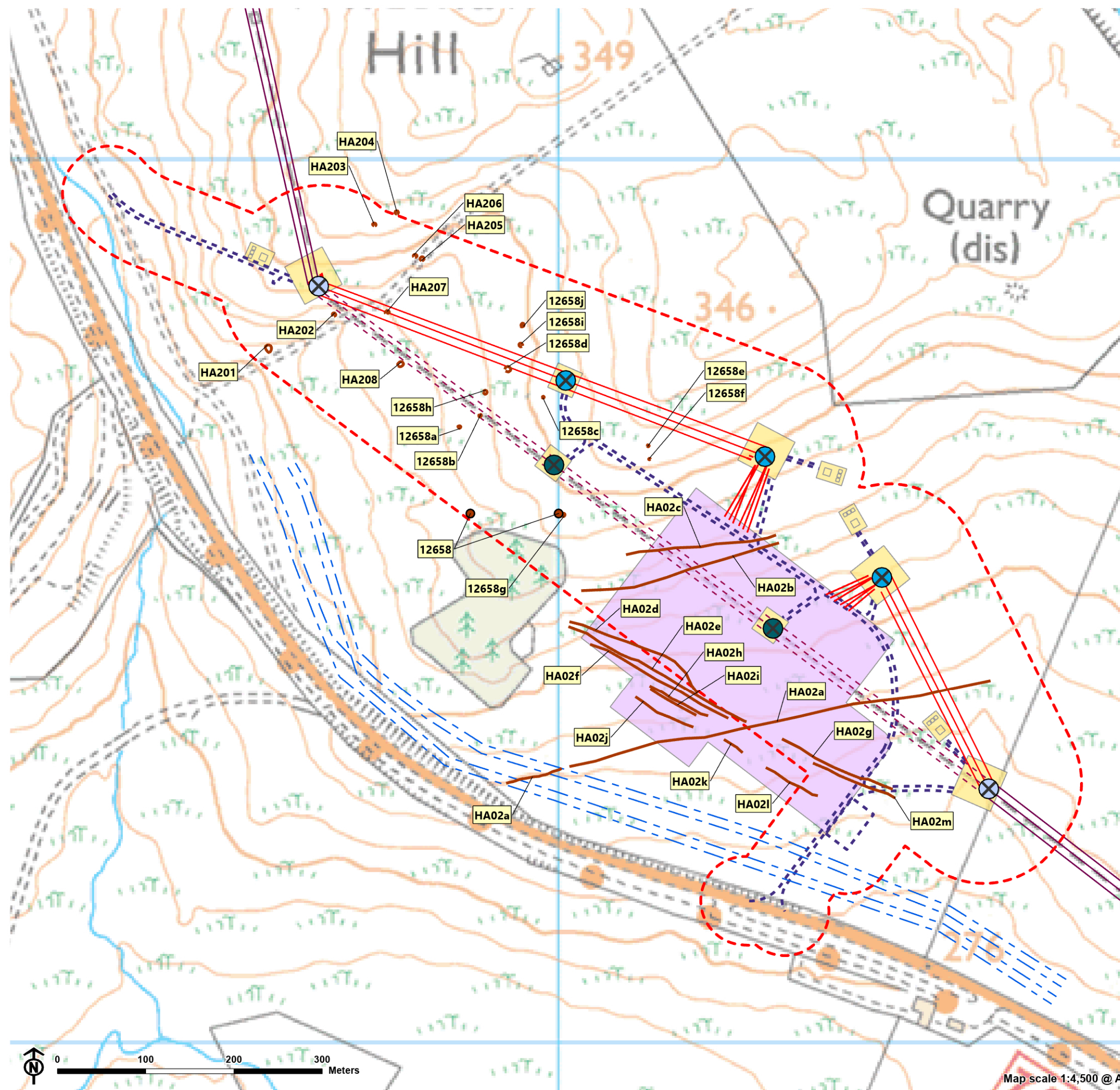


Figure 7.1: Cultural Heritage: Inner Study Area



- Proposed Tower
- Existing Tower
- Existing Tower to be removed
- Proposed 400 kV Overhead Line (OHL) ZV Diversion
- Existing 400kV Overhead Line (OHL)
- Existing 400 kV OHL to be removed
- Inner Study Area
- CH Asset (point)
- CH Asset (linear)
- Temporary Working Area
- Proposed Redshaw Substation
- Access Tracks
- Pipeline