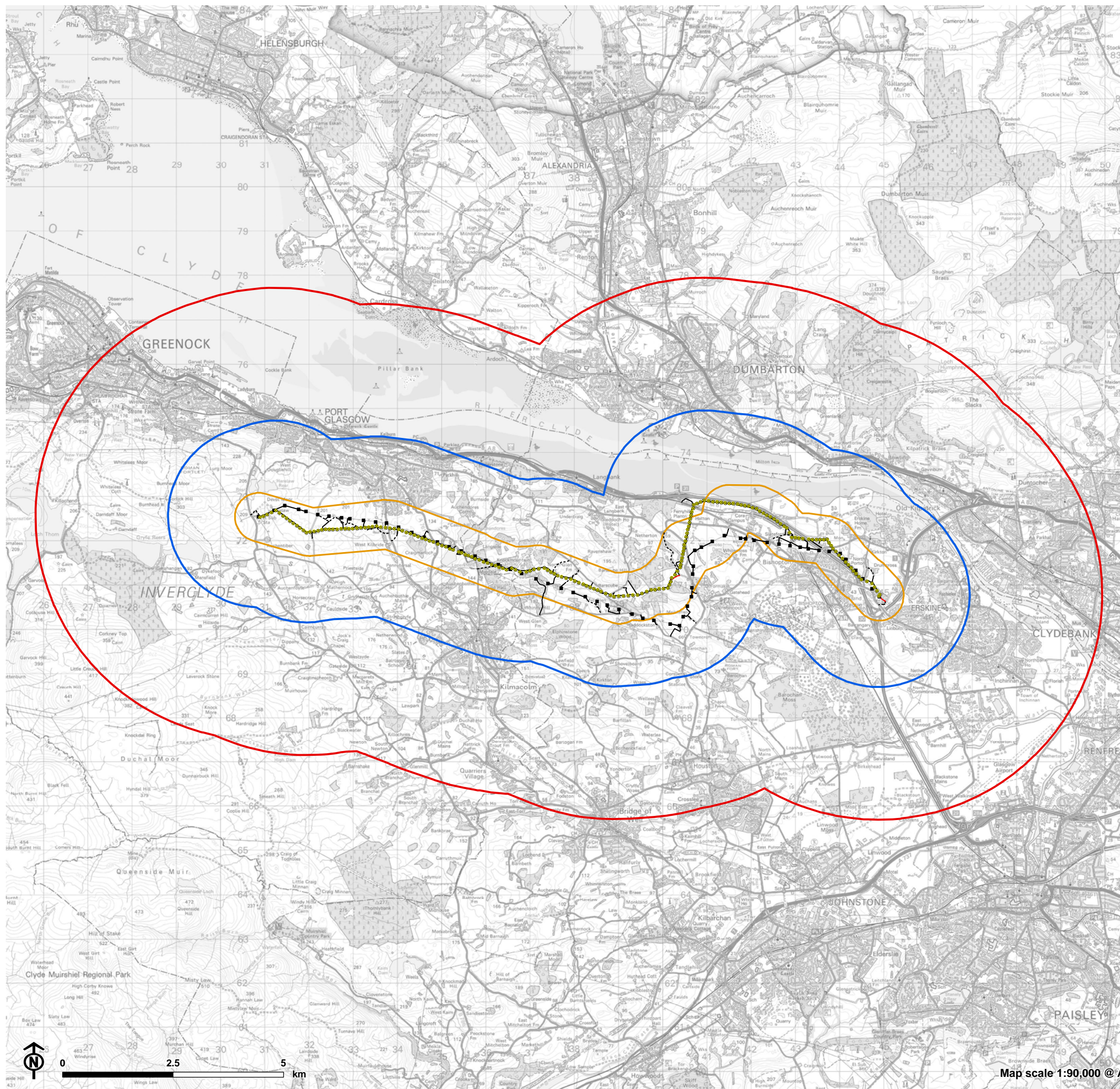


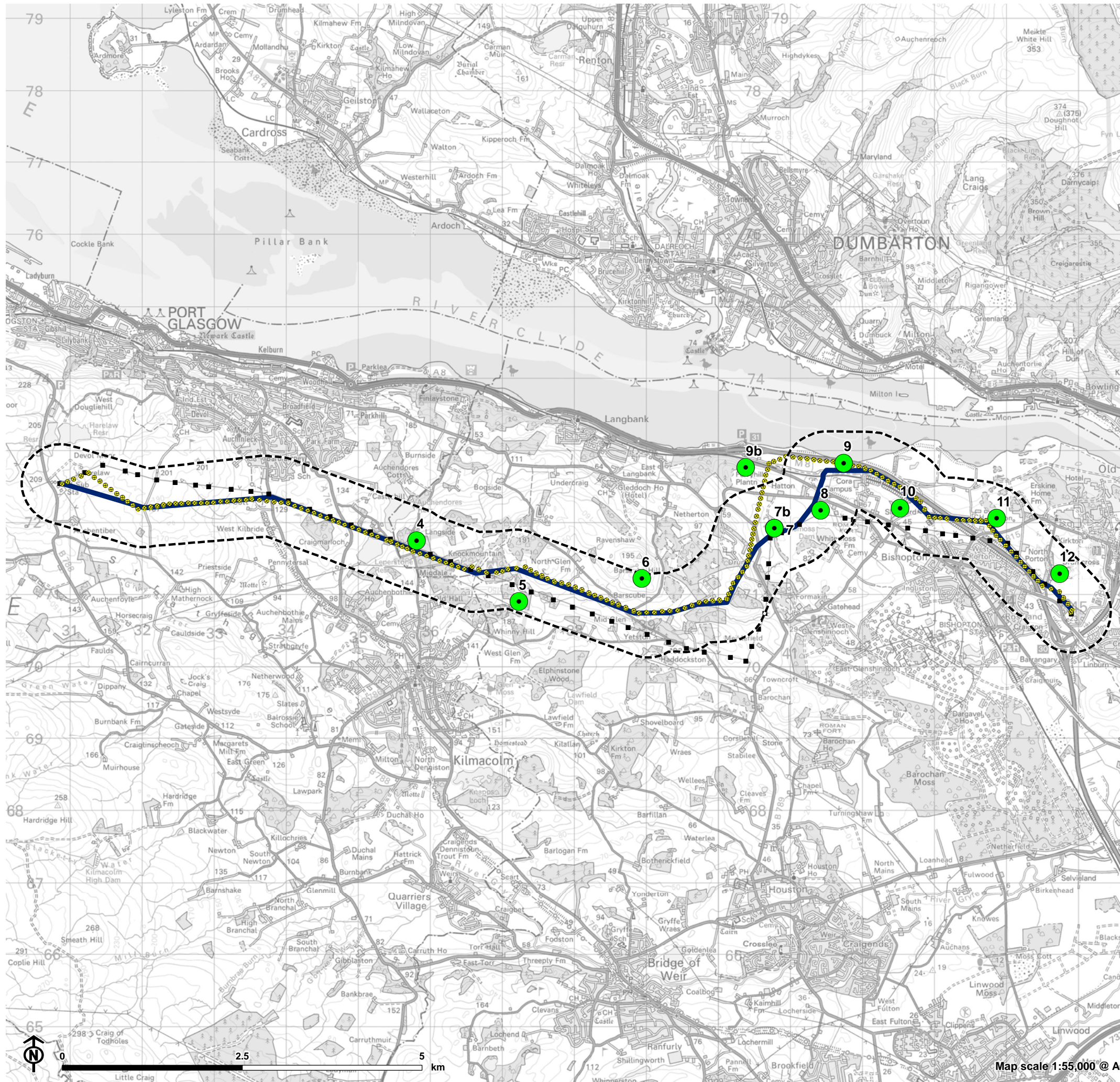
**Appendix A**  
**Figures**

Figure 8.3.1: Study Area



- New 132kV OHL (wood pole)
- Existing 132kV OHL (towers to be removed)
- New Access
- New Access (Stone)
- Existing Access
- 5km – statutory designated sites
- 2km – non-statutory designated sites
- Study area for ornithology

**Note:** Observation Points 1-3 were removed from flight activity surveys following consultation with SNH. Refer to Technical Appendix 8.3 for further information



Erskine to Devol Moor  
for SPEN

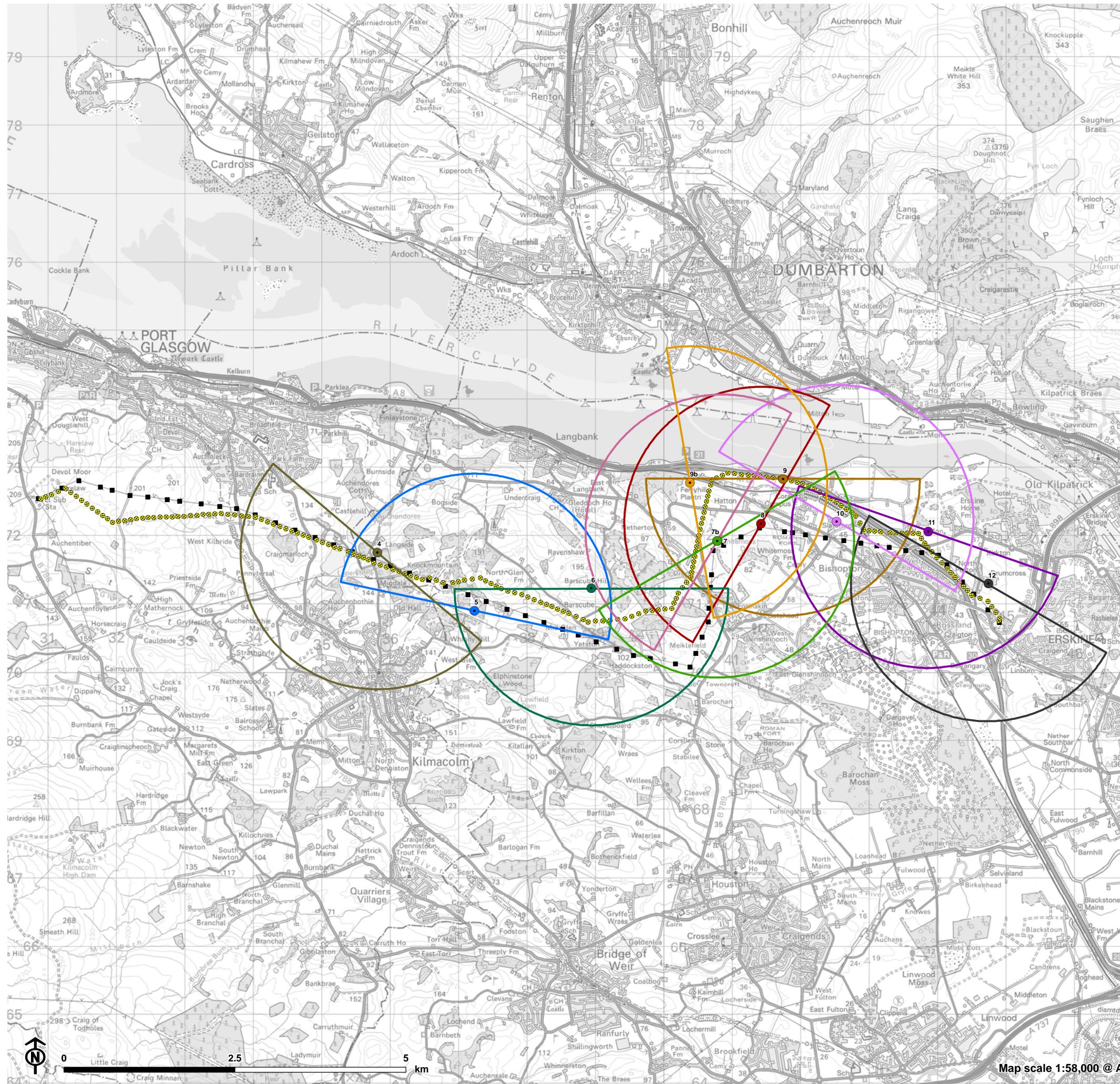


Figure 8.3.2: Ornithology Observation Points

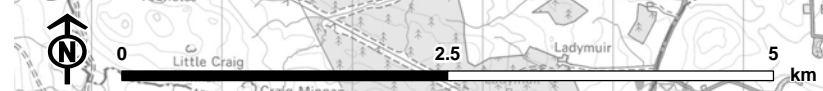
- New 132kV OHL (wood pole)
- Existing 132kV OHL (towers to be removed)
- Erskine to Devol Route (April 2018)
- Ornithology observation point
- ⋯ Breeding Bird Study Area

**Note:** Observation Points 1-3 were removed from flight activity surveys following consultation with SNH. Refer to Technical Appendix 8.3 for further information

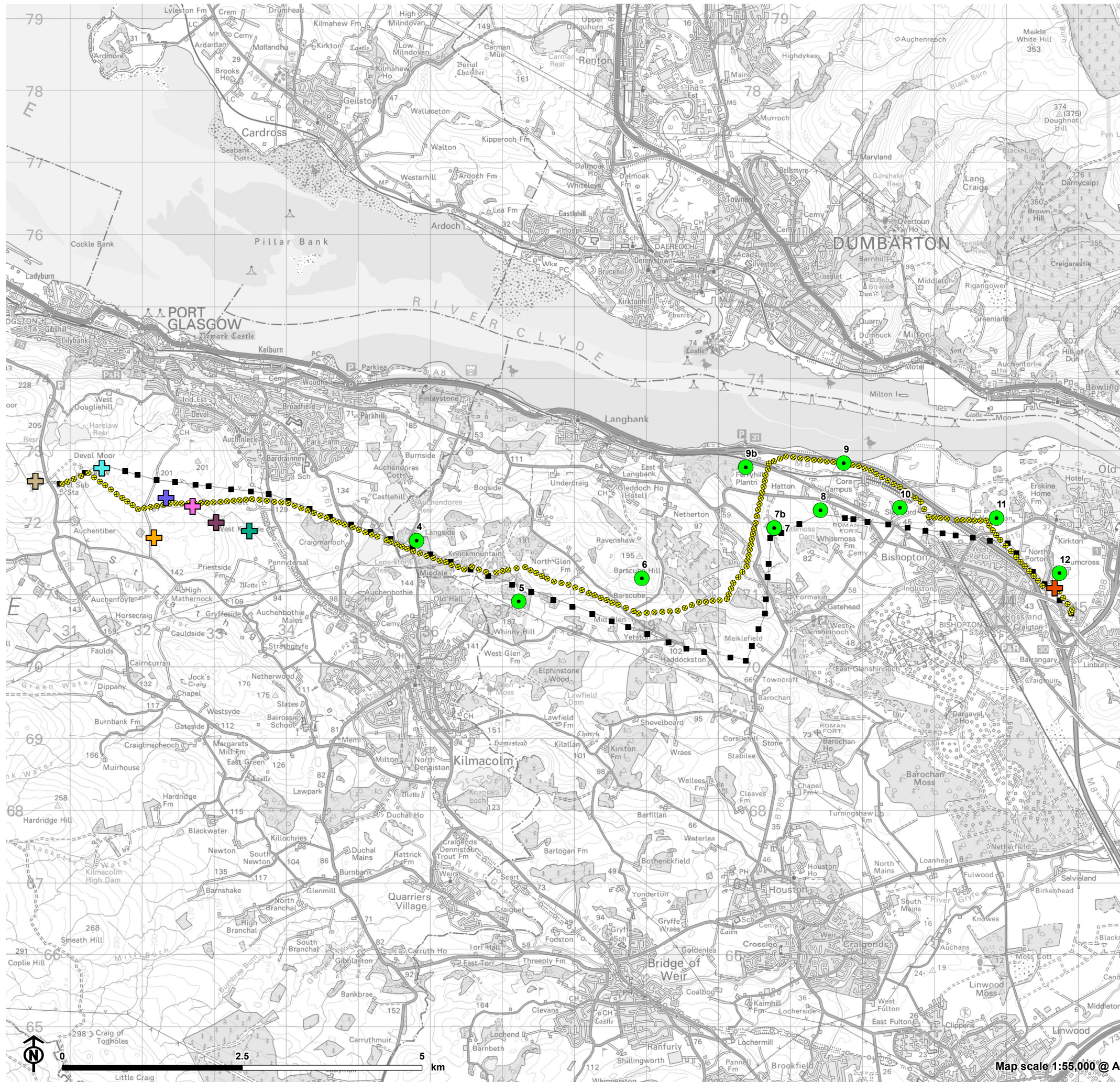
Figure 8.3.3: Viewshed Coverage



- ⊗ New 132kV OHL (wood pole)
  - Existing 132kV OHL (towers to be removed)
- Ornithology observation point**
- 4
  - 5
  - 6
  - 7
  - 7b
  - 8
  - 9
  - 9b
  - 10
  - 11
  - 12
- ▭ VP4 180 degree 2km radius
  - ▭ VP5 180 degree 2km radius
  - ▭ VP6 180 degree 2km radius
  - ▭ VP7 180 degree 2km radius
  - ▭ VP7b 180 degree 2km radius
  - ▭ VP8 180 degree 2km radius
  - ▭ VP9 180 degree 2km radius
  - ▭ VP9b 180 degree 2km radius
  - ▭ VP10 180 degree 2km radius
  - ▭ VP11 180 degree 2km radius
  - ▭ VP12 180 degree 2km radius



Map scale 1:58,000 @ A3



Erskine to Devol Moor  
for SPEN



Figure 8.3.4: Breeding Bird Territories

- New 132kV OHL (wood pole)
- Existing 132kV OHL (towers to be removed)
- Ornithology observation point

**BBS Species Territories**

- Snipe 1
- Snipe 2
- Snipe 3
- Snipe 4
- Curlew 1
- Curlew 2
- Lapwing
- Tree sparrow

