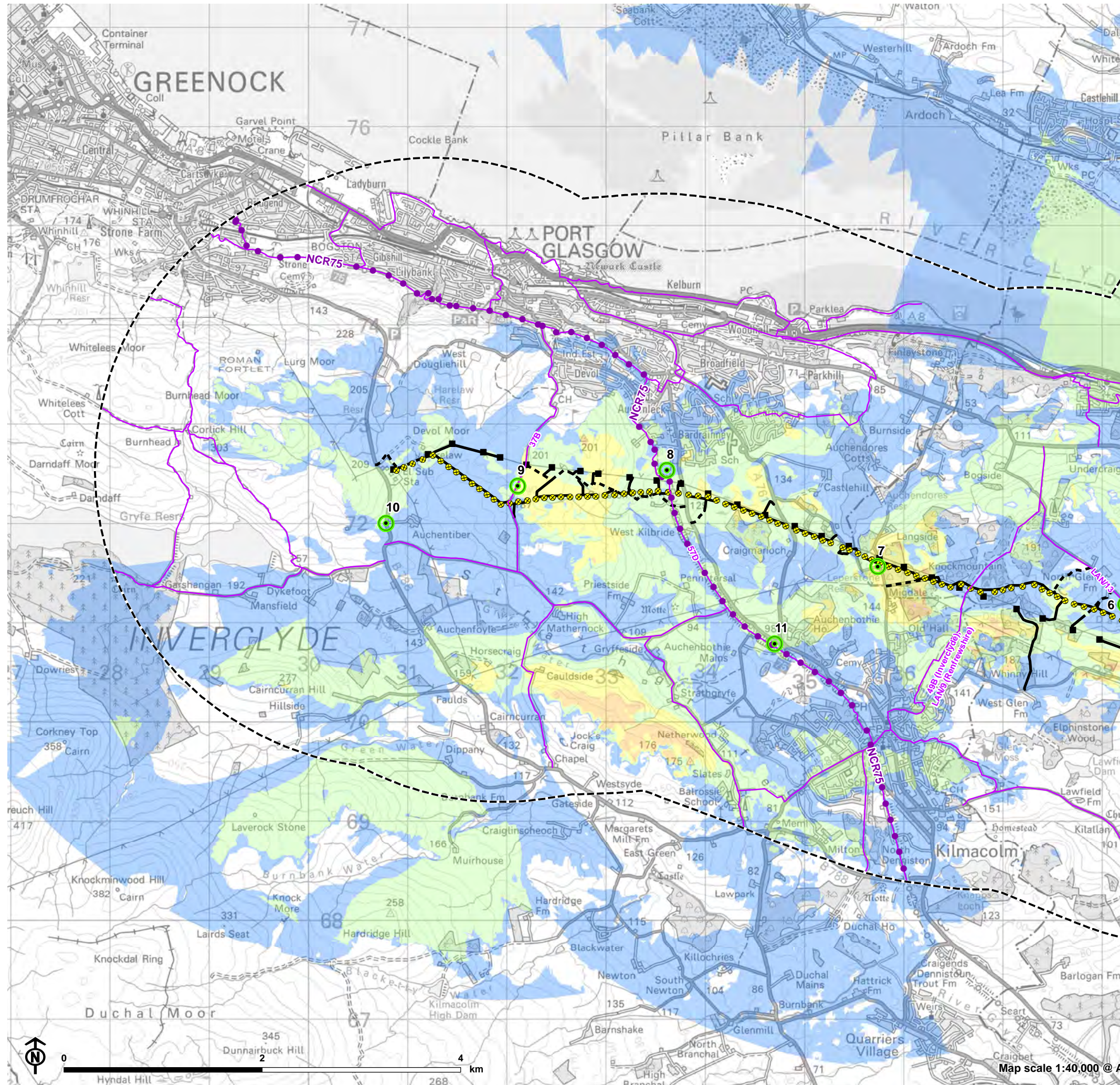


Figure 6.1.2a: Pole Tip Height Zone of Theoretical Visibility (ZTV) and Viewpoint Locations



- Study Area
  - New 132kV OHL (wood pole)
  - Existing 132kV OHL (towers to be removed)
  - New Access
  - New Access (Stone)
  - Existing Access
  - Core Path
  - Sustrans National Cycle Route (NCR)
- Number of Wood Poles Visible**
- 1 - 19
  - 20 - 37
  - 38 - 55
  - 56 - 73
  - 74 - 91
- Viewpoint
  - 6. Gallahill Road
  - 7. Finlaystone Road
  - 8. Port Glasgow
  - 9. Devol Road
  - 10. B788 Kilmacolm Road
  - 11. A716 junction with Auchenbothie Road

**Notes:**

The ZTV has been generated based on individual poles heights (including insulator) which range between 9.76m and 18.76m, to a 5km radius from each pole.

The terrain model assumes bare ground and is derived from OS Terrain 5 height data.

Earth curvature and atmospheric refraction have been taken into account. The ZTV was calculated using ArcMap 10.5.1.

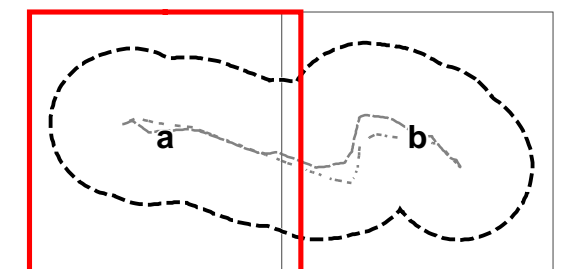
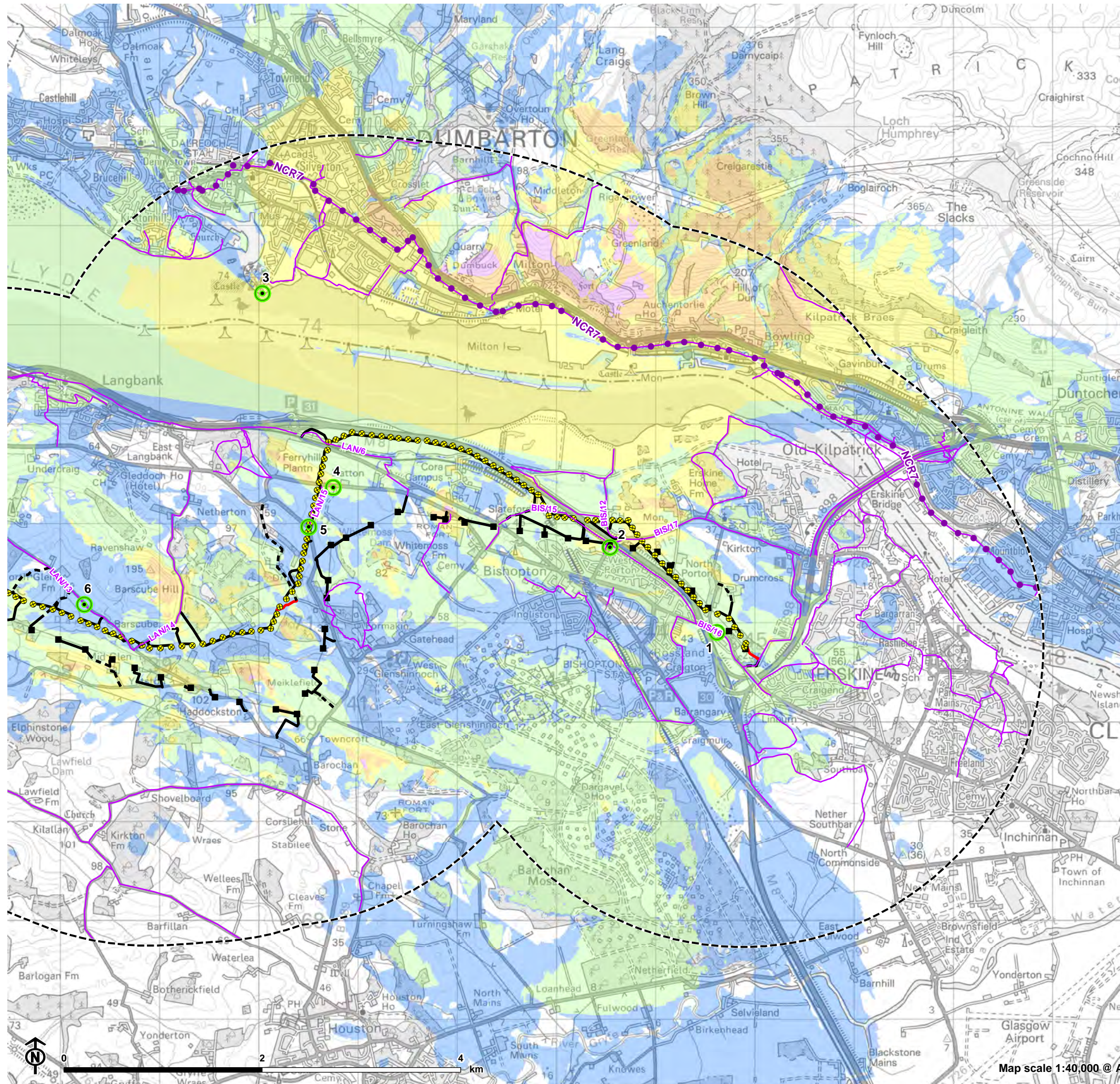




Figure 6.1.2b: Pole Tip Height Zone of Theoretical Visibility (ZTV) and Viewpoint Locations



- Study Area
- New 132kV OHL (wood pole)
- Existing 132kV OHL (towers to be removed)
- New Access
- New Access (Stone)
- Existing Access
- Core Path
- Sustrans National Cycle Route (NCR)

**Number of Wood Poles Visible**

- 1 - 19
- 20 - 37
- 38 - 55
- 56 - 73
- 74 - 91

Viewpoint

1. Old Greenock Road north of Bishopton
2. B815 Motorway Overbridge
3. Dumbarton Castle
4. Old Greenock Road
5. B789
6. Gallahill Road

**Notes:**

The ZTV has been generated based on individual poles heights (including insulator) which range between 9.76m and 18.76m, to a 5km radius from each pole.

The terrain model assumes bare ground and is derived from OS Terrain 5 height data.

Earth curvature and atmospheric refraction have been taken into account. The ZTV was calculated using ArcMap 10.5.1.

