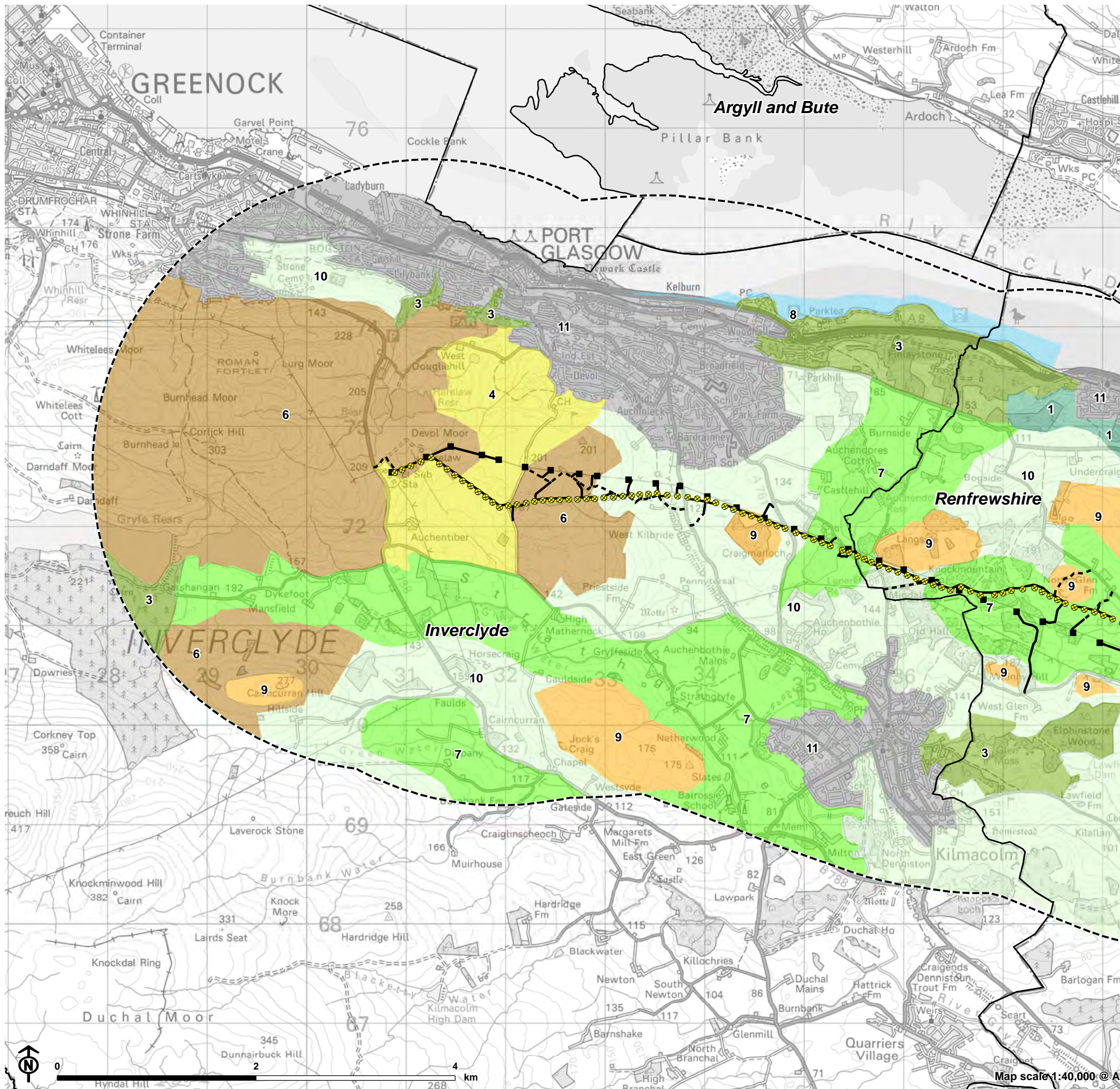


Figure 6.1.3a: Landscape Character Types



- Study Area
  - New 132kV OHL (wood pole)
  - Existing 132kV OHL (towers to be removed)
  - New Access
  - New Access (Stone)
  - Existing Access
- Local Landscape Character Types**
- 1. Escarpment
  - 2. Foothills
  - 3. Forestry
  - 4. Improved Upland Pasture
  - 5. Lowland Arable Farmland
  - 6. Moorland
  - 7. Pastoral Valley
  - 8. Raised Beach/Coastal Edge
  - 9. Rocky Hills & Ridges
  - 10. Rolling Pastureland
  - 11. Settlement and Industry
  - Local Authority Boundary

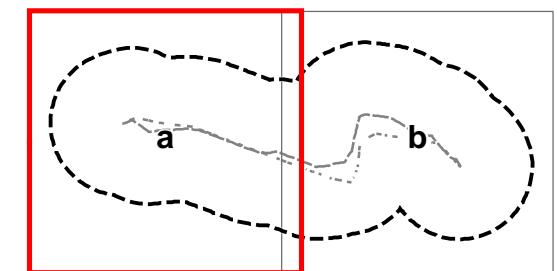
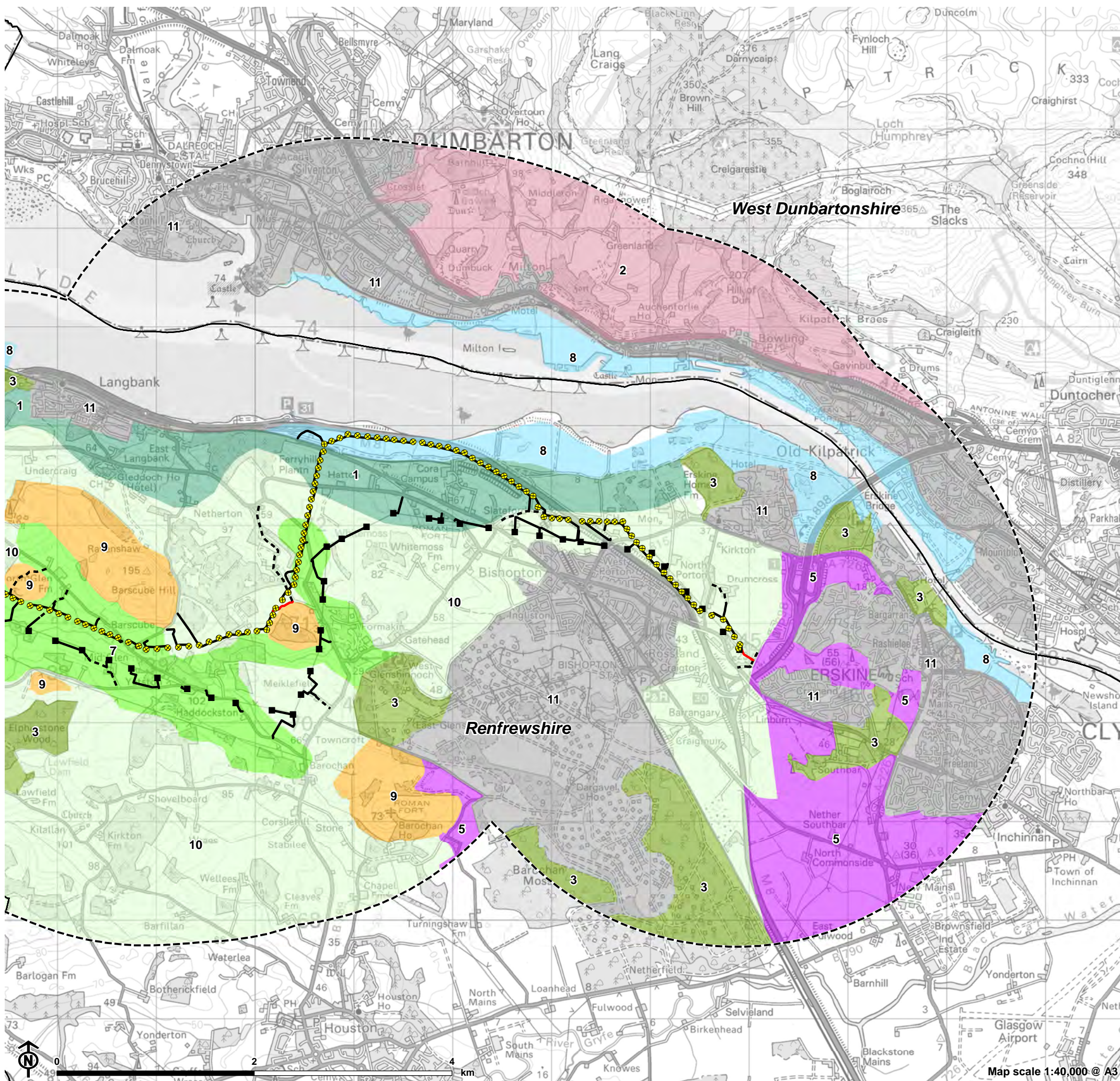


Figure 6.1.3b: Landscape Character Types



- Study Area
  - New 132kV OHL (wood pole)
  - Existing 132kV OHL (towers to be removed)
  - New Access
  - New Access (Stone)
  - Existing Access
- Local Landscape Character Types**
- 1. Escarpment
  - 2. Foothills
  - 3. Forestry
  - 4. Improved Upland Pasture
  - 5. Lowland Arable Farmland
  - 6. Moorland
  - 7. Pastoral Valley
  - 8. Raised Beach/Coastal Edge
  - 9. Rocky Hills & Ridges
  - 10. Rolling Pastureland
  - 11. Settlement and Industry
  - Local Authority Boundary

