



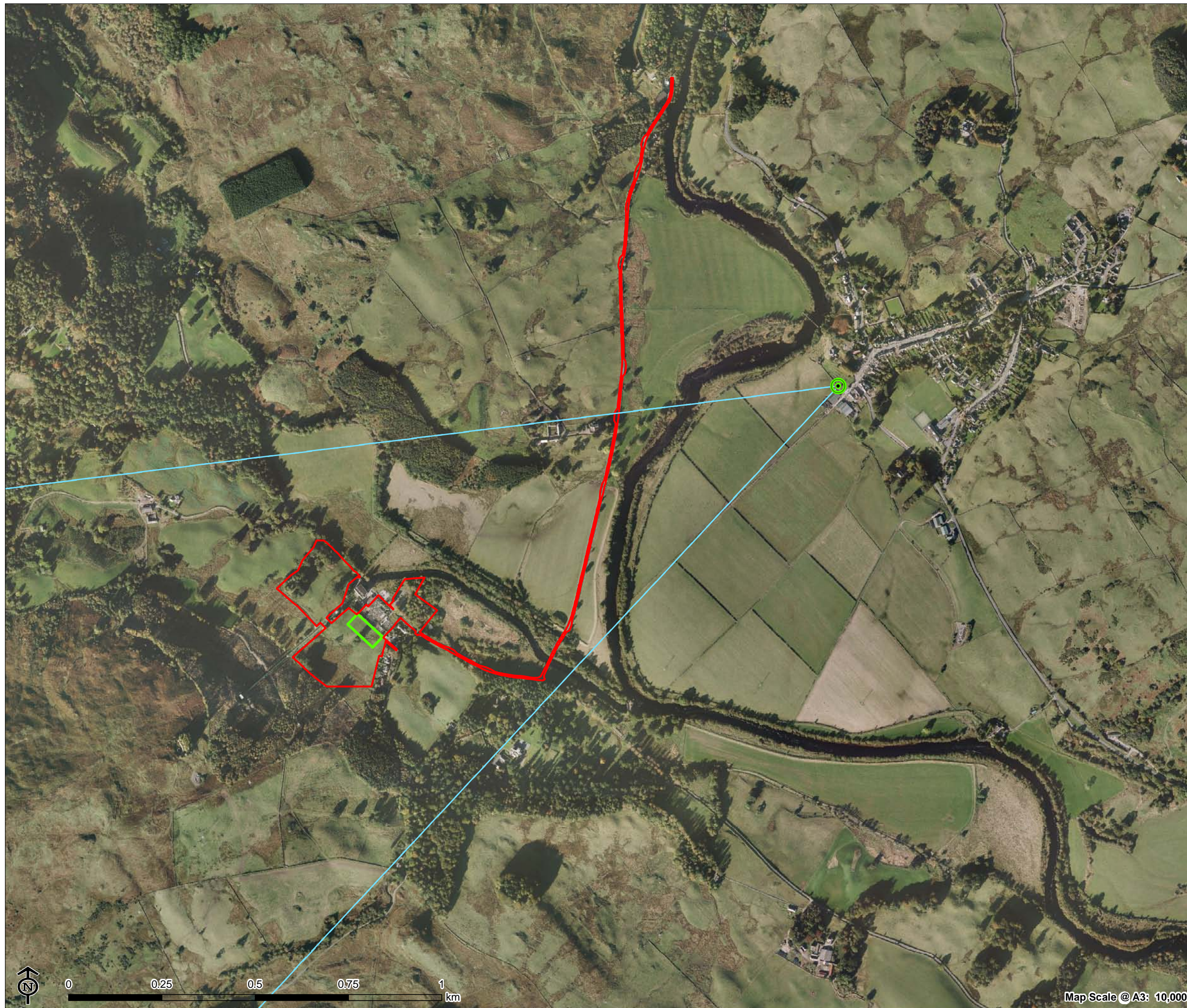


Figure 6.7.1:
Viewpoint 4: St John's Town of Dalry
Church

-  Planning application boundary
-  Substation extension
-  Viewpoint
-  Field of View 40°





View flat at a comfortable arm's length

Figure 6.7.2
Viewpoint 4: St John's Town of Dalry Church

OS reference:	261886 E 581102 N	Horizontal field of view:	40° (planar projection)	Camera:	Nikon D750
AOD:	59 m	Paper size:	420 x 297 mm (A3)	Lens:	Nikkor AF 50mm 1:1.8D
Direction of view:	243°	Correct printed image size:	390 x 260 mm	Camera height:	1.5 m AGL
				Date and time:	20/06/2017 16:45