

Eastern Green Link 4: Scottish Onshore Scheme

Volume 4: Visualisations

December 2025





Prepared for:

SP Energy Networks
320 St Vincent St
Glasgow, G2 5AD

Prepared by:

AECOM Limited
1 Tanfield
Edinburgh EH3 5DA
United Kingdom

Table of Contents

Viewpoint 1: Fife Pilgrim Way and core path network – Baseline

Viewpoint 1: Fife Pilgrim Way and core path network – Wireline

Viewpoint 2: B9097 east of Lochore – Baseline

Viewpoint 2: B9097 east of Lochore – Proposed (Year 1)

Viewpoint 2: B9097 east of Lochore – Proposed (Year 15)

Viewpoint 3: Core path network east of Lochore – Baseline

Viewpoint 3: Core path network east of Lochore – Proposed (Year 1)

Viewpoint 3: Core path network east of Lochore – Proposed (Year 15)

Viewpoint 4: Northern edge of Auchterderran – Baseline

Viewpoint 4: Northern edge of Auchterderran – Wireline

Viewpoint 4: Northern edge of Auchterderran – Proposed (Year 1)

Viewpoint 4: Northern edge of Auchterderran – Proposed (Year 15)

Viewpoint 5: Dunmore Hill Fort – Baseline

Viewpoint 5: Dunmore Hill Fort – Proposed (Year 1)

Viewpoint 5: Dunmore Hill Fort – Proposed (Year 15)

Viewpoint 6: Southern edge of Kinglassie – Baseline

Viewpoint 6: Southern edge of Kinglassie – Wireline

Viewpoint 6: Southern edge of Kinglassie – Proposed (Year 1)

Viewpoint 6: Southern edge of Kinglassie – Proposed (Year 15)

Viewpoint 7: Local core path network north of Scotlandwell – Baseline

Viewpoint 7: Local core path network north of Scotlandwell – Proposed (Year 1)

Viewpoint 7: Local core path network north of Scotlandwell – Proposed (Year 15)

Viewpoint 8: B981 east of Cardenden – Baseline

Viewpoint 8: B981 east of Cardenden – Wireline

Viewpoint 8: B981 east of Cardenden – Proposed (Year 1)

Viewpoint 8: B981 east of Cardenden – Proposed (Year 15)

Viewpoint 9: B981 west of Auchterderran – Baseline

Viewpoint 9: B981 west of Auchterderran – Wireline

Viewpoint 10: Unnamed road south of A92 near Cardenden – Baseline

Viewpoint 11: Core path network to north of Auchtertool - Baseline

Viewpoint 12: Core path network to southeast of Auchtertool - Baseline

Viewpoint 12: Core path network to southeast of Auchtertool - Wireline

Viewpoint 13: Core path network to the north of Kinghorn - Baseline

Viewpoint 14: Fife Coastal Path, Kinghorn - Baseline



Westfield Biomass Plant

Westfield Energy Recovery Facility

Existing overhead towers and lines

Existing wind turbines

BASELINE

Extent of 50mm single frame image



Visualisation Type: 3
 Projection: Cylindrical
 Enlargement Factor: 96%
 Paper Size: A1
 Date / Time: 11/06/2025, 17:39

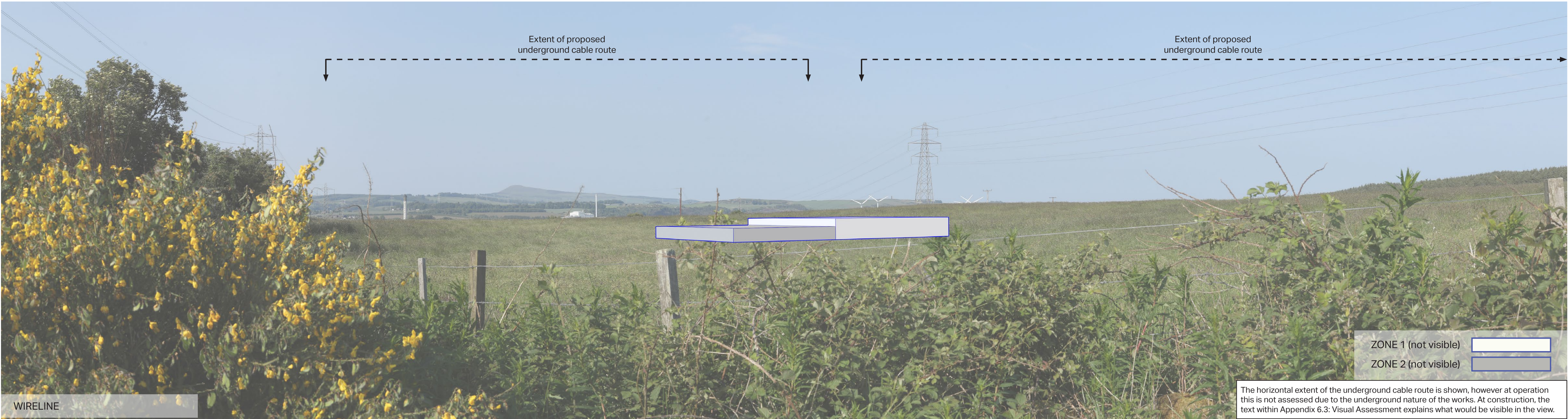
Camera: Canon EOS 5D MK IV
 Lens: 50mm F1.4 DG HSM
 Horizontal Field of View: 90°
 Direction of View: North East
 Location: E318717, N696379

Eye level: 128.4m
 Height of Camera: 1.6m

Note:
 Images to be viewed at a comfortable arm's length.

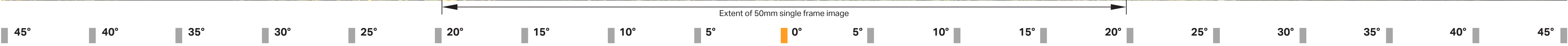
Eastern Green Link 4

Viewpoint 1: Fife Pilgrim Way and core path network



WIRELINER

The horizontal extent of the underground cable route is shown, however at operation this is not assessed due to the underground nature of the works. At construction, the text within Appendix 6.3: Visual Assessment explains what would be visible in the view.



Delivering a better world
 Visualisation Type: 3
 Projection: Cylindrical
 Enlargement Factor: 96%
 Paper Size: A1
 Date / Time: 11/06/2025, 17:39

Camera: Canon EOS 5D MK IV
 Lens: 50mm F1.4 DG HSM
 Horizontal Field of View: 90°
 Direction of View: North East
 Location: E318717, N696379

Eye level: 128.4m
 Height of Camera: 1.6m

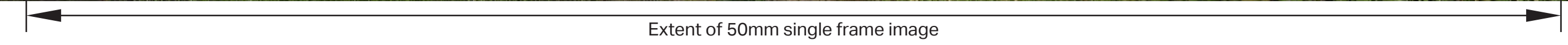
Note:
 Images to be viewed at a comfortable arm's length.
 The block photomontage shows the maximum parameters for the Converter Station.

Eastern Green Link 4

Viewpoint 1: Fife Pilgrim Way and core path network



BASELINE



AECOM Delivering a better world

Visualisation Type: 3
 Projection: Cylindrical
 Enlargement Factor: 96%
 Paper Size: A1
 Date / Time: 12/06/2025, 10:11

Camera: Canon EOS 5D MK IV
 Lens: 50mm F1.4 DG HSM
 Horizontal Field of View: 90°
 Direction of View: West
 Location: E320337 N697314

Eye level: 90.3m
 Height of Camera: 1.6m

Note:
 Images to be viewed at a comfortable arm's length.

Eastern Green Link 4
 Viewpoint 2: B9097 east of Lochore



Extent of proposed underground cable route

Extent of 50mm single frame image

PROPOSED (YEAR 1)

ZONE 1
 ZONE 2

The horizontal extent of the underground cable route is shown, however at operation this is not assessed due to the underground nature of the works. At construction, the text within Appendix 6.3: Visual Assessment explains what would be visible in the view.



Delivering a better world
 Visualisation Type: 3
 Projection: Cylindrical
 Enlargement Factor: 96%
 Paper Size: A1
 Date / Time: 12/06/2025, 10:11

Camera: Canon EOS 5D MK IV
 Lens: 50mm F1.4 DG HSM
 Horizontal Field of View: 90°
 Direction of View: West
 Location: E320337 N697314

Eye level: 90.3m
 Height of Camera: 1.6m

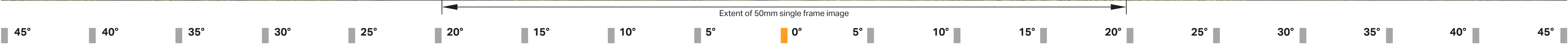
Note:
 Images to be viewed at a comfortable arm's length.
 The block photomontage shows the maximum parameters for the Converter Station.

Eastern Green Link 4
 Viewpoint 2: B9097 east of Lochore



PROPOSED (YEAR 15)

The horizontal extent of the underground cable route is shown, however at operation this is not assessed due to the underground nature of the works. At construction, the text within Appendix 6.3: Visual Assessment explains what would be visible in the view.



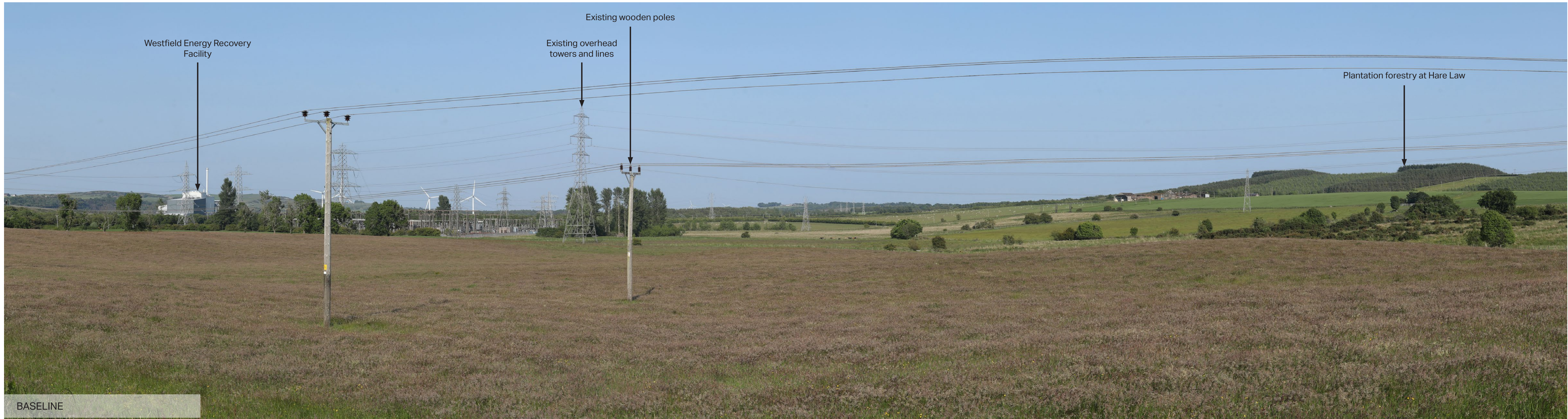
Delivering a better world
 Visualisation Type: 3
 Projection: Cylindrical
 Enlargement Factor: 96%
 Paper Size: A1
 Date / Time: 12/06/2025, 10:11

Camera: Canon EOS 5D MK IV
 Lens: 50mm F1.4 DG HSM
 Horizontal Field of View: 90°
 Direction of View: West
 Location: E320337 N697314

Eye level: 90.3m
 Height of Camera: 1.6m

Note:
 Images to be viewed at a comfortable arm's length.
 The block photomontage shows the maximum parameters for the Converter Station.

Eastern Green Link 4
 Viewpoint 2: B9097 east of Lochore



Westfield Energy Recovery Facility

Existing overhead towers and lines

Existing wooden poles

Plantation forestry at Hare Law

BASELINE

Extent of 50mm single frame image



AECOM Delivering a better world

Visualisation Type: 3
 Projection: Cylindrical
 Enlargement Factor: 96%
 Paper Size: A1
 Date / Time: 11/06/2025, 18:24

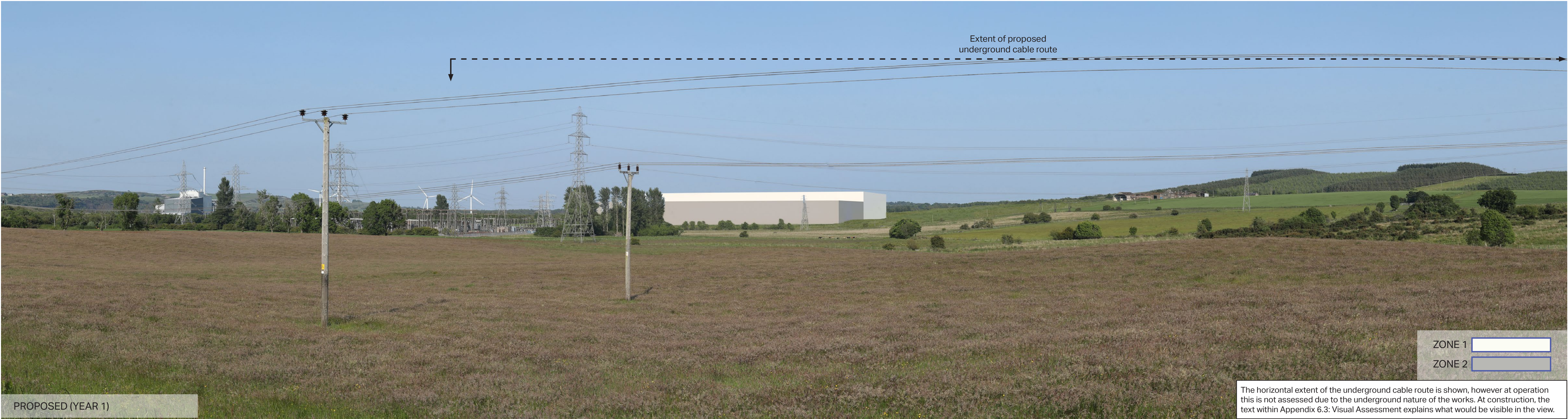
Camera: Canon EOS 5D MK IV
 Lens: 50mm F1.4 DG HSM
 Horizontal Field of View: 90°
 Direction of View: East
 Location: E318688 N697384

Eye level: 98.1m
 Height of Camera: 1.6m

Note:
 Images to be viewed at a comfortable arm's length.

Eastern Green Link 4

Viewpoint 3: Core path network east of Lochore



Extent of proposed underground cable route

PROPOSED (YEAR 1)

ZONE 1

ZONE 2

The horizontal extent of the underground cable route is shown, however at operation this is not assessed due to the underground nature of the works. At construction, the text within Appendix 6.3: Visual Assessment explains what would be visible in the view.

Extent of 50mm single frame image



AECOM Delivering a better world

Visualisation Type: 3
 Projection: Cylindrical
 Enlargement Factor: 96%
 Paper Size: A1
 Date / Time: 11/06/2025, 18:24

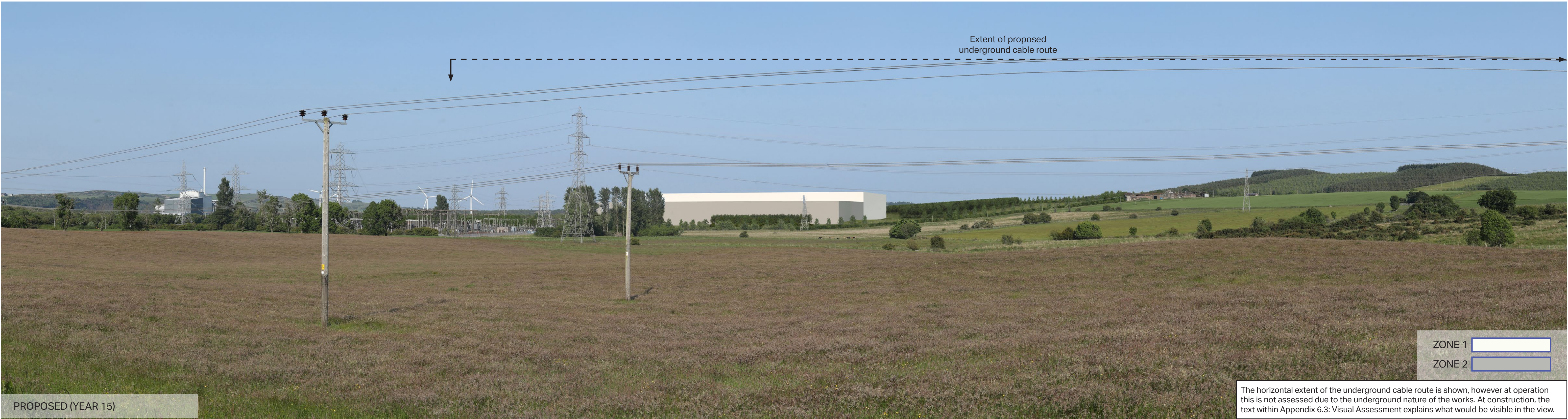
Camera: Canon EOS 5D MK IV
 Lens: 50mm F1.4 DG HSM
 Horizontal Field of View: 90°
 Direction of View: East
 Location: E318688 N697384

Eye level: 98.1m
 Height of Camera: 1.6m

Note:
 Images to be viewed at a comfortable arm's length.
 The block photomontage shows the maximum parameters for the Converter Station.

Eastern Green Link 4

Viewpoint 3: Core path network east of Lochore



PROPOSED (YEAR 15)

The horizontal extent of the underground cable route is shown, however at operation this is not assessed due to the underground nature of the works. At construction, the text within Appendix 6.3: Visual Assessment explains what would be visible in the view.



AECOM Delivering a better world

Visualisation Type: 3
 Projection: Cylindrical
 Enlargement Factor: 96%
 Paper Size: A1
 Date / Time: 11/06/2025, 18:24

Camera: Canon EOS 5D MK IV
 Lens: 50mm F1.4 DG HSM
 Horizontal Field of View: 90°
 Direction of View: East
 Location: E318688 N697384

Eye level: 98.1m
 Height of Camera: 1.6m

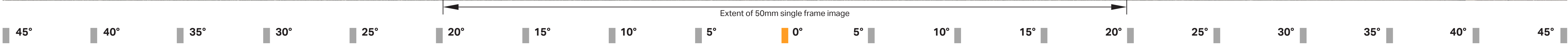
Note:
 Images to be viewed at a comfortable arm's length.
 The block photomontage shows the maximum parameters for the Converter Station.

Eastern Green Link 4

Viewpoint 3: Core path network east of Lochore



BASELINE



AECOM Delivering a better world

Visualisation Type: 3
 Projection: Cylindrical
 Enlargement Factor: 96%
 Paper Size: A1
 Date / Time: 12/06/2025, 09:27

Camera: Canon EOS 5D MK IV
 Lens: 50mm F1.4 DG HSM
 Horizontal Field of View: 90°
 Direction of View: North East
 Location: E320971, N696517

Eye level: 95.6m
 Height of Camera: 1.6m

Note:
 Images to be viewed at a comfortable arm's length.

Eastern Green Link 4
 Viewpoint 4: Northern edge of Auchterderran