

Flexibility Services

**October 2019
Tender Results**

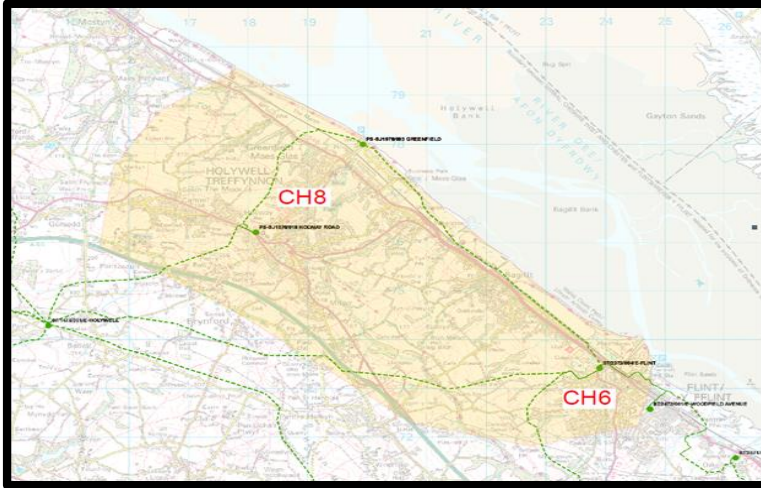


The results of the tenders for Flexibility Services for each location issued in October 2019 are included in this document:

1. Flintshire
2. Ringway
3. Newtown/Welshpool
4. Carrington
5. North Shropshire
6. Crewe
7. Broxburn
8. Berwick
9. Durie House
10. Paulville



FLINTSHIRE



Flexibility providers operating in the following postcode areas are required.

CH6
CH8

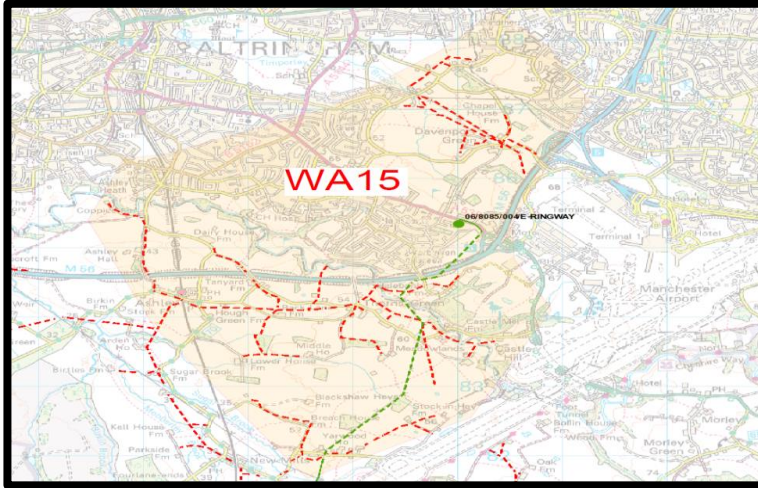
TENDER RESULT SUMMARY:

- Bids were received from 2 providers
- Following technical, commercial and company assessment a contract was awarded for both Restore and Post Fault services.
- No bids were received for reactive power (MVarh)

SERVICE REQUIREMENTS												TENDER RESULT			
Year	Response Type				Period	Service Window	Days	Service Type	Duration	Availability Rate £/MW/h or £/MVAr/h	Utilisation Rate £/MWh or £/MVArh	CAPACITY ACCEPTED		Availability Rate £/MW/h	Utilisation Rate £/MWh
	Demand (+ increase/ - reduce)		Generation (+ export / -import)									MW	MVAR		
	MW	MVAR	MW	MVAR											
2020/21	-4.18	-1.375	4.18	1.375	Winter	16:30 – 19:30	Mon-Fri	Post Fault	3 Hours	5	400	4.18	0	5	400
	-15.675	-5.148	15.675	5.148	Summer	07:30-22:30		Restore		0	1000	7.5	0	0	1000
2021/22	-4.73	-1.551	4.73	1.551	Winter	16:00 – 19:30		Post Fault		5	400	4.73	0	5	400
	-19.36	-6.38	19.36	6.38	Summer	07:00-22:30		Restore		0	1000	7.5	0	0	1000
2022/23	-5.225	-1.936	5.225	1.936	Winter	09:30 – 13:30 16:00 – 19:30		Post Fault		5	400	5.25	0	5	400
	-20.9	-6.875	20.9	6.875	Summer	07:00-22:30		Restore		0	1000	7.5	0	0	1000



RINGWAY



Flexibility providers operating in the following postcode areas are required.

WA15

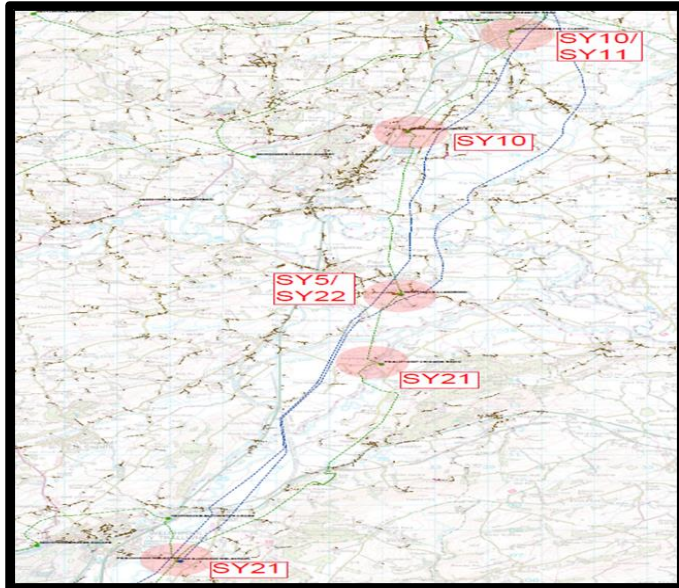
TENDER RESULT SUMMARY:

Due to insufficient volume of providers meeting the pre-qualification criteria within the required area, this location was not progressed to Competitive Tender.

SERVICE REQUIREMENTS												TENDER RESULT			
Year	Response Type				Period	Service Window	Days	Service Type	Duration	Availability Rate £/MW/h or £/MVAr/h	Utilisation Rate £/MWh or £/MVArh	CAPACITY ACCEPTED		Availability Rate £/MW/h	Utilisation Rate £/MWh
	Demand (+ increase/ - reduce)		Generation (+ export / -import)									MW	MVAR		
	MW	MVAR	MW	MVAR											
2020/21	-0.55	-0.187	0.55	0.187	Winter	11:00 - 21:00	All	Post Fault	3 Hours	15	400	n/a	n/a	n/a	n/a



NEWTOWN/WELSHPOOL



Flexibility providers operating in the following postcode areas are required.

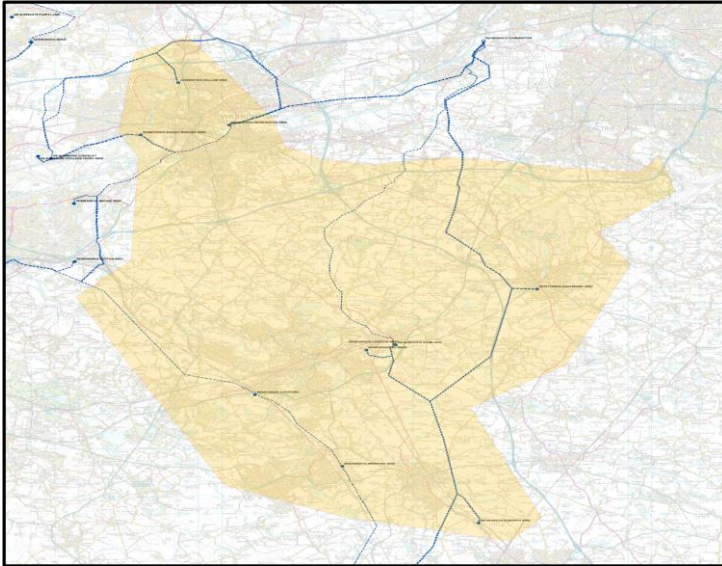
SY5
SY10
SY11
SY21
SY22

TENDER RESULT SUMMARY:

Due to insufficient volume of providers meeting the pre-qualification criteria within the required area, this location was not progressed to Competitive Tender.

SERVICE REQUIREMENTS										TENDER RESULT		
Year	Response Type		Period	Service Window	Days	Service Type	Duration	Availability Rate £/MW/h or £/MVAR/h	Utilisation Rate £/MWh or £/MVARh	CAPACITY ACCEPTED	Availability Rate £/MW/h	Utilisation Rate £/MWh
	Demand (+ - reduce)	Generati (+ export -import)										
	MW	MW								MW		
2020/21	-3.96	3.96	Summer	06:30-21:00	Mon-Fri	Post Fault / Planned Outage	3 Hours	15	400	n/a	n/a	n/a
	-4.4	4.4	Winter	06:30-21:00	Mon-Fri	Post Fault		15	400	n/a	n/a	n/a

CARRINGTON-FIDDLERS FERRY



Flexibility providers operating in the following postcode areas are required.

- CW10,CW7,CW9,CW8,CW4
- WA1,WA2,WA3,WA4, WA5, WA6
- WA13,WA15, WA16

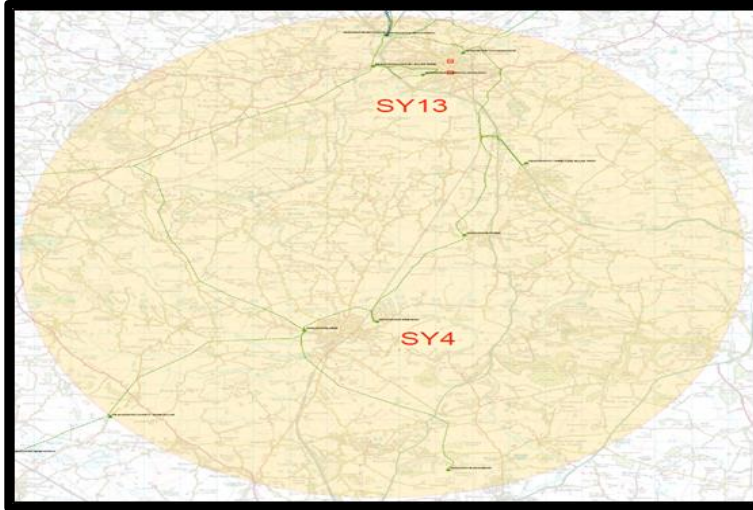
TENDER RESULT SUMMARY:

- Bids were received from 3 providers
- Following technical, commercial and company assessment a contract was awarded.

SERVICE REQUIREMENTS										TENDER RESULT		
Year	Response Type		Period	Service Window	Days	Service Type	Duration	Availability Rate £/MW/h or £/MVAR/h	Utilisation Rate £/MWh or £/MVARh	CAPACITY ACCEPTED	Availability Rate £/MW/h	Utilisation Rate £/MWh
	Demand (+ increase/ - reduce)	Generation (+ export / -import)										
	MW	MW								MW		
2022/23	-11.44	11.44	Summer	17:00-18:00	Mon-Fri	Post Fault	1 Hour	75	600	4	19	100
										3.44	29	100
										4	39	100



NORTH SHROPSHIRE



Flexibility providers operating in the following postcode areas are required.

SY4
SY13

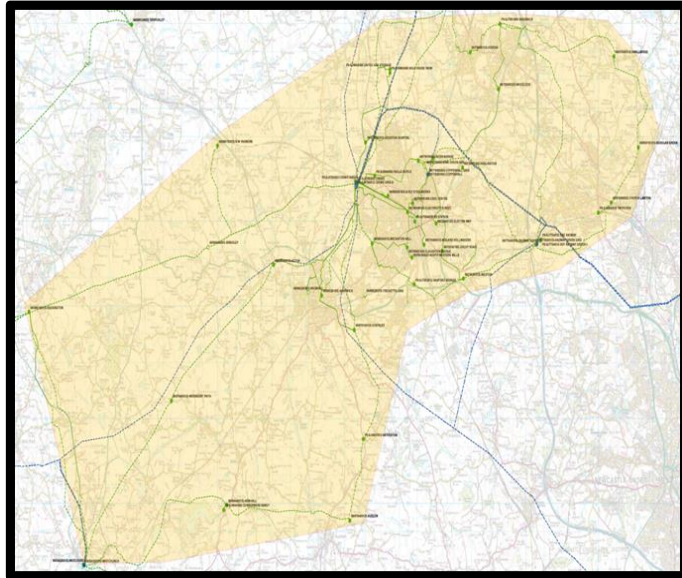
TENDER RESULT SUMMARY:

- Bids were received from one provider.
- The technical assessment confirmed that the total capacity bid was not sufficient to alleviate the voltage constraints in the network.
- Unable to place a contract at this time

SERVICE REQUIREMENTS											TENDER RESULT			
Year	Response Type				Period	Service Window	Days	Service Type	Duration	Availability Rate £/MW/h or £/MVAR/h	Utilisation Rate £/MWh or £/MVARh	CAPACITY ACCEPTED	Availability Rate £/MW/h	Utilisation Rate £/MWh
	Demand (+ increase/ - reduce)		Generation (+ export / -import)									MW		
	MW	MVAR	MW	MVAR										
2020/21	-6.05	-1.98	6.05	1.98	Summer	07:00 – 19:00	Mon-Fri	Post Fault/ Planned Outage	3 Hours	15	400	0	n/a	n/a
	-8.03	-2.64	8.03	2.64	Winter	06:30 – 20:00	All Days	Post Fault		15	400	0	n/a	n/a
2021/22	-6.6	-2.2	6.6	2.2	Summer	07:00 – 19:00	Mon-Fri	Post Fault/ Planned Outage		15	400	0	n/a	n/a
	-8.8	-2.86	8.8	2.86	Winter	06:30 – 20:30	All Days	Post Fault		15	400	0	n/a	n/a
2022/23	-7.15	-2.31	7.15	2.31	Summer	07:00 – 18:30	Mon-Sat	Post Fault/ Planned Outage		15	400	0	n/a	n/a
	-9.46	-3.08	9.46	3.08	Winter	06:00 – 20:30	All Days	Post Fault		15	400			



CREWE



Flexibility providers operating in the following postcode areas are required.

CW1 CW2
CW3 CW5
CW11 CW12
SY14 ST7

TENDER RESULT SUMMARY:

Bids were received from one provider for 2022/23
Following technical, commercial and company assessment a Restore contract was awarded for that year.

SERVICE REQUIREMENTS										TENDER RESULT		
Year	Response Type		Period	Service Window	Days	Service Type	Duration	Availability Rate £/MW/h or £/MVAR/h	Utilisation Rate £/MWh or £/MVARh	CAPACITY ACCEPTED	Availability Rate £/MW/h	Utilisation Rate £/MWh
	Demand (+ increase/ - reduce)	Generation (+ export / - import)										
	MW	MW								MW		
2020/21	-27.72	27.72	Summer	07:30-21:30	All	Restore	1 Hour	0	1000	n/a	n/a	n/a
2021/22	-29.15	29.15	Summer	07:30-21:30		Restore		0	1000	n/a	n/a	n/a
2022/23	-33.0	33.0	Summer	07:30-21:30		Restore		0	1000	7 7 7 7 5	n/a	497 597 697 797 897



BROXBURN

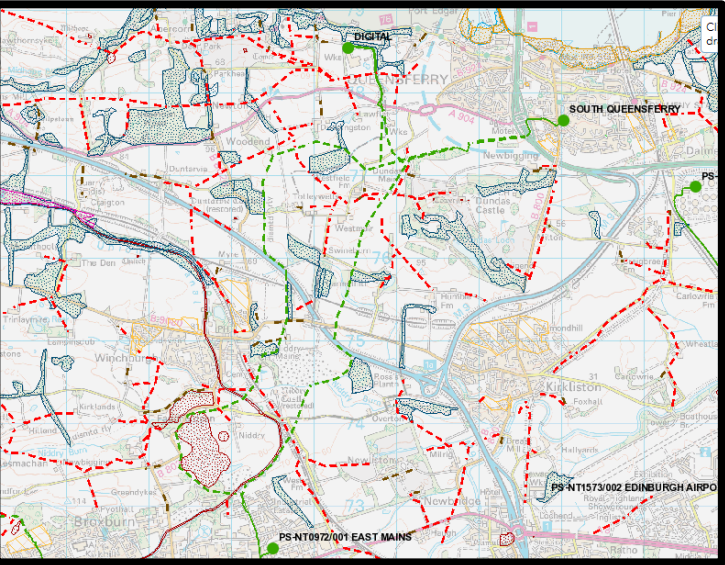


Flexibility providers operating in the following postcode areas are required.

EH29, EH5, EH52, DG2, DG2, EH15,
EH2, EH27, EH3, EH30, EH4, EH49, EH52

TENDER RESULT SUMMARY:

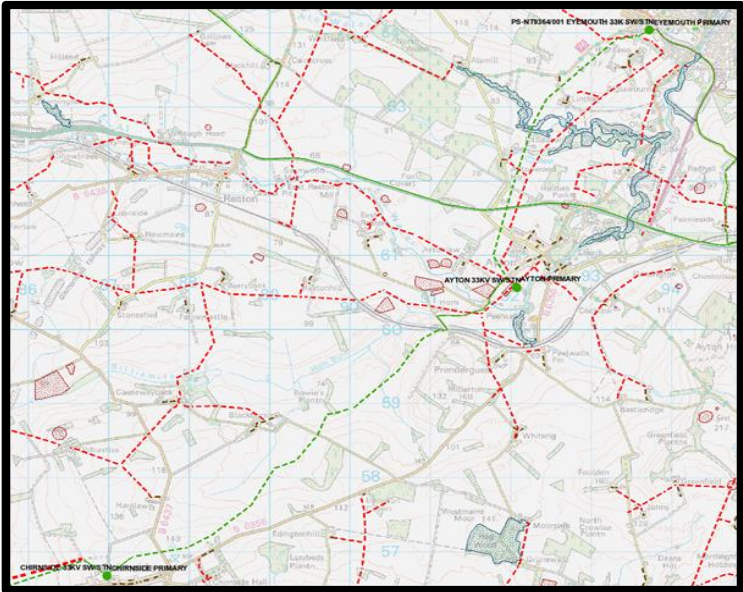
Bids were received from one provider for 2021/22 and 2022/23 only.
As not able to place contracts for the 3 year service window required, we were unable to place a contract at this time.



SERVICE REQUIREMENTS										TENDER RESULT		
Year	Response Type		Period	Service Window	Days	Service Type	Duration	Availability Rate £/MW/h or £/MVAR/h	Utilisation Rate £/MWh or £/MVARh	CAPACITY ACCEPTED	Availability Rate £/MW/h	Utilisation Rate £/MWh
	Demand (+ increase/ - reduce)	Generation (+ export / -import)										
	MW	MW								MW		
2020/21	-1.254	1.254	Nov-Jan	16:00-17:30	Mon-Fri	Post Fault	3 Hours	75	600	0	n/a	n/a
2021/22	-1.397	1.397	Nov-Jan	16:00-17:31	Mon-Fri	Post Fault		75	600	0	n/a	n/a
2022/23	-1.54	1.54	Nov-Jan	16:00-17:32	Mon-Fri	Post Fault		75	600	0	n/a	n/a



BERWICK



Flexibility providers operating in the following postcode areas are required.

- TD11
- TD14
- TD15
- TD1

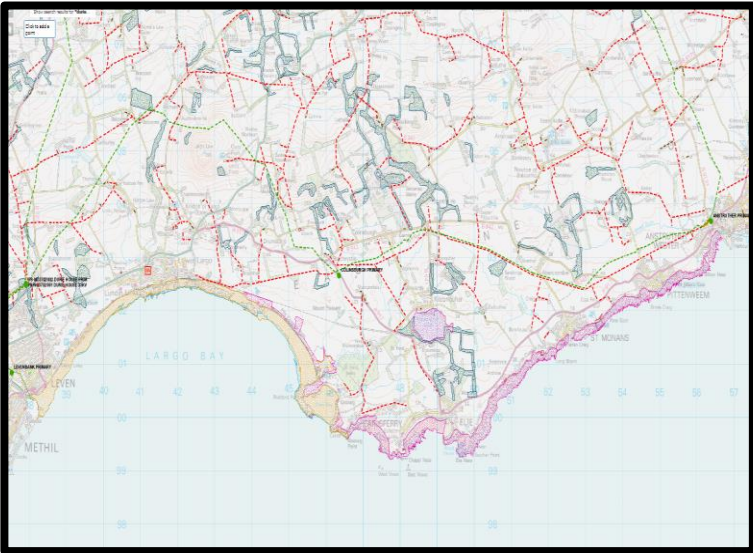
TENDER RESULT SUMMARY:

Bids were received from one provider for 2021/22 and 2022/23 only.
As not able to place contracts for the 3 year service window, we were unable to place a contract at this time.

SERVICE REQUIREMENTS										TENDER RESULT		
Year	Response Type		Period	Service Window	Days	Service Type	Duration	Availability Rate £/MW/h or £/MVAR/h	Utilisation Rate £/MWh or £/MVARh	CAPACITY ACCEPTED	Availability Rate £/MW/h	Utilisation Rate £/MWh
	Demand (+ increase/ - reduce)	Generation (+ export / -import)										
	MW	MW								MW		
2020/21	-3.762	3.762	Nov-Feb	00:00-23:30	All	Post Fault	3 Hours	5	200	0	n/a	n/a
2021/22	-3.894	3.894	Oct-Feb	00:00-23:30		Post Fault		5	200	0	n/a	n/a
2022/23	-4.037	4.037	Oct-Feb	00:00-23:30		Post Fault		5	200	0	n/a	n/a



DURIE HOUSE



Flexibility providers operating in the following postcode areas are required:

KY8, KY15, KY7, KY9, PH1, KY1, KY10, KY16

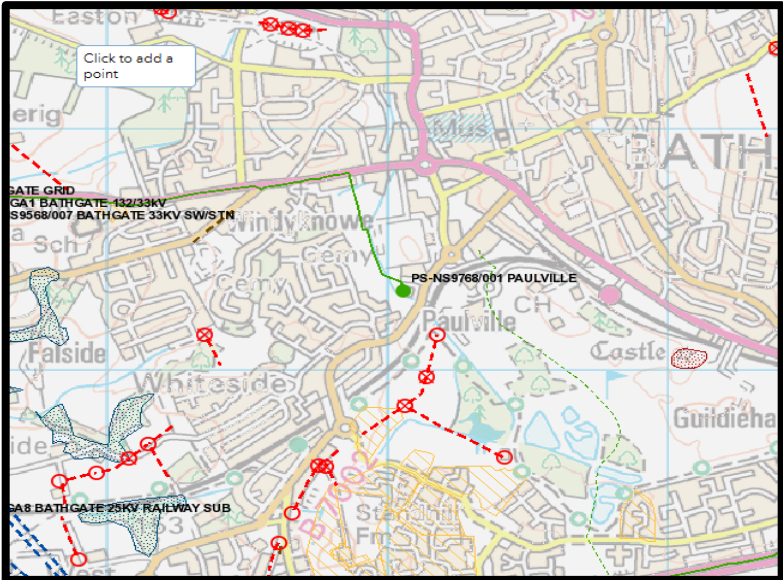
TENDER RESULT SUMMARY:

Bids were received from one provider for 2021/22 and 2022/23 only.
As not able to place contracts for the 3 year service window, we were unable to place a contract at this time.

SERVICE REQUIREMENTS										TENDER RESULT		
Year	Response Type		Period	Service Window	Days	Service Type	Duration	Availability Rate £/MW/h or £/MVAR/h	Utilisation Rate £/MWh or £/MVARh	CAPACITY ACCEPTED	Availability Rate £/MW/h	Utilisation Rate £/MWh
	Demand (+ increase/ - reduce)	Generation (+ export / -import)										
	MW	MW								MW		
2020/21	-0.616	0.616	Nov-Jan	16:00-18:00	Mon-Fri	Post Fault	3 Hours	75	600	0	n/a	n/a
2021/22	-0.671	0.671	Nov-Jan	16:00-18:00		Post Fault		75	600	0	n/a	n/a
2022/23	-0.737	0.737	Nov-Jan	16:00-18:00		Post Fault		75	600	0	n/a	n/a



PAULVILLE



Flexibility providers operating in the following postcode areas are required.

CW9, EH18, EH4, EH47, EH48, EH49, ML11

TENDER RESULT SUMMARY:

Bids were received from one provider for 2021/22 and 2022/23 only.
As not able to place contracts for the 3 year service window, we were unable to place a contract at this time.

SERVICE REQUIREMENTS										TENDER RESULT		
Year	Response Type		Period	Service Window	Days	Service Type	Duration	Availability Rate £/MW/h or £/MVAR/h	Utilisation Rate £/MWh or £/MVARh	CAPACITY ACCEPTED	Availability Rate £/MW/h	Utilisation Rate £/MWh
	Demand (+ increase/ - reduce)	Generation (+ export / -import)								MW		
	MW	MW										
2020/21	-1.87	1.87	Nov-Feb	08:30-20:00	All	Post Fault	3 Hours	25	600	0	n/a	n/a
2021/22	-1.98	1.98	Nov-Feb	08:30-20:00		Post Fault		25	600	0	n/a	n/a
2022/23	-1.98	1.98	Nov-Feb	08:30-20:00		Post Fault		25	600	0	n/a	n/a