

Proposed Ewe Hill to Hopsrig 132kv Overhead Line Grid Connection



Consultation Leaflet

The Project

SP Energy Networks (SPEN) has a legal duty under the Electricity Act 1989 to provide grid connections to new electricity generating developments. SPEN has been approached by the developers for the Hopsrig, Loganhead and Crossdykes Extension Wind Farms to provide a grid connection from the proposed Hopsrig 132kV Collector Substation to the wider electricity transmission network at the existing Ewe Hill Substation. These wind farms are located approximately 7.5 km north west of Langholm in Dumfries and Galloway .

SPEN are undertaking consultation at this routeing stage in line with our established approach to routeing, as part of the ongoing engineering and environmental review of potential route options. The outcome of this process is a 'Preferred Route' on which we are seeking comments. The views expressed will be taken into account in establishing a 'Proposed Route' which will be taken forward for further assessment.

Consent for the 'Proposed Route' will be sought under Section 37 (s37) of the Electricity Act 1989.

What will the Proposed Route look like?



Trident Single Pole



Trident 'H' pole



Terminal 'H' pole

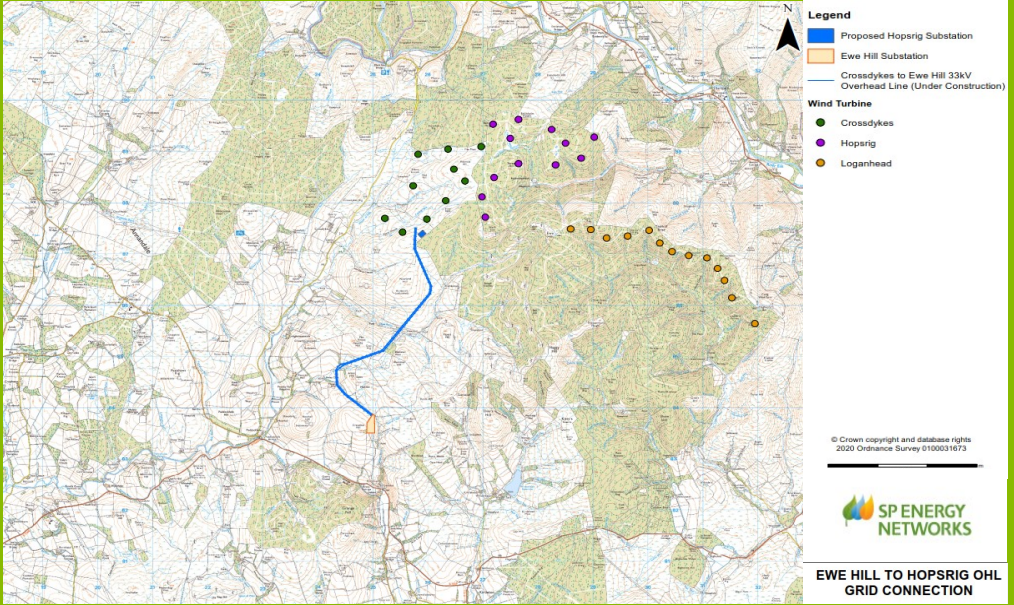
The proposal is for a 132 kV connection to be supported by trident wood poles. Given the study area is mostly above 200m it is anticipated that an H-pole configuration is most likely. Typical heights of the poles are 10m - 22m with an average of 13m. Typical spans for the H-pole configuration are 90-110m

The Preferred Route

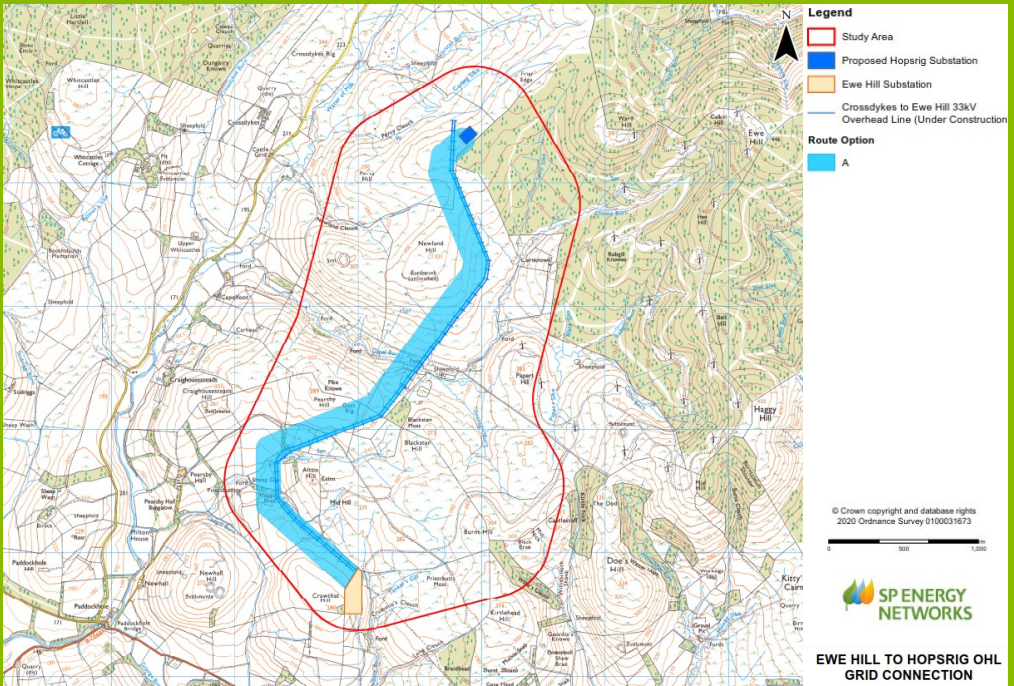
The Preferred Route is the option which is considered technically feasible and economically viable whilst causing the least disturbance to the environment and to people.

The Preferred Route is approximately 4.8km long and runs south-west from the proposed Hopsrig 132kV Collector substation crossing the existing Crossdykes 33kV OHL before turning south and travelling parallel to the Crossdykes OHL toward to the tie-in at Ewe Hill Substation.

The Site Location



The Preferred Route



Consultation

As part of our consultation process we want to give you the opportunity to comment on the Preferred Route.

A Routeing Consultation Report has been prepared providing details of the initial stages of work undertaken to identify a Preferred Route for the grid connection. This has involved a review of environmental features in the wider study area, the identification and appraisal of route options.

The aim of the routeing process is to minimise the environmental impact of the Preferred Route, whilst selecting a route that is technically and economically viable.

A copy of the Routeing Consultation Report is available to download on the SPEN website at:
http://spenergynetworks.co.uk/pages/hopsrig_collector_substation_grid_connection.aspx

Due to recent COVID-19 legislation, face-to-face consultation is unfortunately not possible at present and may not be permitted for the foreseeable future. SPEN is committed to undertaking meaningful and wide-reaching consultation and is therefore currently planning on holding several live and interactive web-based consultation events allowing members of the community to attend a live question and answer sessions. These events will be held on **17th and 18th June 2020** during business hours. A registration link can be found on the SP Energy Networks Community Consultation Page noted above. If you prefer to use your phone, you must select "Use Telephone" after joining the webinar and call in using the numbers at the time of registration.

If you have any comments on the Preferred Route you can do so by contacting us using the following details by the **3rd July 2020**.

Email: hopsriggc@spenergynetworks.co.uk

Phone number: **07516 461129**

Please note that any comments made during this Consultation Stage are not representations to The Scottish Government Energy Consents and Deployment Unit, who will determine any subsequent application for consent. Following the submission of the Section 37 Application, interested parties will have the opportunity to make representations to the Scottish Government on these proposals.



Proposed Ewe Hill to Hopsrig 132kv Overhead

Line Grid Connection



Consultation Leaflet

