

Dersalloch Newsletter

Issue No 01



About our Client

SP Energy Networks is part of the ScottishPower Group of companies, ScottishPower is part of the Iberdrola Group, one of the largest global energy companies focused on delivering a sustainable, greener energy future. SP Energy Networks is responsible for delivering energy to business and communities through their Transmission and Distribution Network of cables and power lines. Electricity is produced from a variety of sources including power stations and windfarms. SP Energy Networks ensure the power is safely and reliably delivered around the country to end users. Another important part of the business is providing connections to the Network, such as Dersalloch Windfarm.

ABOUT US

The KTL group is recognised as a leading provider of engineering services to the telecommunications and utility sectors, working primarily with mobile network operators, electricity network operators and major equipment vendors. The group has grown significantly over the last 15 years and has operations in Ireland, the UK and a number of other European countries.

KTL provides a full range of engineering services to mobile network operators, from network design, planning and optimisation through to radio access network installation and commissioning. KTL also provide programme management and full turnkey network rollout as required.

KTL has a full range of civil, structural and electrical engineering resources that can provide comprehensive solutions for major electrical infrastructure projects, including substation, underground cables, overhead lines and wind farm balance of plant projects.

The SP Energy Networks Website contains further information regarding business and projects.
www.spenergynetworks.co.uk/pages/investment_scotland.asp

PROJECT NAME: Dersalloch Wind Farm 132kV OHL Connection

PROJECT OVERVIEW

KTL was recently awarded a project to design and construct an Overhead Line for Dersalloch Wind Farm in South Ayrshire as part of the SWS (South West Scotland) Connections Project for SP Energy Networks.

Site Start Date: March 2016

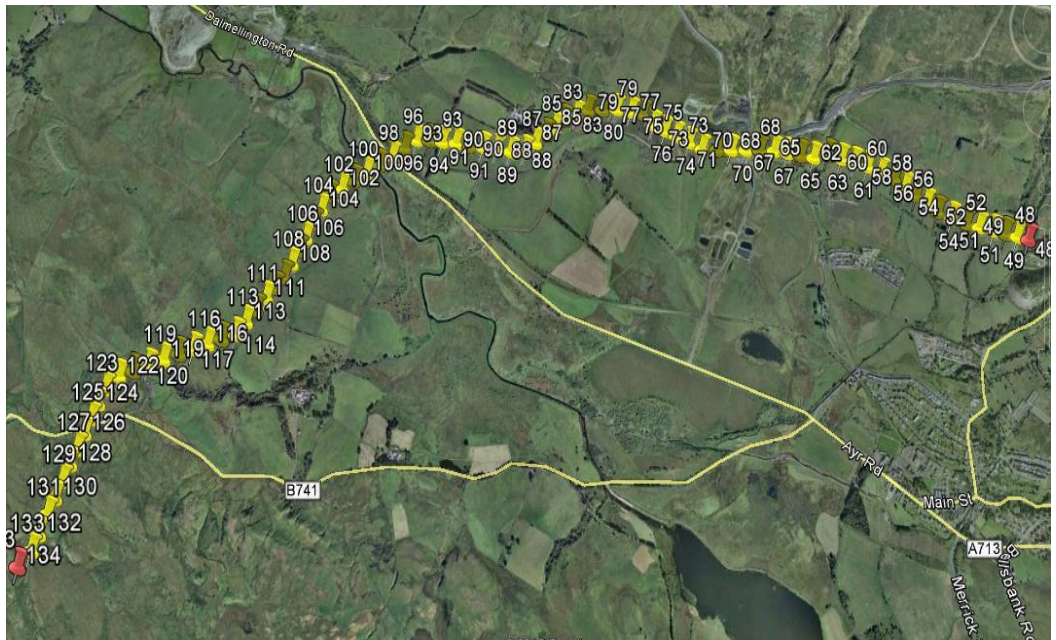
Contract Duration: 6 months

PROJECT DETAILS

The project is to Design & Construct an overhead line that forms part of the new 6.2km 132kV Single Circuit, 4 Wire Heavy Duty Wood Pole overhead line between the new 275/132kV substation at New Cumnock and the new proposed 132kV Windfarm substation at Dersalloch.

The project location will start at Penneyvennie Farm crossing the A713 and the river Doon before heading up towards Dersalloch Wind Farm.

OHL Route



Site office

Our site office can be accessed via the A713 and the B741 going left towards Burnton. A KTL sign post will be in place to show the entrance.

Should you have any questions or concerns please contact Richard on the details below



Richard Reid
Project Manager

Email: Richard.reid@ktleurope.com

DERSALLOCH 132KV OHL

Dersalloch 132KV
OHL comprises
of the following:

Steel assembly
Excavations Pole
Installation
Reinstatement
Stringing
Commissioning

CONTACT US

KTL SITE OFFICE
HARGREAVES
BURNTON
DALMELLINGTON
AYR
KA6 7PU