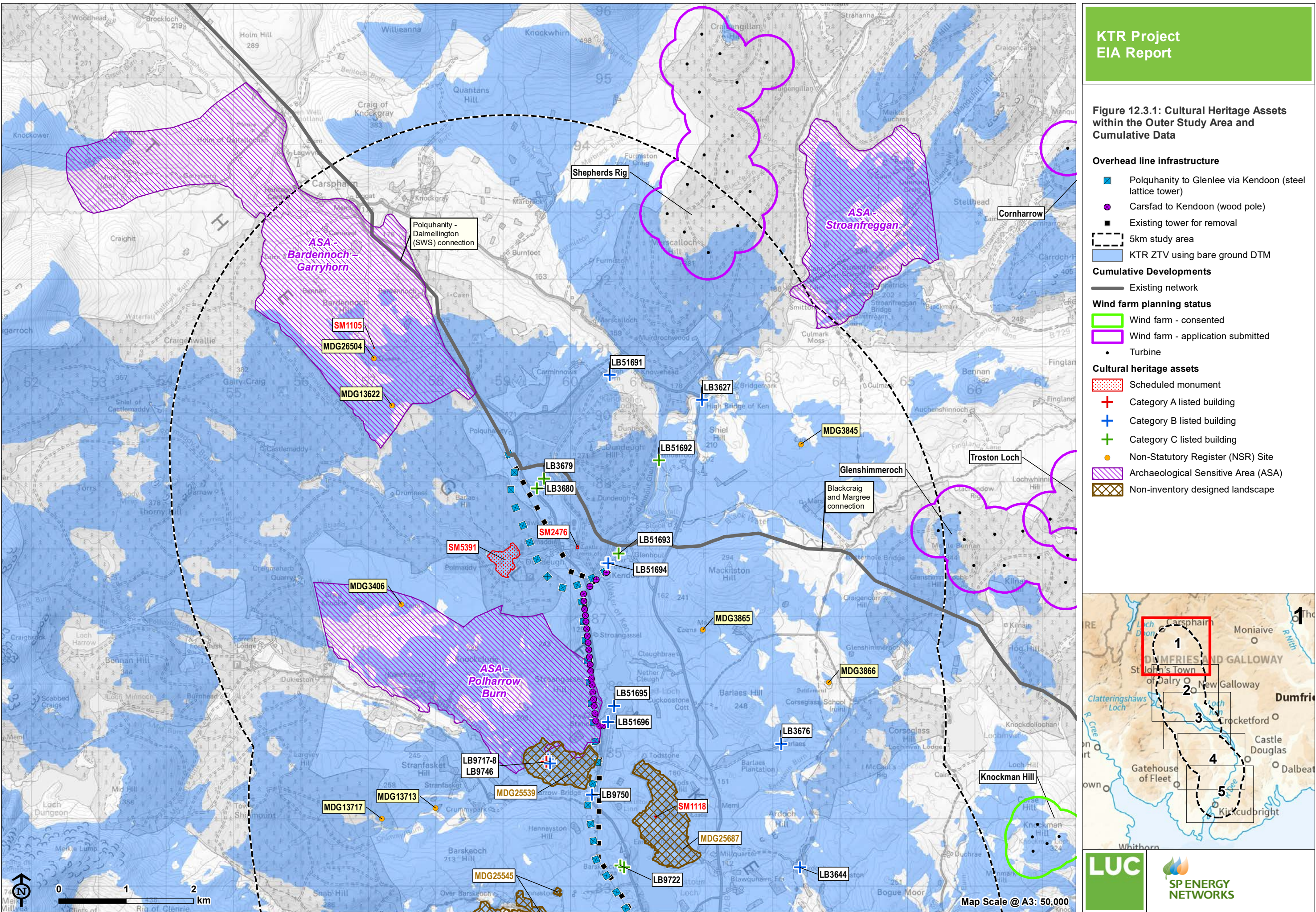
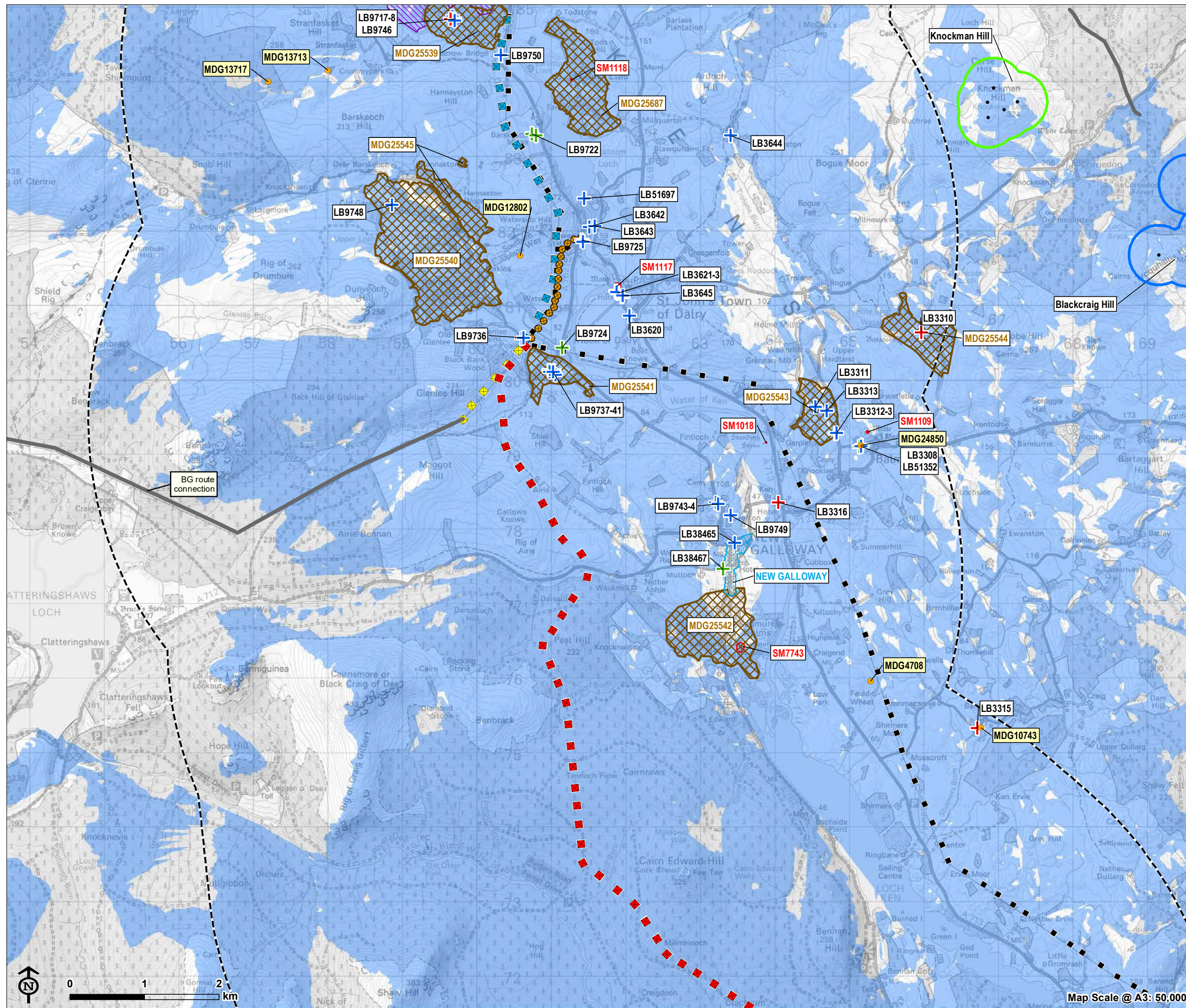


KTR Project
EIA Report

Figure 12.3.1: Cultural Heritage Assets within the Outer Study Area and Cumulative Data





KTR Project EIA Report

Figure 12.3.2: Cultural Heritage Assets within the Outer Study Area and Cumulative Data

- Overhead line infrastructure**
- Polquhanity to Glenlee via Kendon (steel lattice tower)
 - Earlstoun to Glenlee (wood pole)
 - Glenlee to Tongland (steel lattice tower)
 - BG route deviation (steel lattice tower)
 - Existing tower for removal
- Cumulative Developments**
- Existing network
- Wind farm planning status**
- Wind farm - operational
 - Wind farm - consented
 - Turbine
- Cultural heritage assets**
- Scheduled monument
 - Category A listed building
 - Category B listed building
 - Category C listed building
 - Non-Statutory Register (NSR) Site
 - Conservation area
 - Archaeological Sensitive Area (ASA)
 - Non-inventory designed landscape

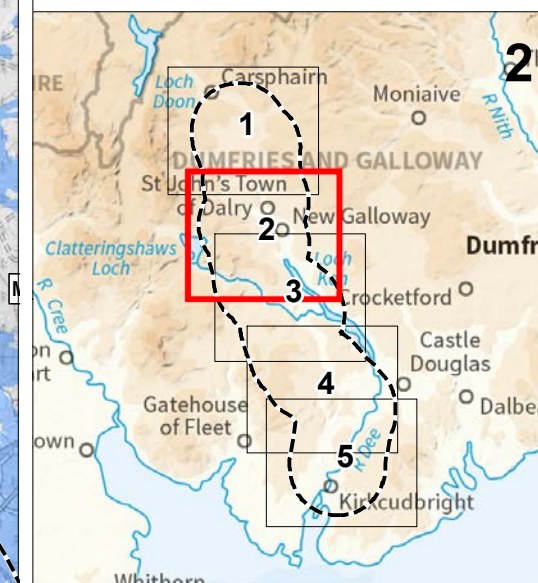


Figure 12.3.4: Cultural Heritage Assets within the Outer Study Area and Cumulative Data

Overhead line infrastructure

- Glenlee to Tongland (steel lattice tower)
- Existing tower for removal
- 5km study area
- KTR ZTV using bare ground DTM

Cumulative Developments

- Existing network

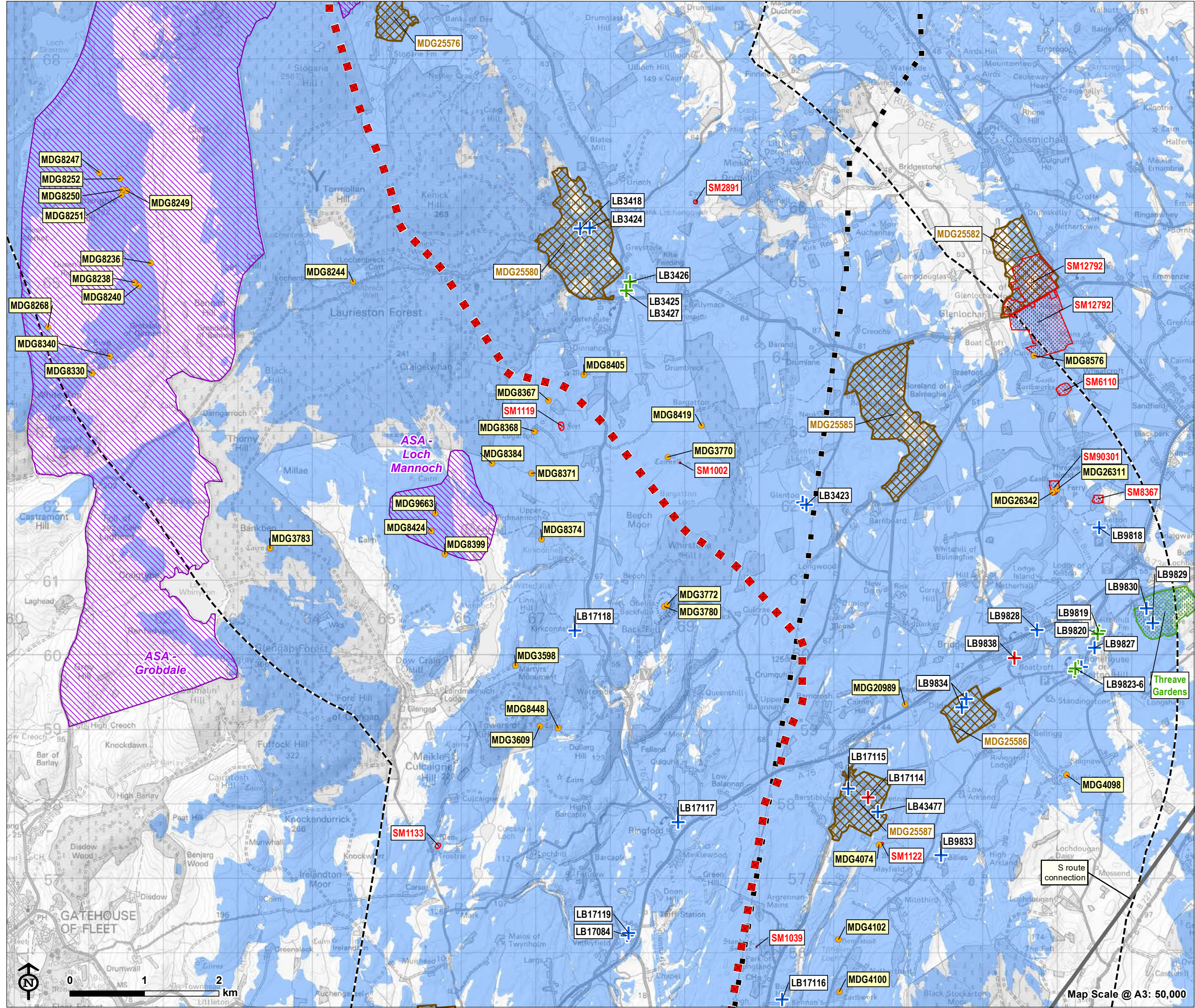
Cultural heritage assets

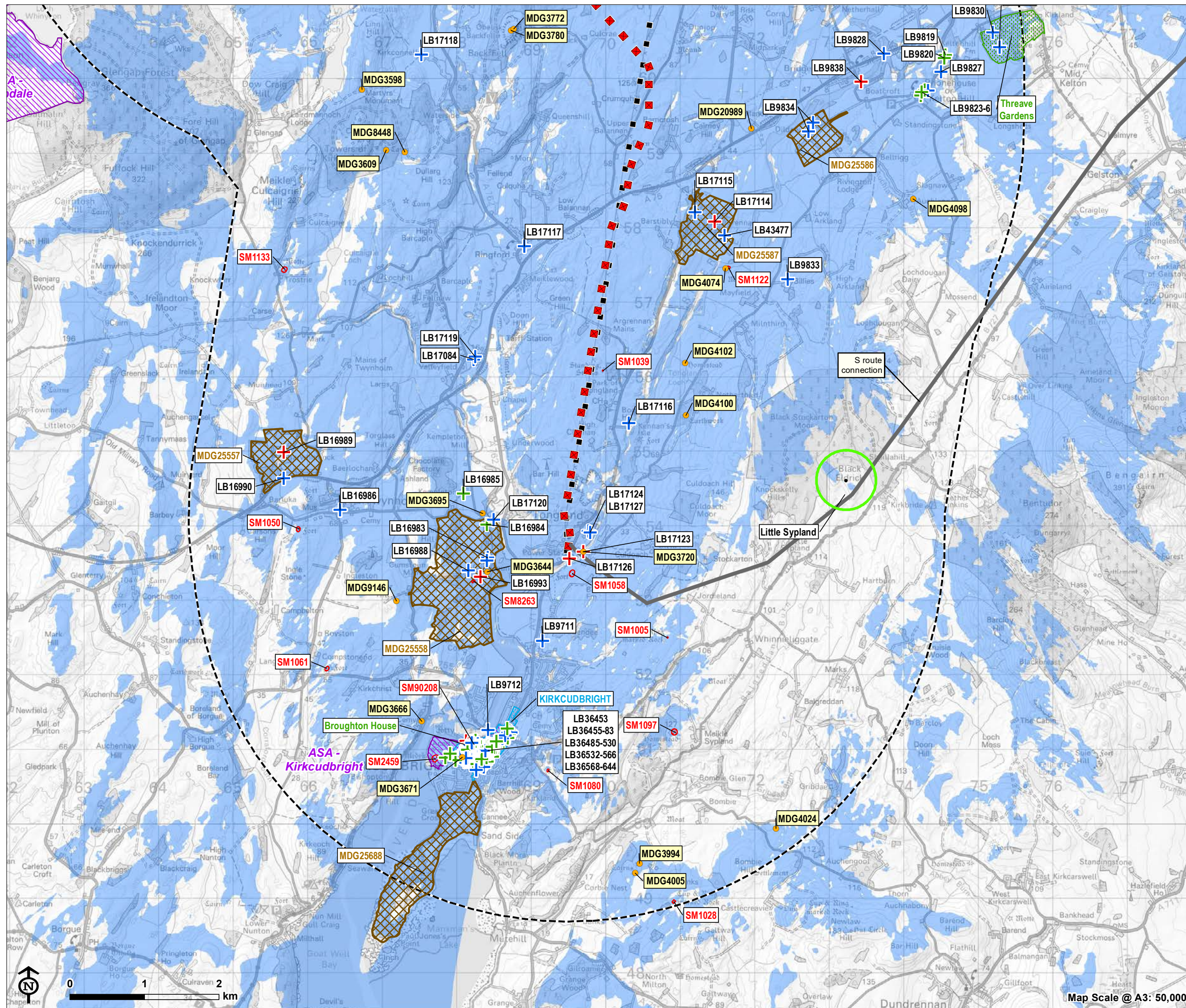
- Scheduled monument
- + Category A listed building
- + Category B listed building
- + Category C listed building
- Non-Statutory Register (NSR) Site
- Inventory landscape and designed landscape
- Archaeological Sensitive Area
- Non-inventory designed landscape



LUC

SP ENERGY NETWORKS





KTR Project EIA Report

Figure 12.3.5: Cultural Heritage Assets within the Outer Study Area and Cumulative Data

- Overhead line infrastructure**
- Glenlee to Tongland (steel lattice tower)
 - Existing tower for removal
 - 5km study area
 - KTR ZTV using bare ground DTM
- Cumulative Developments**
- Existing network
- Wind farm planning status**
- Wind farm - consented
 - Turbine
- Cultural heritage assets**
- Scheduled monument
 - ✚ Category A listed building
 - ✚ Category B listed building
 - ✚ Category C listed building
 - Non-Statutory Register (NSR) Site
 - Inventory landscape and designed landscape
 - Conservation area
 - Archaeological Sensitive Area
 - Non-inventory designed landscape

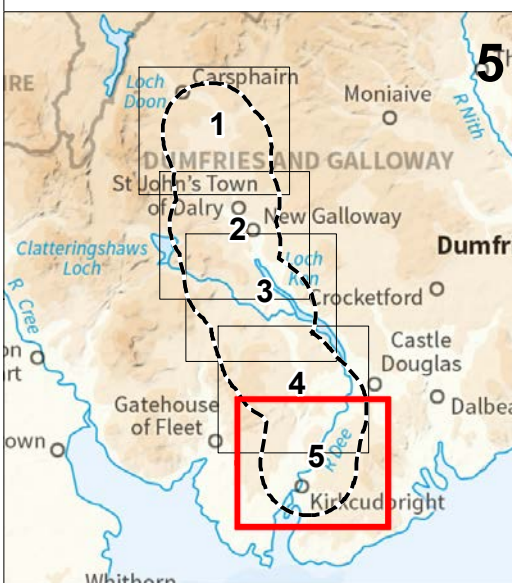
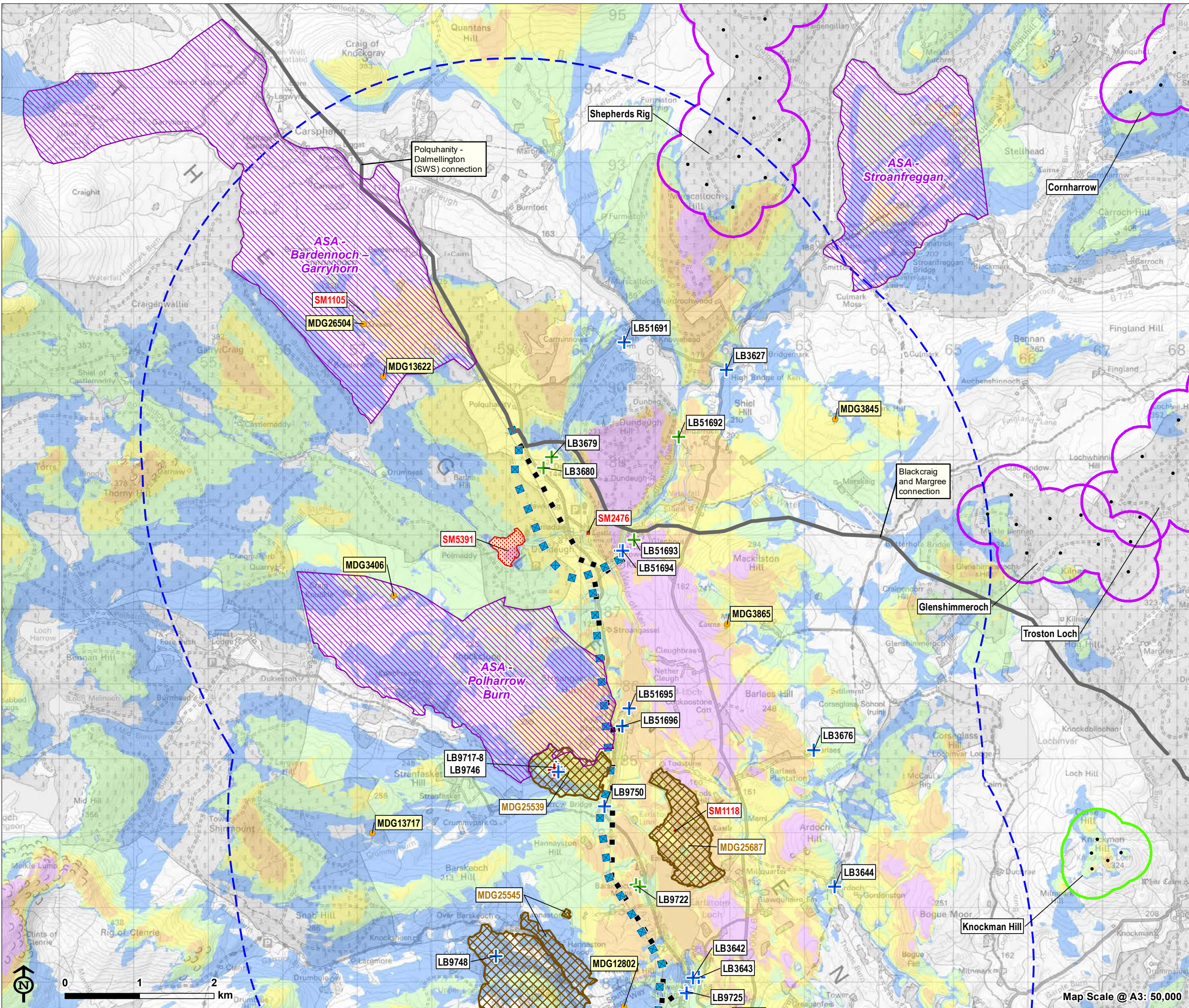
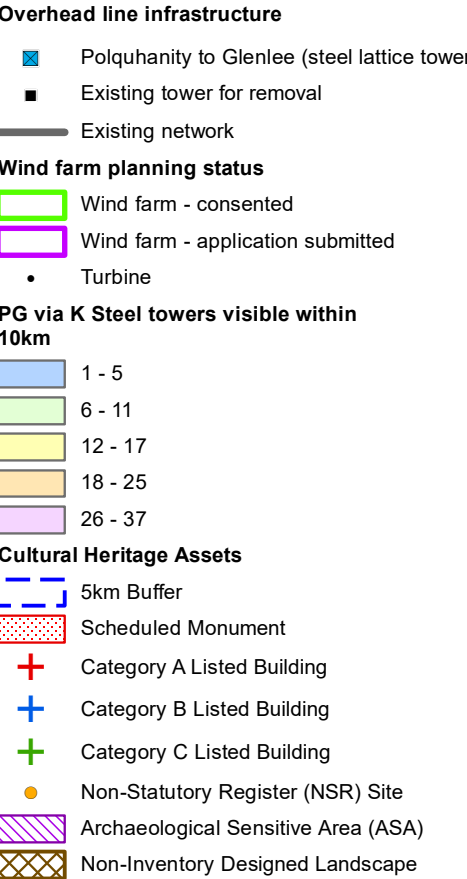
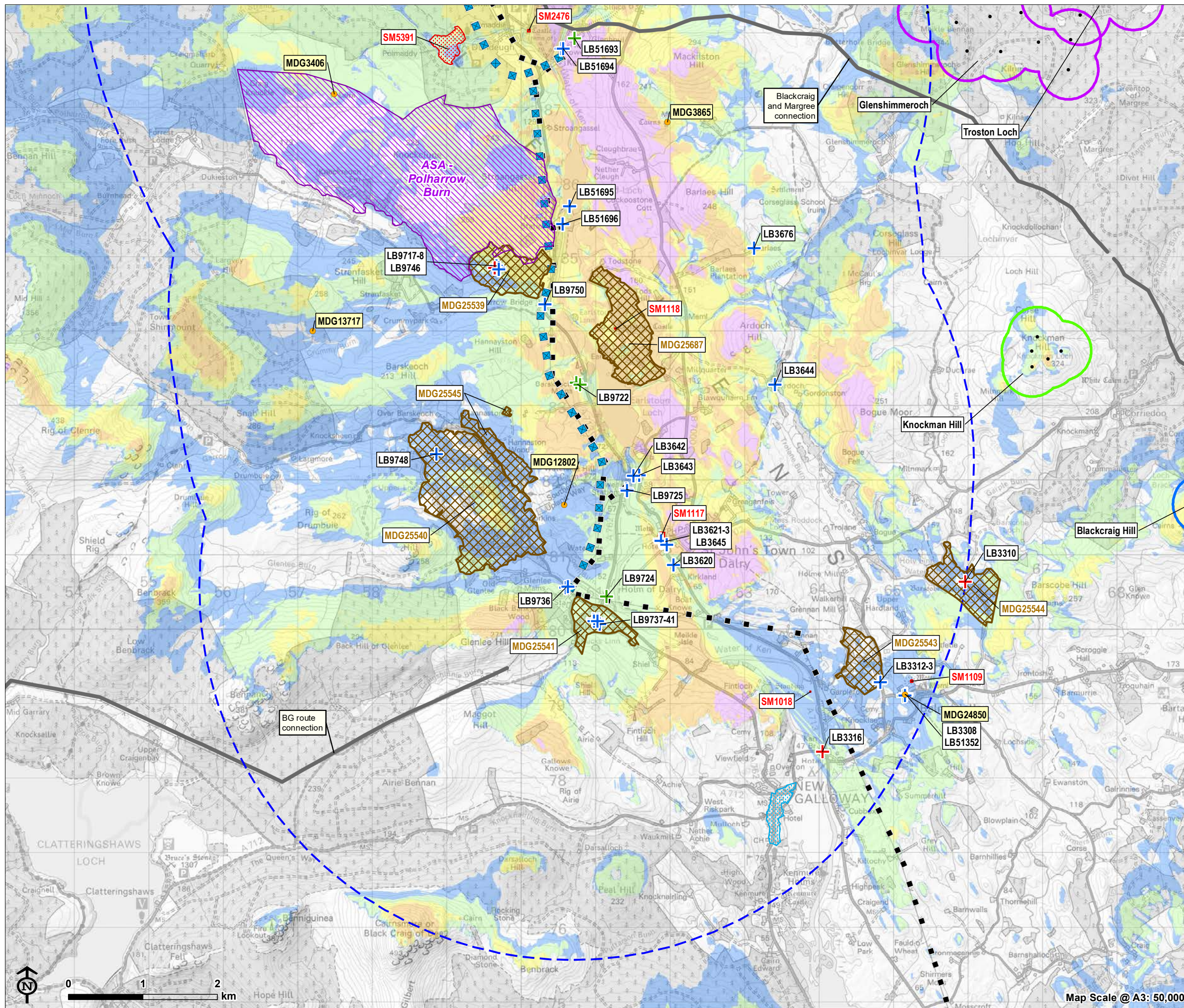


Figure 12.4.1: Polquhanity to Glenlee (P-G) Zone of Theoretical Visibility and Cultural Heritage Assets within the Outer Study Area





KTR Project EIA Report

Figure 12.4.2: Polquhanny to Glenlee (P-G) Zone of Theoretical Visibility and Cultural Heritage Assets within the Outer Study Area

Overhead line infrastructure

- Polquhanny to Glenlee (steel lattice tower)
- Existing tower for removal
- Existing network

Wind farm planning status

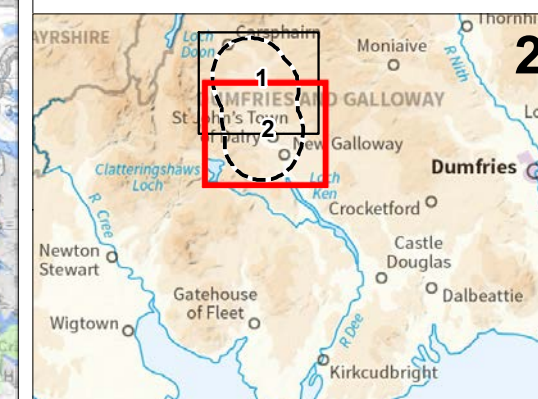
- Wind farm - operational
- Wind farm - consented
- Wind farm - application submitted
- Turbine

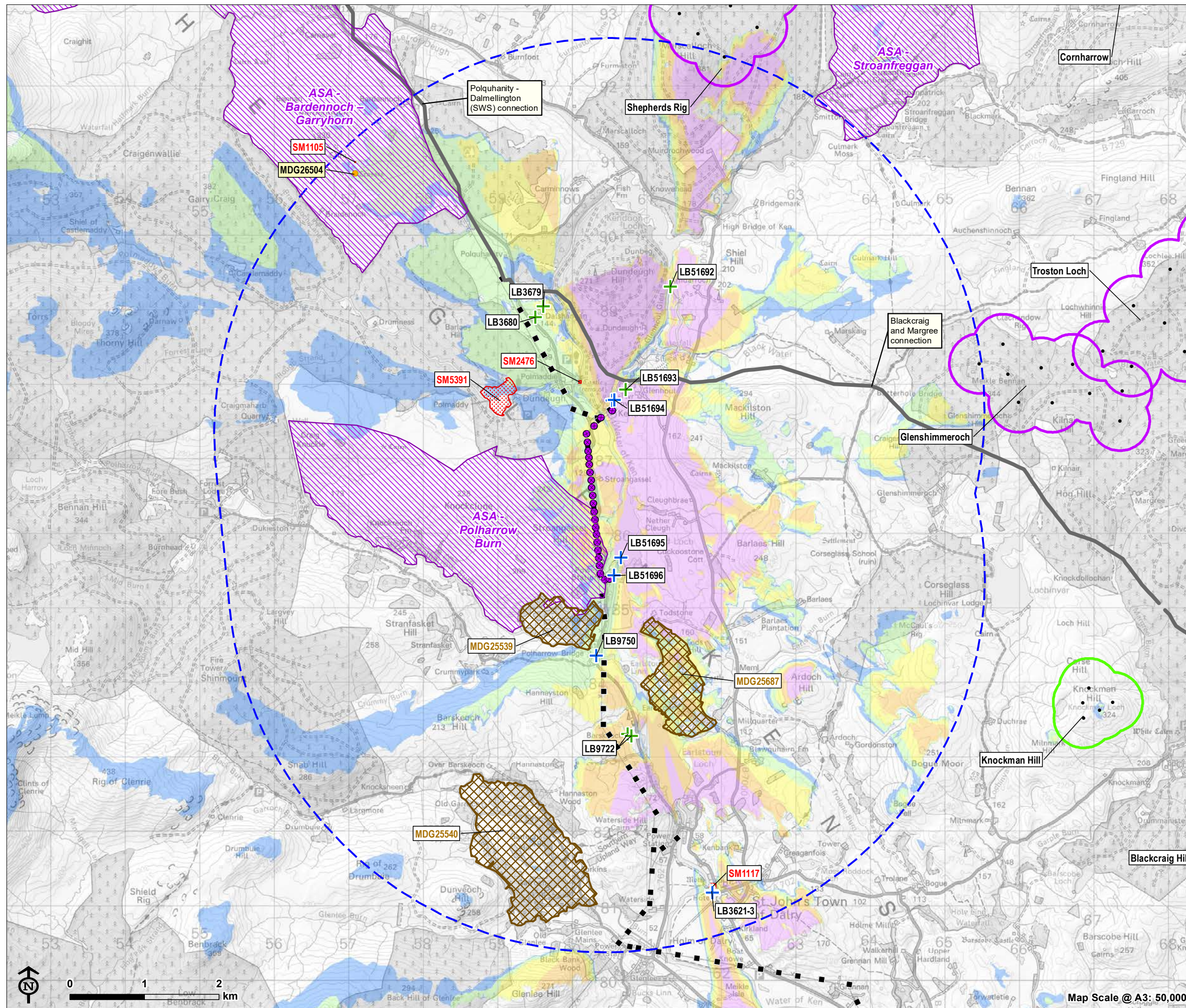
PG via K Steel towers visible within 10km

- 1 - 5
- 6 - 11
- 12 - 17
- 18 - 25
- 26 - 37

Cultural Heritage Assets

- 5km Buffer
- Scheduled Monument
- Category A Listed Building
- Category B Listed Building
- Category C Listed Building
- Non-Statutory Register (NSR) Site
- Archaeological Sensitive Area
- Conservation Area
- Non-Inventory Designed Landscape





KTR Project EIA Report

**Figure 12.5.1: Carsfad to Kendoon (C-K)
Zone of Theoretical Visibility and Cultural
Heritage Assets within the Outer Study
Area**

Overhead line infrastructure

- Carsfad to Kendoon (wood pole)
- Existing tower for removal
- Existing network

Wind farm planning status

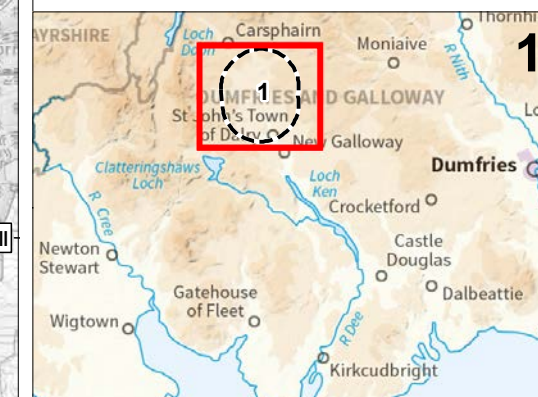
- Wind farm - consented
- Wind farm - application submitted
- Turbine

C-K Wood poles visible within 10km

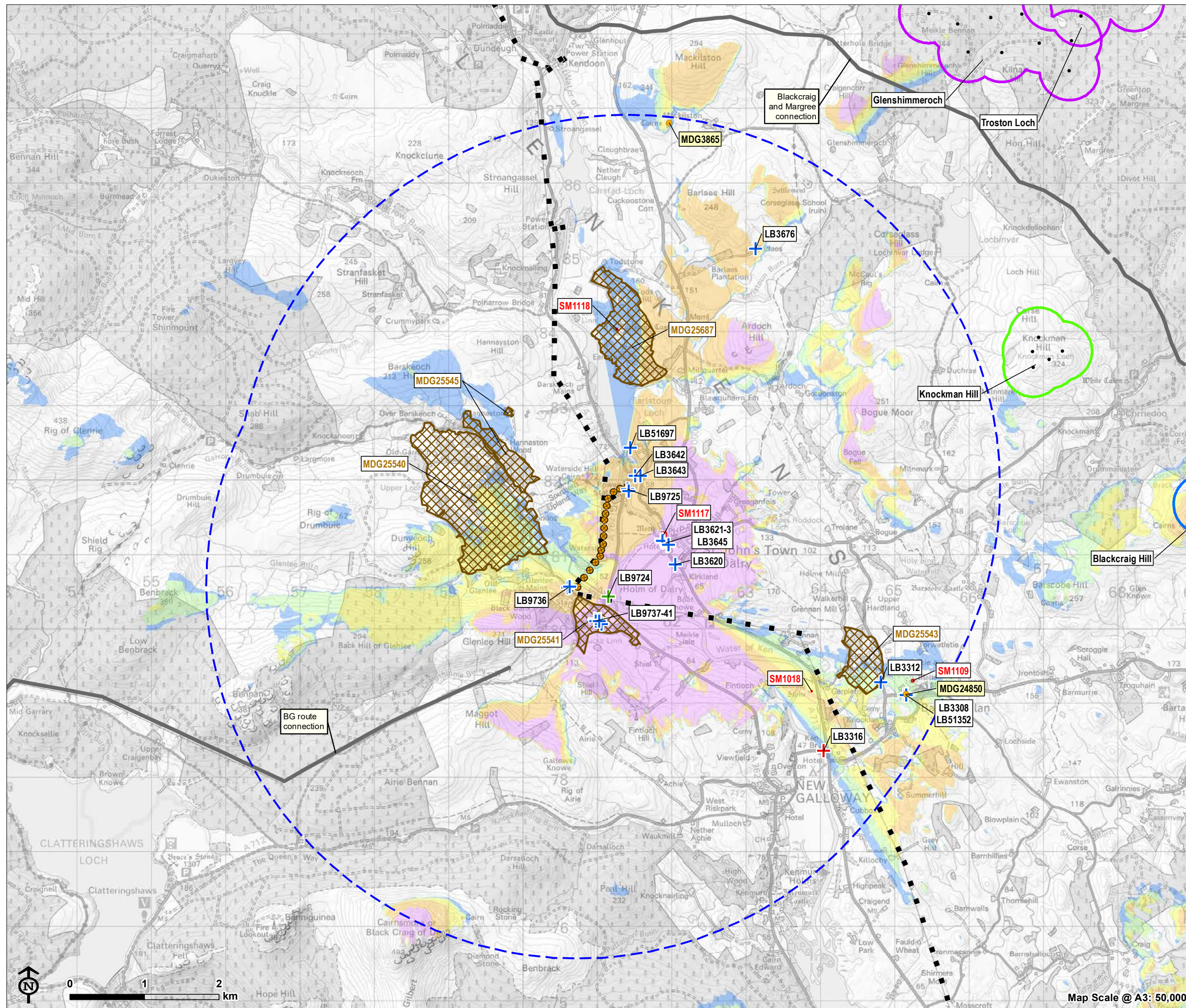
- 1 - 3
- 4 - 8
- 9 - 13
- 14 - 19
- 20 - 24

Cultural Heritage Assets

- 5km Buffer
- Category B Listed Building
- Category C Listed Building
- Non-Statutory Register (NSR) Site
- Scheduled Monument
- Non-Inventory Designed Landscape
- Archaeological Sensitive Area



Map Scale @ A3: 50,000



KTR Project EIA Report

**Figure 12.6.1: Earlstoun to Glenlee (E-G)
Zone of Theoretical Visibility and Cultural
Heritage Assets within the Outer Study
Area**

Overhead line infrastructure

- Earlstoun to Glenlee (wood)
- Existing tower for removal
- Existing network

Wind farm planning status

- Wind farm - operational
- Wind farm - consented
- Wind farm - application submitted
- Turbine

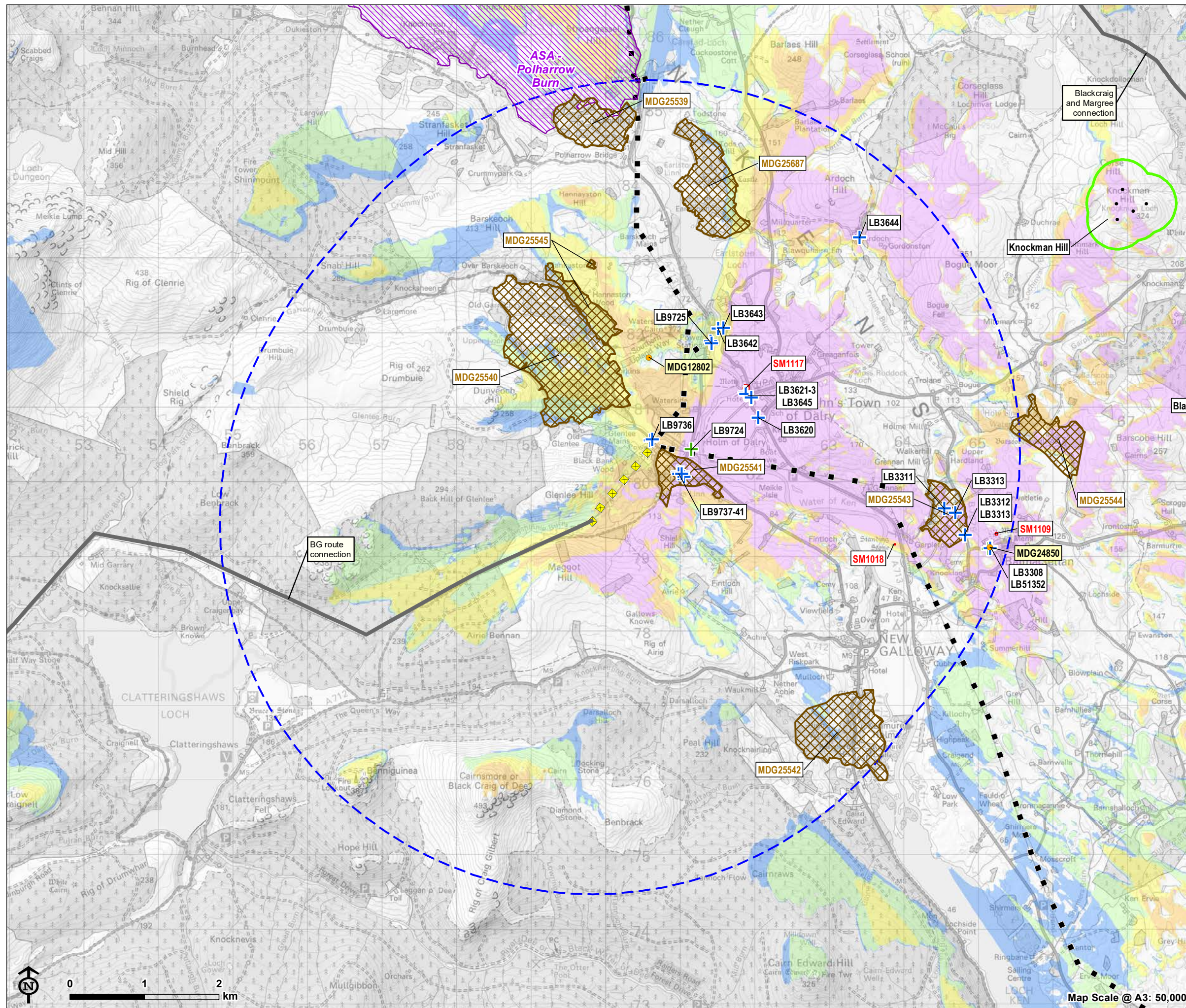
E-G Wood poles visible within 10km

- 1 - 3
- 4 - 7
- 8 - 12
- 13 - 16
- 17 - 19

Cultural Heritage Assets

- 5km Buffer
- Scheduled Monument
- Category A Listed Building
- Category B Listed Building
- Category C Listed Building
- Non-Statutory Register (NSR) Site
- Non-Inventory Designed Landscape





KTR Project EIA Report

**Figure 12.7.1: BG Route Deviation (B-G)
Zone of Theoretical Visibility and Cultural
Heritage Assets within the Outer Study
Area**

Overhead line infrastructure

- ✕ BG route deviation (steel lattice tower)
- Existing tower for removal
- Existing network

Wind farm planning status

- Wind farm - consented
- Turbine

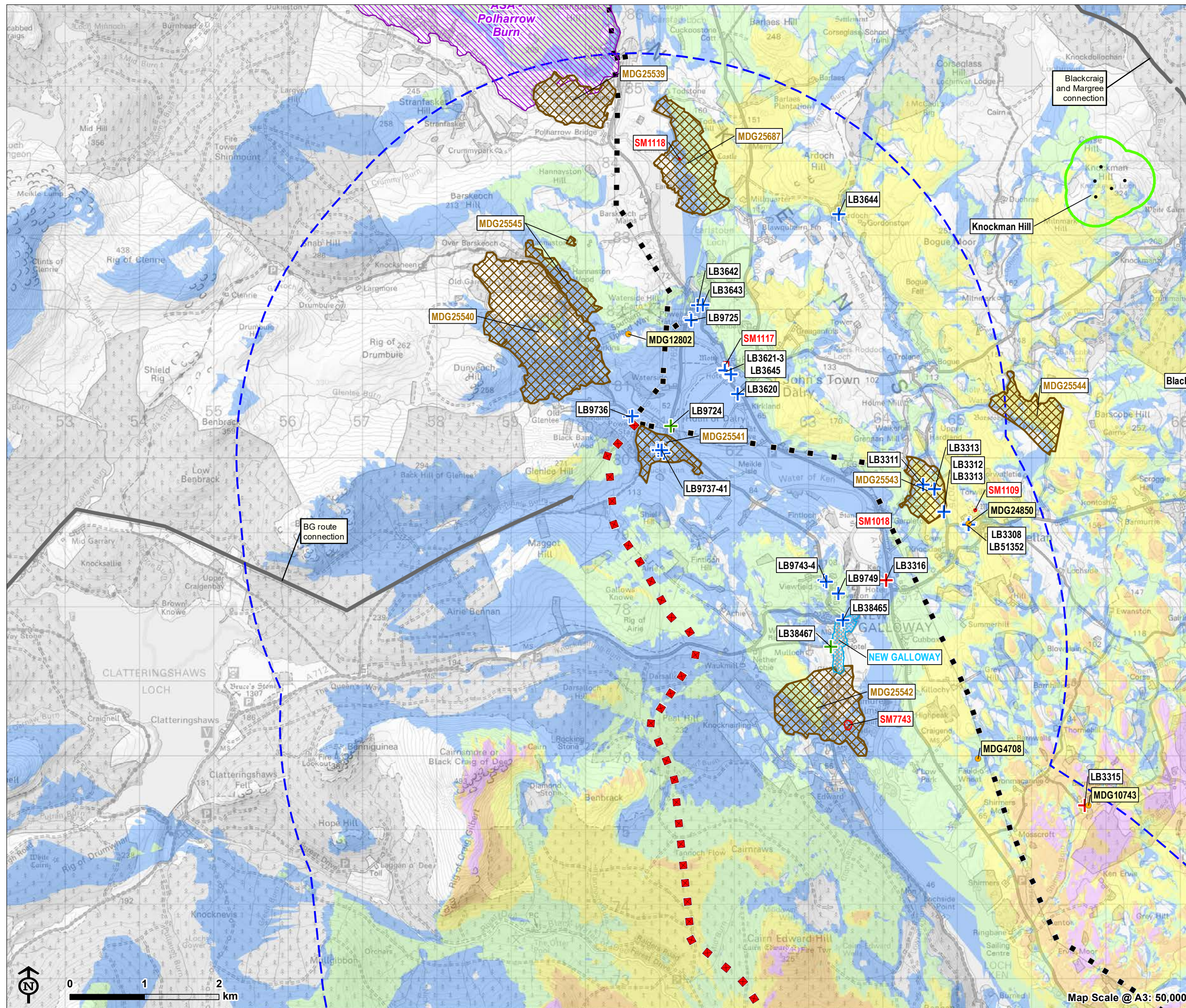
B-G Steel towers visible within 10km

- 1
- 2
- 3
- 4
- 5 - 6

Cultural Heritage Assets

- 5km Buffer
- ▤ Scheduled Monument
- + Category B Listed Building
- + Category C Listed Building
- Non-Statutory Register (NSR) Site
- ▤ Non-Inventory Designed Landscape
- ▤ Archaeological Sensitive Area





KTR Project EIA Report

**Figure 12.8.1: Glenlee to Tongland (G-T)
Zone of Theoretical Visibility and Cultural
Heritage Assets within the Outer Study
Area**

Overhead line infrastructure

- Glenlee to Tongland (steel lattice tower)
- Existing tower for removal
- Existing network

Wind farm planning status

- Wind farm - consented
- Turbine

G-T Steel towers visible within 10km

- 1 - 8
- 9 - 16
- 17 - 25
- 26 - 36
- 37 - 81

Cultural Heritage Assets

- 5km Buffer
- Scheduled Monument
- + Category A Listed Building
- + Category B Listed Building
- + Category C Listed Building
- Non-Statutory Register (NSR) Site
- Conservation Area
- Non-Inventory Designed Landscape
- Archaeological Sensitive Area (ASA)

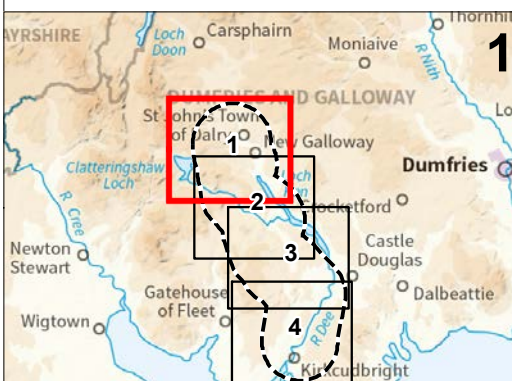
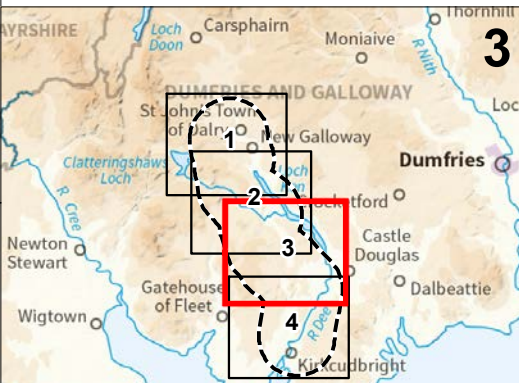
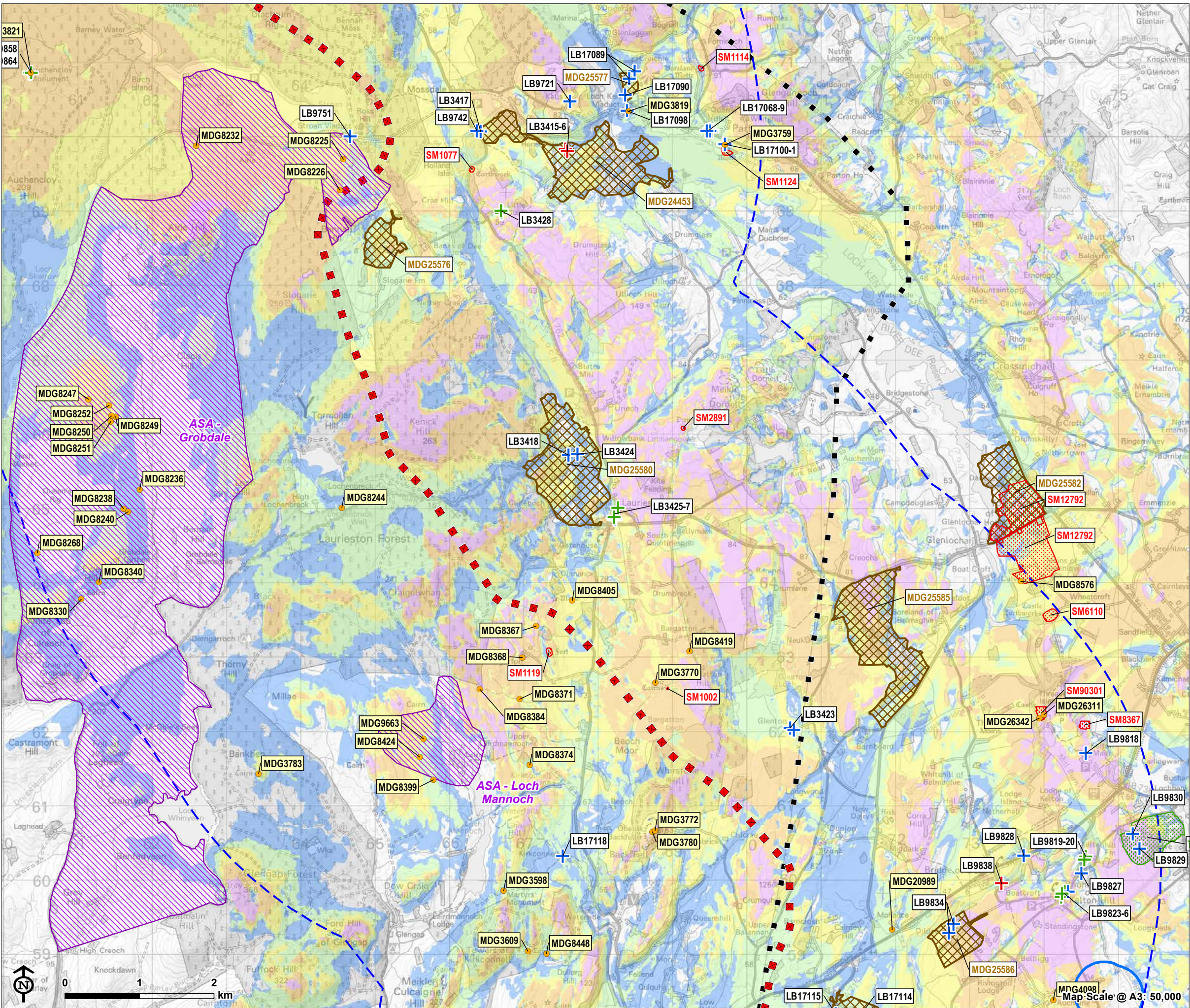
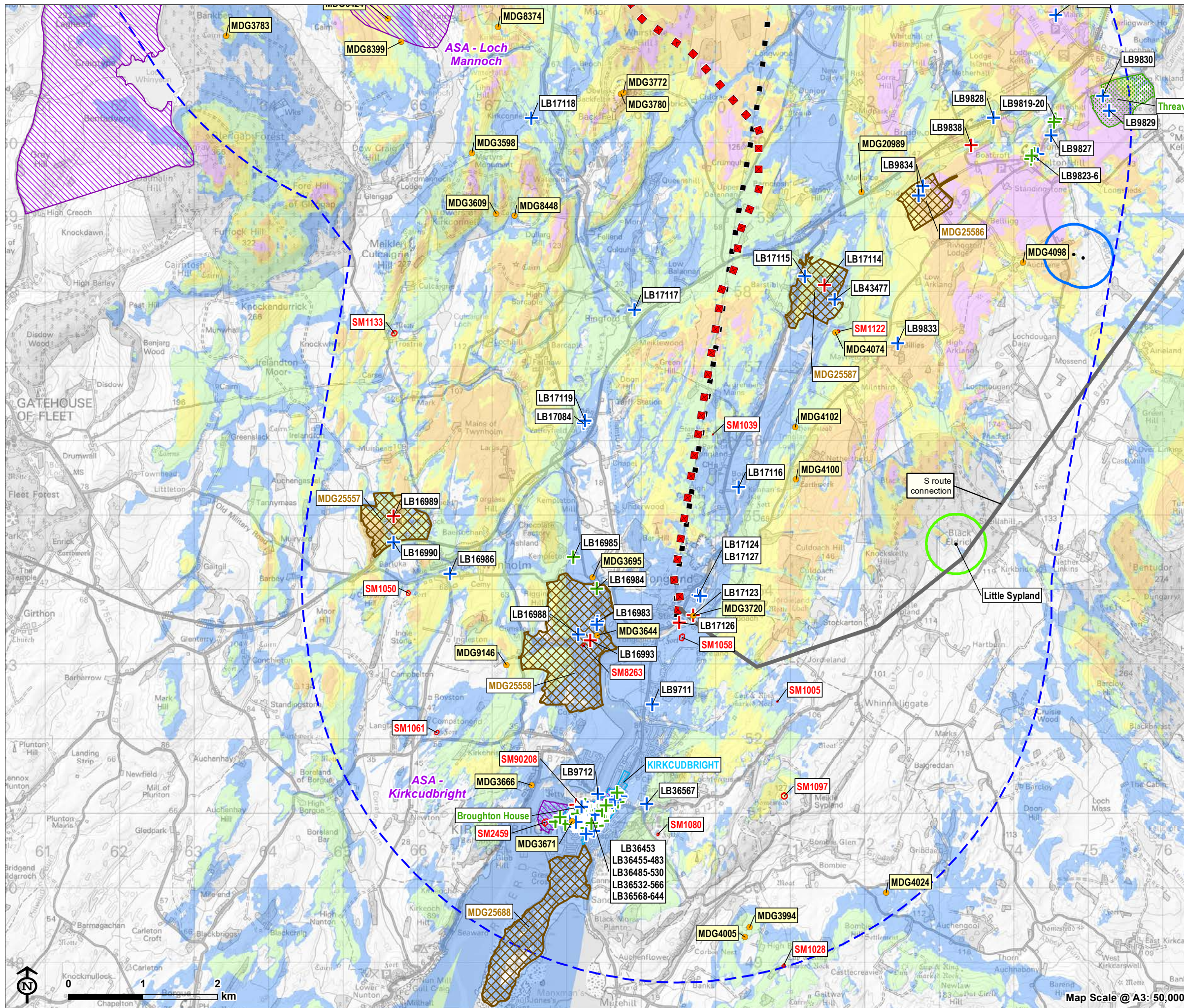


Figure 12.8.3: Glenlee to Tongland (G-T)
Zone of Theoretical Visibility and Cultural
Heritage Assets within the Outer Study
Area

- Overhead line infrastructure**
- Glenlee to Tongland (steel lattice tower)
 - Existing tower for removal
- Wind farm planning status**
- Wind farm - operational
 - Turbine
- G-T Steel towers visible within 10km**
- 1 - 8
 - 9 - 16
 - 17 - 25
 - 26 - 36
 - 37 - 81
- Cultural Heritage Assets**
- 5km Buffer
 - Scheduled Monument
 - Category A Listed Building
 - Category B Listed Building
 - Category C Listed Building
 - Non-Statutory Register (NSR) Site
 - Inventory Garden and Designed Landscape
 - Non-Inventory Designed Landscape
 - Archaeological Sensitive Area (ASA)





KTR Project EIA Report

**Figure 12.8.4: Glenlee to Tongland (G-T)
Zone of Theoretical Visibility and Cultural
Heritage Assets within the Outer Study
Area**

