

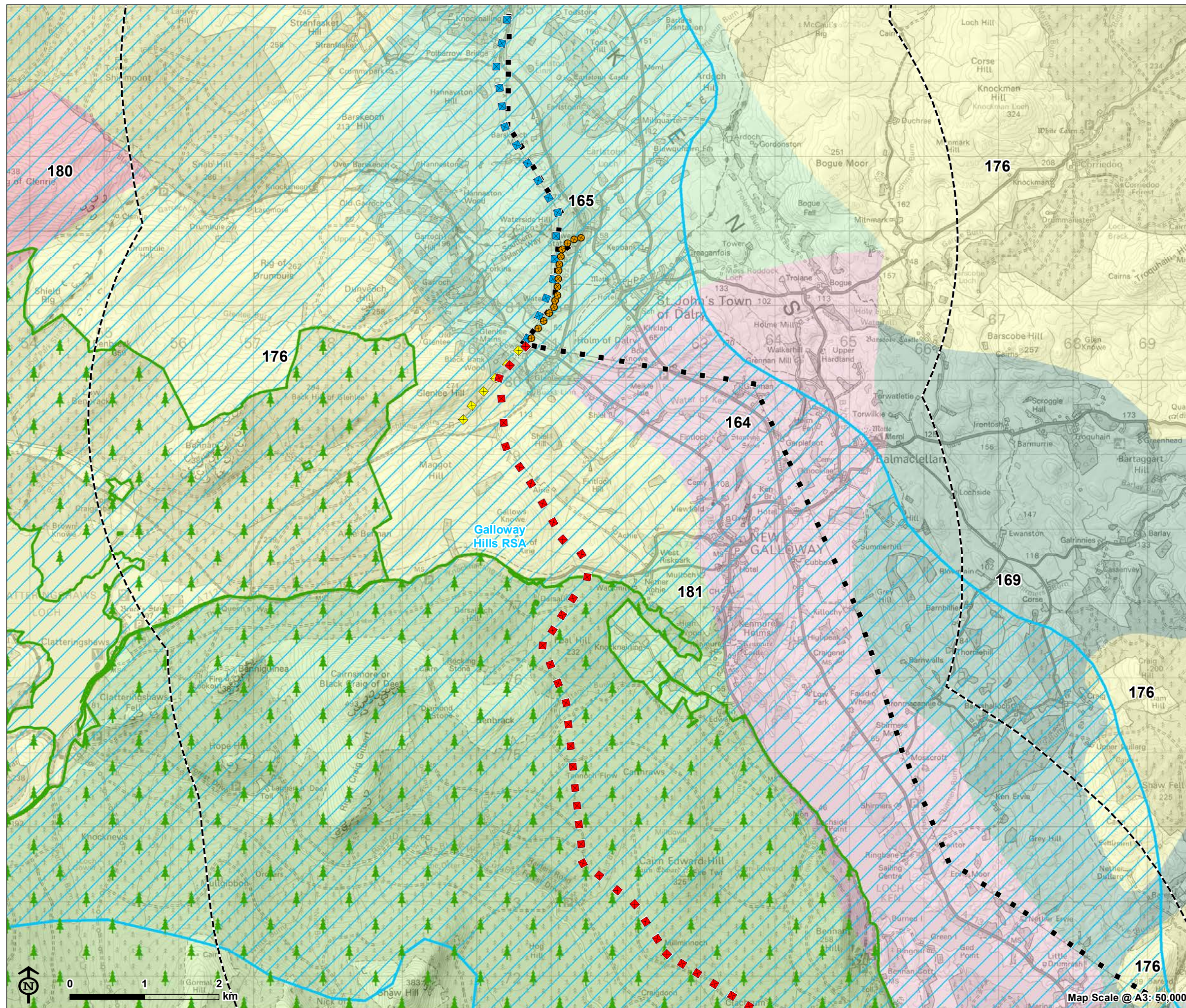
KTR Project EIA Report

Figure 7.6: Designated Landscapes and Protected Areas

- Polquharity sealing end and terminal tower
- Substation and hydro electricity generating station
- Polquharity to Glenlee via Kendoon
- Carsfad to Kendoon
- Earlstoun to Glenlee
- BG route deviation
- Glenlee to Tongland
- Existing 132kV overhead line to be removed (following construction of the KTR Project)
- Existing network
- 5km radius study area from KTR connections
- Designated Landscapes**
 - National Scenic Area
 - Regional Scenic Area
- Protected Areas**
 - Wildland Scotland
 - Galloway Forest Park
 - Galloway Forest Dark Sky Park
- Galloway and South Ayrshire Biosphere**
 - Core area zone
 - Buffer zone
 - Transition area zone

Note: See Appendix 7.2 for detailed notes on data and information contained on figure.



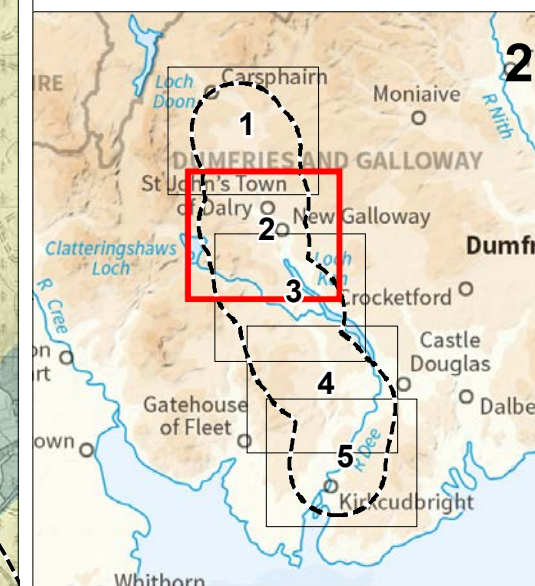


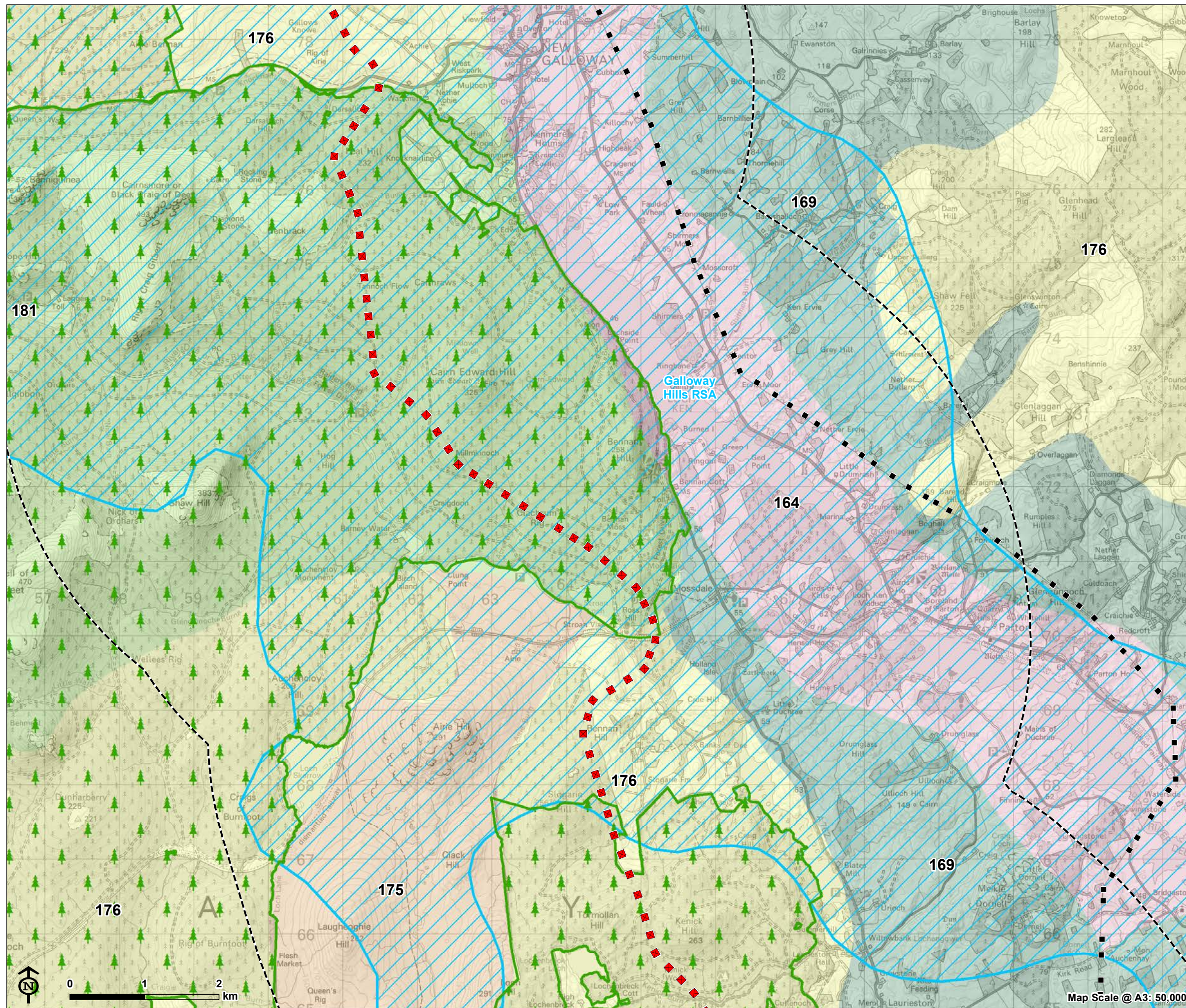
KTR Project EIA Report

Figure 7.7.2: Landscape Character Types (LCTs) and Designated Landscapes

- Overhead line infrastructure**
- Polquhany to Glenlee via Kendoon (steel lattice tower)
 - Earlstoun to Glenlee (wood pole)
 - Glenlee to Tongland (steel lattice tower)
 - BG route re-alignment (steel lattice tower)
 - Existing tower for removal
- 5km radius study area from KTR connections
- 2019 SNH landscape character types**
- 164. Flooded Valley
 - 165. Upper Dale - Dumfries & Galloway
 - 169. Drumlin Pastures
 - 176. Foothills with Forest - Dumfries & Galloway
 - 180. Rugged Uplands - Dumfries & Galloway
 - 181. Rugged Uplands with Forest - Dumfries & Galloway
- Designated Landscapes**
- Regional Scenic Area
- Protected Areas**
- Galloway Forest Park

Note: See Appendix 7.2 for detailed notes on data and information contained on figure.





KTR Project EIA Report

Figure 7.7.3: Landscape Character Types (LCTs) and Designated Landscapes

Overhead line infrastructure

- Glenlee to Tongland (steel lattice tower)
- Existing tower for removal
- 5km radius study area from KTR connections

2019 SNH landscape character types

- 164. Flooded Valley
- 169. Drumlin Pastures
- 175. Foothills - Dumfries & Galloway
- 176. Foothills with Forest - Dumfries & Galloway
- 181. Rugged Uplands with Forest - Dumfries & Galloway

Designated Landscapes

- Regional Scenic Area

Protected Areas

- Galloway Forest Park

Note: See Appendix 7.2 for detailed notes on data and information contained on figure.

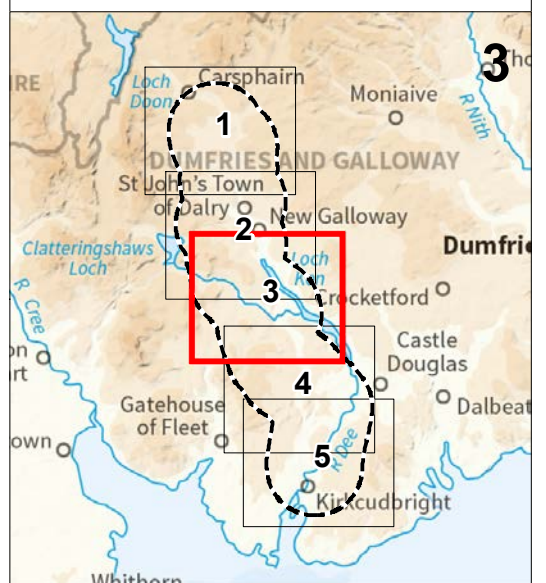
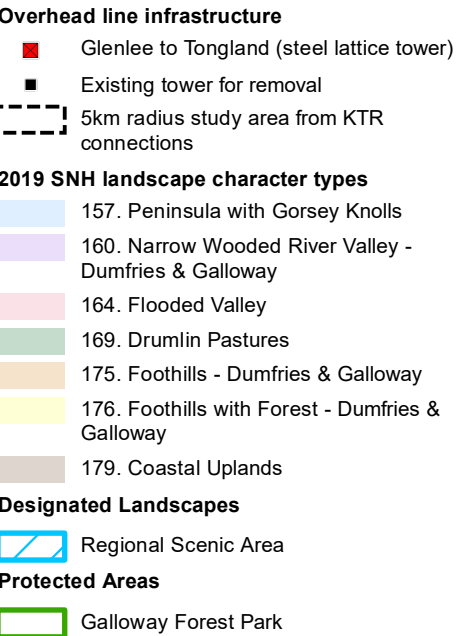
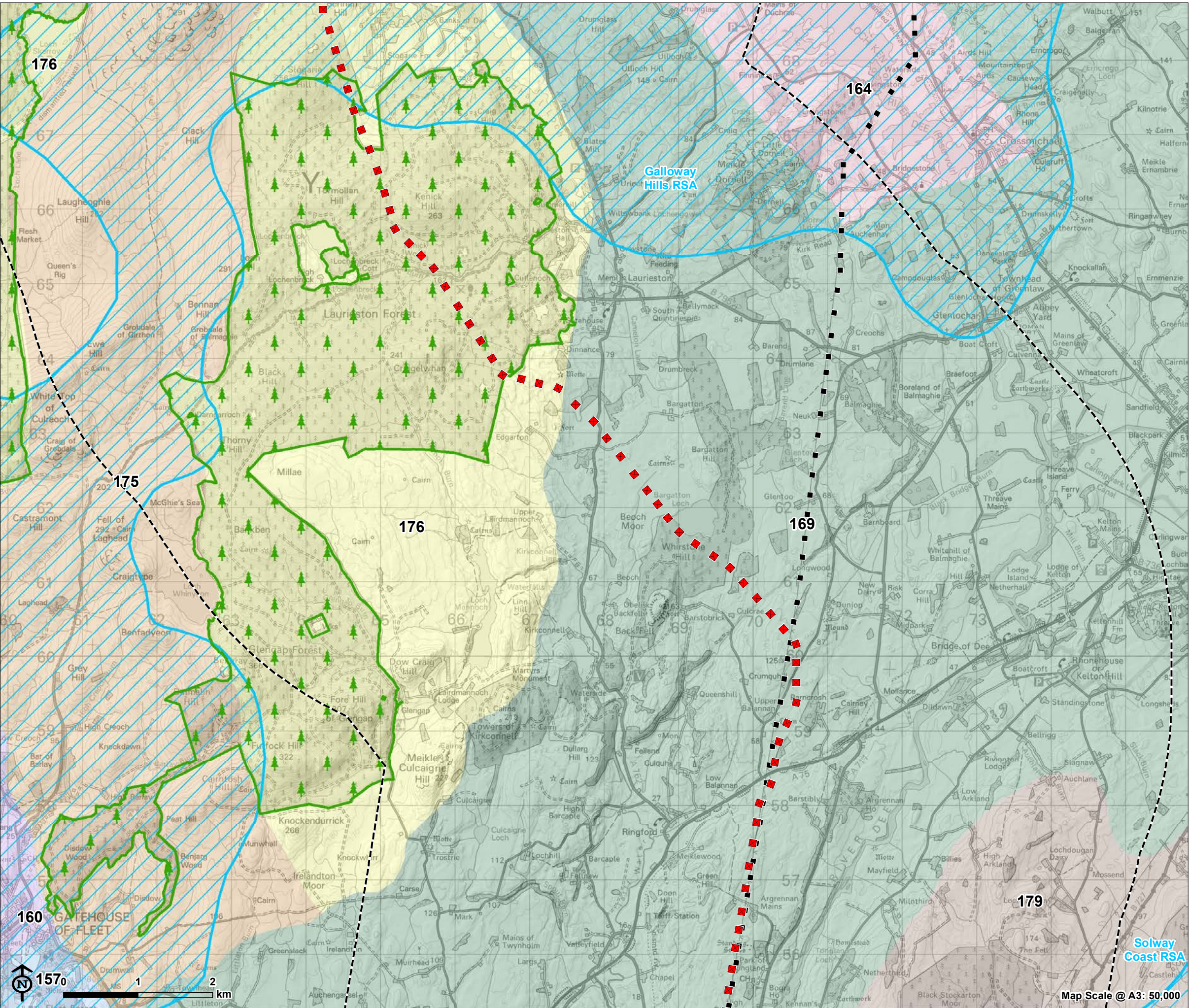
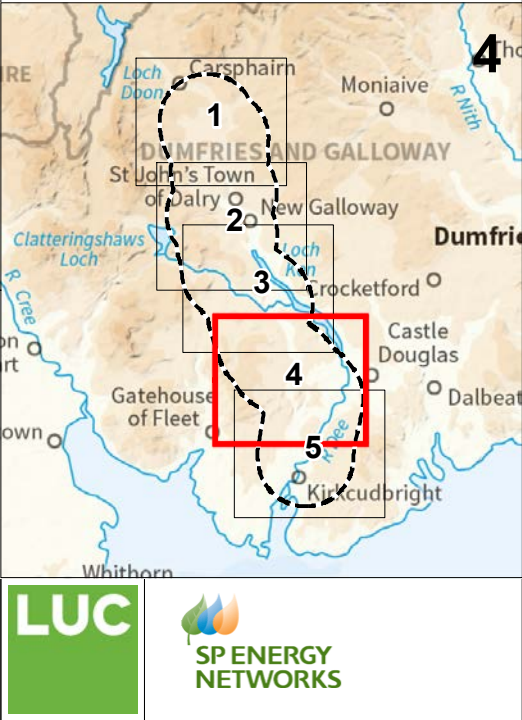
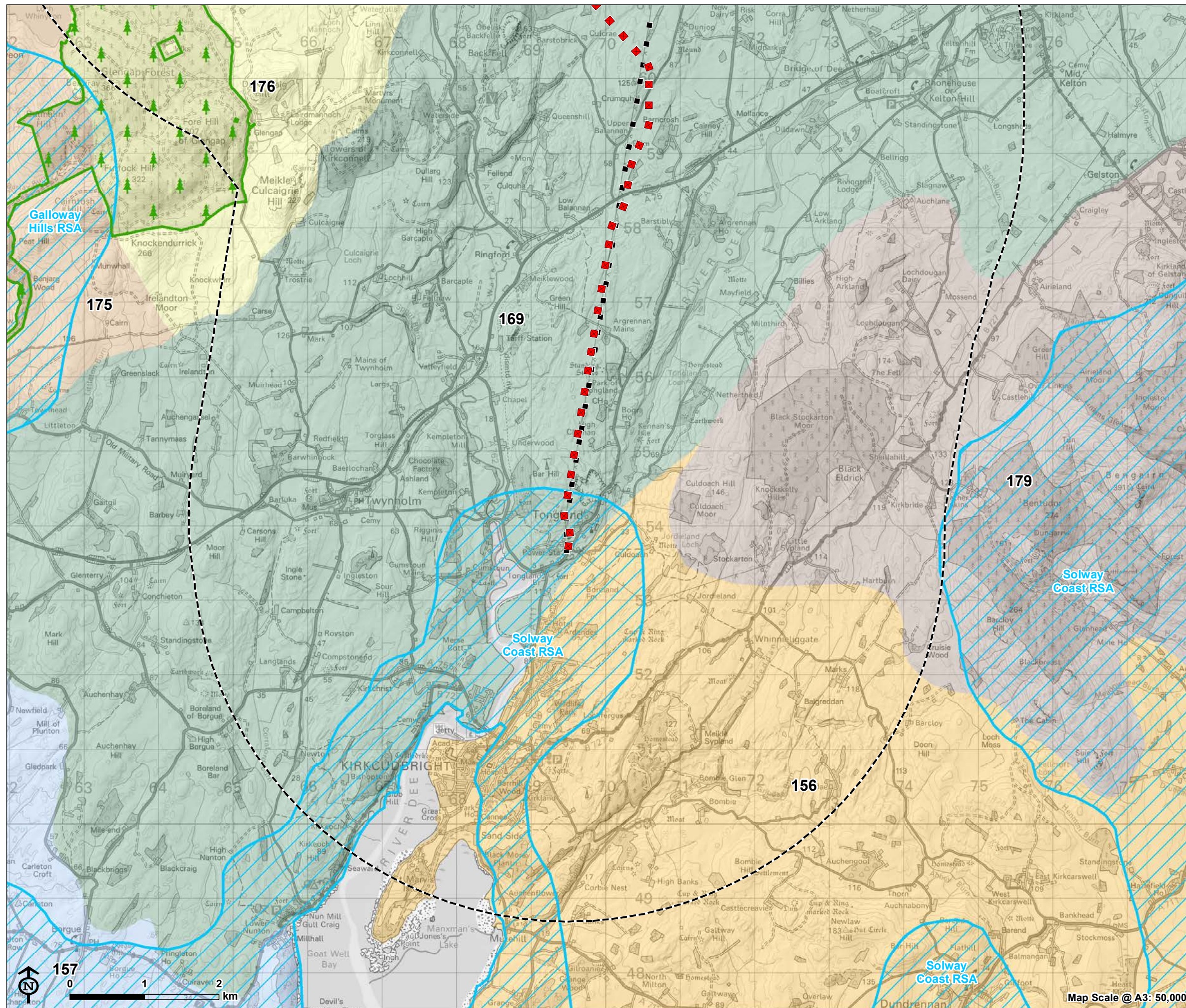


Figure 7.7.4: Landscape Character Types (LCTs) and Designated Landscapes



Note: See Appendix 7.2 for detailed notes on data and information contained on figure.





KTR Project EIA Report

Figure 7.7.5: Landscape Character Types (LCTs) and Designated Landscapes

- Overhead line infrastructure**
- Glenlee to Tongland (steel lattice tower)
 - Existing tower for removal
 - 5km radius study area from KTR connections
- 2019 SNH landscape character types**
- 156. Peninsula
 - 157. Peninsula with Gorsey Knolls
 - 169. Drumlin Pastures
 - 175. Foothills - Dumfries & Galloway
 - 176. Foothills with Forest - Dumfries & Galloway
 - 179. Coastal Uplands
- Designated Landscapes**
- Regional Scenic Area
- Protected Areas**
- Galloway Forest Park

Note: See Appendix 7.2 for detailed notes on data and information contained on figure.

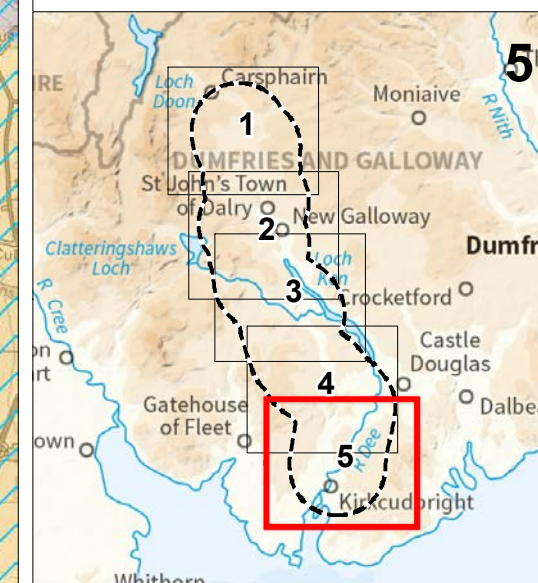


Figure 7.8.1: Local Landscape Areas (LLAs) and Designated Landscapes

- Overhead line infrastructure**
- Polquhanity to Glenlee via Kendoon (steel lattice tower)
 - Carsfad to Kendoon (wood pole)
 - Existing tower for removal
 - 5km radius study area from KTR connections

Landscape character assessment and historic environment audit for Galloway Glens Landscape Partnership (2017)

- Local Landscape Areas (LLAs)**
- LLA 1. Corserine Summit
 - LLA 2. Silver Flowe Uplands
 - LLA 3. Clatteringshaws
 - LLA 5. Kells Foothills
 - LLA 7. Carsphairn Valley Section
 - LLA 8. Dundegh Valley Section
 - LLA 14. Cairnmore Uplands

- Designated Landscapes**
- Regional Scenic Area (RSA)
 - Galloway Forest Park

Note: See Appendix 7.2 for detailed notes on data and information contained on figure.

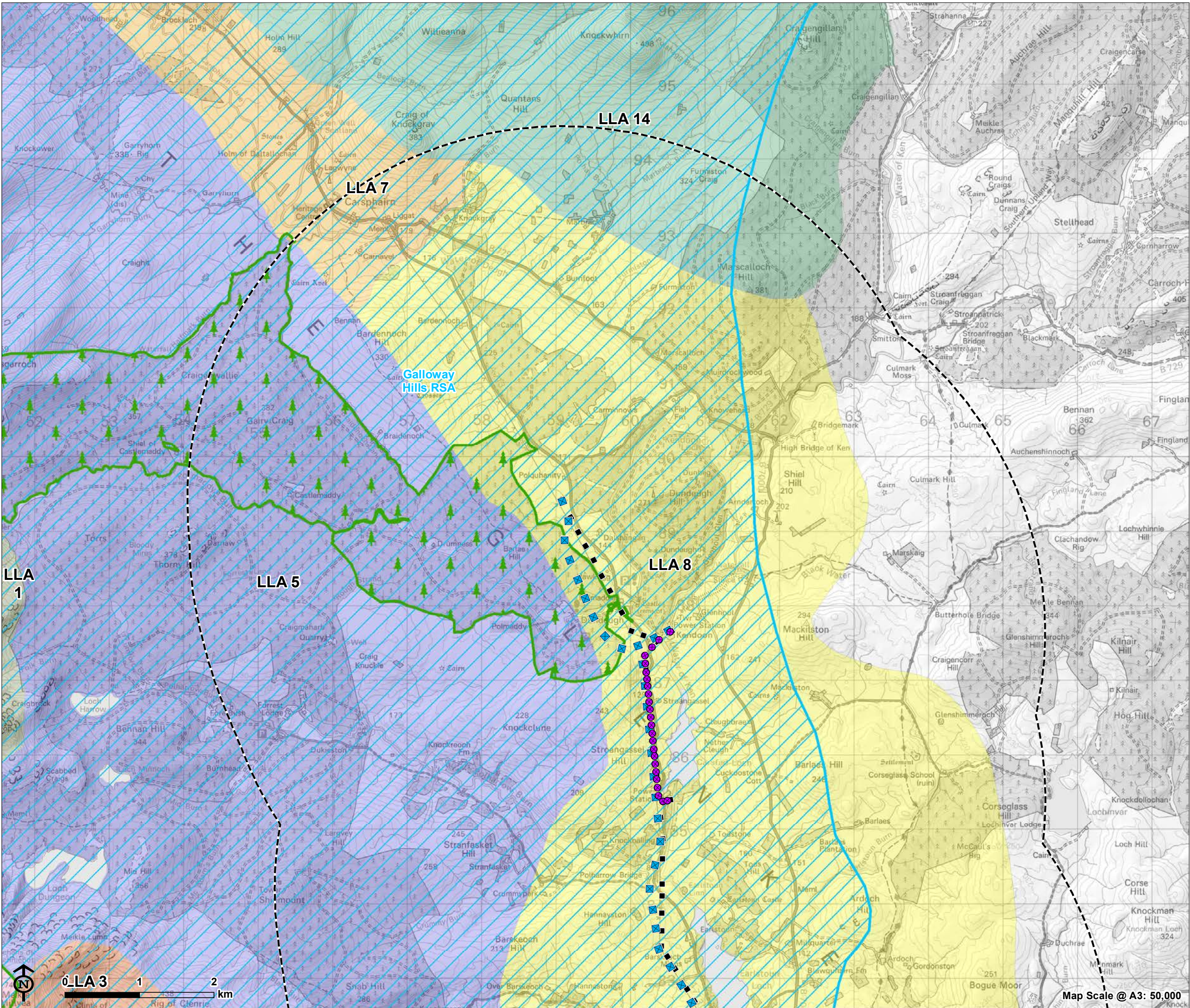


Figure 7.8.2: Local Landscape Areas (LLAs) and Designated Landscapes

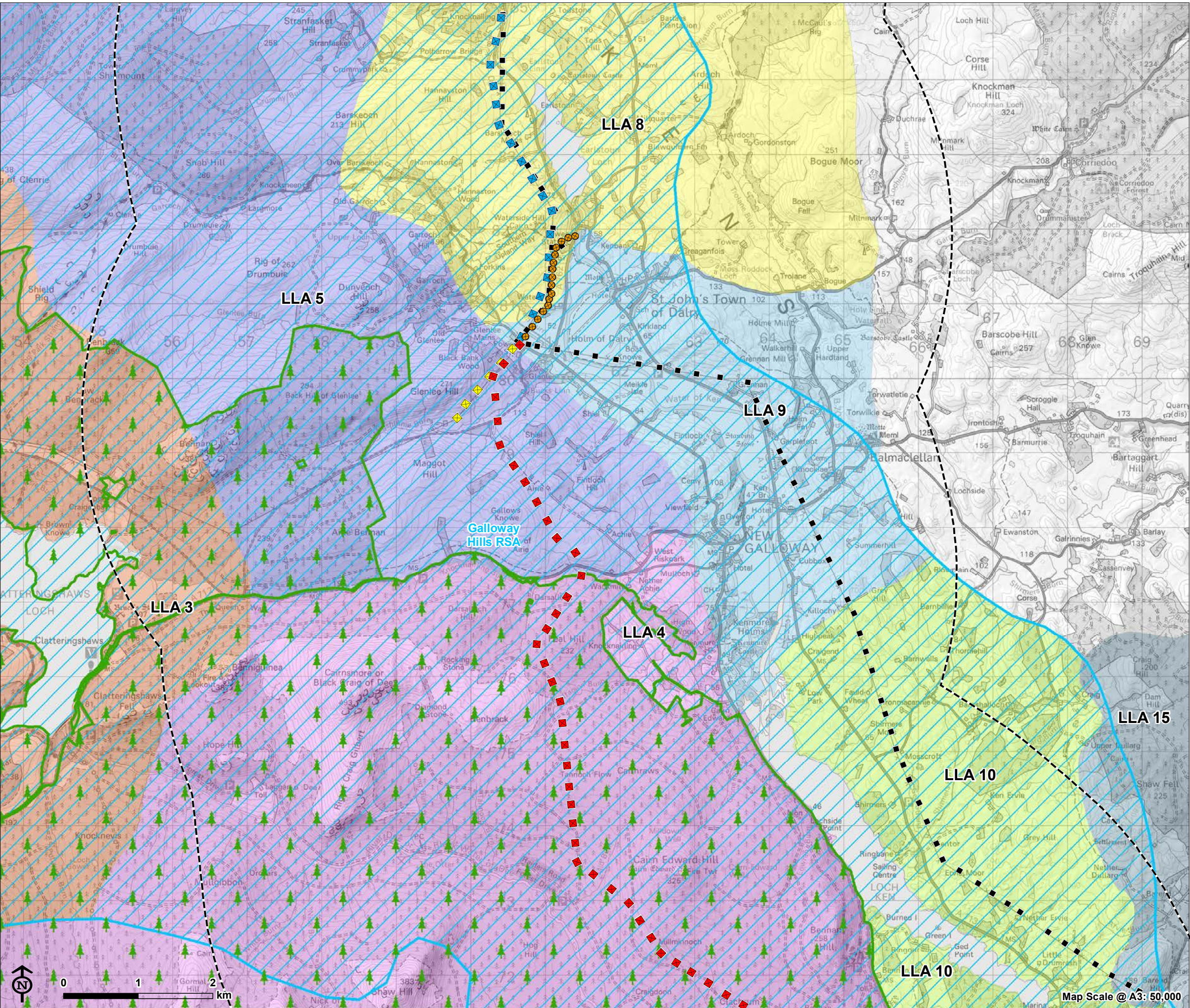
- Overhead line infrastructure**
- Polquharity to Glenlee via Kendoon (steel lattice tower)
 - Earlstoun to Glenlee (wood pole)
 - Glenlee to Tongland (steel lattice tower)
 - BG route deviation (steel lattice tower)
 - Existing tower for removal
 - 5km radius study area from KTR connections

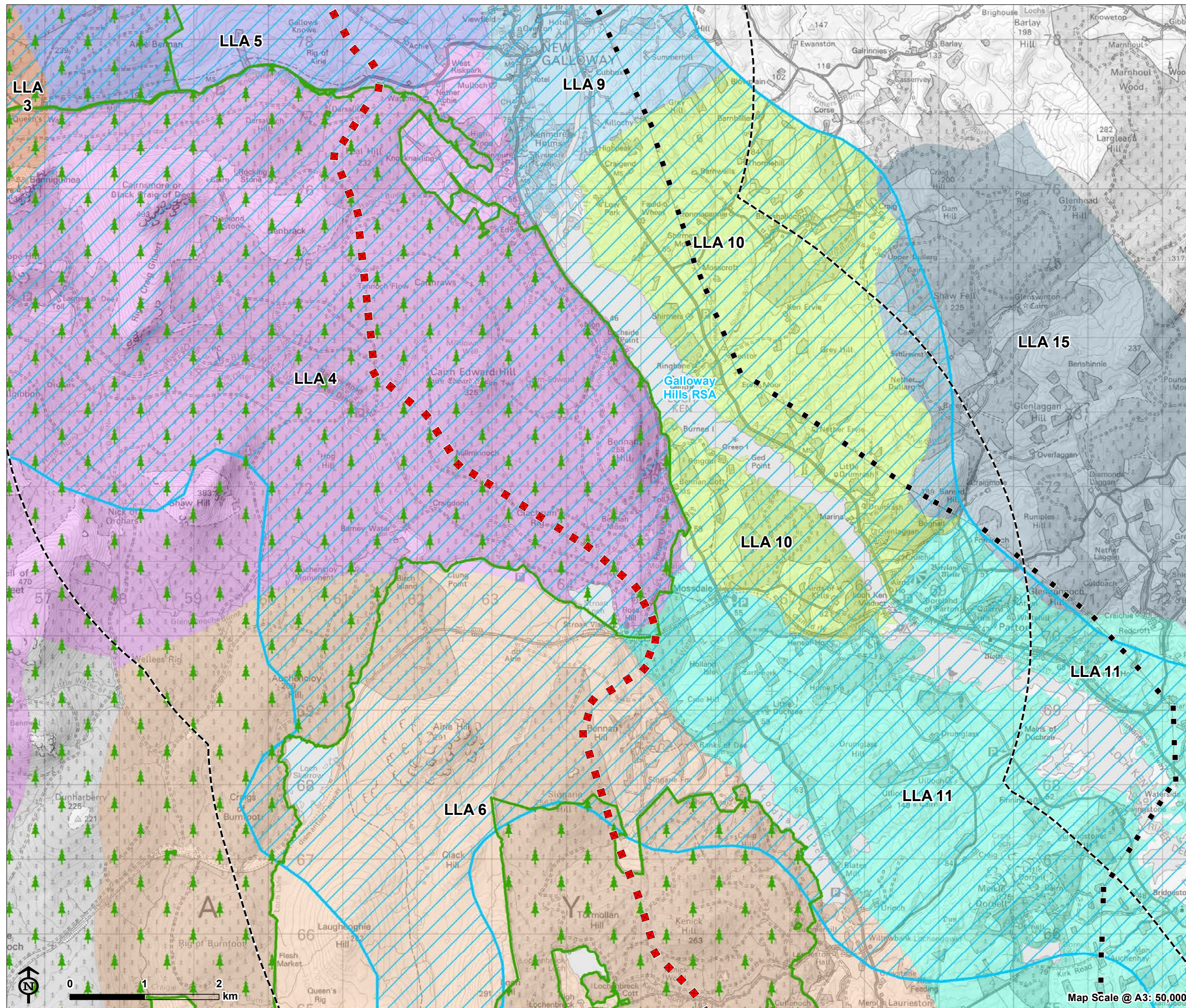
Landscape character assessment and historic environment audit for Galloway Glens Landscape Partnership (2017)

- Local Landscape Areas (LLAs)**
- LLA 3. Clatteringshaws
 - LLA 4. Cairn Edward Uplands
 - LLA 5. Kells Foothills
 - LLA 8. Dundegh Valley Section
 - LLA 9. Kenmure Valley Section
 - LLA 10. Upper Loch Ken Valley Section
 - LLA 11. Castle Douglas Drumlin Pastures
 - LLA 15. Mochum Fell Upland Fringe

- Designated Landscapes**
- Regional Scenic Area
 - Protected Areas**
 - Galloway Forest Park

Note: See Appendix 7.2 for detailed notes on data and information contained on figure.





KTR Project EIA Report

Figure 7.8.3: Local Landscape Areas (LLAs) and Designated Landscapes

Overhead line infrastructure

- Glenlee to Tongland (steel lattice tower)
- Existing tower for removal
- 5km radius study area from KTR connections

Landscape character assessment and historic environment audit for Galloway Glens Landscape Partnership (2017)

Local Landscape Areas (LLAs)

- LLA 3. Clatteringshaws
- LLA 4. Cairn Edward Uplands
- LLA 5. Kells Foothills
- LLA 6. Laurieston Foothills
- LLA 9. Kenmure Valley Section
- LLA 10. Upper Loch Ken Valley Section
- LLA 11. Castle Douglas Drumlins Pastures
- LLA 15. Mochum Fell Upland Fringe

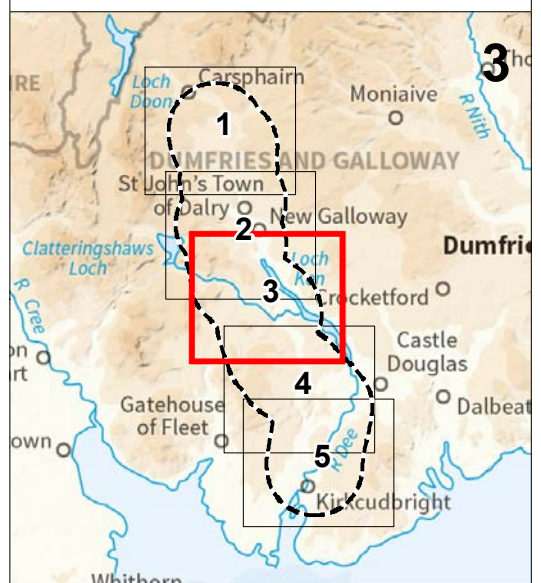
Designated Landscapes

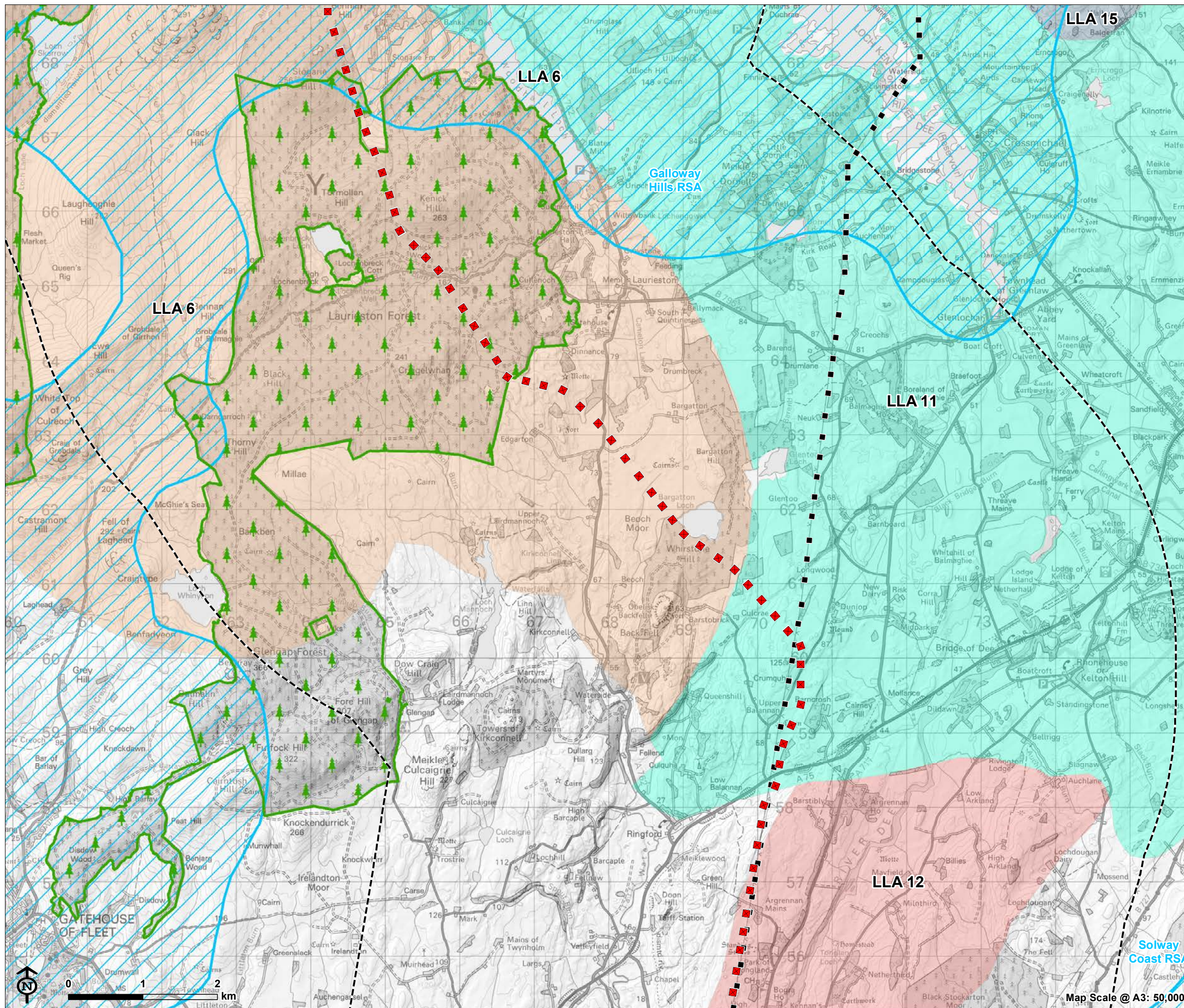
- Regional Scenic Area (RSA)

Protected Areas

- Galloway Forest Park

Note: See Appendix 7.2 for detailed notes on data and information contained on figure.





KTR Project EIA Report

Figure 7.8.4: Local Landscape Areas (LLAs) and Designated Landscapes

- Overhead line infrastructure**
- Glenlee to Tongland (steel lattice tower)
 - Existing tower for removal
 - 5km radius study area from KTR connections

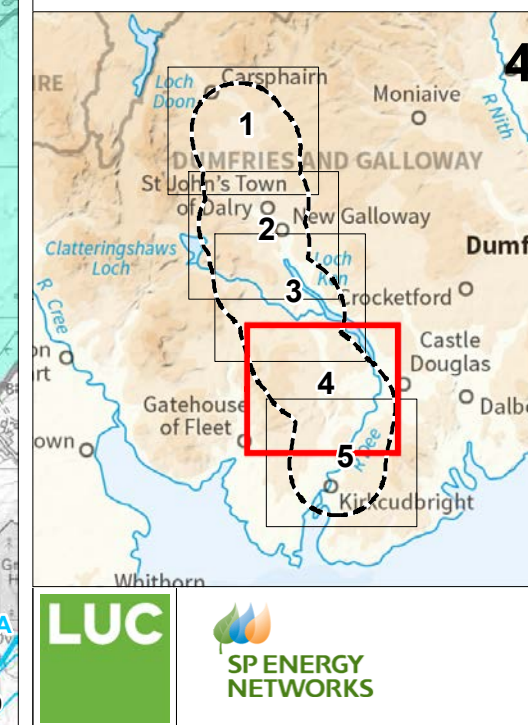
Landscape character assessment and historic environment audit for Galloway Glens Landscape Partnership (2017)

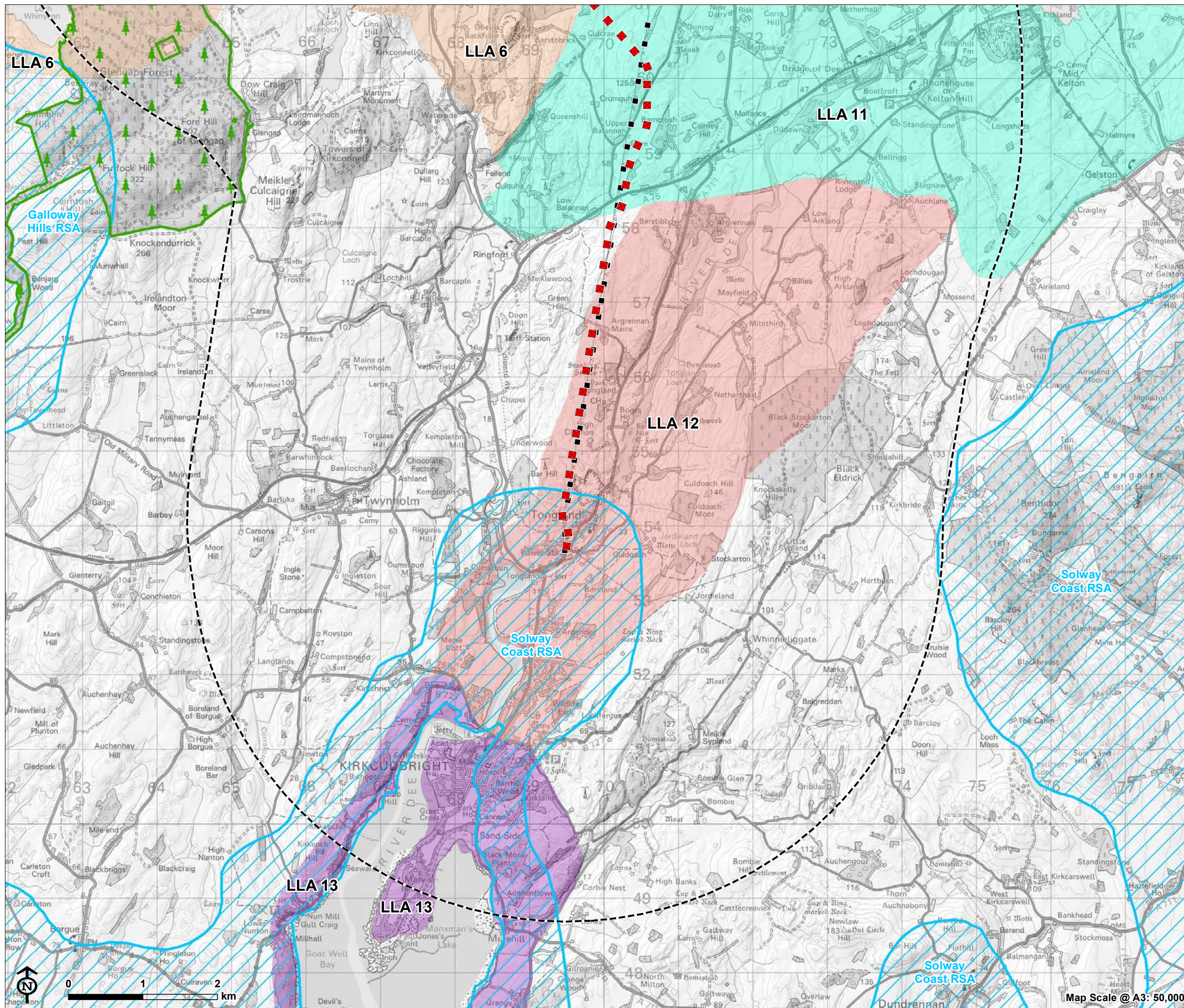
- Local Landscape Areas (LLAs)**
- LLA 6. Laurieston Foothills
 - LLA 11. Castle Douglas Drumlin Pastures
 - LLA 12. Tongland Valley Section
 - LLA 15. Mochum Fell Upland Fringe

- Designated Landscapes**
- Regional Scenic Area (RSA)

- Protected Areas**
- Galloway Forest Park

Note: See Appendix 7.2 for detailed notes on data and information contained on figure.





KTR Project EIA Report

Figure 7.8.5: Local Landscape Areas (LLAs) and Designated Landscapes

- Overhead line infrastructure**
- Glenlee to Tongland (steel lattice tower)
 - Existing tower for removal
 - 5km radius study area from KTR connections

Landscape character assessment and historic environment audit for Galloway Glens Landscape Partnership (2017)

- Local Landscape Areas (LLAs)**
- LLA 6. Laurieston Foothills
 - LLA 11. Castle Douglas Drumlins Pastures
 - LLA 12. Tongland Valley Section
 - LLA 13. Kirkcudbright Bay

- Designated Landscapes**
- Regional Scenic Area
 - Protected Areas**
 - Galloway Forest Park

Note: See Appendix 7.2 for detailed notes on data and information contained on figure.

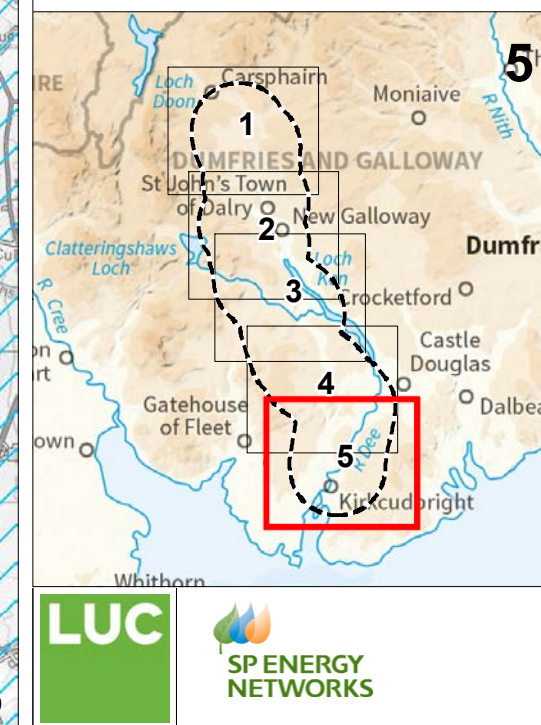
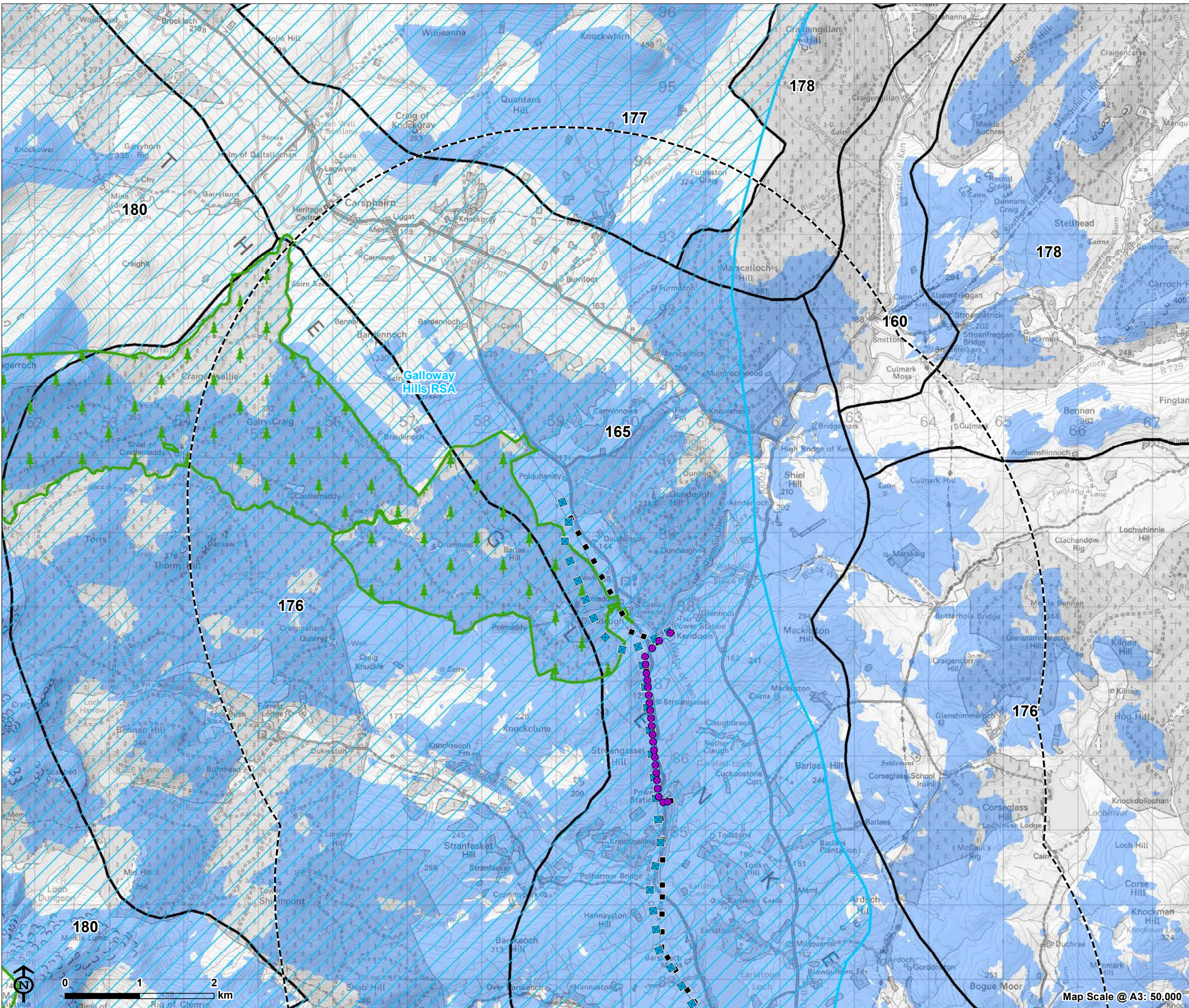


Figure 7.9.1: Landscape Character Types (LCTs), Designated Landscapes and Zone of Theoretical Visibility (ZTV) - Bare Earth



- Overhead line infrastructure**
- Polquhanity to Glenlee via Kendoon (steel lattice tower)
 - Carsfad to Kendoon (wood pole)
 - Existing tower for removal
 - 5km radius study area from KTR connections
 - KTR ZTV using bare earth Digital Terrain Model (DTM)
 - 2019 SNH landscape character types
 - 160. Narrow Wooded River Valley - Dumfries & Galloway
 - 165. Upper Dale - Dumfries & Galloway
 - 176. Foothills with Forest - Dumfries & Galloway
 - 177. Southern Uplands - Dumfries & Galloway
 - 178. Southern Uplands with Forest - Dumfries & Galloway
 - 180. Rugged Uplands - Dumfries & Galloway

- Designated Landscapes**
- Regional Scenic Area (RSA)
- Protected Areas**
- Galloway Forest Park

Note: See Appendix 7.2 for detailed notes on data and information contained on figure.

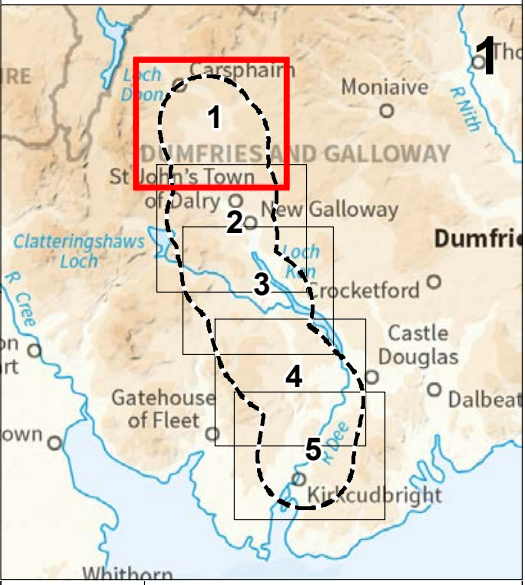
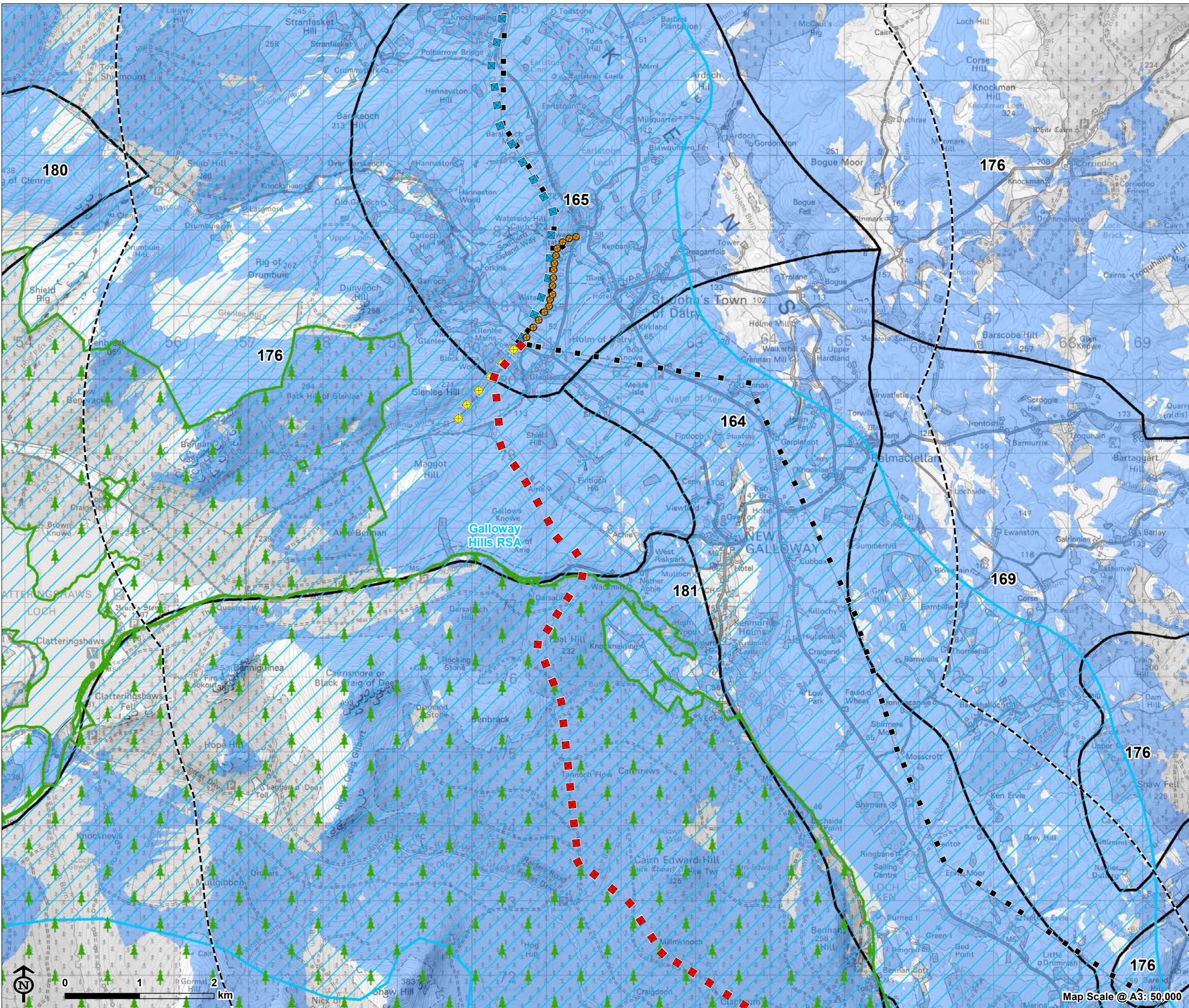
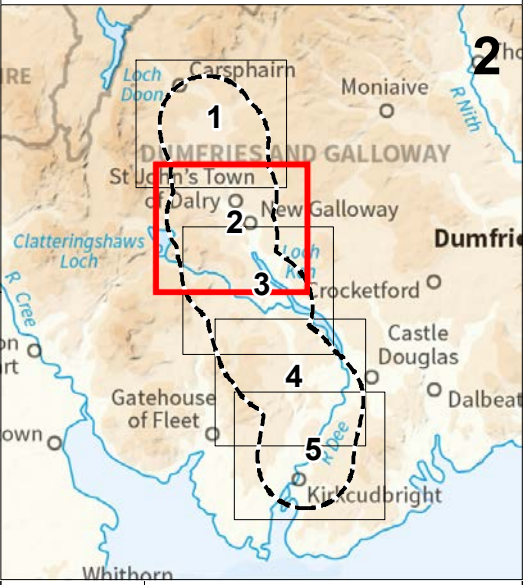


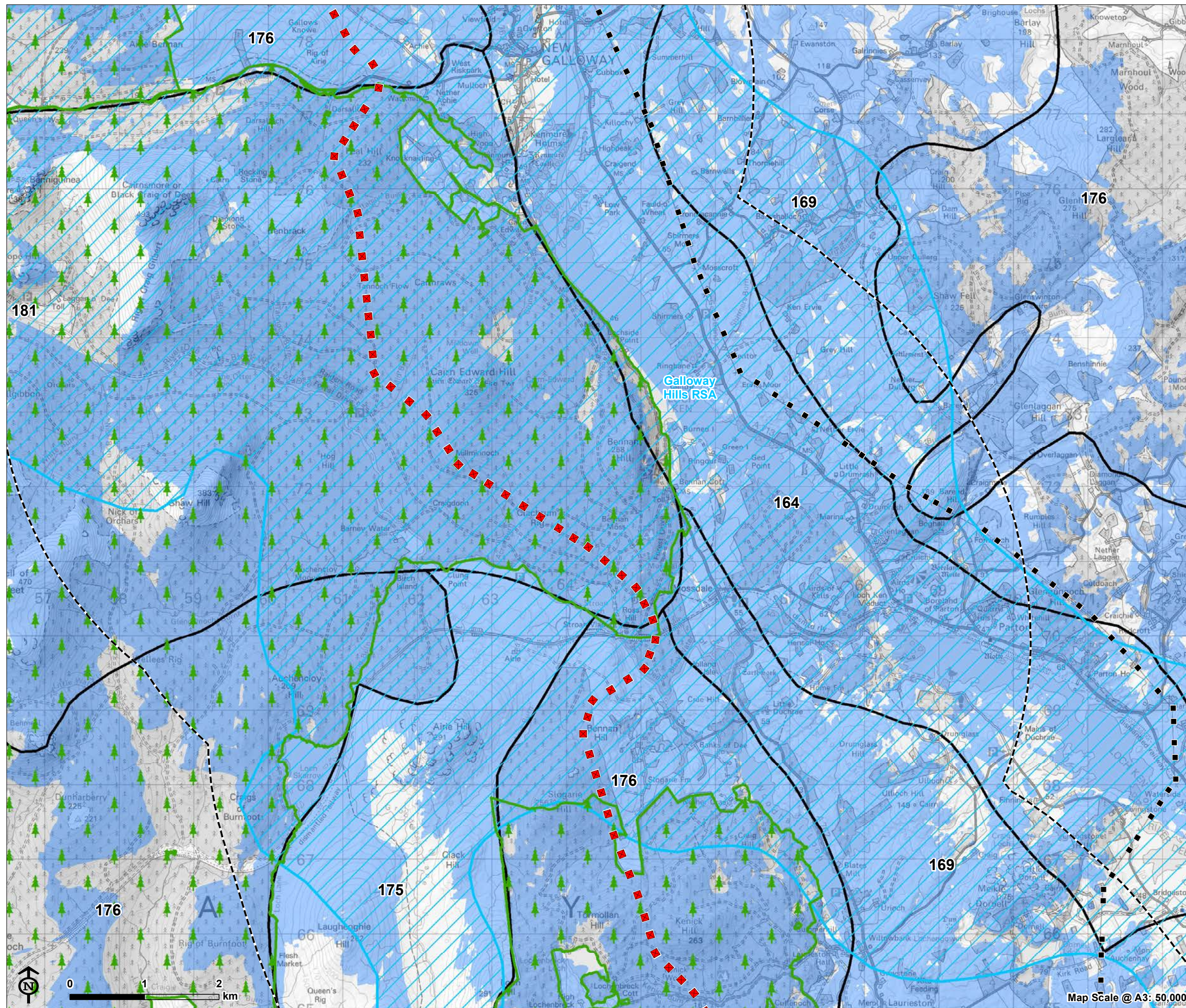
Figure 7.9.2: Landscape Character Types (LCTs), Designated Landscapes and Zone of Theoretical Visibility (ZTV) - Bare Earth



- Overhead line infrastructure**
- Polquharity to Glenlee via Kendoon (steel lattice tower)
 - Earlstoun to Glenlee (wood pole)
 - Glenlee to Tongland (steel lattice tower)
 - BG route re-alignment (steel lattice tower)
 - Existing tower for removal
 - 5km radius study area from KTR connections
 - KTR ZTV using bare earth Digital Terrain Model (DTM)
 - 2019 SNH landscape character types
 - 164. Flooded Valley
 - 165. Upper Dale - Dumfries & Galloway
 - 169. Drumlin Pastures
 - 176. Foothills with Forest - Dumfries & Galloway
 - 180. Rugged Uplands - Dumfries & Galloway
 - 181. Rugged Uplands with Forest - Dumfries & Galloway
 - Designated Landscapes**
 - Regional Scenic Area (RSA)
 - Protected Areas**
 - Galloway Forest Park

Note: See Appendix 7.2 for detailed notes on data and information contained on figure.





KTR Project EIA Report

Figure 7.9.3: Landscape Character Types (LCTs), Designated Landscapes and Zone of Theoretical Visibility (ZTV) - Bare Earth

Overhead line infrastructure

- Glenlee to Tongland (steel lattice tower)
- Existing tower for removal
- 5km radius study area from KTR connections
- KTR ZTV using bare earth Digital Terrain Model (DTM)
- 2019 SNH landscape character types
- 164. Flooded Valley
- 169. Drumlin Pastures
- 175. Foothills - Dumfries & Galloway
- 176. Foothills with Forest - Dumfries & Galloway
- 181. Rugged Uplands with Forest - Dumfries & Galloway

Designated Landscapes

- Regional Scenic Area (RSA)

Protected Areas

- Galloway Forest Park

Note: See Appendix 7.2 for detailed notes on data and information contained on figure.

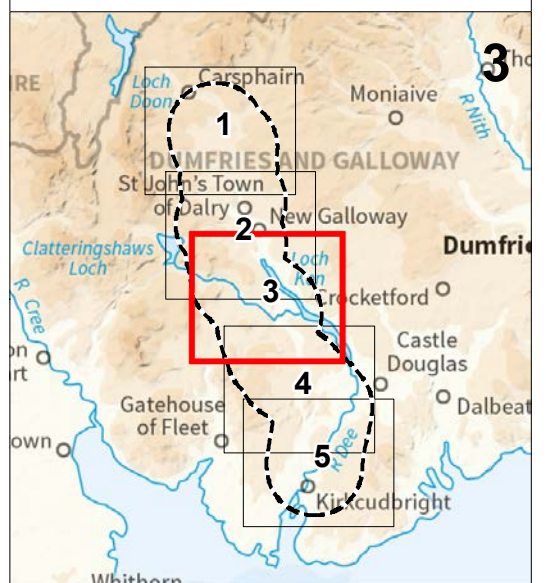
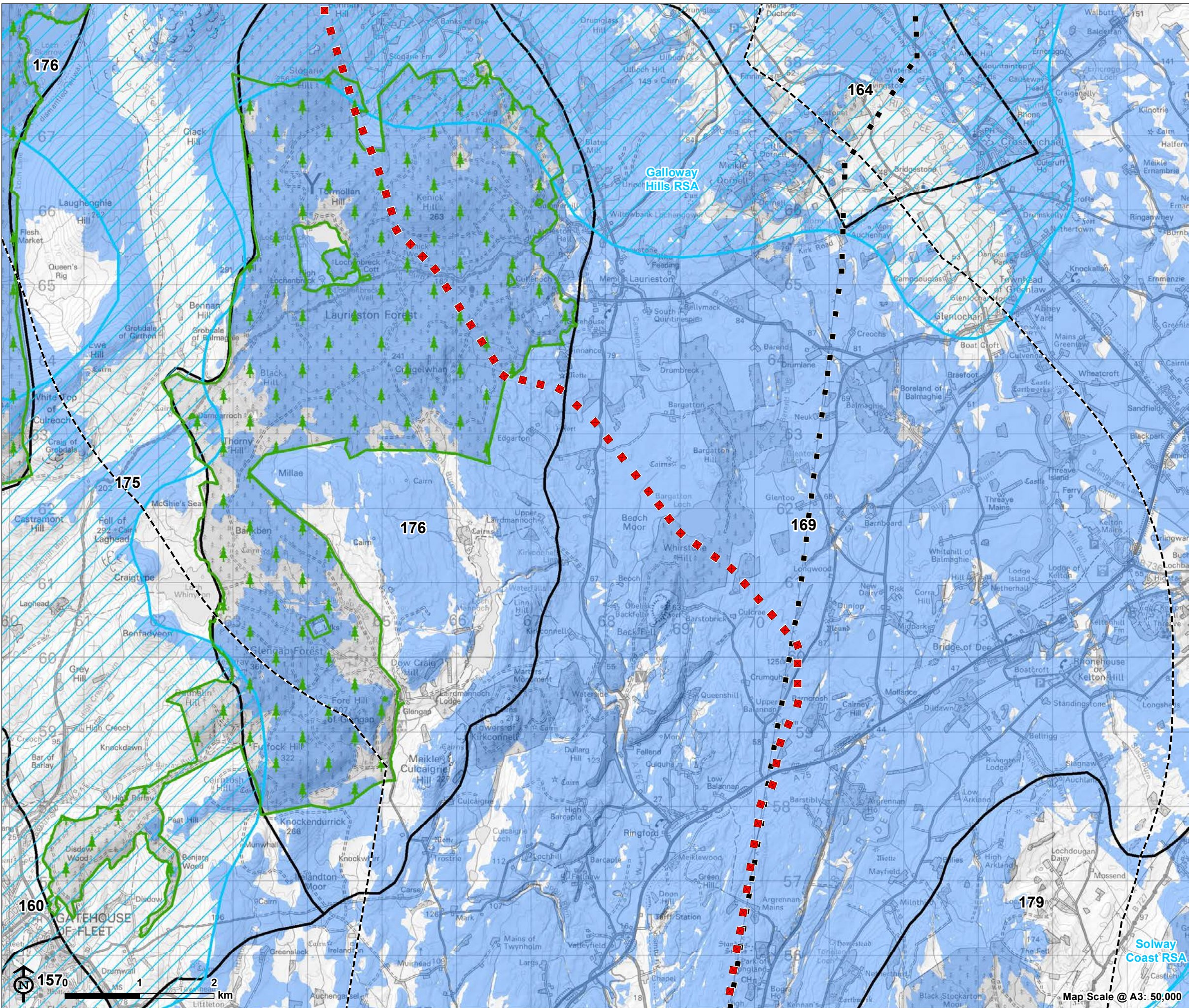


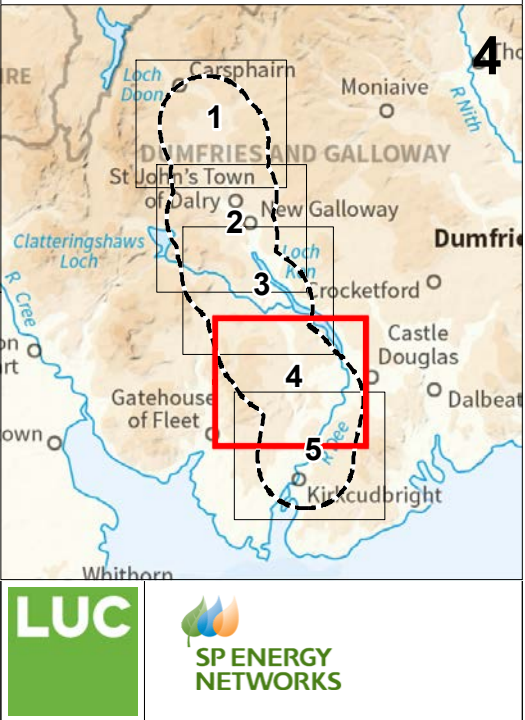
Figure 7.9.4: Landscape Character Types (LCTs), Designated Landscapes and Zone of Theoretical Visibility (ZTV) - Bare Earth

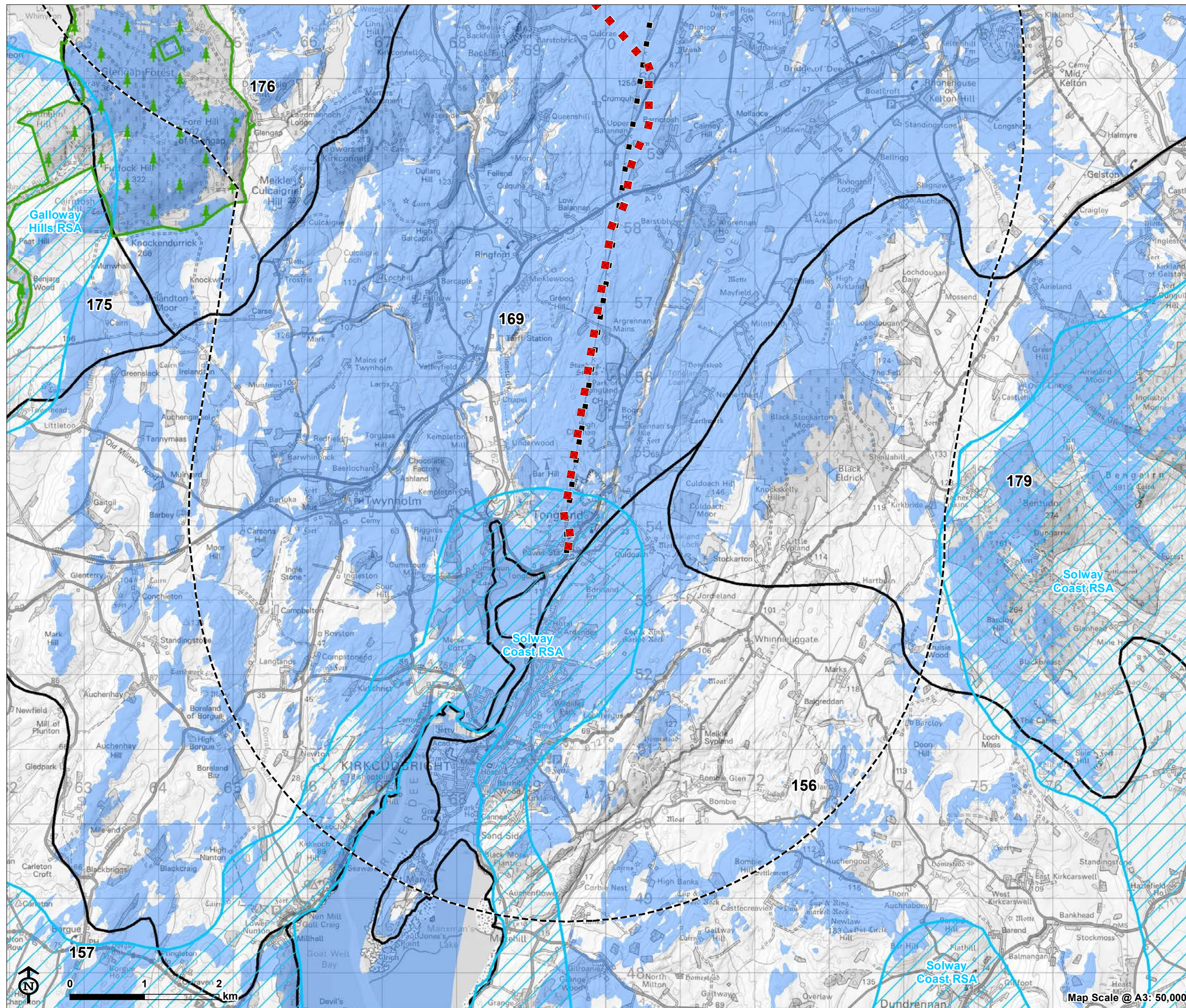


- Overhead line infrastructure**
- Glenlee to Tongland (steel lattice tower)
 - Existing tower for removal
 - 5km radius study area from KTR connections
 - KTR ZTV using bare earth Digital Terrain Model (DTM)
 - 2019 SNH landscape character types
157. Peninsula with Gorsey Knolls
160. Narrow Wooded River Valley - Dumfries & Galloway
164. Flooded Valley
169. Drumlin Pastures
175. Foothills - Dumfries & Galloway
176. Foothills with Forest - Dumfries & Galloway
179. Coastal Uplands

- Designated Landscapes**
- Regional Scenic Area (RSA)
- Protected Areas**
- Galloway Forest Park

Note: See Appendix 7.2 for detailed notes on data and information contained on figure.





KTR Project EIA Report

Figure 7.9.5: Landscape Character Types (LCTs), Designated Landscapes and Zone of Theoretical Visibility (ZTV) - Bare Earth

- Overhead line infrastructure**
- Glenlee to Tongland (steel lattice tower)
 - Existing tower for removal
 - 5km radius study area from KTR connections
 - KTR ZTV using bare earth Digital Terrain Model (DTM)
 - 2019 SNH landscape character types
156. Peninsula
157. Peninsula with Gorsey Knolls
169. Drumlin Pastures
175. Foothills - Dumfries & Galloway
176. Foothills with Forest - Dumfries & Galloway
179. Coastal Uplands
- Designated Landscapes**
- Regional Scenic Area (RSA)
- Protected Areas**
- Galloway Forest Park

Note: See Appendix 7.2 for detailed notes on data and information contained on figure.

