

KTR Project  
EIA Report

Figure 7.13.1: Polquhanity to Glenlee via Kendoon (P-G via K) Zone of Theoretical Visibility (ZTV) - Bare Earth

- Overhead line Infrastructure**
- Polquhanity to Glenlee via Kendoon (steel lattice tower)
  - Existing tower for removal
  - 5km radius study area from KTR connections
- PG via K Steel towers visible within 10km**
- 1 - 5
  - 6 - 11
  - 12 - 17
  - 18 - 25
  - 26 - 37
- Southern Upland Way
- Core path
- Promoted road routes
- Viewpoint
- Layby on A713 near Polquhanity
  - Dundeugh at access to Polmaddy
  - Polmaddy settlement
  - Footbridge access to Kendoon
  - B7000 west of Glenhoull Hill
  - Layby on A713 near Knocknalling Wood
  - Southern Upland Way near Waterside Hill

Note: See Appendix 7.2 for detailed notes on data and information contained on figure.

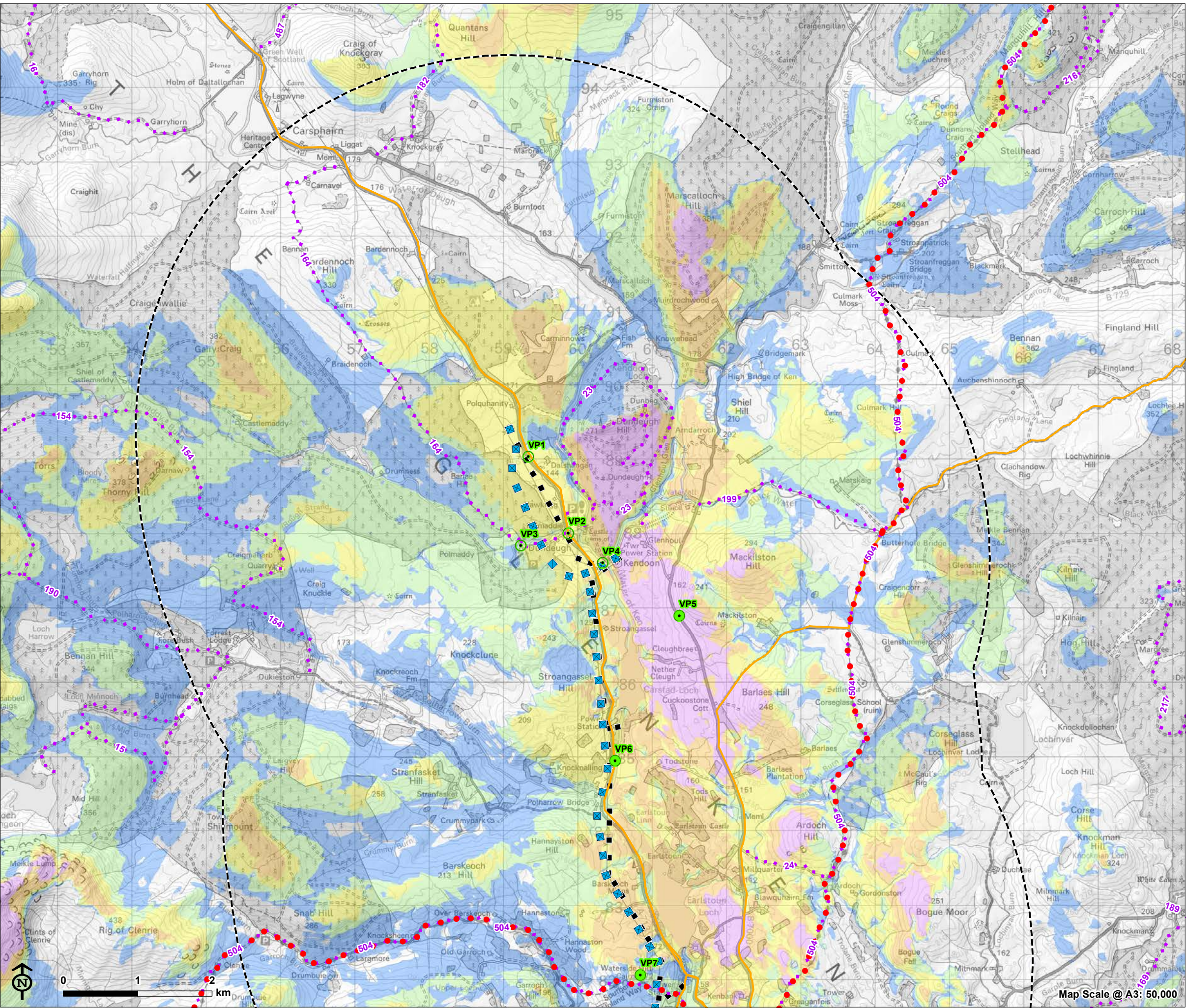
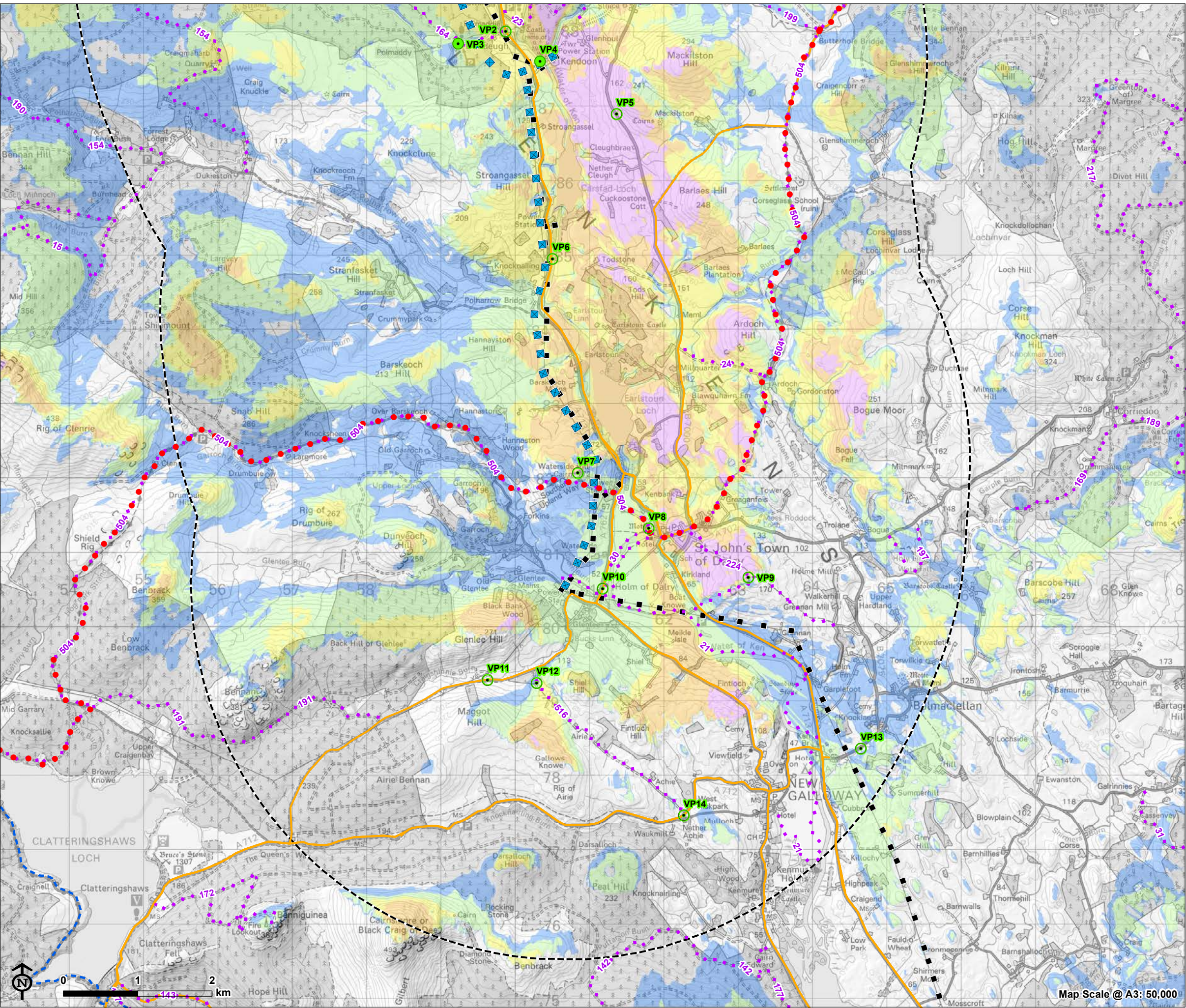
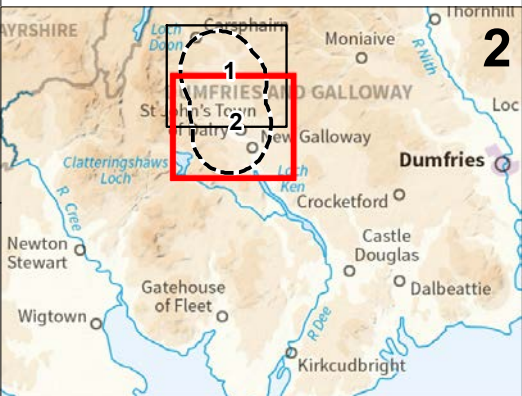




Figure 7.13.2: Polquhany to Glenlee via Kendoon (P-G via K) Zone of Theoretical Visibility (ZTV) - Bare Earth

- Overhead line Infrastructure**
- Polquhany to Glenlee via Kendoon (steel lattice tower)
  - Existing tower for removal
  - 5km radius study area from KTR connections
- PG via K Steel towers visible within 10km**
- 1 - 5
  - 6 - 11
  - 12 - 17
  - 18 - 25
  - 26 - 37
- Southern Upland Way
- Core path
- Sustrans national cycle route 7
- Promoted road routes
- Viewpoint
- Dundeugh at access to Polmaddy
  - Polmaddy settlement
  - Footbridge access to Kendoon
  - B7000 west of Glenhoull Hill
  - Layby on A713 near Knocknalling Wood
  - Southern Upland Way near Waterside Hill
  - Southern Upland Way near St John's Town of Dalry
  - Mulloch Hill
  - A762 north of Glenlee
  - A712 west of Balmacellellan
  - A712, The Queen's Way

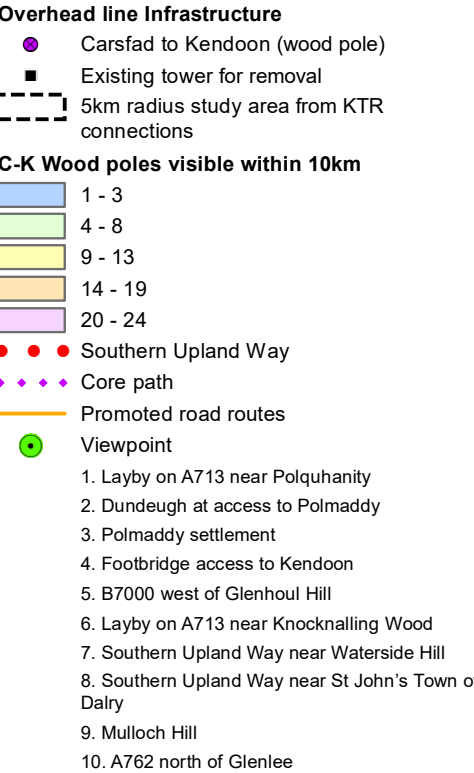
Note: See Appendix 7.2 for detailed notes on data and information contained on figure.



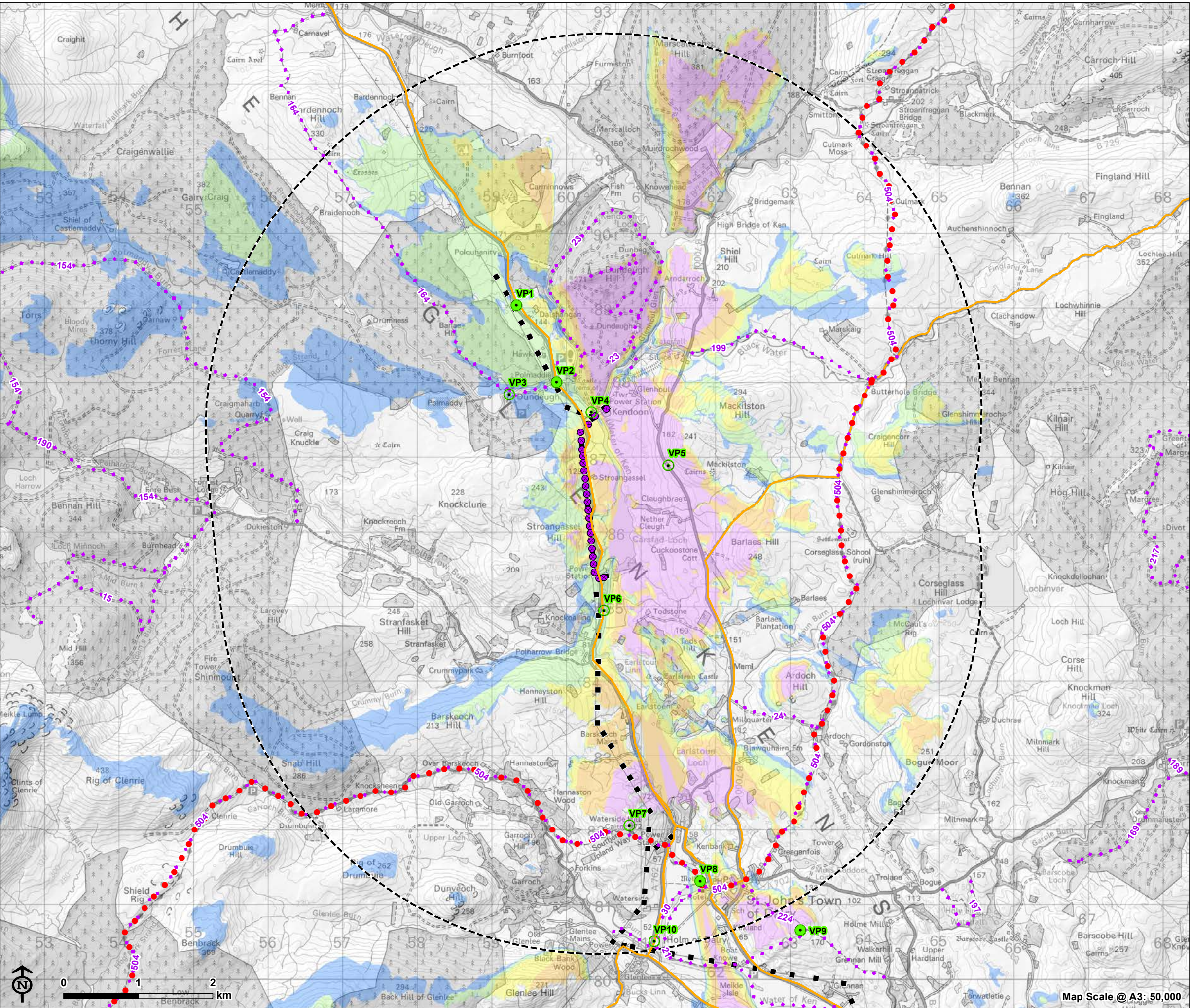


KTR Project  
EIA Report

Figure 7.14.1: Carsfad to Kendoon (C-K)  
Zone of Theoretical Visibility (ZTV) - Bare  
Earth



**Note:** See Appendix 7.2 for detailed notes on data and information contained on figure.





## KTR Project EIA Report

**Figure 7.15.1: Earlstoun to Glenlee (E-G)  
Zone of Theoretical Visibility (ZTV) - Bare  
Earth**

- Overhead line Infrastructure**
- Earlstoun to Glenlee (wood pole)
  - Existing tower for removal
  - ⬡ 5km radius study area from KTR connections
- E-G Wood poles visible within 10km**
- 1 - 3
  - 4 - 7
  - 8 - 12
  - 13 - 16
  - 17 - 19
- Southern Upland Way
- Core path
- Sustrans national cycle route 7
- Promoted road routes
- Viewpoint
1. Dundee at access to Polmaddy
  2. Polmaddy settlement
  3. Footbridge access to Kendoon
  4. B7000 west of Glenhoull Hill
  5. Layby on A713 near Knocknalling Wood
  6. Southern Upland Way near Waterside Hill
  7. Southern Upland Way near St John's Town of Dalry
  8. Mulloch Hill
  9. A762 north of Glenlee
  10. Core Path 516 south-west of Glenlee
  11. A712 west of Balmacellan
  12. A712, The Queen's Way

**Note:** See Appendix 7.2 for detailed notes on data and information contained on figure.

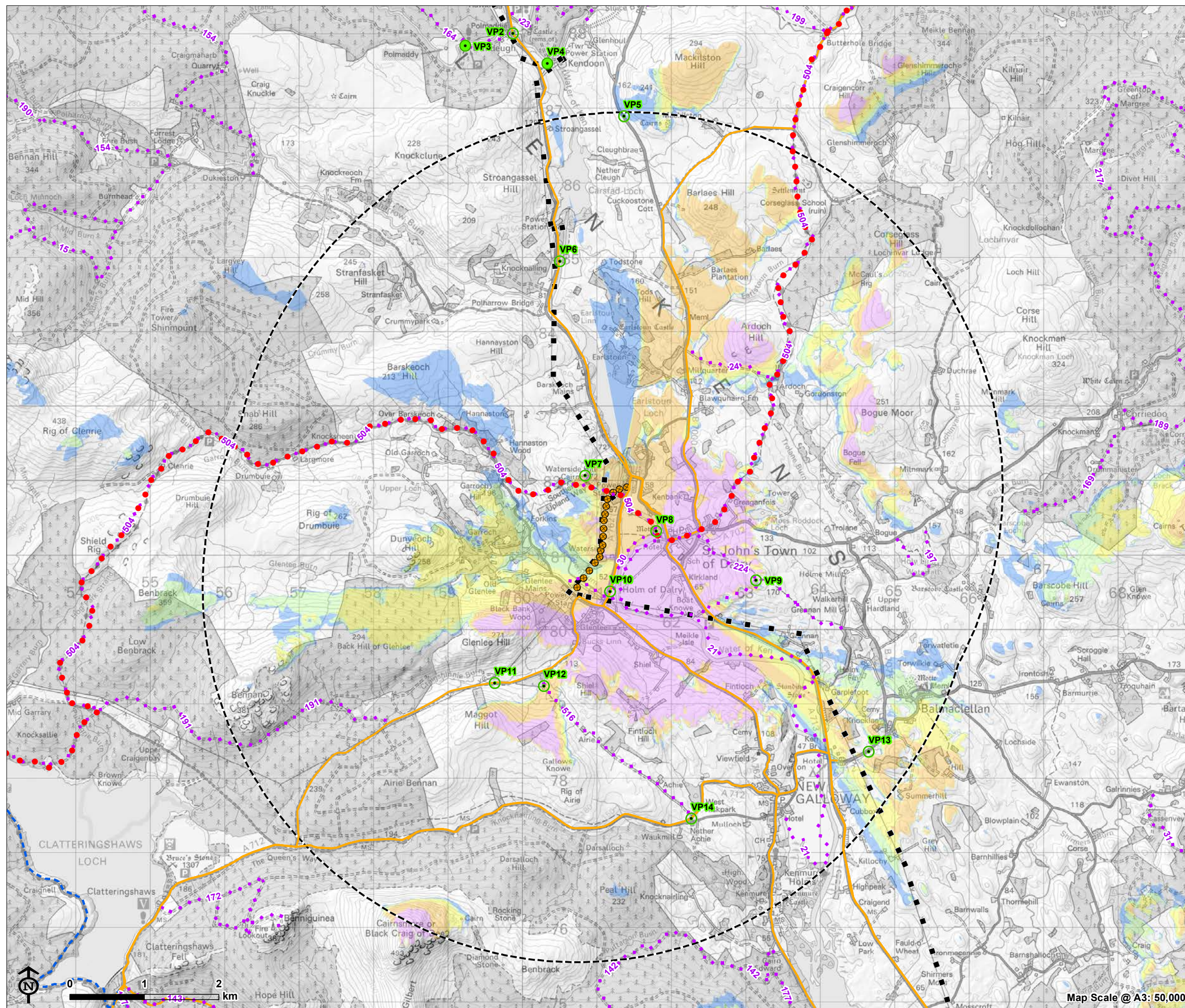
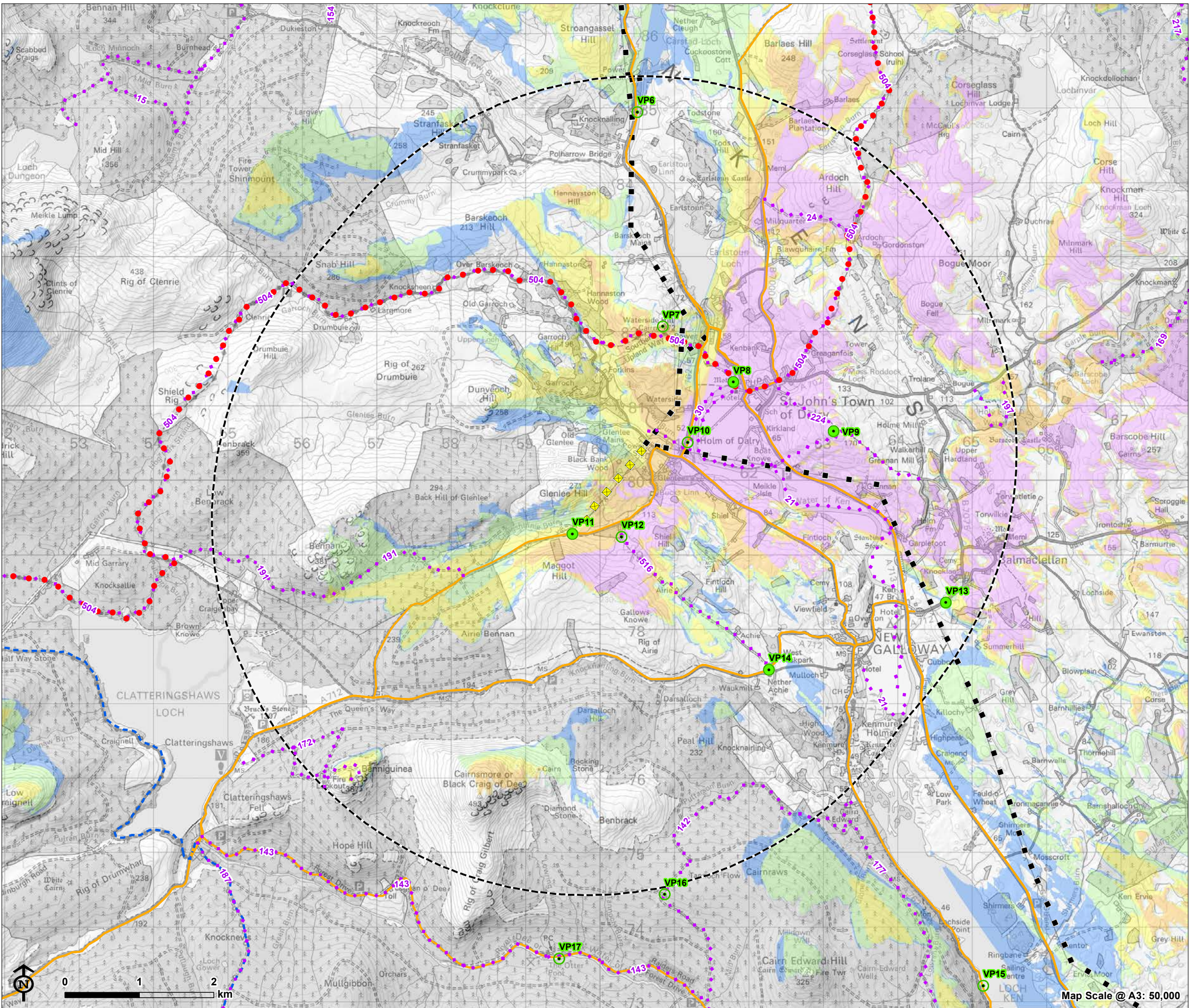




Figure 7.16.1: BG Route Deviation (B-G)  
Zone of Theoretical Visibility (ZTV) - Bare  
Earth

- Overhead line Infrastructure**
- BG route deviation (steel lattice tower)
  - Existing tower for removal
  - 5km radius study area from KTR connections
- B-G Steel towers visible within 10km**
- 1
  - 2
  - 3
  - 4
  - 5 - 6
- Southern Upland Way
- Core path
- Sustrans national cycle route 7
- Promoted road routes
- Viewpoint
6. Layby on A713 near Knocknalling Wood
  7. Southern Upland Way near Waterside Hill
  8. Southern Upland Way near St John's Town of Dalry
  9. Mulloch Hill
  10. A762 north of Glenlee
  12. Core Path 516 south-west of Glenlee
  13. A712 west of Balmacellan
  14. A712, The Queen's Way
  15. A762 west of Loch Ken
  16. Core path near Tannoch Flow
  17. The Otter Pool

**Note:** See Appendix 7.2 for detailed notes on data and information contained on figure.





KTR Project  
EIA Report

Figure 7.17.1: Glenlee to Tongland (G-T)  
Zone of Theoretical Visibility (ZTV) - Bare  
Earth

- Overhead line Infrastructure**
- Glenlee to Tongland (steel lattice tower)
  - Existing tower for removal
  - 5km radius study area from KTR connections
- G-T Steel towers visible within 10km**
- 1 - 8
  - 9 - 16
  - 17 - 25
  - 26 - 36
  - 37 - 81
- Southern Upland Way  
● Core path  
- - - Sustrans national cycle route 7  
- - - Promoted road routes
- Viewpoint
- Layby on A713 near Knocknalling Wood
  - Southern Upland Way near Waterside Hill
  - Southern Upland Way near St John's Town of Dalry
  - Mulloch Hill
  - A762 north of Glenlee
  - Core Path 516 south-west of Glenlee
  - A712 west of Balmacellellan
  - A712, The Queen's Way
  - A762 west of Loch Ken
  - Core path near Tannoch Flow
  - The Otter Pool

Note: See Appendix 7.2 for detailed notes on data and information contained on figure.

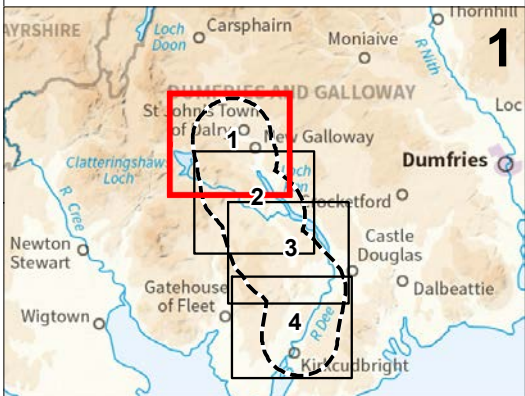
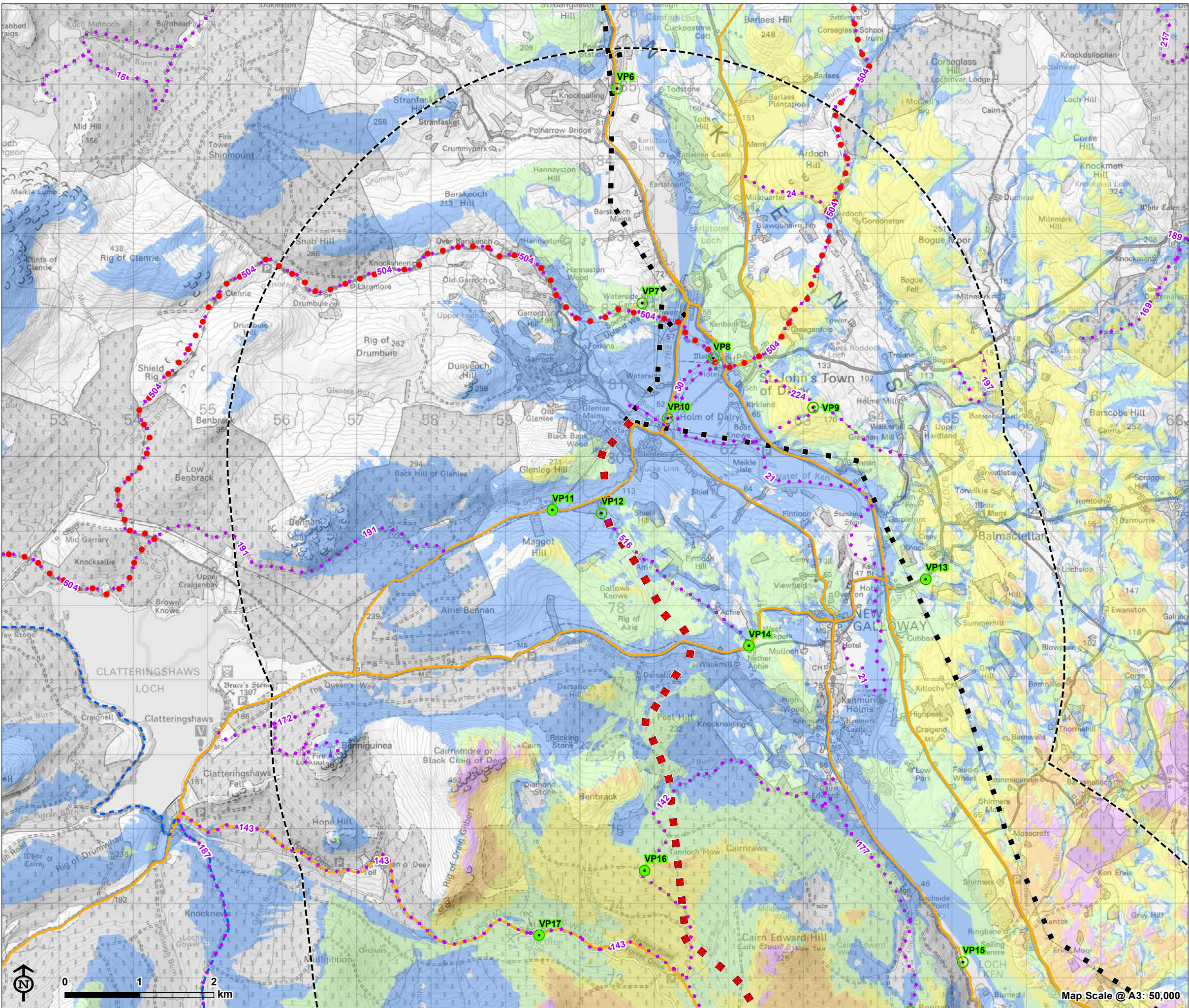
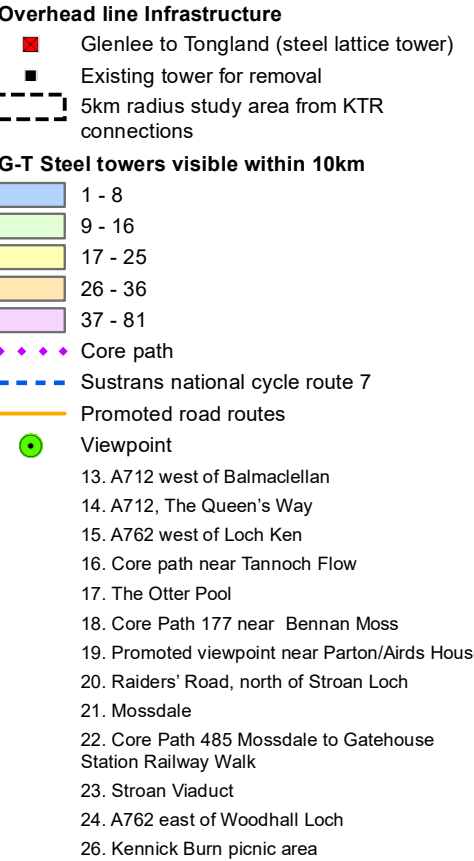




Figure 7.17.2: Glenlee to Tongland (G-T)  
Zone of Theoretical Visibility (ZTV) - Bare  
Earth



**Note:** See Appendix 7.2 for detailed notes on data and information contained on figure.

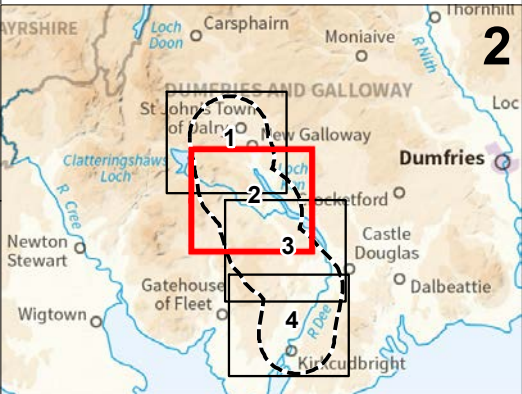
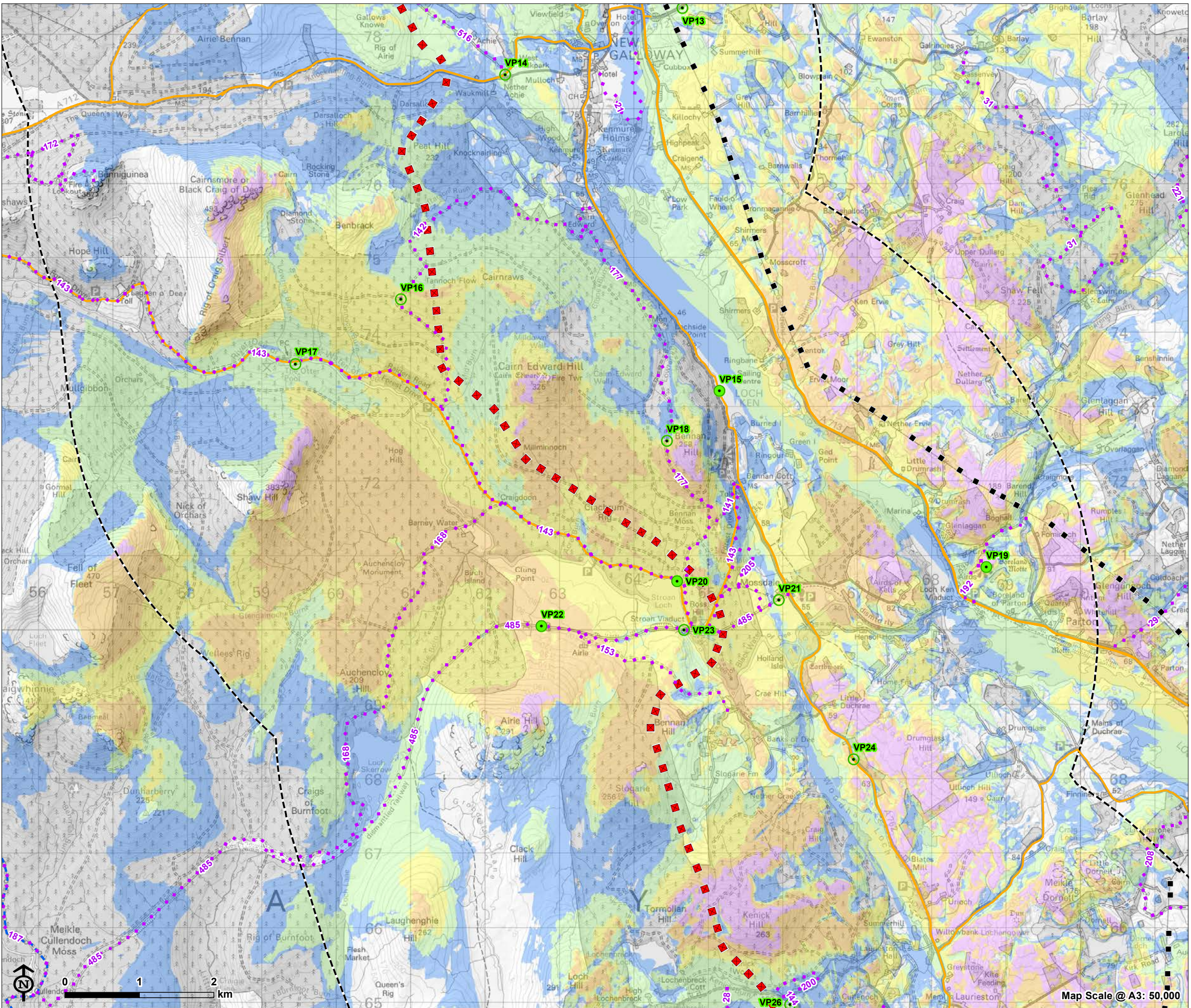




Figure 7.17.3: Glenlee to Tongland (G-T)  
Zone of Theoretical Visibility (ZTV) - Bare  
Earth

- Overhead line Infrastructure**
- Glenlee to Tongland (steel lattice tower)
  - Existing tower for removal
  - 5km radius study area from KTR connections
- G-T Steel towers visible within 10km**
- 1 - 8
  - 9 - 16
  - 17 - 25
  - 26 - 36
  - 37 - 81
- Core path**
- Sustrans national cycle route 7
  - Promoted road routes
- Viewpoint**
- 19. Promoted viewpoint near Parton/Airds House
  - 20. Raiders' Road, north of Stroan Loch
  - 21. Mossdale
  - 22. Core Path 485 Mossdale to Gatehouse Station Railway Walk
  - 23. Stroan Viaduct
  - 24. A762 east of Woodhall Loch
  - 25. A713 near Parton Mill Bridge
  - 26. Kennick Burn picnic area
  - 27. B795 east of Laurieston
  - 28. A762 south of Laurieston
  - 29. Barstobrick Hill (Neilson's Monument)
  - 30. A75 at junction with unclassified road

**Note:** See Appendix 7.2 for detailed notes on data and information contained on figure.

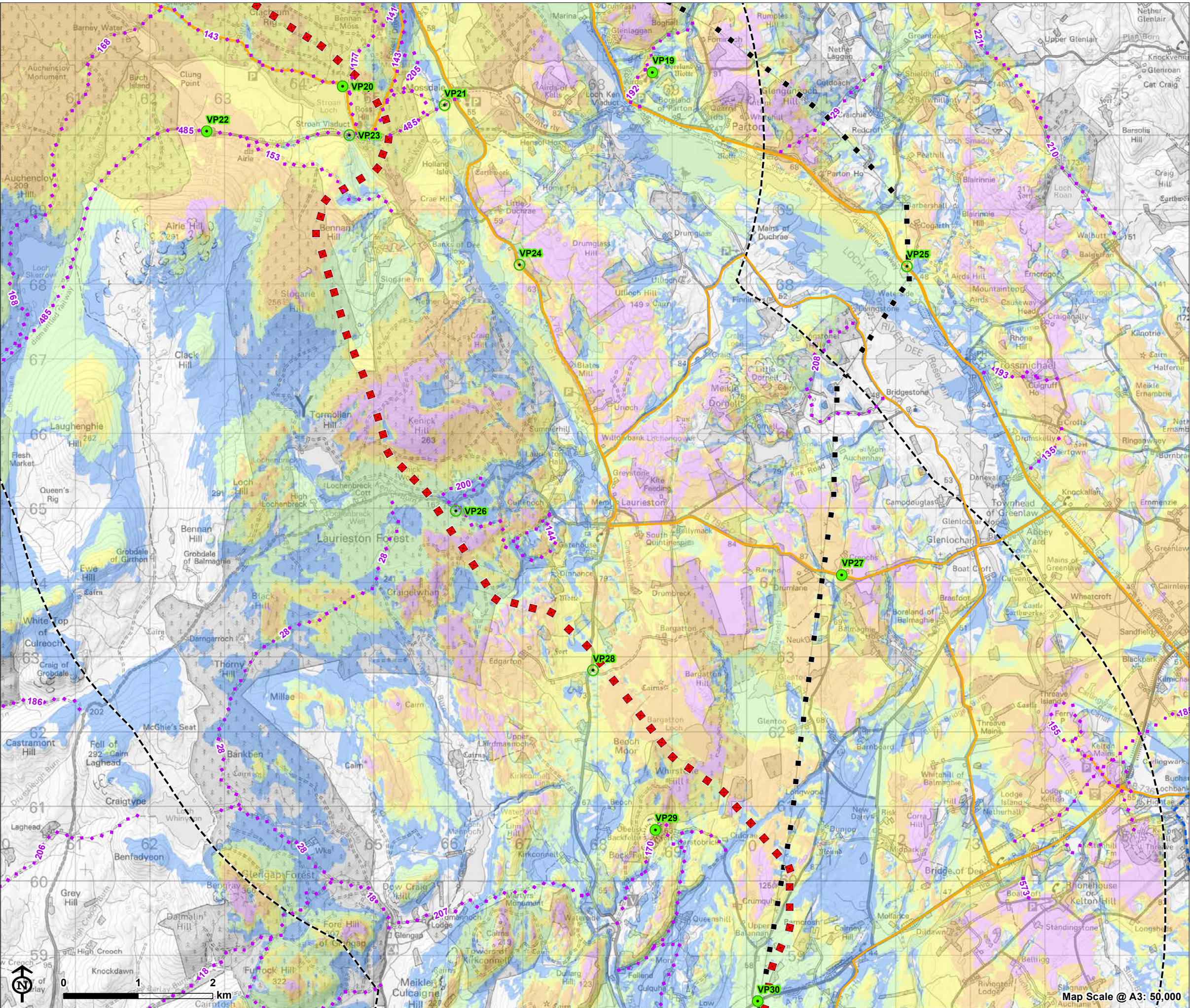
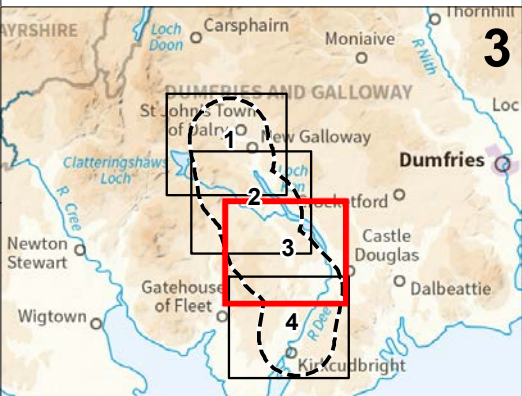
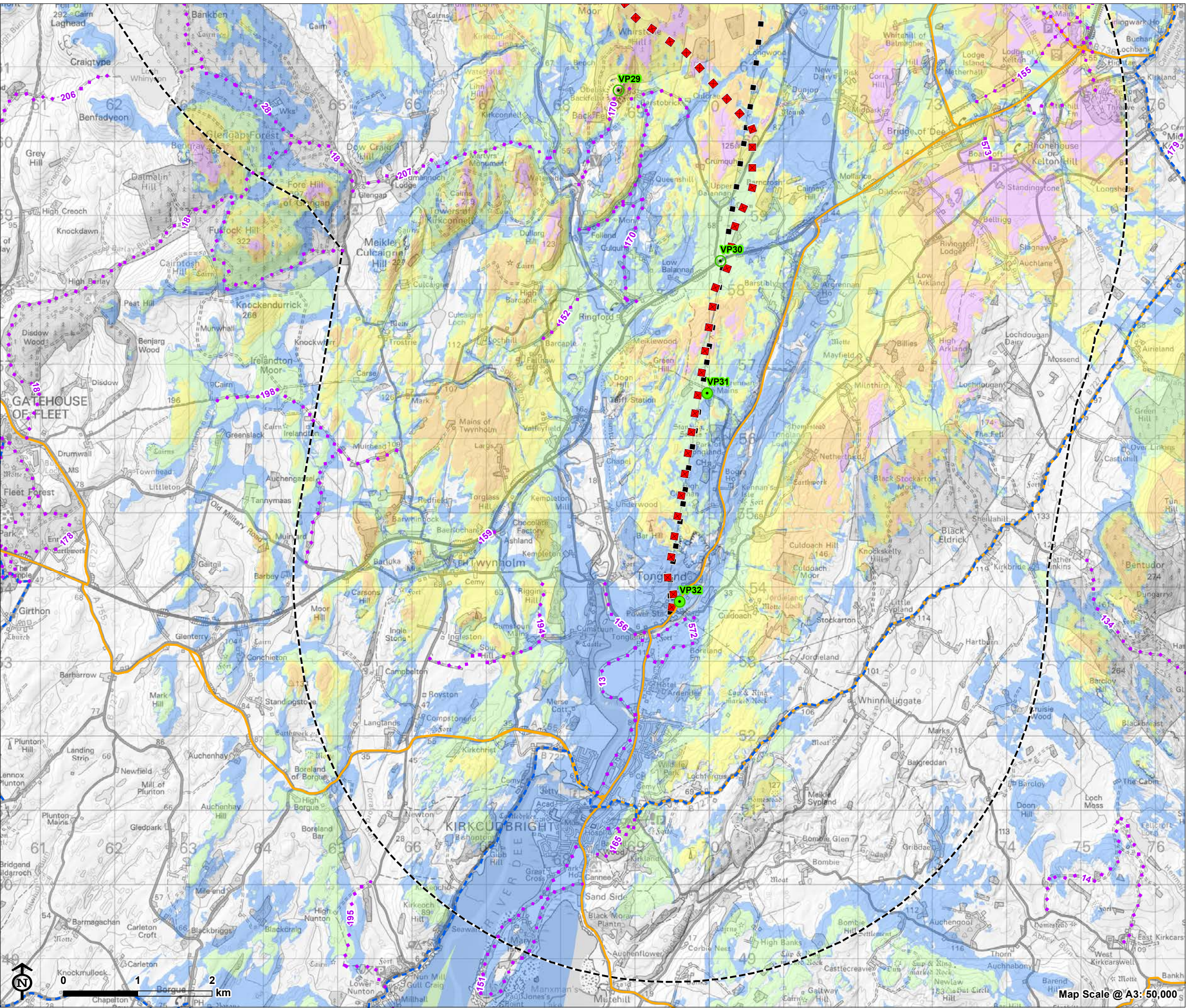
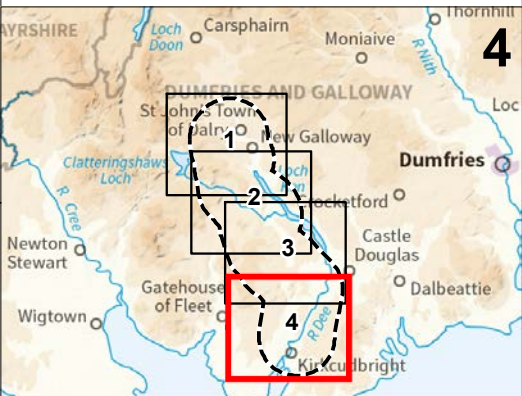




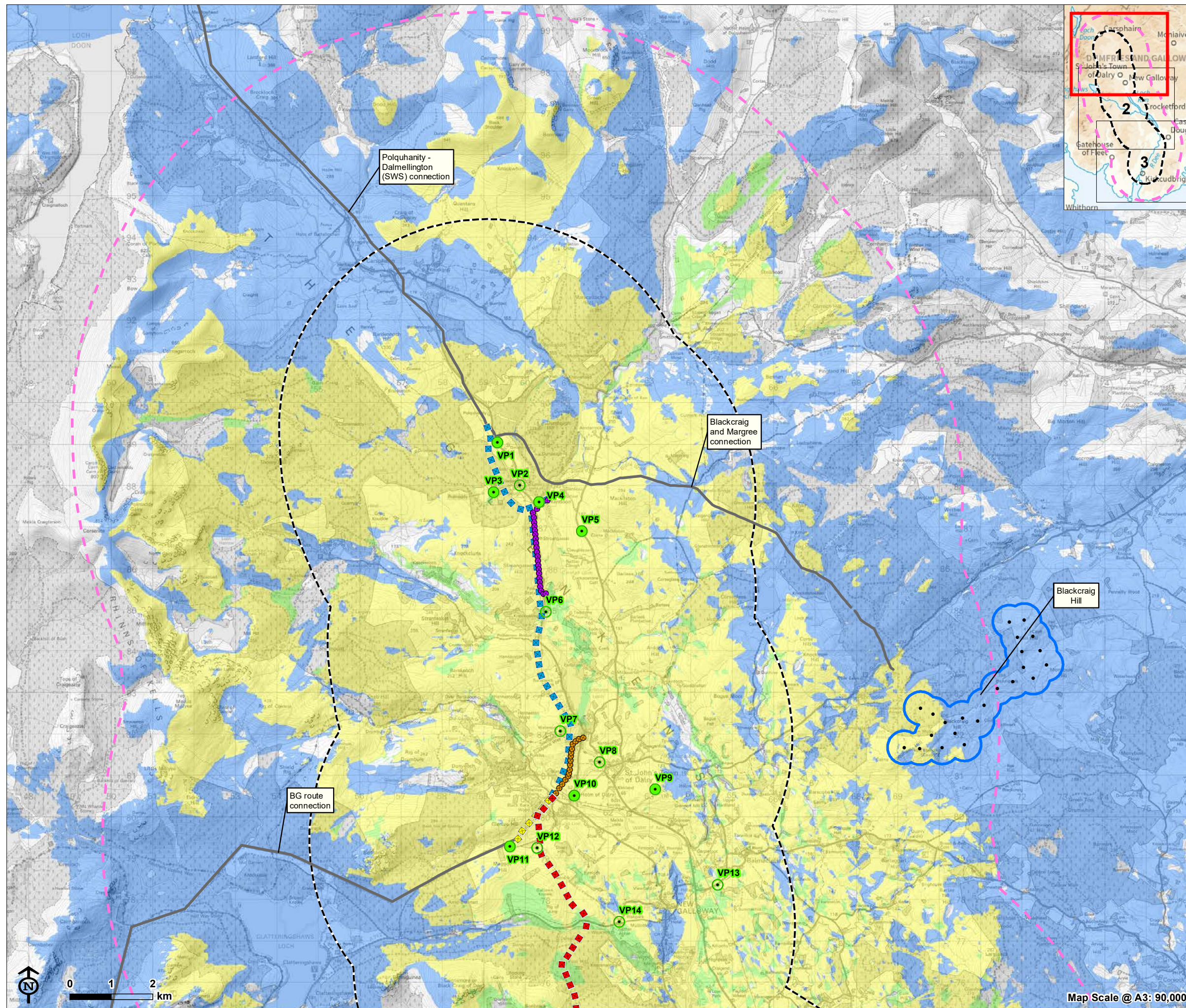
Figure 7.17.4: Glenlee to Tongland (G-T)  
Zone of Theoretical Visibility (ZTV) - Bare  
Earth

- Overhead line Infrastructure**
- Glenlee to Tongland (steel lattice tower)
  - Existing tower for removal
  - 5km radius study area from KTR connections
- G-T Steel towers visible within 10km**
- 1 - 8
  - 9 - 16
  - 17 - 25
  - 26 - 36
  - 37 - 81
- Core path**
- Sustrans national cycle route 7
  - Promoted road routes
- Viewpoint**
- 29. Barstobrick Hill (Neilson's Monument)
  - 30. A75 at junction with unclassified road
  - 31. Unclassified road (U43S) near Argrennan Mains
  - 32. A711 north of Tongland substation

Note: See Appendix 7.2 for detailed notes on data and information contained on figure.







## KTR Project EIA Report

**Figure 7.18.1: KTR Project and Operational Overhead Lines and Wind Farms Cumulative Zone of Theoretical Visibility (CZTV) - Bare Earth**

- Overhead line infrastructure**
- Polquharity to Glenlee via Kendoon (steel lattice tower)
  - Carsfad to Kendoon (wood pole)
  - Earlstoun to Glenlee (wood pole)
  - Glenlee to Tongland (steel lattice tower)
  - BG route deviation (steel lattice tower)
- 5km radius study area from KTR connections**
- 10km radius study area from KTR connections**

### KTR and Operational Developments CZTV

- Other developments visible only
- KTR Project visible only
- KTR Project and other developments visible

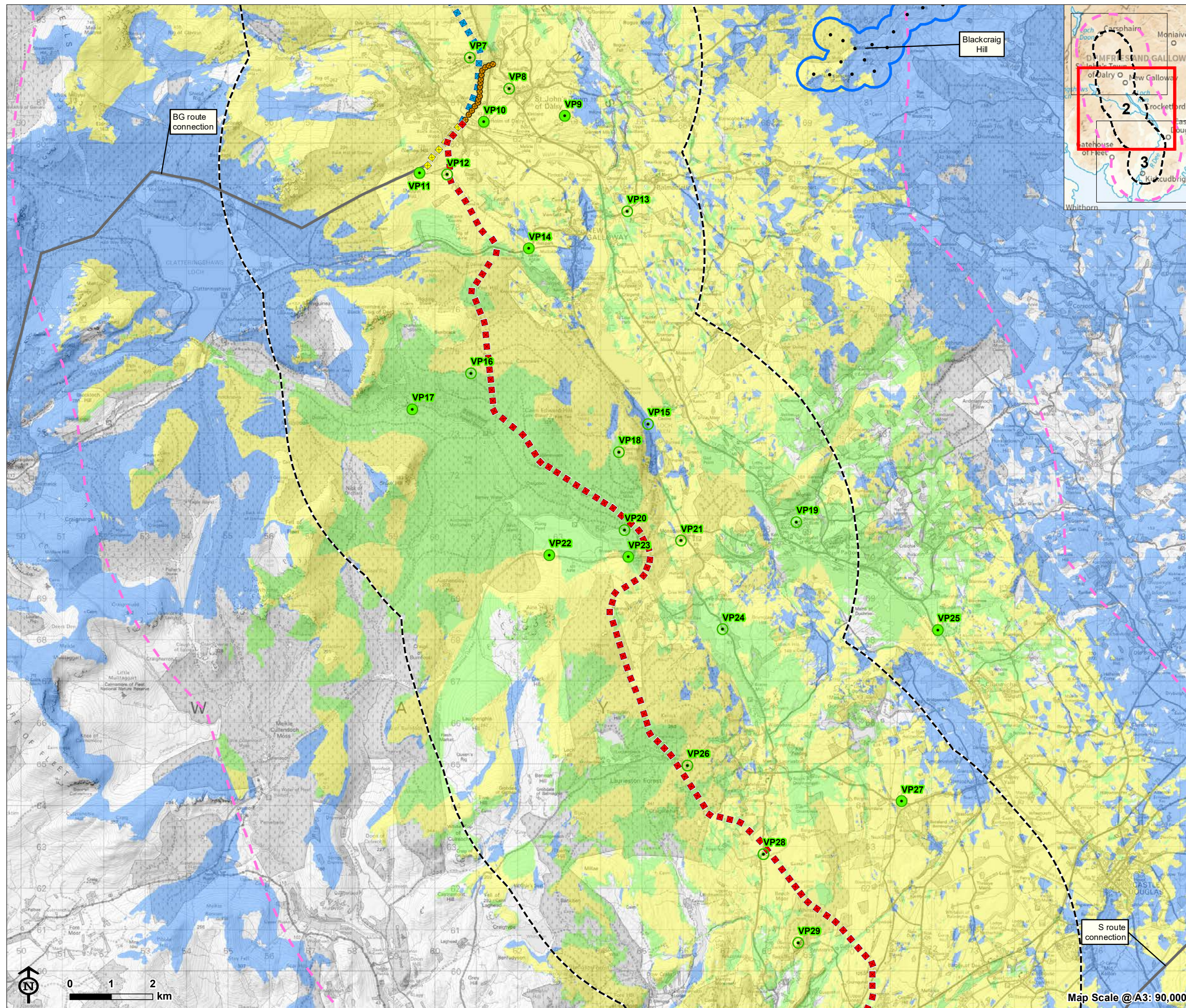
### Developments included in CZTV

- Existing network
- Wind farm - operational
  - Turbine
- Viewpoint
  - 1. Layby on A713 near Polquharity
  - 2. Dundough at access to Polmaddy
  - 3. Polmaddy settlement
  - 4. Footbridge access to Kendoon
  - 5. B7000 west of Glenhoul Hill
  - 6. Layby on A713 near Knocknalling Wood
  - 7. Southern Upland Way near Waterside Hill
  - 8. Southern Upland Way near St John's Town of Dalry
  - 9. Mulloch Hill
  - 10. A762 north of Glenlee
  - 12. Core Path 516 south-west of Glenlee
  - 13. A712 west of Balmaclellan
  - 14. A712, The Queen's Way

**Note:** See Appendix 7.2 for detailed notes on data and information contained on figure.







## KTR Project EIA Report

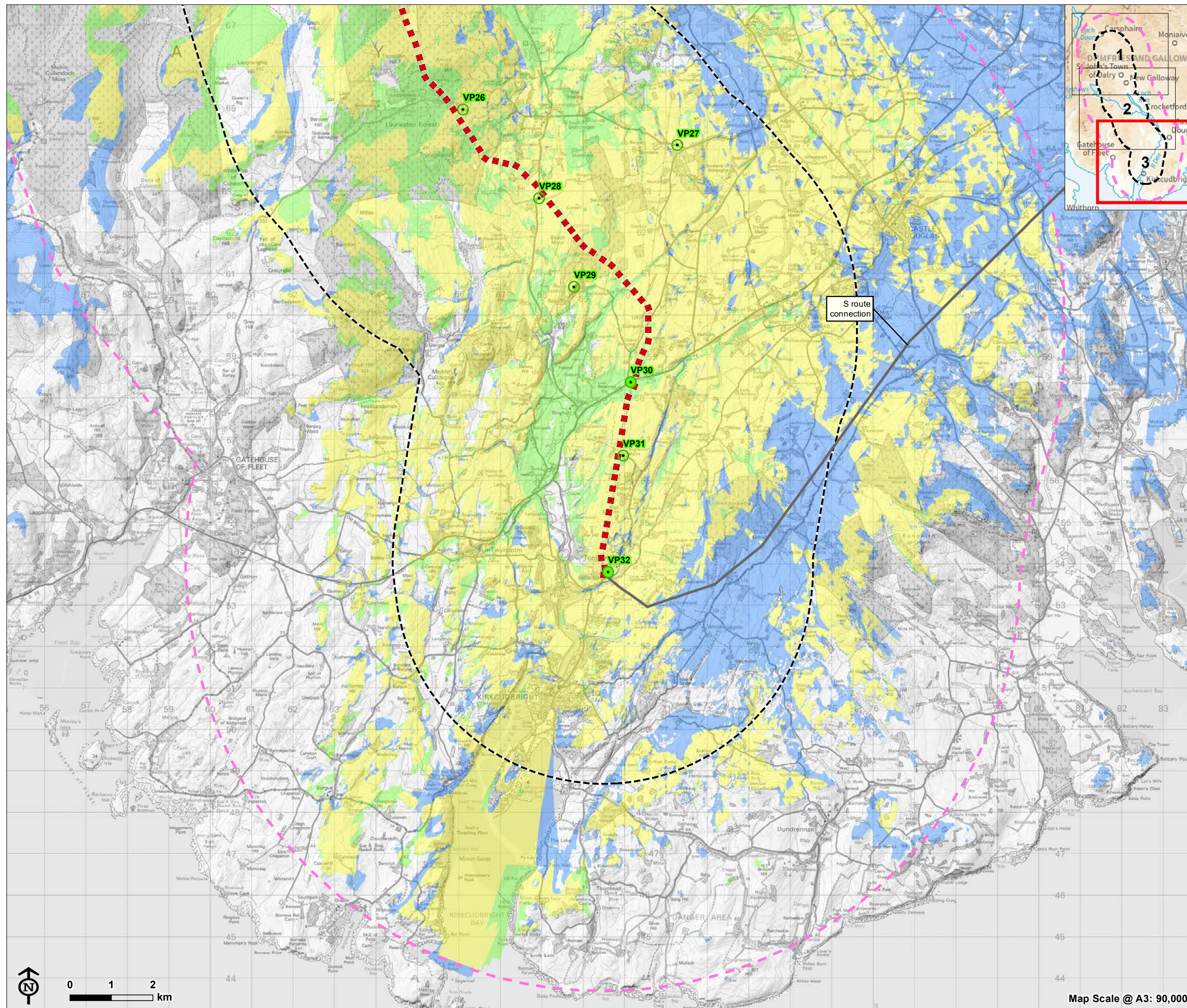
**Figure 7.18.2: KTR Project and Operational Overhead Lines and Wind Farms Cumulative Zone of Theoretical Visibility (CZTV) - Bare Earth**

- Overhead line infrastructure**
- Polquharity to Glenlee via Kendoon (steel lattice tower)
  - Earlstoun to Glenlee (wood pole)
  - Glenlee to Tongland (steel lattice tower)
  - BG route deviation (steel lattice tower)
  - 5km radius study area from KTR connections
  - 10km radius study area from KTR connections
- KTR and Operational Developments CZTV**
- Other developments visible only
  - KTR Project visible only
  - KTR Project and other developments visible
- Developments included in CZTV**
- Existing network
  - Wind farm - operational
  - Turbine
  - Viewpoint
  - 7. Southern Upland Way near Waterside Hill
  - 8. Southern Upland Way near St John's Town of Dalry
  - 9. Mulloch Hill
  - 10. A762 north of Glenlee
  - 12. Core Path 516 south-west of Glenlee
  - 13. A712 west of Balmaclellan
  - 14. A712, The Queen's Way
  - 15. A762 west of Loch Ken
  - 16. Core path near Tannoch Flow
  - 17. The Otter Pool
  - 18. Core Path 177 near Bennan Moss
  - 19. Promoted viewpoint near Parton/Airds House
  - 20. Raiders' Road, north of Stroan Loch
  - 21. Mossdale
  - 22. Core Path 485 Mossdale to Gatehouse Station Railway Walk
  - 23. Stroan Viaduct
  - 24. A762 east of Woodhall Loch
  - 25. A713 near Parton Mill Bridge
  - 26. Kennick Burn picnic area
  - 27. B795 east of Laurieston
  - 28. A762 south of Laurieston
  - 29. Barstobrick Hill (Neilson's Monument)

**Note:** See Appendix 7.2 for detailed notes on data and information contained on figure.







## KTR Project EIA Report

**Figure 7.18.3: KTR Project and Operational Overhead Lines and Wind Farms Cumulative Zone of Theoretical Visibility (CZTV) - Bare Earth**

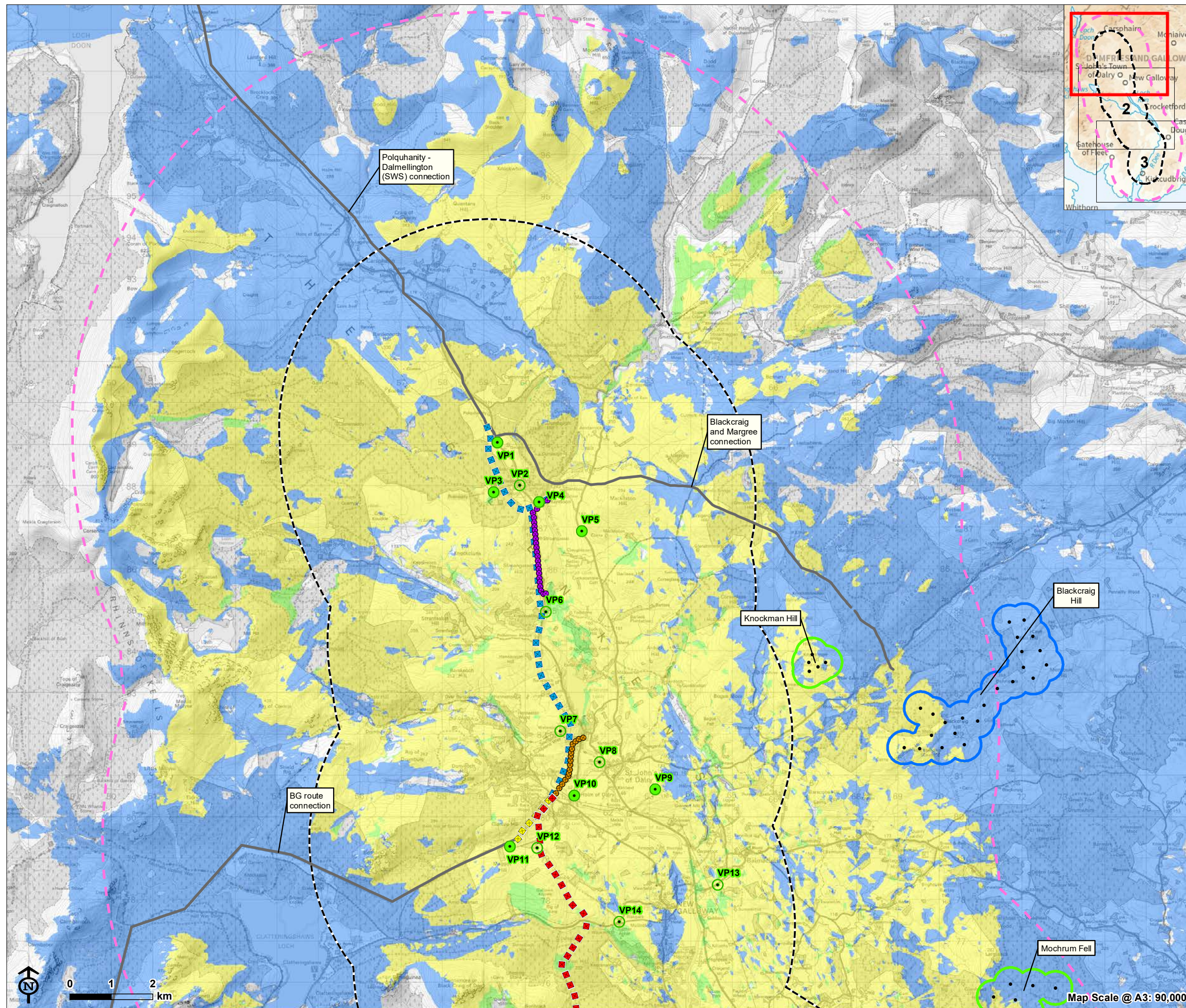
- Overhead line infrastructure**
- Glenlee to Tongland (steel lattice tower)
  - 5km radius study area from KTR connections
  - 10km radius study area from KTR connections
- KTR and Operational Developments CZTV**
- Other developments visible only
  - KTR Project visible only
  - KTR Project and other developments visible
- Developments included in CZTV**
- Existing network
  - Viewpoint
    - 26. Kennick Burn picnic area
    - 27. B795 east of Laurieston
    - 28. A762 south of Laurieston
    - 29. Barstobrick Hill (Neilson's Monument)
    - 30. A75 at junction with unclassified road
    - 31. Unclassified road (U43S) near Argrennan Mains
    - 32. A711 north of Tongland substation

**Note:** See Appendix 7.2 for detailed notes on data and information contained on figure.



Map Scale @ A3: 90,000





## KTR Project EIA Report

**Figure 7.19.1: KTR Project and Operational and Consented Overhead Lines and Wind Farms Cumulative Zone of Theoretical Visibility (CZTV) - Bare Earth**

### Overhead line infrastructure

- Polquharity to Glenlee via Kendon (steel lattice tower)
- Carsfad to Kendon (wood pole)
- Earlstoun to Glenlee (wood pole)
- Glenlee to Tongland (steel lattice tower)
- BG route deviation (steel lattice tower)

5km radius study area from KTR connections

10km radius study area from KTR connections

### KTR and Operational and Consented Developments CZTV

- Other developments visible only
- KTR Project visible only
- KTR Project and other developments visible

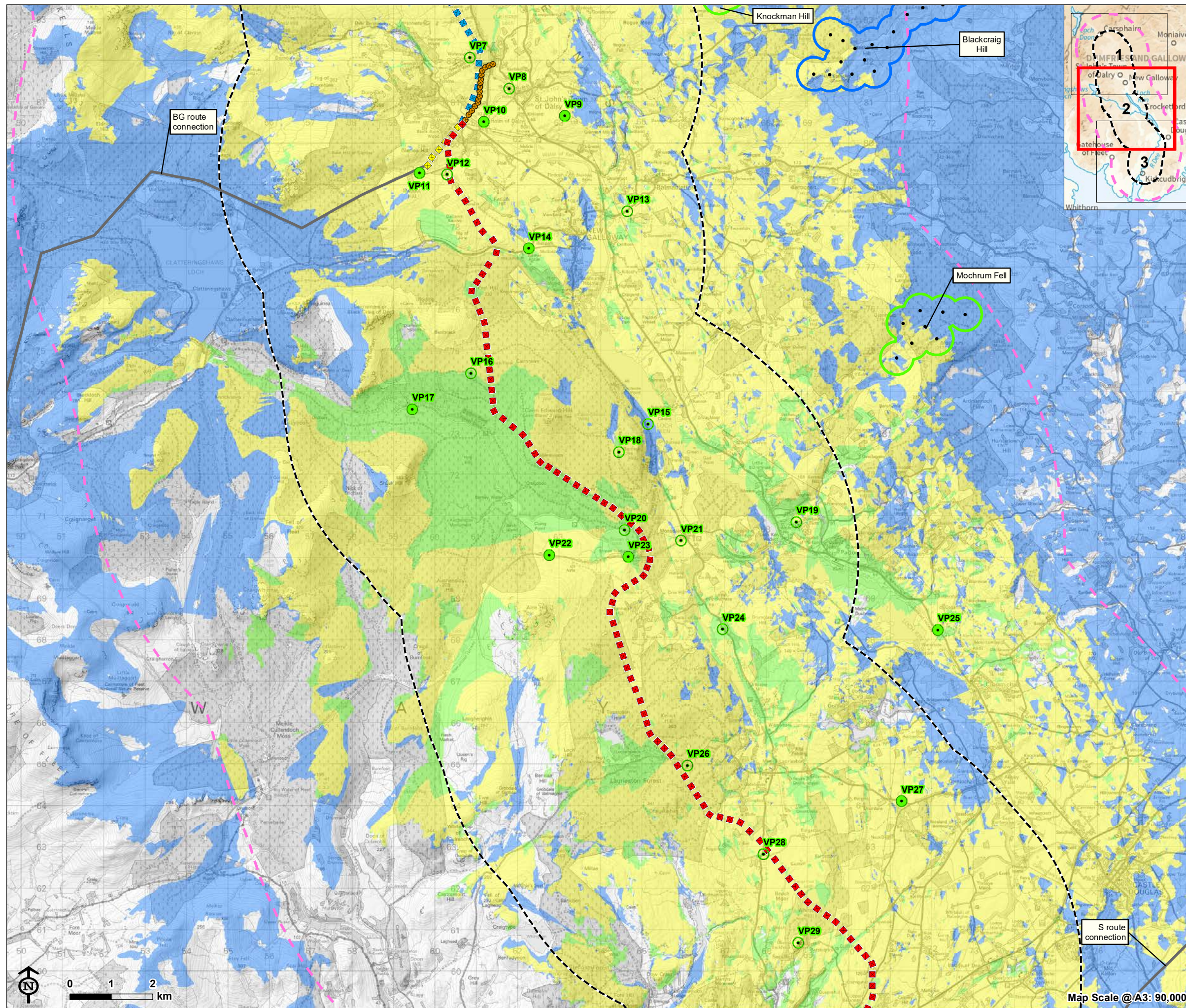
### Developments included in CZTV

- Existing network
- Wind farm - operational
- Wind farm - consented
- Turbine
- Viewpoint
  - Layby on A713 near Polquharity
  - Dundeugh at access to Polmaddy
  - Polmaddy settlement
  - Footbridge access to Kendon
  - B7000 west of Glenhoull Hill
  - Layby on A713 near Knocknalling Wood
  - Southern Upland Way near Waterside Hill
  - Southern Upland Way near St John's Town of Dalry
  - Mulloch Hill
  - A762 north of Glenlee
  - Core Path 516 south-west of Glenlee
  - A712 west of Balmaclellan
  - A712, The Queen's Way

**Note:** See Appendix 7.2 for detailed notes on data and information contained on figure.







## KTR Project EIA Report

**Figure 7.19.2: KTR Project and Operational and Consented Overhead Lines and Wind Farms Cumulative Zone of Theoretical Visibility (CZTV) - Bare Earth**

### Overhead line infrastructure

- Polquhany to Glenlee via Kendoon (steel lattice tower)
- Earlstoun to Glenlee (wood pole)
- Glenlee to Tongland (steel lattice tower)
- BG route deviation (steel lattice tower)
- 5km radius study area from KTR connections
- 10km radius study area from KTR connections

### KTR and Operational and Consented Developments CZTV

- Other developments visible only
- KTR Project visible only
- KTR Project and other developments visible

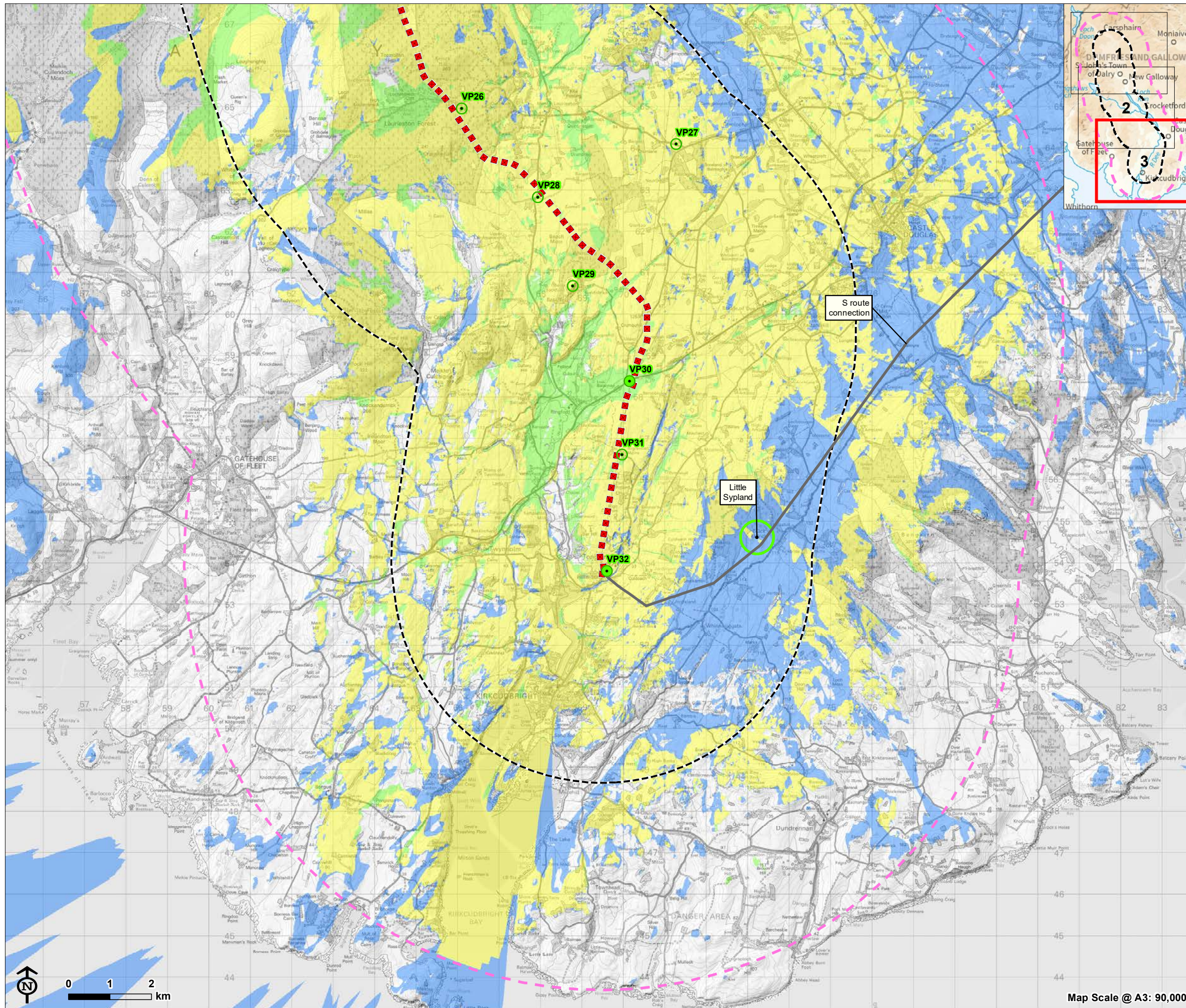
### Developments included in CZTV

- Existing network
- Wind farm - operational
- Wind farm - consented
- Turbine
- Viewpoint
- 7. Southern Upland Way near Waterside Hill
- 8. Southern Upland Way near St John's Town of Dalry
- 9. Mulloch Hill
- 10. A762 north of Glenlee
- 12. Core Path 516 south-west of Glenlee
- 13. A712 west of Balmaclellan
- 14. A712, The Queen's Way
- 15. A762 west of Loch Ken
- 16. Core path near Tannoch Flow
- 17. The Otter Pool
- 18. Core Path 177 near Bannan Moss
- 19. Promoted viewpoint near Parton/Airds House
- 20. Raiders' Road, north of Stroan Loch
- 21. Mossdale
- 22. Core Path 485 Mossdale to Gatehouse Station Railway Walk
- 23. Stroan Viaduct
- 24. A762 east of Woodhall Loch
- 25. A713 near Parton Mill Bridge
- 26. Kennick Burn picnic area
- 27. B795 east of Laurieston
- 28. A762 south of Laurieston
- 29. Barstobrick Hill (Neilson's Monument)

**Note:** See Appendix 7.2 for detailed notes on data and information contained on figure.







## KTR Project EIA Report

**Figure 7.19.3: KTR Project and Operational and Consented Overhead Lines and Wind Farms Cumulative Zone of Theoretical Visibility (CZTV) - Bare Earth**

### Overhead line infrastructure

- Glenlee to Tongland (steel lattice tower)
- 5km radius study area from KTR connections
- 10km radius study area from KTR connections

### KTR and Operational and Consented Developments CZTV

- Other developments visible only
- KTR Project visible only
- KTR Project and other developments visible

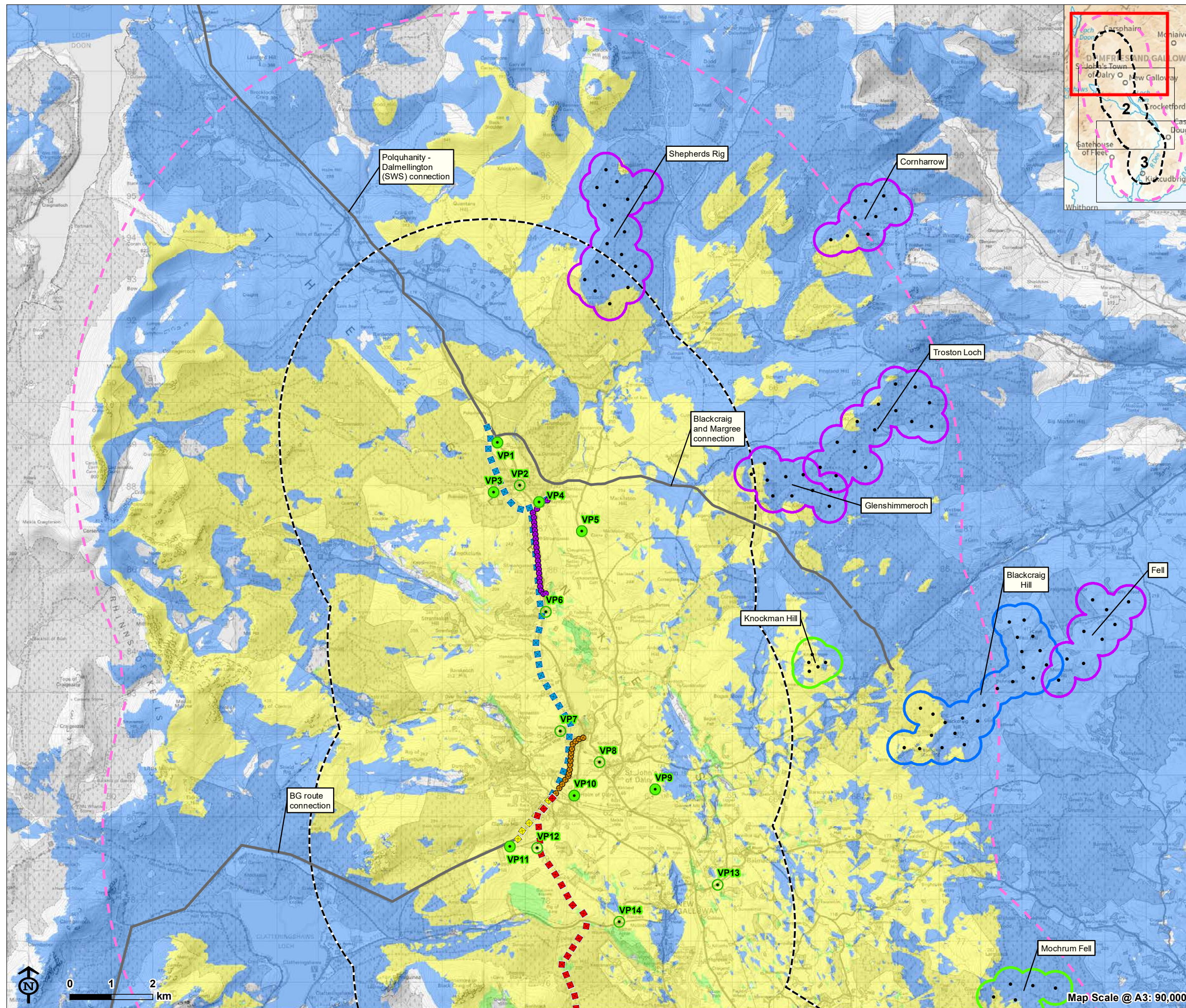
### Developments included in CZTV

- Existing network
- Wind farm - consented
  - Turbine
- Viewpoint
  - 26. Kennick Burn picnic area
  - 27. B795 east of Laurieston
  - 28. A762 south of Laurieston
  - 29. Barstobrick Hill (Neilson's Monument)
  - 30. A75 at junction with unclassified road
  - 31. Unclassified road (U43S) near Argrennan Mains
  - 32. A711 north of Tongland substation

**Note:** See Appendix 7.2 for detailed notes on data and information contained on figure.







## KTR Project EIA Report

**Figure 7.20.1: KTR Project and Operational, Consented and Proposed Overhead Lines and Wind Farms Cumulative Zone of Theoretical Visibility (CZTV) - Bare Earth**

### Overhead line infrastructure

- Polquharity to Glenlee via Kendoon (steel lattice tower)
- Carsfad to Kendoon (wood pole)
- Earlstoun to Glenlee (wood pole)
- Glenlee to Tongland (steel lattice tower)
- BG route deviation (steel lattice tower)

- 5km radius study area from KTR connections
- 10km radius study area from KTR connections

### KTR and Operational, Consented and Proposed Developments CZTV

- Other developments visible only
- KTR Project visible only
- KTR Project and other developments visible

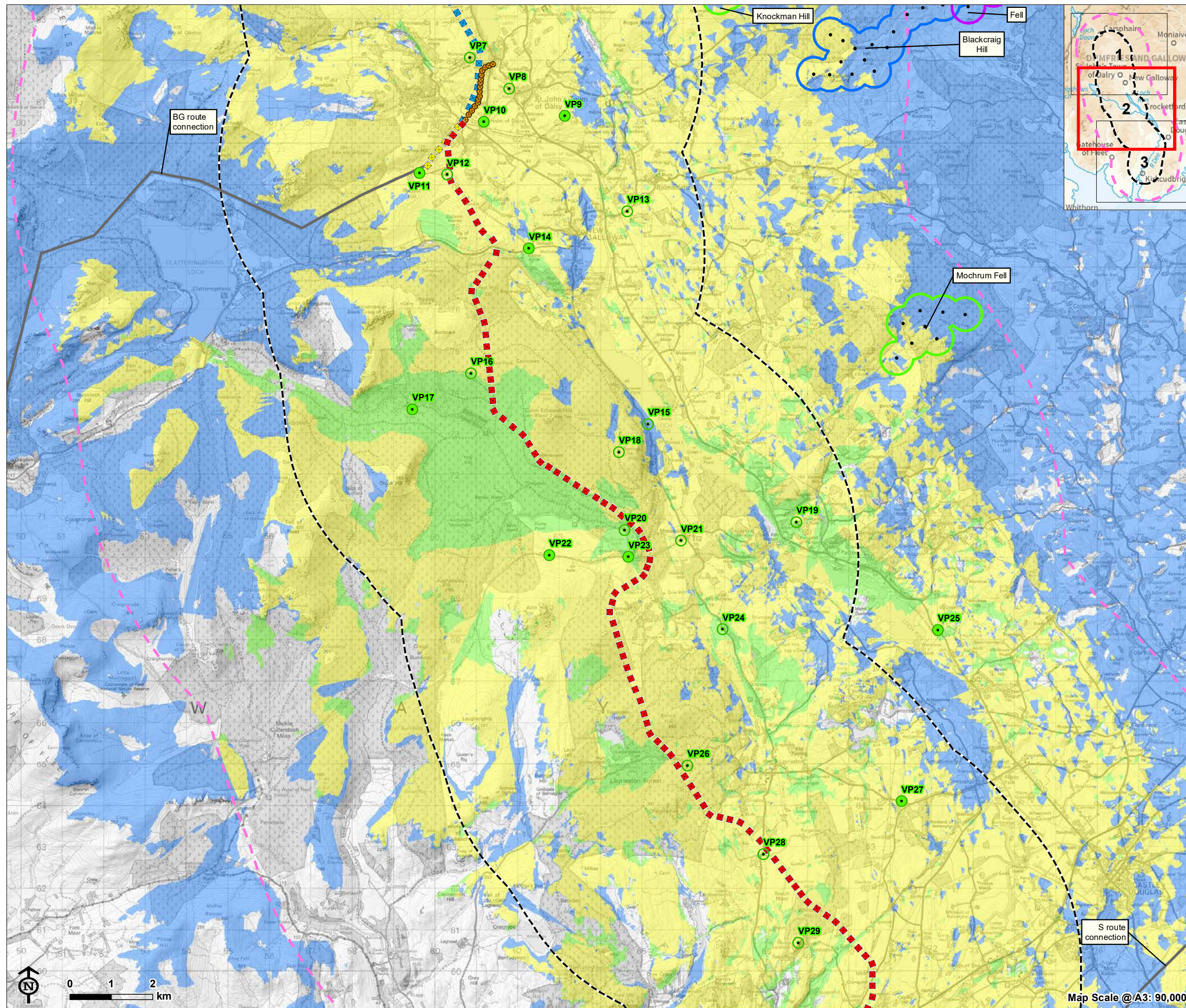
### Developments included in CZTV

- Existing network
- Wind farm - operational
- Wind farm - consented
- Wind farm - application submitted
- Turbine
- Viewpoint
  - 1. Layby on A713 near Polquharity
  - 2. Dundough at access to Polmaddy
  - 3. Polmaddy settlement
  - 4. Footbridge access to Kendoon
  - 5. B7000 west of Glenhoul Hill
  - 6. Layby on A713 near Knocknalling Wood
  - 7. Southern Upland Way near Waterside Hill
  - 8. Southern Upland Way near St John's Town of Dalry
  - 9. Mulloch Hill
  - 10. A762 north of Glenlee
  - 12. Core Path 516 south-west of Glenlee
  - 13. A712 west of Balmaclellan
  - 14. A712, The Queen's Way

**Note:** See Appendix 7.2 for detailed notes on data and information contained on figure.







## KTR Project EIA Report

**Figure 7.20.2: KTR Project and Operational, Consented and Proposed Overhead Lines and Wind Farms Cumulative Zone of Theoretical Visibility (CZTV) - Bare Earth**

### Overhead line infrastructure

- Polquharity to Glenlee via Kendoon (steel lattice tower)
- Earlstoun to Glenlee (wood pole)
- Glenlee to Tongland (steel lattice tower)
- BG route deviation (steel lattice tower)
- 5km radius study area from KTR connections
- 10km radius study area from KTR connections

### KTR and Operational, Consented and Proposed Developments CZTV

- Other developments visible only
- KTR Project visible only
- KTR Project and other developments visible

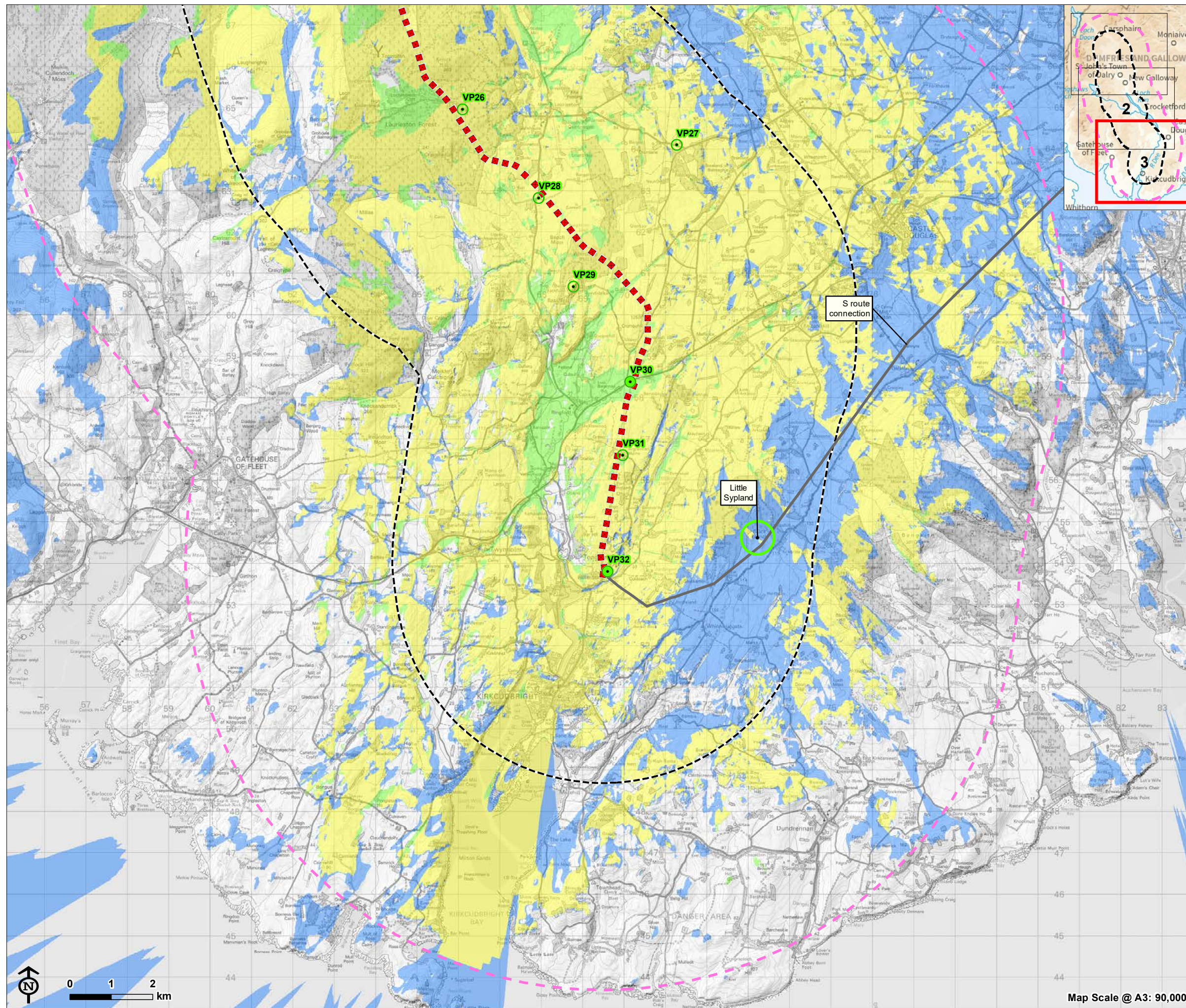
### Developments included in CZTV

- Existing network
- Wind farm - operational
- Wind farm - consented
- Wind farm - application submitted
- Turbine
- Viewpoint
- 7. Southern Upland Way near Waterside Hill
- 8. Southern Upland Way near St John's Town of Dalry
- 9. Mulloch Hill
- 10. A762 north of Glenlee
- 12. Core Path 516 south-west of Glenlee
- 13. A712 west of Balmaclellan
- 14. A712, The Queen's Way
- 15. A762 west of Loch Ken
- 16. Core path near Tannoch Flow
- 17. The Otter Pool
- 18. Core Path 177 near Bennan Moss
- 19. Promoted viewpoint near Parton/Airds House
- 20. Raiders' Road, north of Stroan Loch
- 21. Mossdale
- 22. Core Path 485 Mossdale to Gatehouse Station Railway Walk
- 23. Stroan Viaduct
- 24. A762 east of Woodhall Loch
- 25. A713 near Parton Mill Bridge
- 26. Kennick Burn picnic area
- 27. B795 east of Laurieston
- 28. A762 south of Laurieston
- 29. Barstobrick Hill (Neilson's Monument)

**Note:** See Appendix 7.2 for detailed notes on data and information contained on figure.







## KTR Project EIA Report

**Figure 7.20.3: KTR Project and Operational, Consented and Proposed Overhead Lines and Wind Farms Cumulative Zone of Theoretical Visibility (CZTV) - Bare Earth**

- Overhead line infrastructure**
- Glenlee to Tongland (steel lattice tower)
  - 5km radius study area from KTR connections
  - 10km radius study area from KTR connections

- KTR and Operational, Consented and Proposed Developments CZTV**
- Other developments visible only
  - KTR Project visible only
  - KTR Project and other developments visible

- Developments included in CZTV**
- Existing network
  - Wind farm - consented
    - Turbine
  - Viewpoint
    - 26. Kennick Burn picnic area
    - 27. B795 east of Laurieston
    - 28. A762 south of Laurieston
    - 29. Barstobrick Hill (Neilson's Monument)
    - 30. A75 at junction with unclassified road
    - 31. Unclassified road (U43S) near Argrennan Mains
    - 32. A711 north of Tongland substation

**Note:** See Appendix 7.2 for detailed notes on data and information contained on figure.



Map Scale @ A3: 90,000