



**SP ENERGY
NETWORKS**

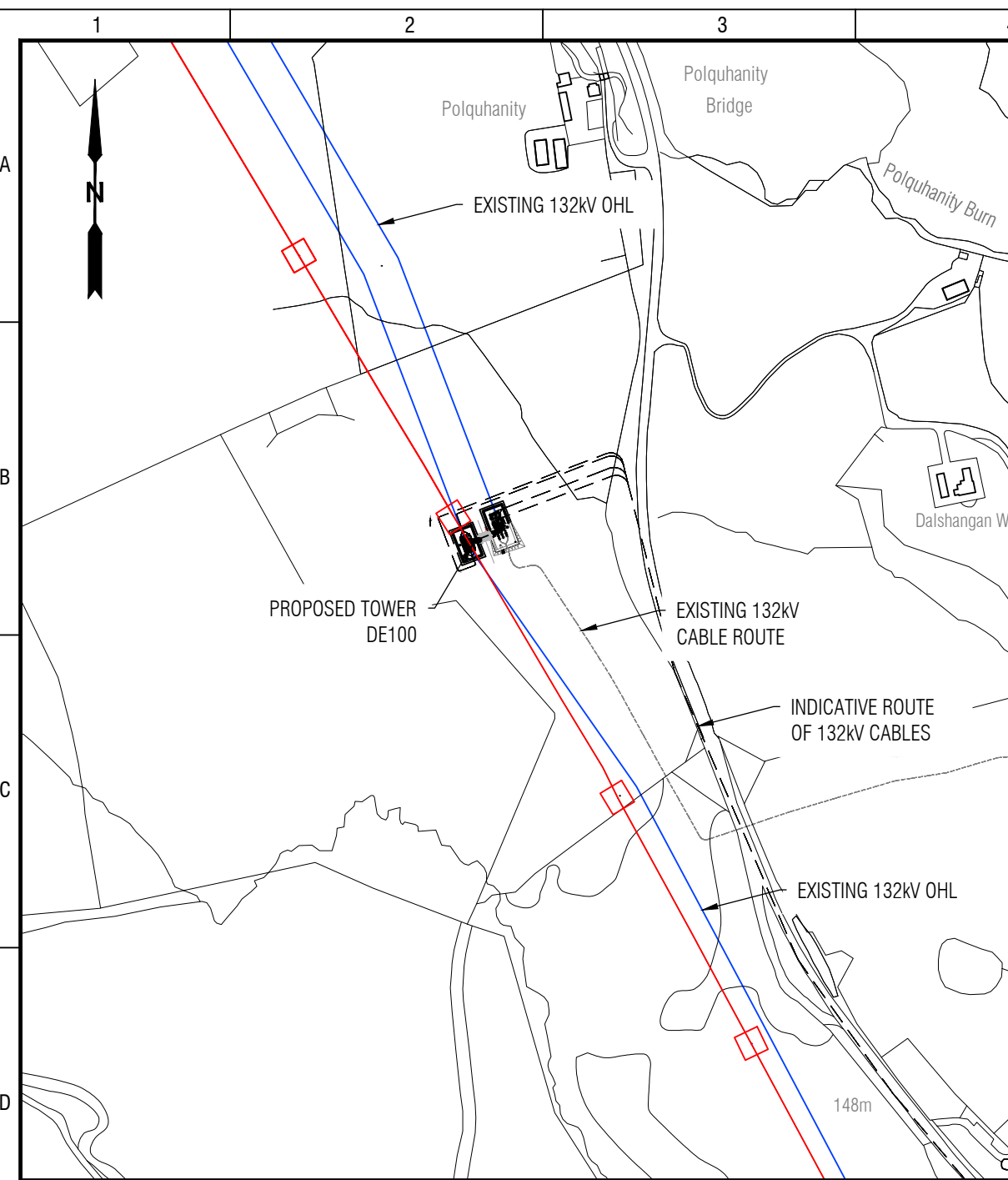
The Kendoon to Tongland 132kV Reinforcement Project

**Underground cable study
summary report**

Figure 3

July 2020

Figure 3.1: Option 1 - tower DE100 proposed double circuit sealing end compound extension

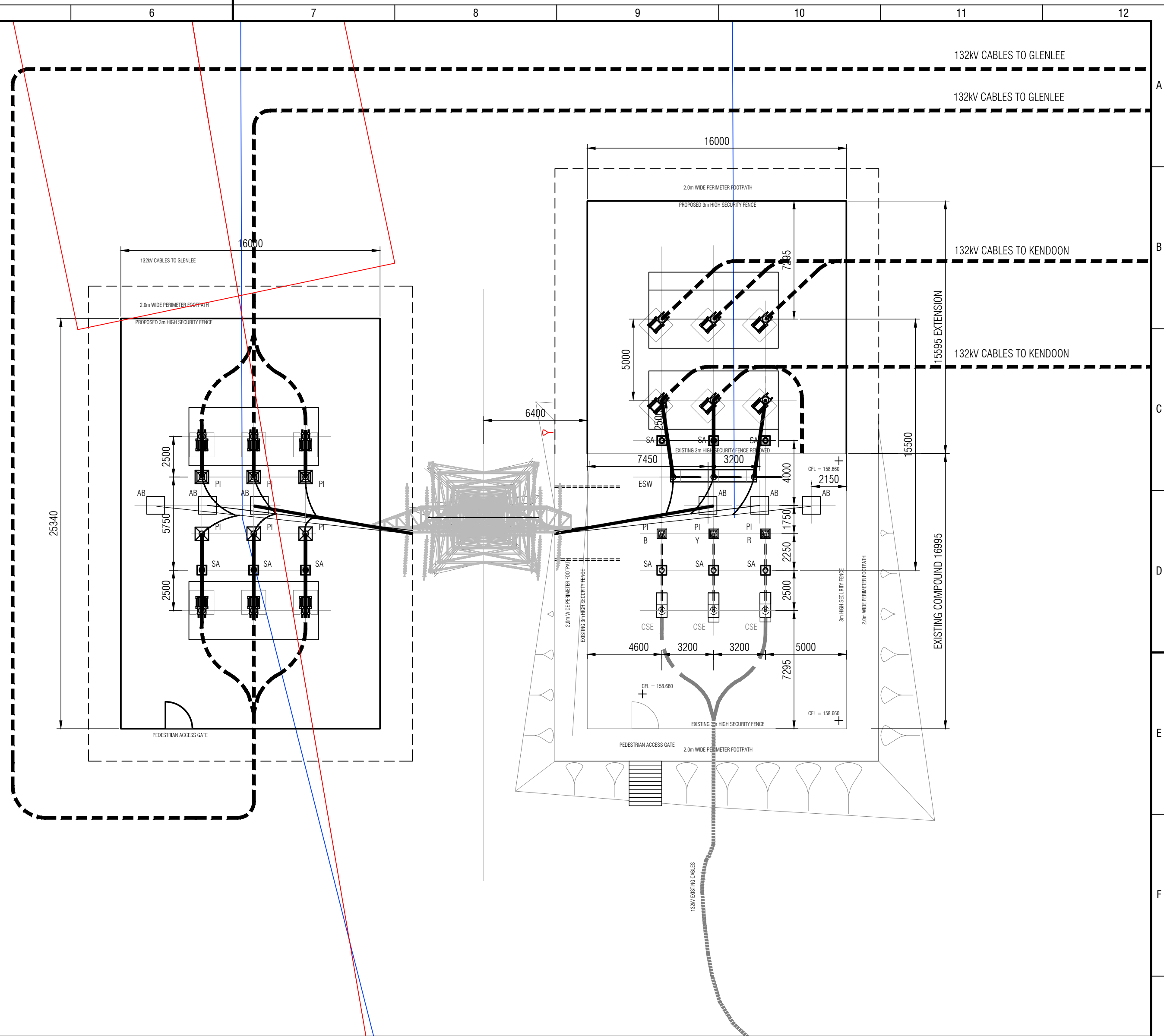


LOCATION PLAN OF TOWER DE100

SCALE 1:5000

ASSOCIATED DRAWINGS

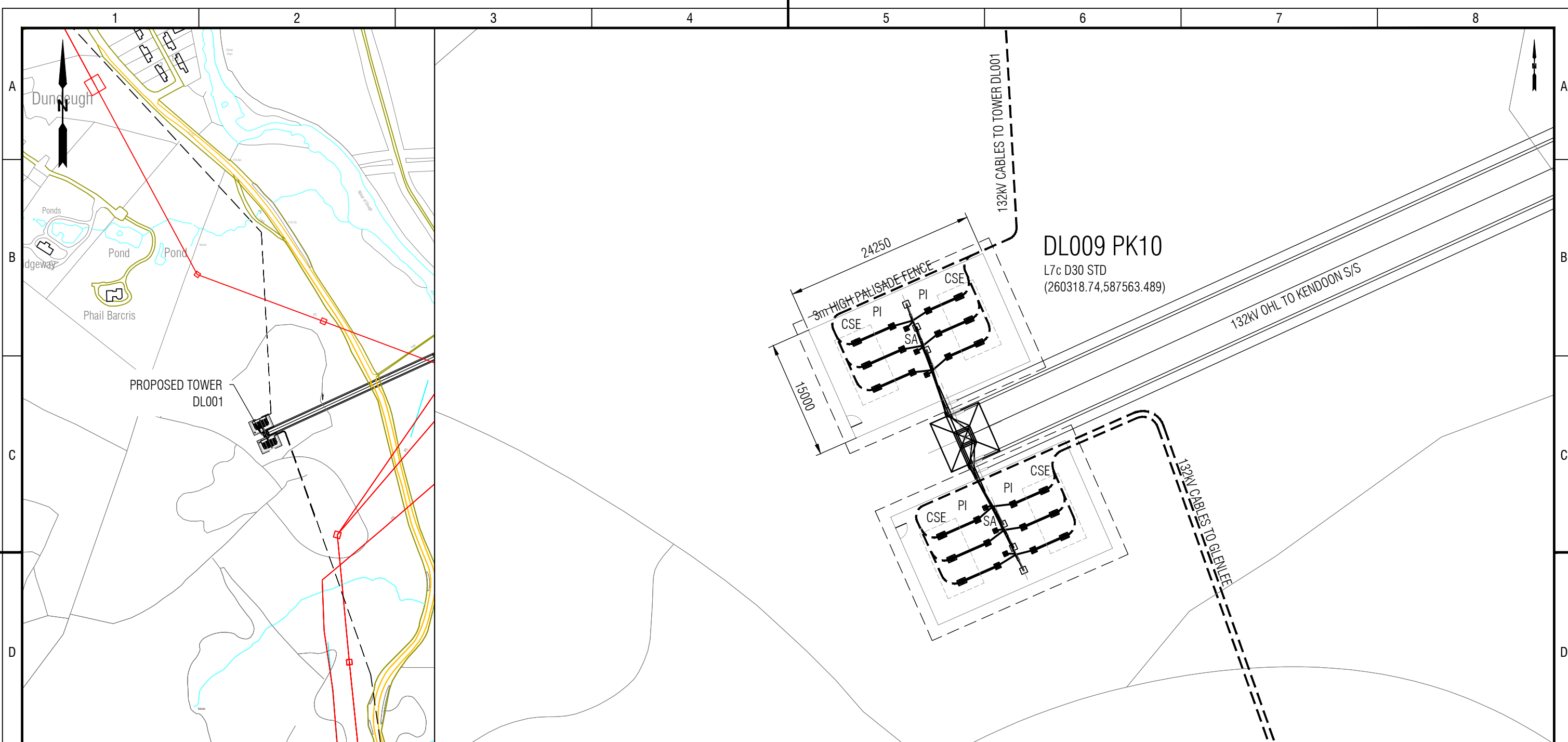
- 1C2B-1-10HL-DA-SPENEL-1001 SCHEMATIC DIAGRAM OF PROPOSED CABLING BETWEEN POLQUHANITY TO GLENLEE
- 1C2B-1-10HL-DO-SPENEL-1003 TOWERDE100
- 1C2B-1-10HL-DO-SPENEL-1004 TOWERDL009



0	30/07/2019	SM	JFM	SJ	FIRST ISSUE
Rev.	Date	Drawn	Reviewed	Approved	Reason / Description of changes.
			Status Stamp:		Project: KENDOOON TO TONGLAND 132KV REINFORCEMENT TORI 221
			Status Stamp:		Location: KENDOOON
			Status Stamp:		Drg. Title: OPTION 1 TOWER DE100 PROPOSED DOUBLE CIRCUIT SEALING END COMPOUND EXTENSION
			Drawn 	Rev'd	Apprd
			Drg. No.: 1C2B-1-00HI-DO-SPENEL-1003		Sheet: Next: 0
			SPEN Ref. No.:		Scale: 1:200 Size: A2

All rights reserved. Total or partial reproduction of this drawing without authorisation of the proprietor is prohibited.

Figure 3.2: Tower DL009 proposed double circuit sealing end compound



LOCATION PLAN OF TOWER DL009
SCALE 1:5000

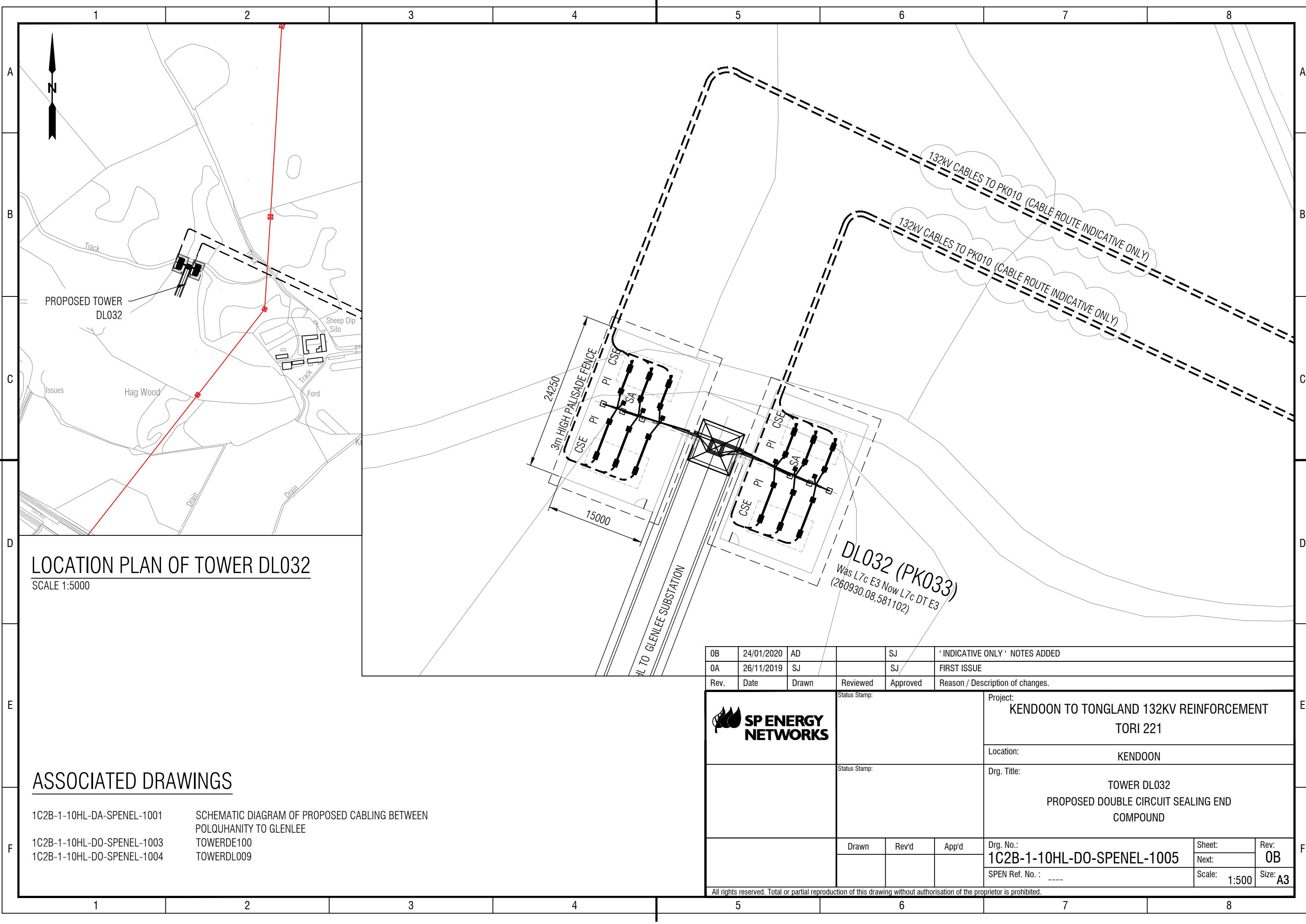
ASSOCIATED DRAWINGS

- 1C2B-1-10HL-DA-SPENEL-1001 SCHEMATIC DIAGRAM OF PROPOSED CABLING BETWEEN POLQUHANITY TO GLENLEE
- 1C2B-1-10HL-DO-SPENEL-1003 TOWERDE100
- 1C2B-1-10HL-DO-SPENEL-1004 TOWERDL009

Rev.	Date	Drawn	Reviewed	Approved	Reason / Description of changes.
0	30/07/2019	SM	JFM	SJ	FIRST ISSUE
			Status Stamp:		Project: KENDOON TO TONGLAND 132KV REINFORCEMENT TORI 221 Location: KENDOON
			Status Stamp:		Drg. Title: TOWER DL009 PROPOSED DOUBLE CIRCUIT SEALING END COMPOUND
			Drawn:	Rev'd:	App'd:
			Drg. No.: 1C2B-1-00HI-DO-SPENEL-1004 SPEN Ref. No.:		Sheet: 0 Next: 0 Scale: 1:500 Size: A3

All rights reserved. Total or partial reproduction of this drawing without authorisation of the proprietor is prohibited.

Figure 3.3: Tower DL032 proposed double circuit sealing end compound



LOCATION PLAN OF TOWER DL032
SCALE 1:5000

ASSOCIATED DRAWINGS

- 1C2B-1-10HL-DA-SPENEL-1001 SCHEMATIC DIAGRAM OF PROPOSED CABLING BETWEEN POLQUHANITY TO GLENLEE
- 1C2B-1-10HL-DO-SPENEL-1003 TOWERDE100
- 1C2B-1-10HL-DO-SPENEL-1004 TOWERDL009

OB	24/01/2020	AD		SJ	'INDICATIVE ONLY' NOTES ADDED
0A	26/11/2019	SJ		SJ	FIRST ISSUE
Rev.	Date	Drawn	Reviewed	Approved	Reason / Description of changes.
		Status Stamp:		Project: KENDOON TO TONGLAND 132KV REINFORCEMENT TORI 221	
		Status Stamp:		Location: KENDOON	
		Status Stamp:		Drg. Title: TOWER DL032 PROPOSED DOUBLE CIRCUIT SEALING END COMPOUND	
		Drawn	Rev'd	App'd	Drg. No.:
					1C2B-1-10HL-DO-SPENEL-1005
					Sheet:
					Next:
					Scale: 1:500
					Size: A3
					Rev: 0B
					SPEN Ref. No. : ----

All rights reserved. Total or partial reproduction of this drawing without authorisation of the proprietor is prohibited.