

# **Holm Hill Substation**

## **Environmental Appraisal**

## **Pre- Application Consultation Report**

# Contents

Page

## PRE-APPLICATION CONSULTATION REPORT

List Of Abbreviations And Terminology .....	i
1 Introduction .....	1-1
1.1 Purpose of this document .....	1-1
1.2 Background to the consultation .....	1-1
2 Project description .....	2-1
2.2 Design elements .....	2-1
3 Consultation on the Proposed Development .....	3-1
3.2 Consultation approach .....	3-1
3.3 Consultation materials and channels for promotion .....	3-1
3.4 Raising awareness .....	3-2
3.5 Consultation events .....	3-4
3.6 Responding to the consultation .....	3-4
4 Responses to consultation .....	4-1
4.2 Response analysis and methodology .....	4-1
4.3 Feedback on the Proposed Development .....	4-1
5 Next steps .....	5-1
5.1 Design development .....	5-1
5.2 Planning Application .....	5-2
Annex A: Consultation response summary .....	A
Annex B: Consultation materials for first consultation event .....	F
Annex C: Consultation materials for second consultation event .....	G
Annex D: Information leaflet .....	H
Annex E: Letter to stakeholders for first consultation .....	I
Annex F: Letter to stakeholders for second consultation .....	J
Annex G: Two public notices .....	K
Annex H: Feedback form .....	L

## List Of Abbreviations And Terminology

Term	Definition
BTO	British Trust for Ornithology Scotland
CCTV	Closed-Circuit Television
DE Route	The 132 kV overhead line which the Lorg Wind Farms would connect with
EA	Environmental Appraisal
Electricity Act	The Electricity Act 1989
HV	High Voltage
JNCC	Joint Nature Conservation Committee
kV	Kilo-volt capacity of an electricity power line
LV	Low Voltage
m	metres
OFCOM	The Office of Communications
OFWAT	Water Services Regulation Authority
OHL	Overhead line: an electric line in the open air and above ground level
PWS	Private Water Supply
PWSRA	Private Water Supply Risk Assessment
RLB	Red Line Boundary
RAF	Royal Air Force
RSPB	Royal Society for the Protection of Birds
SOAN	Scottish Outdoor Access Network
The Applicant	SP Energy Networks
SGT	Super grid transformers
SuDS	Sustainable drainage system
UGC	Underground Cabling
WTW	Water Treatment Works

# 1 INTRODUCTION

## 1.1 Purpose of this document

- 1.1.1 WSP has prepared this document on behalf of Scottish Power Transmission (SPT) (hereby referred to as 'The Applicant') to present the findings of the pre-application consultation on the proposed Holm Hill 132 kilovolt (kV) substation. The Applicant intends to apply for consent under Town and Country Planning (Scotland) Planning Act 1997.
- 1.1.2 The pre-application consultation for the Proposed Development (defined within **Chapter 2 – Proposed Development** of the Environmental Appraisal (EA)) was undertaken during August – September 2024. The first event was held on 28 August 2024 and provided an opportunity for the public and key stakeholders to find out more about the Proposed Development, ask questions and provide feedback. Following the period for receipt of comments, a second event was held on 13 November 2024, where The Applicant responded to the feedback received.
- 1.1.3 Specifically, the purpose of this report is to:
- document the consultation process undertaken on the Proposed Development
  - detail responses received from statutory and non-statutory consultees and members of the public
  - discuss the key issues raised during the consultation; and
  - demonstrate how the comments received during the consultation have been taken into consideration.

## 1.2 Background to the consultation

- 1.2.1 The Applicant is applying to Dumfries and Galloway Council under the Town and Country Planning (Scotland) Act 1997<sup>1</sup> to construct and operate a new 132 kV substation. The Proposed Development would be located approximately 2.5 km to the north-west of Carsphairn and 7.5 km south-east of Dalmellington.
- 1.2.2 The Proposed Development is required to connect several Wind Farms - Lorg, Eucharhead, Shepherd's Rig, and Quantan's Hill (planned) - to the existing DE Route overhead transmission network. The proposed Overhead Line (OHL) for the Lorg Wind Farm was consulted on separately between April and June 2024. Further details are available here: [www.spenergynetworks.co.uk/pages/lorg\\_wind\\_farm.aspx](http://www.spenergynetworks.co.uk/pages/lorg_wind_farm.aspx)
- 1.2.3 The Applicant has a legal duty to provide grid connections to new electricity generating developments. As the licence holder, The Applicant is required under the Electricity Act 1989 "*to develop and maintain an efficient, co-ordinated and economical system of electricity transmission*"<sup>2</sup>.
- 1.2.4 As part of the routeing study for connecting Lorg Wind Farm to the existing DE route, several potential connection points were assessed. A sealing end compound and a link to a suitable tower on the DE route are required for the connection. The selected point at Holm Hill was primarily determined by the OHL route choice, considering mapped constraints, topography along the DE route, and feedback from the Lorg Wind Farm Grid Connection consultation.

---

<sup>1</sup> UK Government (1997). Town and Country Planning (Scotland) Act 1997. Available at: <https://www.legislation.gov.uk/ukpga/1997/8/contents>

<sup>2</sup> UK Government (1989). Electricity Act 1989. Available at: <https://www.legislation.gov.uk/ukpga/1989/29/contents>

## 2 PROJECT DESCRIPTION

2.1.1 As mentioned, the Proposed Development would be located approximately 2.5 km to the north-west of Carsphairn and 7.5 km south-east of Dalmellington. The Site is adjacent to the existing DE 132 kV OHL network, which would connect to the Proposed Development. The Proposed Development is accessed via the A713 road network, positioned to the south of The Site.

### 2.2 Design elements

2.2.1 Within substations, specialised equipment facilitates the transformation of high-voltage electricity from OHL to a lower voltage that can be transported through the distribution lines to supply homes and businesses.

2.2.2 The Proposed Developments' permanent operational infrastructure includes:

- a 132 Kilovolt (kV) substation platform (including a control building, earth switch, disconnectors, CVT, and four car parking spaces);
- Sealing End Compound;
- emergency back-up generator;
- ancillary works (lighting, Closed-Circuit Television (CCTV), security fencing);
- a proposed access route and bellmouth junction to the A713 (**Figure 2.1: Proposed Development**);
- an area for landscape planting (**Figure 6.1: Landscape Planting Plan**);
- SuDs, including two ponds, two culverts and a soakaway; and
- stone access roads.

## 3 CONSULTATION ON THE PROPOSED DEVELOPMENT

3.1.1 This Chapter outlines the approach to consultation, plus the materials, communication channels and events used during the 2024 consultation on the Proposed Development.

### 3.2 Consultation approach

- 3.2.1 Stakeholder and public involvement are an important component of the Scottish planning system. Legislation and government guidance aim to ensure that the public, local communities, statutory consultees, other representative groups and interested parties have an opportunity to have their views considered throughout the planning process.
- 3.2.2 The Applicant aims to ensure effective, inclusive and meaningful engagement with the public, local communities, statutory and other consultees and interested parties.
- 3.2.3 The pre-application consultation was held over a four-week period from 16 August – 13 September 2024. During this time, feedback was invited from landowners, members of the public and interested parties on the Proposed Development. On 28 August 2024, an event was held with the primary purpose of gathering feedback from the public on the Proposed Development.
- 3.2.4 The purpose of the consultation was to:
- explain the proposals in more detail and set out the timescales for the project;
  - answer any queries or questions from the public and consultees; and
  - allow members of the public to provide feedback and comments on the proposal.
- 3.2.5 A second event was held after the consultation period had ended on 13 November 2024. Its main purpose was to address the feedback received and explain how stakeholder input influenced the design.

### 3.3 Consultation materials and channels for promotion

- 3.3.1 A range of materials was produced for the consultation to help respondents understand the proposals and submit informed comments. The consultation was promoted via various communication channels to raise awareness and encourage participation.
- 3.3.2 Materials informed consultees and attendees at the public events that pre-application consultation does not remove the right, or the potential need, to comment on the final application once it is made to the planning authority.
- 3.3.3 Exhibition banners**
- 3.3.4 Banners were displayed at the first consultation event and included the location of the Proposed Development, indicative design, substation dimensions, key considerations, how the Proposed Development would be constructed and the project timeline, outlining the steps from the consultation through to commissioning and operation.
- 3.3.5 The banners included a photograph of the Proposed Development location, a diagram of the indicative design features and a map of the project Study Area. A copy of the exhibition boards displayed at the first event can be found in **Annex B: Consultation materials for first consultation event**.
- 3.3.6 Banners were updated for the second event to show how the feedback received during the consultation period had been considered, with updates to the design presented and key questions answered. A copy of the updated exhibition banners presented at the second event is provided in **Annex C: Consultation materials for second consultation event**.

### 3.3.7 Information leaflets

3.3.8 An information leaflet summarising the project - covering the Proposed Development's purpose, proposed location, and indicative design - was produced. It was available in physical format at the in-person event, and a copy is included in **Annex D: Information leaflet**.

### 3.3.9 Website

3.3.10 Information about the consultation was published on The Applicant's website:

[www.spenergynetworks.co.uk/pages/holm\\_hill\\_substation.aspx](http://www.spenergynetworks.co.uk/pages/holm_hill_substation.aspx) titled 'Holm Hill Substation'.

3.3.10 The webpage provided:

- an overview of the proposal;
- dates of the consultation;
- details about the in-person events, including dates, times and location;
- location, electrical layout and elevation plans; and
- contact details to provide feedback or for further queries

## 3.4 Raising awareness

### 3.4.1 Stakeholder letters

3.4.2 A letter was sent via email to more than 45 representative groups, including statutory consultees, non-statutory consultees and local community councils, as outlined in **Table 3.1**. The letter encouraged participation and provided an overview of the project, consultation event details and how to provide feedback or request further information.

3.4.3 The first letter was sent upon consultation launch on 16 August 2024. A copy of the letter can be found in **Annex E: Letter to stakeholders for first consultation**.

3.4.4 A second letter was issued on 5 November 2024 to invite stakeholders to the second event. A copy of the letter can be found in **Annex F: Letter to stakeholders for second consultation**.

### 3.4.5 Public notices

3.4.6 Advertisements were placed in the local newspaper, the Galloway Gazette, on 16 August 2024 and 1 November 2024, one and a half weeks in advance of each of the two in-person events.

3.4.7 The public notices contained:

- a description of the Proposed Development and its location;
- the date, time and location of the in-person event;
- an explanation of how and by when comments could be made ;
- contact details to contact the project team or request further information;
- link to the website; and
- a statement that comments made during the pre-application consultation are not representations to the planning authority and that comments can be made once the planning application has been submitted.

A copy of the two public notices can be found in **Annex G: Two public notices**.

**Table 3.1 List of consultees contacted directly during consultation on the Preferred Proposed Development Location**

Consultees	
<b>Statutory consultees</b>	
Scottish Government Energy Consents Unit	Scottish Environment Protection Agency
Dumfries and Galloway Council	NatureScot
Historic Environment Scotland	
<b>Non-statutory consultees</b>	
Association of Salmon Fishery Board	Marine Scotland
The Coal Authority	RSPB Scotland
Defence Infrastructure Organisation	Scottish Water
Forestry Commission Scotland	Scottish Wildlife Trust
<b>Other consultees</b>	
British Horse Society	NATS Safeguarding
British Trust for Ornithology Scotland (BTO)	Nuclear Safety Directorate (HSE)
BT	OFCOM
Civil Aviation Authority - Airspace	OFWAT
Dumfries and Galloway Badger Network	RAF
Dumfries and Galloway Bat Group	Ramblers Association (Scotland)
Dumfries and Galloway Raptor Study Group	Red Squirrels in Scotland (Southwest Scotland)
Galloway Fisheries Trust	Scottish Badgers
Game and Wildlife Conservation Trust	Scottish Outdoor Access Network (SOAN)
Garden History Association	Scottish Rights of Way and Access Society (ScotWays)
Health and Safety Executive	Sustrans Scotland
JNCC (for Geological Conservation Review)	The Crown Estate
John Muir Trust	The Woodland Trust
Mountaineering Council of Scotland	Transport Scotland
National Farmers Union	Visit Scotland
National Trust for Scotland	
<b>Local Community Councils</b>	
Carsphairn Community Council	Tynron Community Council
Dalry Community Council	Penpont Community Council
Glencairn Community Council	Sanquhar Community Council
<b>Landowners (contacted through letterbox drop)</b>	



## 3.5 Consultation events

### 3.5.1 Event 1

3.5.2 A consultation event was held in-person at Lagwyne Hall, Carsphairn, on 28 August 2024. Exhibition banners (**Section 3.3.3**) were displayed for attendees to find out more about the Proposed Development and ask any questions to a member of the Project Team. Visitors to the event were encouraged to submit their feedback via a feedback form (**Annex H: Feedback form**). Information leaflets were also available for attendees to take away (as described in **Section 3.3.6**).

### 3.5.3 Event 2

3.5.4 Following the consultation period, a second in-person event was held on 13 November 2024. The event was held in the same location at Lagwyne Hall, to explain how the views raised during the pre-application process have been considered. The event also provided a further opportunity for the local community to find out more about the Proposed Development, speak to a member of the Project Team and understand the next steps.

## 3.6 Responding to the consultation

### 3.6.1 Feedback form

3.6.2 Those who attended the first in-person event could submit their feedback via a feedback form. The form included three open-ended questions about the project and two questions inviting feedback on the event itself. A copy of the feedback form can be viewed in **Annex H: Feedback form**

### 3.6.3 Other responses

3.6.4 A dedicated mailbox ([holmhillss@spenergynetworks.co.uk](mailto:holmhillss@spenergynetworks.co.uk)) was used during the consultation period as a means for stakeholders and the local community to contact the Project Team, provide feedback on the Proposed Development and ask any questions.

3.6.5 In addition to the email address, respondents could send their comments via post to:

Scottish Power  
Holm Hill Project Manager  
55 Fullarton Drive  
Glasgow  
G32 8FA

## 4 RESPONSES TO CONSULTATION

4.1.1 This Chapter outlines the responses received to the consultation on the Proposed Development in August – September 2024. A total of 18 responses were received to the consultation. Five respondents submitted feedback via the feedback form available at the in-person consultation event, and 13 provided feedback via email.

### 4.2 Response analysis and methodology

4.2.1 All 18 written responses received via email and feedback form were logged to ensure all comments were collated.

4.2.2 These written responses were then analysed to categorise comments into topics. These topics were analysed quantitatively to identify the most frequently recurring areas of comment, so that responses could be provided.

### 4.3 Feedback on the Proposed Development

4.3.1 The number of comments made by the 18 respondents totalled 37 comments. These comments were categorised into eight topics.

4.3.2 The topics and corresponding responses from The Applicant are summarised in **Table 3.1**. The topics are listed in order of frequency, starting with the most frequently occurring topic. The number of comments corresponding to each topic is outlined in **Table 4.1**.

**Table 4.1: Topics raised during consultation**

Topic	Nature of comments received (including no. of comments each)	Total no. of comments	The Applicant response
Visual	<p>Request for visualisations (5 comments)</p> <p>Concern about visual impact (4 comments)</p> <p>Suggestion for landscaping to reduce visual impact (4 comments)</p> <p>Concern about light pollution (4 comments)</p>	17	<p>Following the first consultation event, The Applicant created a set of visualisations to provide an indicative view of what the Proposed Development could look like when operational. The Applicant also developed a proposed landscape scheme, including additional planting around The Site to help reduce the visibility of the Proposed Development from the road and surrounding area. These were presented at the second consultation event.</p> <p>Lighting shall be required during construction hours, particularly in winter months. Measures to control lighting would be included in the Construction Environmental Management Plan, including keeping lighting at a low level and directional, pointing to The Site. Only in the case of an emergency would lighting be required outside of working hours. (Usual construction hours are 8am – 5pm).</p>
Water	<p>Concern about impact on local water supply</p>	4	<p>Consultation with SEPA, Dumfries and Galloway Council and local residents has been undertaken to identify whether water abstractions could be affected during construction and operation of the Proposed Development.</p> <p>We have undertaken a Private Water Supply Risk Assessment (PWSRA) which would be included as an appendix to the EA that would provide details on these abstractions, and how they would be safeguarded. Should the results of the assessment indicate a risk to an abstraction or the associated delivery infrastructure, then site-specific mitigation measures would be proposed, and discussed and agreed with the PWS owner prior to construction.</p> <p>Good practice mitigation measures to be used during construction to minimise any adverse impacts on the water environment including streams and groundwater would also be detailed in EA. This would include the development of pollution prevention plans, as well as permanent sustainable drainage designed to avoid impacts on water quality or flooding.</p>

Topic	Nature of comments received (including no. of comments each)	Total no. of comments	The Applicant response
Consultation	Request for more information at public consultation event (2 comments) Suggestion for high-quality maps to be shown at consultation (1 comment) Request for consultation to be extended (1 comment)	4	Following the questions and feedback received at the first consultation event, The Applicant held a second consultation event providing additional information on the Proposed Development. This included providing visualisations of the Proposed Development, a proposed landscape plan and further details on construction lighting and steps to reduce potential noise.
Access	Query about access to substation (1 comment) Concern about impact on accessing forest and hill tracks, including reference to equestrians (1 comment) Suggestion for the access to be from forest tracks not the A-road (1 comment)	3	The planning application would be accompanied by a framework Construction Traffic Management Plan which the Principal Contactor would adopt and develop to minimise disruption to the local road network and other road users. Once in operation, The Site would be unmanned and there would only be infrequent visits for maintenance purposes.
Noise	Concern about noise, during operation and construction	2	Dumfries and Galloway Council's Environmental Health Department has been consulted on the types of equipment proposed, which do not require a noise impact assessment to accompany the planning application. No super grid transformers (SGT) are proposed within the Proposed Development. A diesel generator is proposed for emergency use only, which would only be in operation for testing or in the event of power failure.  Construction noise is likely to be intermittent and can be controlled through the implementation of a Noise Management Plan, within the Construction Environmental Management Plan, which would include the agreement of construction working hours with Dumfries and Galloway Council.
Pollution	Concern about pollution	1	<b>The nature of the substation and electrical plant presents minimal risk with regards to pollution however a Pollution Prevention Plan would be prepared and form part of the Construction Environmental Management Plan.</b>
Historic	Suggestion to speak with local historic stakeholders to ensure no impact on historic or archaeological features	1	Historic Environment Scotland, Dumfries and Galloway Archaeology Service and NatureScot were invited to comment as statutory stakeholders. No concerns have been raised in relation to historic or archaeological features.

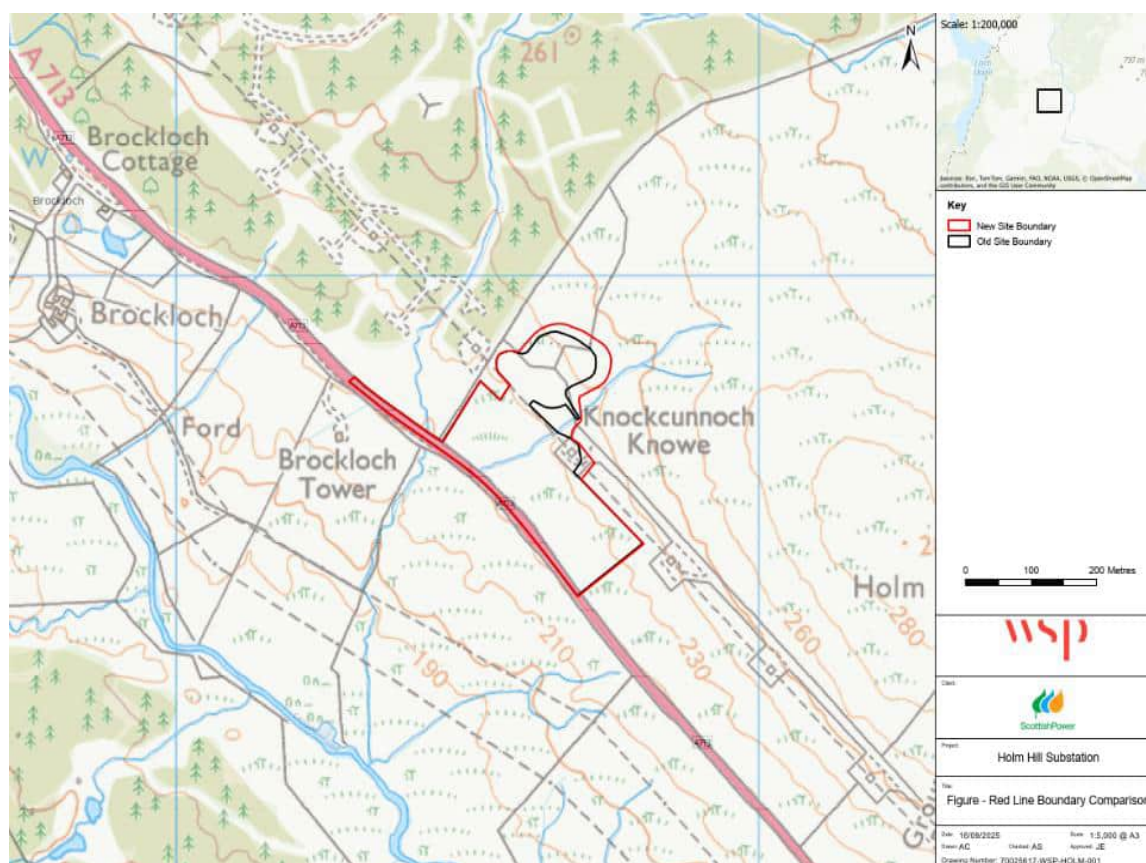
## 5 NEXT STEPS

### 5.1 Design development

#### Red Line Boundary

- 5.1.1 Since the 2024 consultation, minor design changes have been made. The Red Line Boundary (RLB) was adjusted to reflect engineering updates to the septic tank locations and associated drainage. **Plate 5.1** shows the revised RLB compared to the previous boundary.

**Plate 5.1 Revised Red Line Boundary (RLB)**



- 5.1.2 The extension of the RLB is located on the side furthest from the A713 and north of the existing overhead line.

#### Infrastructure and visual amenity

- 5.1.3 The substation platform (**Figure 2.1: Proposed Development**) associated with the Proposed Development is approximately 67 m by 56 m. This platform would accommodate a control building with a maximum height of 3.8 m, a generator, and four designated car parking spaces. To ensure Site security, the perimeter of the platform would be enclosed with palisade fencing, with a maximum height of 2.4 m.
- 5.1.4 The Proposed Development would also include a Sealing End Compound, which serves as a critical interface to connect the DE route electricity transmission network to the proposed substation platform via underground cabling (UGC). This compound would be accompanied by associated High Voltage (HV) and Low Voltage (LV) equipment, busbars, and an OHL gantry structure reaching approximately 9.5 m in height. In addition, the Proposed Development would incorporate protection systems.

- 5.1.5 Stakeholders expressed concerns about the Proposed Development's visual impact. In response, landscaping measures have been incorporated into the Proposed Development, particularly in the area between the A713 and the substation platform. These measures are designed to screen the development from key viewpoints along the Galloway Tourist Route, which borders the RLB to the south. The approach emphasises blending the development into its surroundings through strategic planting of native trees.

### **Water management**

- 5.1.6 The Proposed Development incorporates SuDS, which includes two SuDS ponds, one soakaway, and two culverts intersecting the existing watercourse, which runs through the Proposed Development RLB. The main objective of incorporating SuDS into the design of the Proposed Development is to mitigate any potential increase in downstream flood risk. Two culverts are required as part of the construction of the Proposed Development - one permanent and one temporary. Both would be embedded below the existing watercourse bed and sized appropriately to ensure hydraulic continuity while minimising ecological disruption.
- 5.1.7 Four respondents raised concerns about the impact on water supplies. This would ensure that water quality is maintained, and the likelihood of flooding is minimised. The provision of SuDS within the Proposed Development would ensure that the water quality is maintained and the likelihood of flooding is minimised.

## **5.2 Planning Application**

- 5.2.1 The Applicant would continue to keep communities up to date via the project website as its proposals move forward. There would also be further opportunities for people to provide representations following the submission of the Planning Application and associated EA. Dumfries and Galloway Council would undertake further consultation with statutory and non-statutory consultees on the proposals and content of the EA to inform the decision-making process.
- 5.2.2 The submission of the application and EA would be advertised in the press, and would also provide the opportunity for members of the public to make representations to the Council on the proposals. The Applicant would make the EA publicly available on its project website.

## ANNEX A: CONSULTATION RESPONSE SUMMARY

Consultee	Summary of feedback
<b>Statutory Consultees</b>	
Energy Consents	No response
Dumfries and Galloway Council Planning	No response
Dumfries and Galloway Council Archaeologist	No response
Scottish Environment Protection Agency	No response
Scottish Natural Heritage	No response
Historic Environment Scotland	No response
<b>Non-statutory consultees</b>	
Association of Salmon Fishery Board	No response
British Horse Society	<p>Response received: 05 September 2024</p> <p>British Horse Society request equestrian use should be included when planning and designing energy infrastructure proposals. We suggest consideration is given to how the proposed work would impact access for forest and hill tracks, some of which are designated as Core Paths, close to The Site. We are willing to work with you as your plans progress. Access to safe off-road riding routes for the health and wellbeing of horses and their riders should be a priority, especially in rural and semi-rural areas, and areas of high horse ownership, like Dumfries and Galloway. Drivers traveling to and from Holm Hill should be informed of equestrian use of roads and refer to provided document “Guidance to drivers of large vehicles”. Equestrianism is an important part of the rural economy, especially in Dumfries and Galloway.</p>
British Trust for Ornithology Scotland (BTO)	No response
BT Group	<p>Response received: 23 August 2024</p> <p>The planned project should not cause interference to BT’s current and presently planned radio network. This refers to BT Radio Links only.</p>

Civil Aviation Authority - Airspace	No response
Defence Infrastructure Organisation	No response
Dumfries and Galloway Bat Group	No response
Dumfries and Galloway Raptor Study Group	No response
Forestry Commission Scotland	No response
Galloway Fisheries Trust	Response received: 20 August 2024 A water course appears to run through The Site, it will be important to assess the water course adequately and ensure the habitat and water quality is protected.
Game and Wildlife Conservation Trust	No response
Health and Safety Executive	No response
JNCC (for Geological Conservation Review)	Response received: 21 August 2024 JNCC does not have any comments to make on the consultation as this development proposal is not located within the offshore area, does not have any potential offshore nature conservation issues and is not concerned with nature conservation at a UK-level.
John Muir Trust	No response
Marine Scotland	No response
MOD	Response received: 03 September 2024 MOD have no objection to the project but wish to be notified if any plans changes.
Mountaineering Scotland	No response
National Farmers Union	No response
National Trust for Scotland	No response
NATS Safeguarding	No response
Nuclear Safety Directorate (HSE)	No response
OFCOM	No response
RAF	No response
Ramblers Association (Scotland)	No response



Red Squirrels in Scotland (Southwest Scotland)	No response
RSPB Scotland	No response
Scottish Badgers	No response
Scottish Outdoor Access Network (SOAN)	No response
Scottish Rights of Way and Access Society (ScotWays)	No response
Scottish Water	Response received: 21 August 2024 The proposed activity falls within a drinking water catchment where a Scottish Water abstraction is located. Carsfad supplies Lochinvar Water Treatment Works (WTW) and it is essential that water quality and water quantity in the area are protected. In the event of an incident occurring that could affect Scottish Water we should be notified without delay. Request we are further consulted through the planning process. Water quality mitigation measures will be required to protect the public water supply, site specific risks and mitigation measures will require to be assessed and implemented. Scottish Water have produced a list of precautions for a range of activities, this details protection measures to be taken.
Scottish Wildlife Trust	No response
Sustrans Scotland	No response
The Coal Authority	Response received: 20 August 2024 The Site to which this submission relates is not located within the defined coalfield. On this basis we have no specific comment to make.
The Crown Estate	No response
The Woodland Trust	No response
Transport Scotland	No response
Visit Scotland	No response
<b>Local Community Councils</b>	
Carsphairn Community Council	Response received: 20 August 2024

	<p>Carsphairn Community Council requested visualisations of the substation to understand visual impact. The council requested further information on the location of the substation from the A713 and proposed access.</p> <p>Response received: 27 August 2024</p> <p>Poor quality maps were brought to the consultations. Carsphairn Community Council has requested visualisations but not received them.</p>
Dalry Community Council	No response
Glencairn / Moniave Community Council	No response
Tynron Community Council	No response
Penpont Community Council	No response
Sanquhar Community Council	No response
<b>Landowners</b>	
Landowners	No identifiable responses within anonymised consultation responses
<b>General public</b>	
Member of the public	<p>Response received: 21 August 2024</p> <p>Respondent suggested mitigation measures for visual and audio impact. Response requested construction lighting is turned off at 17:00 each day of construction and removed on completion.</p>
Member of the public	<p>Response received: 29 August 2024</p> <p>Respondent expressed disappointment at lack of information available to the public over the Proposed Development at consultation event in Lagwyne Hall, Carsphairn. Response added criticism that the consultation did not share 3D visual representation from various viewpoints, visual or acoustic mitigation measures in place. Response suggested The Applicant make concessions on the visual and acoustic damage the substation will have on its immediate environment, adding mitigation suggestions, such as, screening the development from view with trees or a hedge line, reducing the noise levels emanating from the electrical hardware.</p> <p>Respondent added concern over potential impact to tourism and residents, as the area is used for leisure (such as walkers, hikers and ramblers, horse riders and cyclists).</p> <p>Respondent requested feedback is listened to.</p>
Member of the public	Response received: 13 September 2024

Member of the public

Respondent requests further information on decision process behind Site location, due to negative visual impact on local residents. The provided elevations and plans do not contain adequate information to be able to ascertain visual impact. Visualisations for the development have been requested by respondent but not provided. Respondent requests consultation is extended until the local residents and interested parties can understand the visual impact and have time to comment once these visualisations are produced.

Response received: 13 September 2024

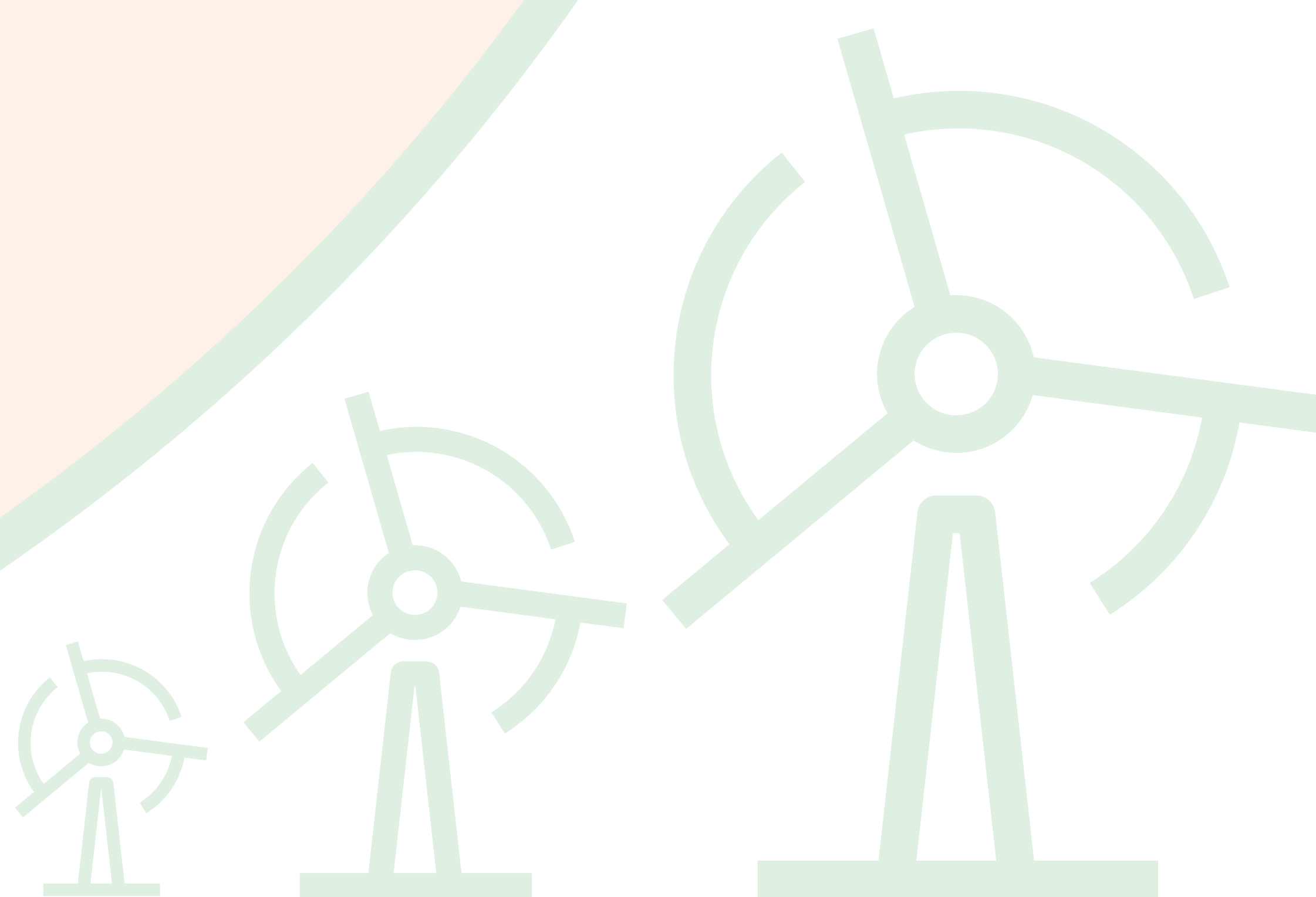
Respondent expressed concerns over potential light pollution from security lighting and request lighting is not radiated upwards to the sky. Response added concerns over archaeology and suggested The Applicant speak with local historians and archaeology groups.





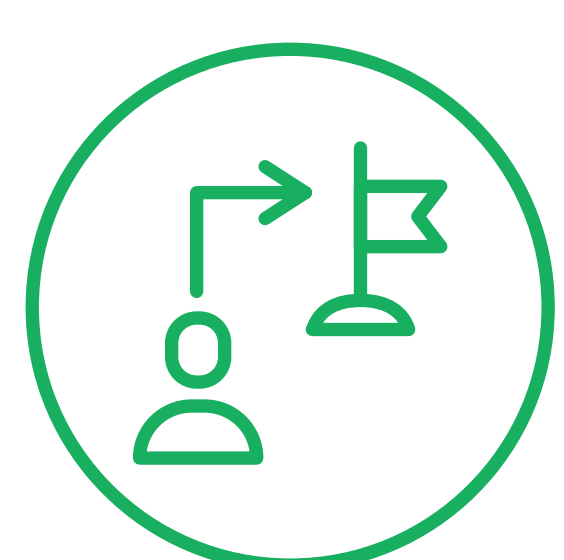
# Holm Hill Substation

Proposed Project



## Welcome

**SP Energy Networks (SPEN) is proposing to construct and operate a new 132kV substation at Holm Hill.**



## Our responsibilities

SPEN holds the electricity transmission licence for southern Scotland. We transport electricity generated from wind farms through our vast transmission network of overhead lines and underground cables, which we own and maintain.

We have a legal duty under the Electricity Act 1989 to provide grid connections to new electricity generating developments, including planned wind farms. Our systems play an important role in supporting the Scottish and UK Governments' renewable energy objectives.

The proposed substation location adjacent to the A713



## Why a substation is needed

Substations play a crucial role in enabling the transmission of electricity across the nation to supply local communities, households and commercial establishments.

The Holm Hill substation is essential for connecting local wind farms to the existing electricity transmission network. Two 132kV wind farm connections will come into Holm Hill substation, the Lorg wind farm connection (including Eucharhead and Shepherd's Rig teed to the line) and Quantans Hill wind farm connection (including Wether Hill and Cornharrow connected to the collector at Quantans Hill).



## Planning and consent

The proposed project is being progressed as an application under the Town and Country Planning (Scotland) Act 1997 and will be submitted to Dumfries and Galloway Council.



## Why we are consulting

Stakeholder and public involvement are an important part of the Scottish planning system. SPEN wants to ensure effective, inclusive and meaningful engagement to help progress projects and reach a balanced proposal.

This consultation offers you the opportunity to provide feedback and ask any questions about the proposed project before the planning application is submitted.



# Holm Hill Substation

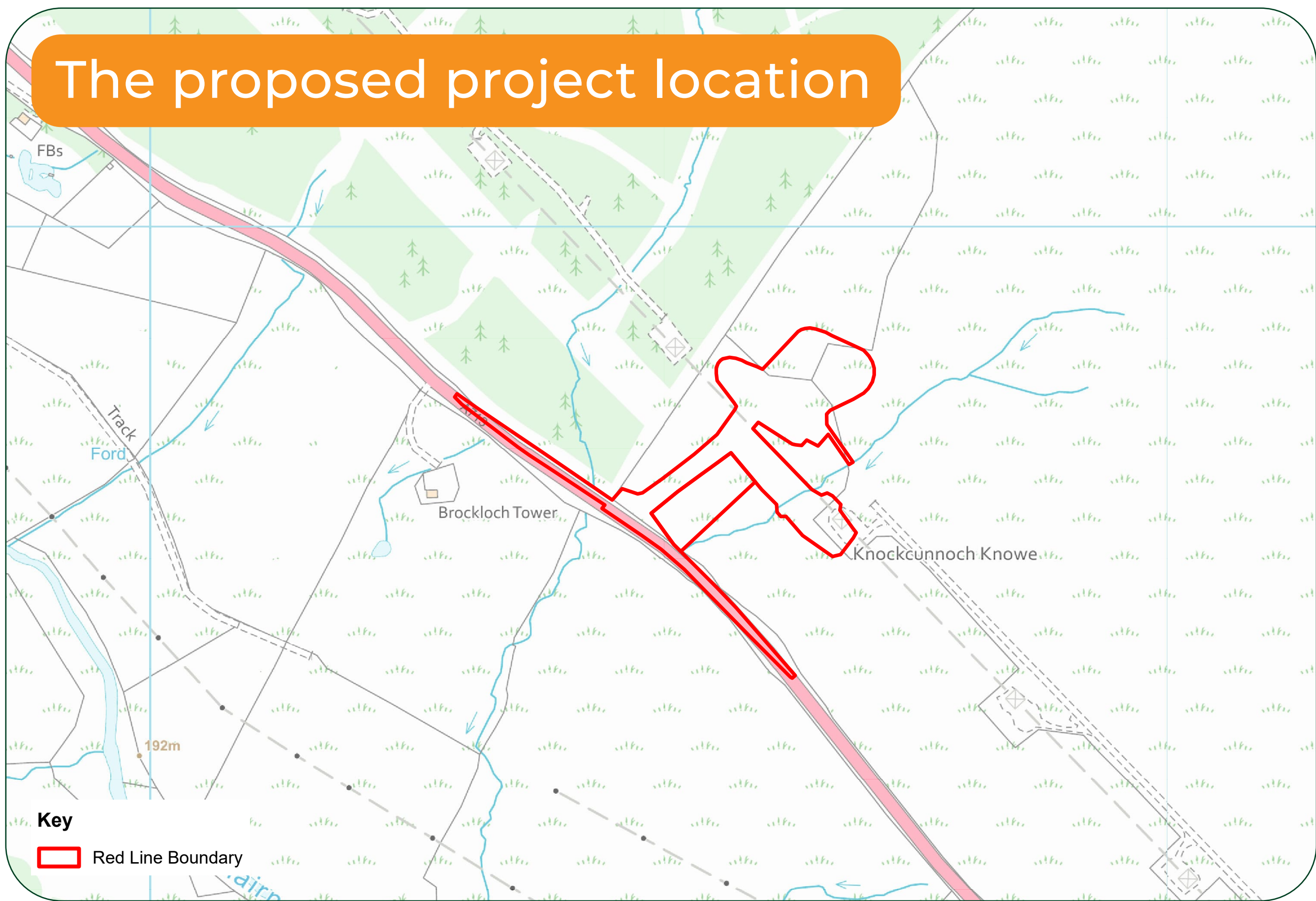
## Proposed Project

## About the substation

### Location

The proposed substation would be located approximately 2.5km to the north-west of Carsphairn and 7.5km south-east of Dalmellington.

The site is adjacent to the existing DE 132kV overhead line/steel pylon network, which shall connect to the proposed substation. The site is accessed via the A713 road network, positioned to the south of the site.



### Indicative design

Within substations, specialised equipment facilitates the transformation of high voltage electricity from overhead lines to a lower voltage that can be transported through the distribution lines to supply homes and businesses

The proposed Holm Hill substation is a 132kV Air Insulation Substation, which means that electrical equipment is arranged in open air compartments.

#### The proposed 132kV substation will comprise:

- A main platform area with electrical infrastructure, generator, control building and four car parking spaces.
- A smaller platform/compound area, which shall connect to existing adjacent pylon.
- A sustainable drainage system (SuDS) including a pond.
- A permanent vehicle access from existing A713, with bellmouth to ensure vehicles leaving the substation have clear visibility of the road.
- Other components including the security fencing, CCTV and lighting.



### Substation dimensions

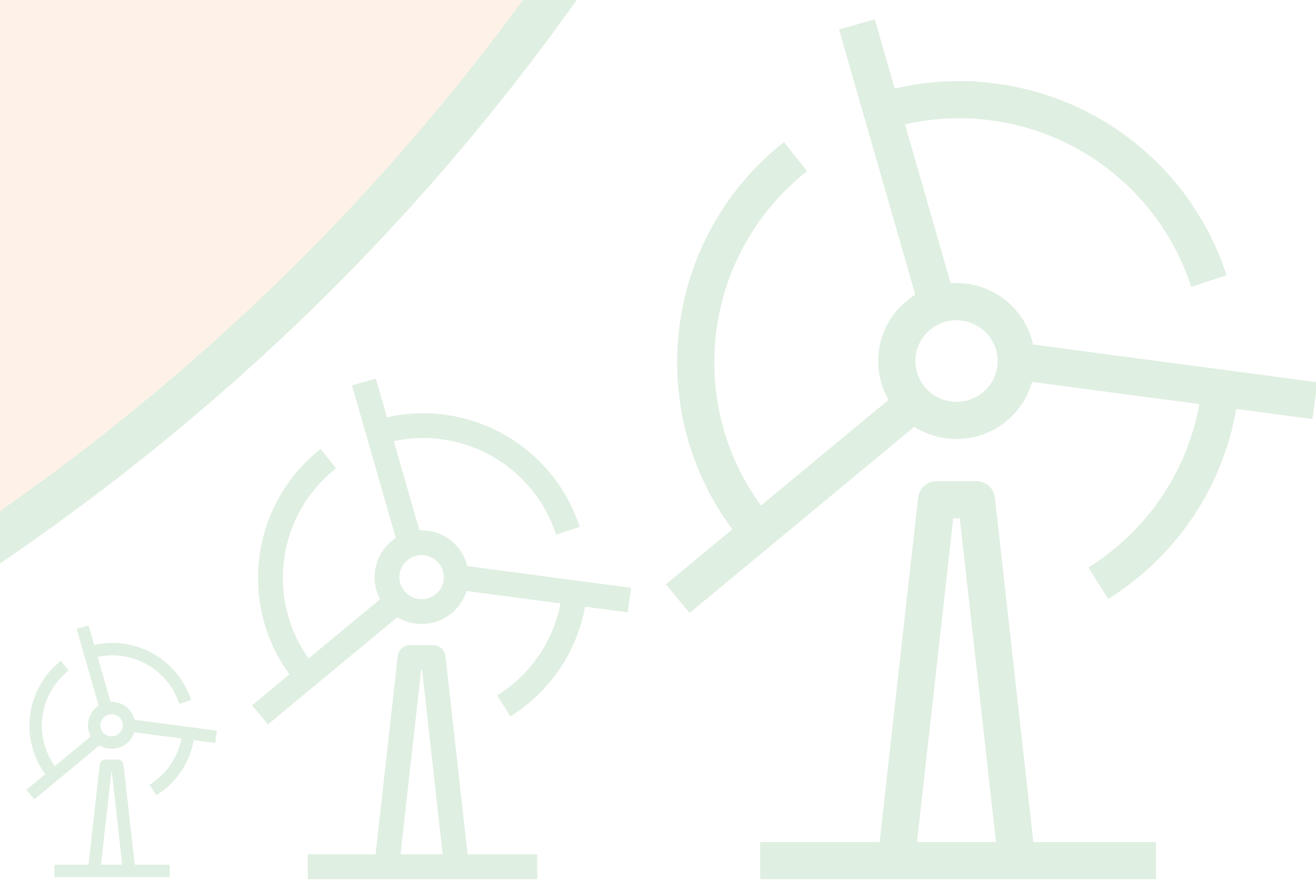
- Total substation footprint: 2Ha
- Main platform: 60m x 40m
- Building heights: approximately 3.8m
- Substation plant height: will vary between 2.7m and 9.5m
- Overhead line gantry height; 10m

At this moment in time, the substation footprint and layout is only indicative. The design will be subject to further development, taking into consideration the consultation responses and other variable factors.



# Holm Hill Substation

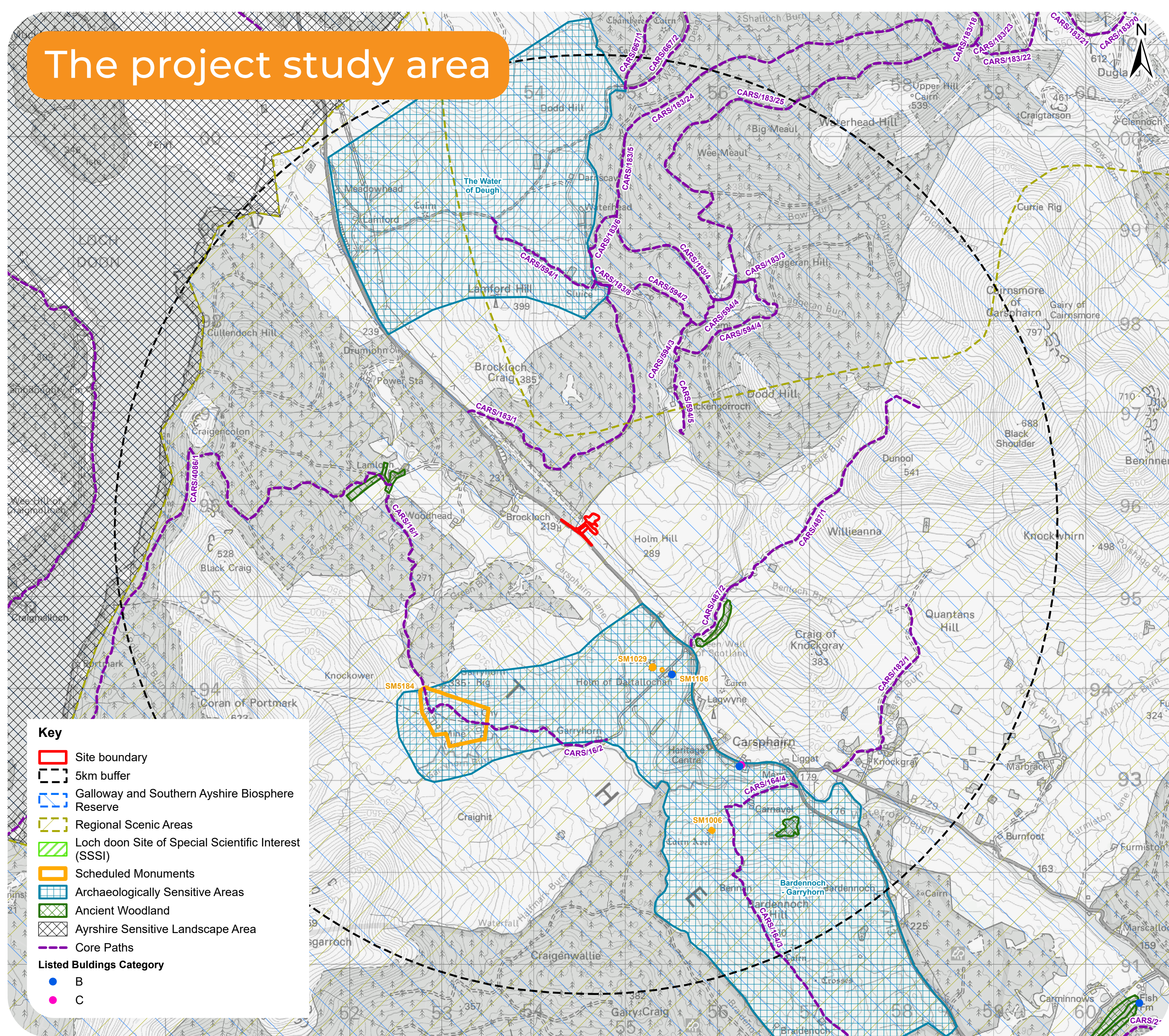
## Proposed Project



## Key considerations

As part of our site selection process and initial layout of the proposed substation, we conducted investigations to understand any potential effects on:

- Visual amenity
- Landscape
- Cultural heritage
- Ecology
- Ornithology
- Hydrology and peat
- Recreation and tourism
- Land use and forestry



These surveys ensure that we continue to incorporate ways to minimise the impact on the environment and local community as we develop the substation design. They also enable us to identify and implement suitable mitigation measures to be put in place during construction.

## Landscape and visual

The proposed substation would be read in context with the existing overhead line and pylon.

During construction, there may be some localised impacts due to construction activity and vehicle movements, but this would be short-term and temporary.

## Biodiversity

Ecological surveys show there are no signs of protected species other than otter in the vicinity of the site. Species Protection Plans will help address any impacts during construction activities including pre-construction surveys, regular surveys throughout works and avoidance of vegetation clearance during bird nesting season.

## How it will be constructed

A temporary works compound would be located between the bellmouth and substation on the eastern side of the access road. **Construction tasks would involve:**

- Establishing the temporary works compound and temporary access track
- Ground works, including temporary drainage works, to achieve a level site area
- Identifying a laydown area for materials
- Delivering materials to site
- Constructing the substation and installing the underground cables
- Reinstating the area around the site location
- Landscaping

The planning application will be accompanied by a Traffic Management Plan which the Principal Contractor will adopt and develop to minimise disruption to the local road network and other road users.

The construction of the substation is estimated to take between 12-18 months following the granting of consents for the proposed project.

## The substation in operation

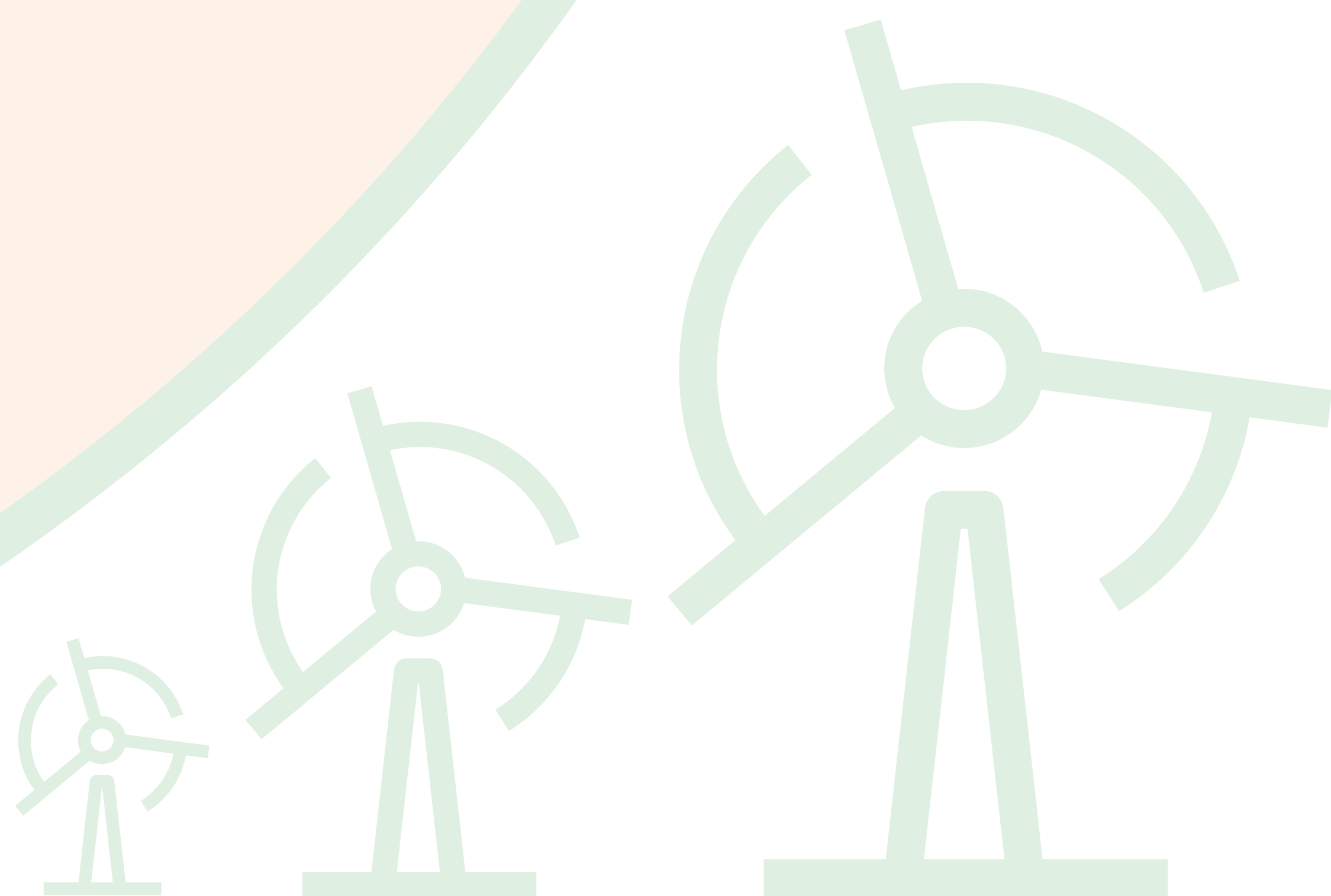
Once in operation, the site will be unmanned and there will only be infrequent visits for maintenance purposes.





# Holm Hill Substation

## Proposed Project



## Have your say

Involving the local community in the project is extremely important to us. Talking to you will help us understand your views.

We will hold a second consultation event later in September to respond to the feedback received at this first event. Dates will be announced and advertised in the Galloway Gazette closer to the time.

All feedback will be considered to help us refine the project before we submit our planning application. Where possible, we aim to resolve any concerns or consider additional mitigation measures if required.

Although we cannot reply individually to each response, we will set out the feedback received and outline how it has been considered in a consultation report. This will be published as part of our planning application.

**You can submit your comments at this exhibition using the feedback forms, or send your comments to:**

SP Energy Networks  
Holm Hill Project Manager  
55 Fullarton Drive  
Glasgow, G32 8FA

**Alternatively, please e-mail us at:**

[holmhillss@spenergynetworks.co.uk](mailto:holmhillss@spenergynetworks.co.uk)

**Leaflets and feedback forms are available for you to take away today. Copies of the leaflet are also available to download online:**

[www.spenergynetworks.co.uk/pages/holm\\_hill\\_substation](http://www.spenergynetworks.co.uk/pages/holm_hill_substation)

**Please submit your feedback before 12 noon on 13 September 2024.**

## Project timeline





