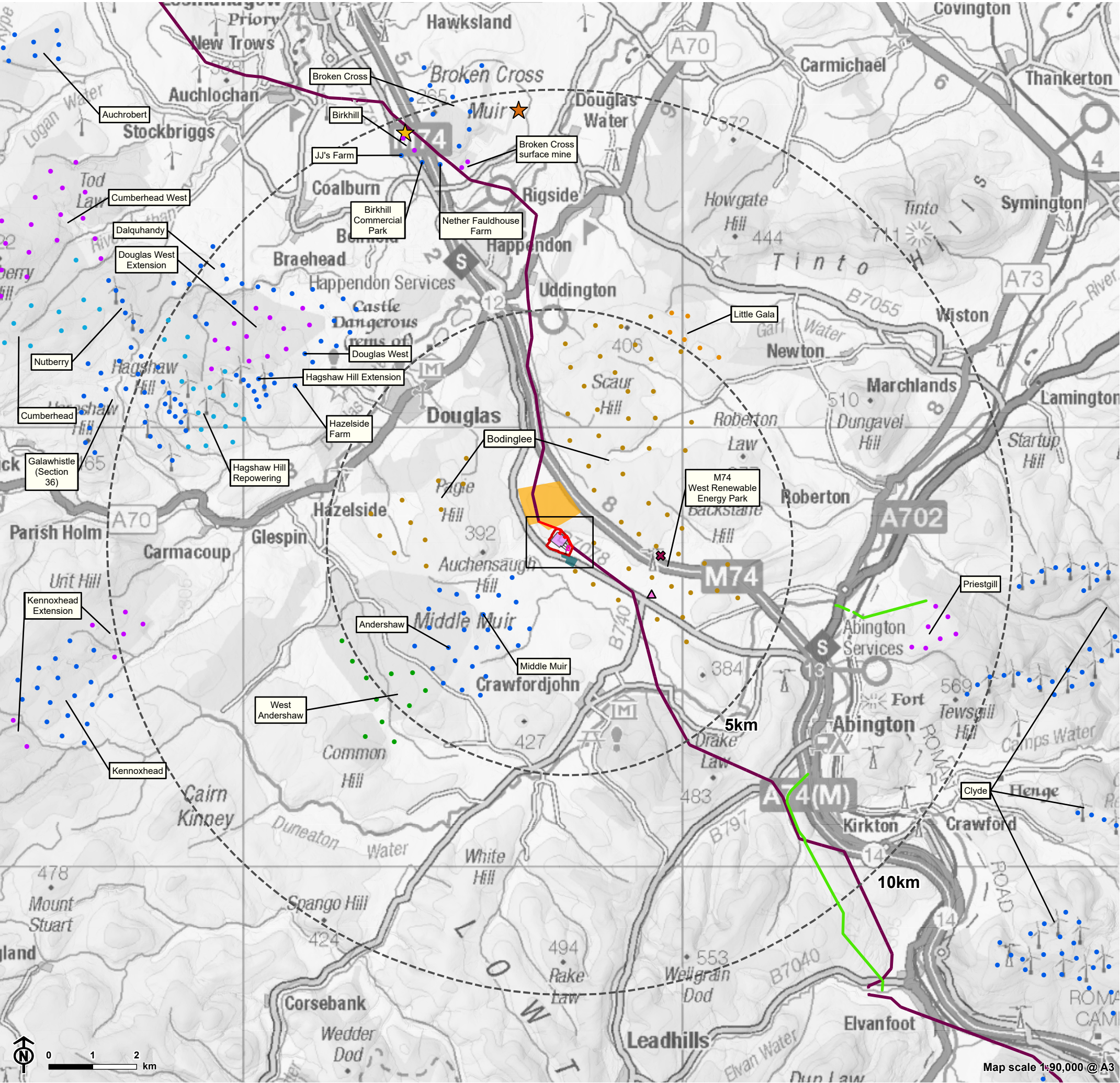


Figure 1.2: Cumulative Developments within 10km



- Site boundary
 - 5km interval from site boundary
 - Proposed Redshaw substation
 - Proposed temporary Compound
 - Proposed access road
 - Proposed farmer's access track
 - Existing 400kV Overhead Line (OHL) - ZV route
- Wind Farm Status**
- Operational
 - Under Construction
 - Consented
 - Appeal/Public Inquiry
 - Application Submitted
 - Design/Scoping
- Other developments**
- MET Mast (approved)
 - Duneaton Quarry (application for variation - previously consented)
 - Coalburn Battery Energy Storage System (BESS) (under construction)
 - Coalburn II Energy Storage Facility (consented)
 - Proposed 400kV Overhead Line (OHL) ZV diversion (pending determination)
 - Priestgill Overhead Line (OHL) (consented)
 - Redshaw Battery Energy Storage System (BESS) (submitted)
 - Red Moss Battery Energy Storage System (BESS) (submitted)

