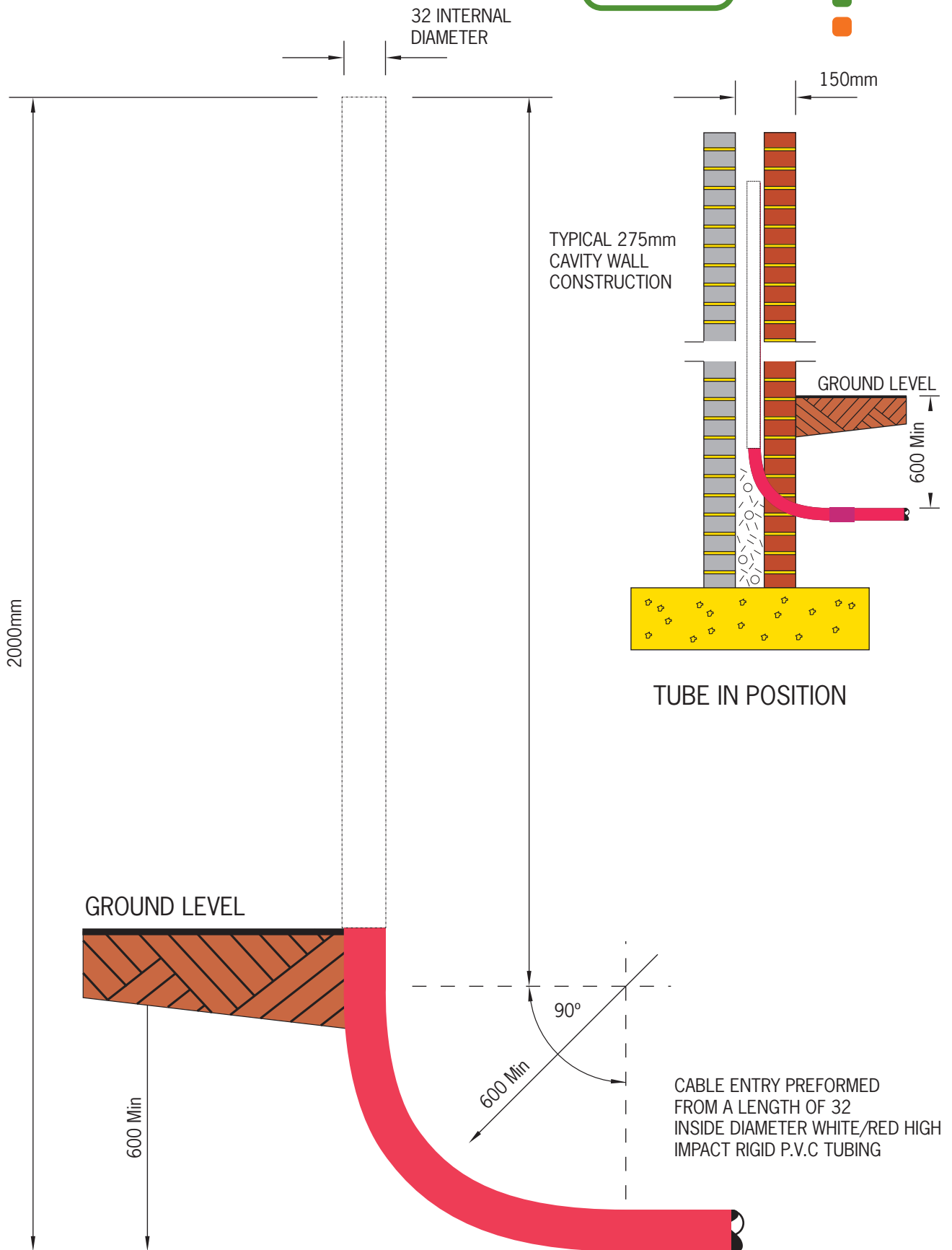
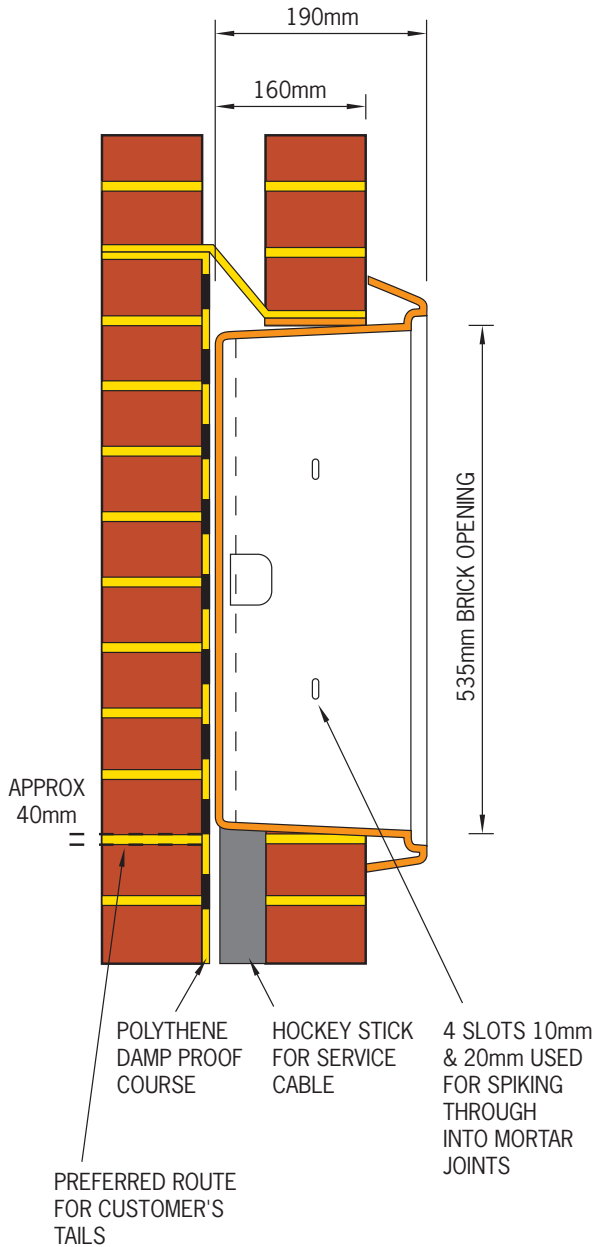


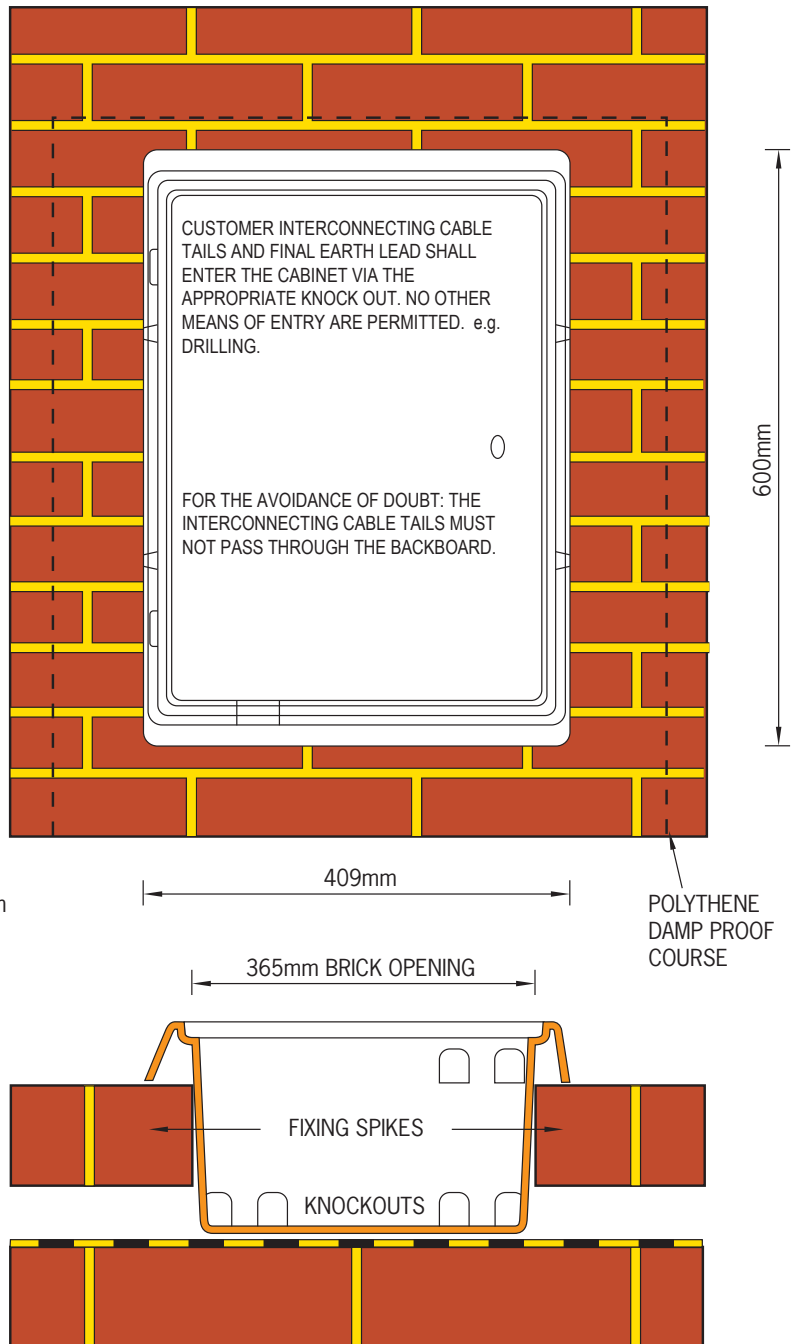
# Hockey Stick



# Outdoor Meter Cabinet Installation



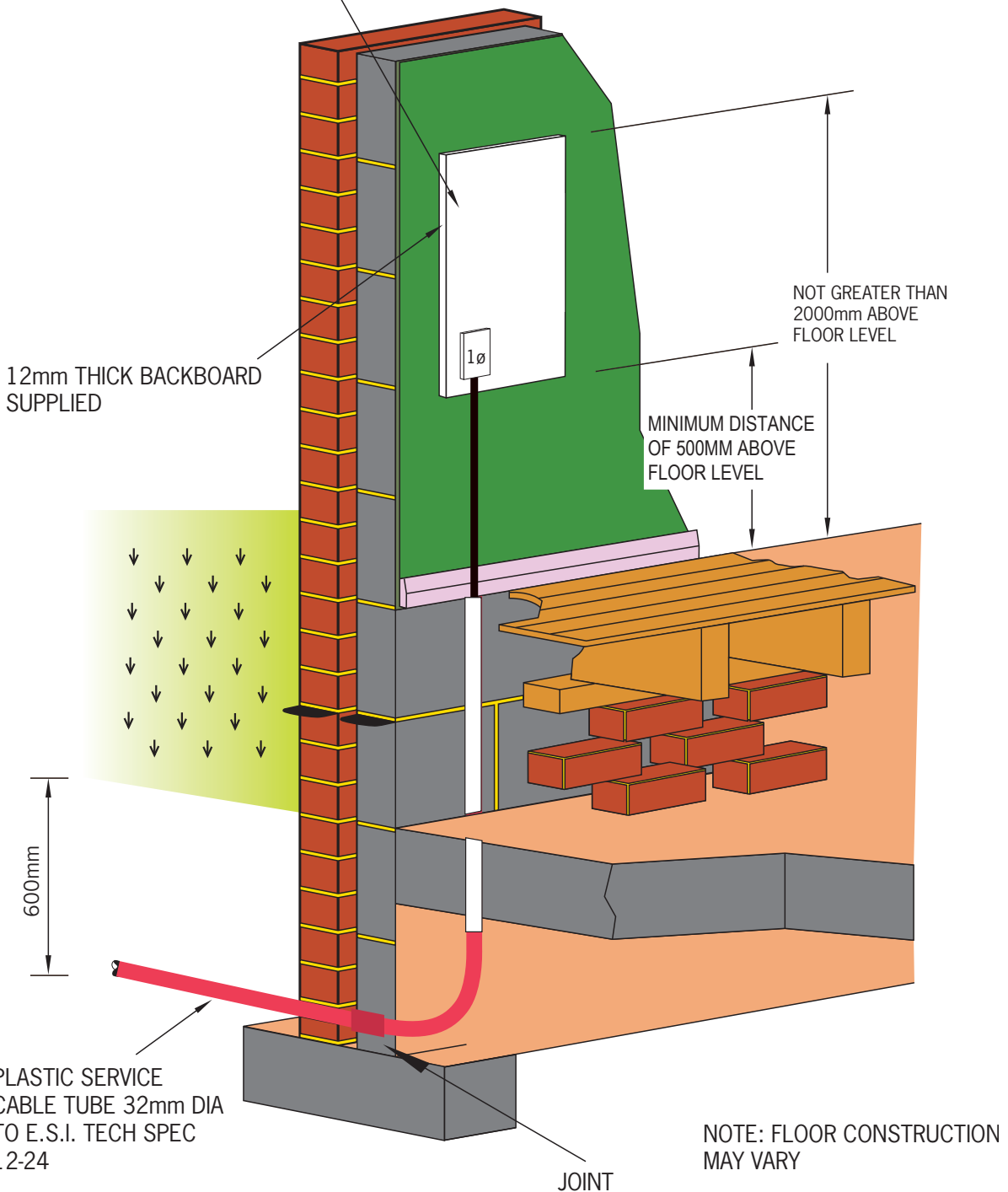
NOTE:- TOP OF CABINET NOT MORE THAN 2 METRES OR LESS THAN 1.25 METRES ABOVE GROUND LEVEL



# Indoor 1 Phase Meter Position

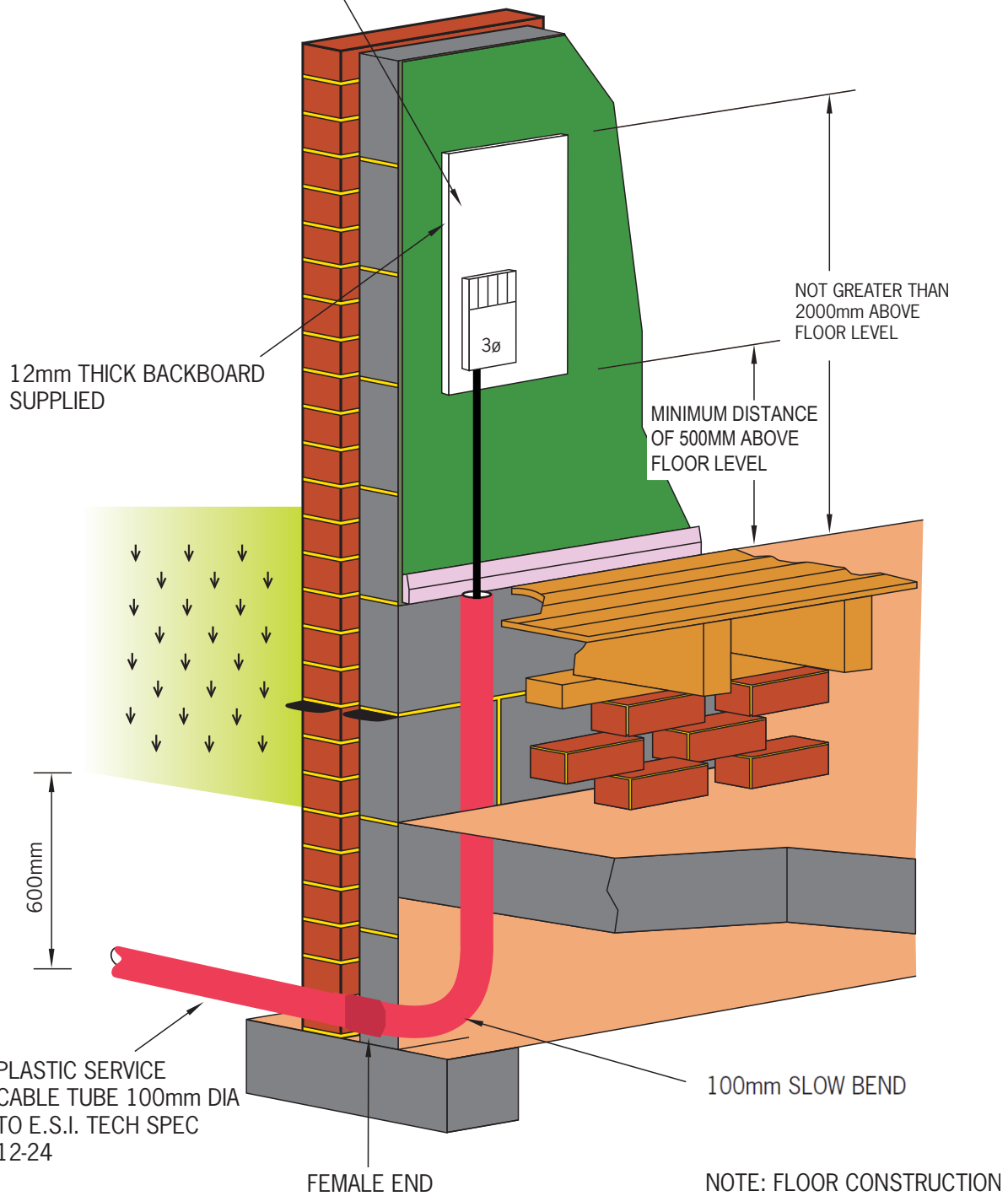
**MINIMUM SPACE REQUIRED**

700mm HIGH x 500mm WIDE  
x 200mm DEEP WITH 750mm  
FRONT ACCESS



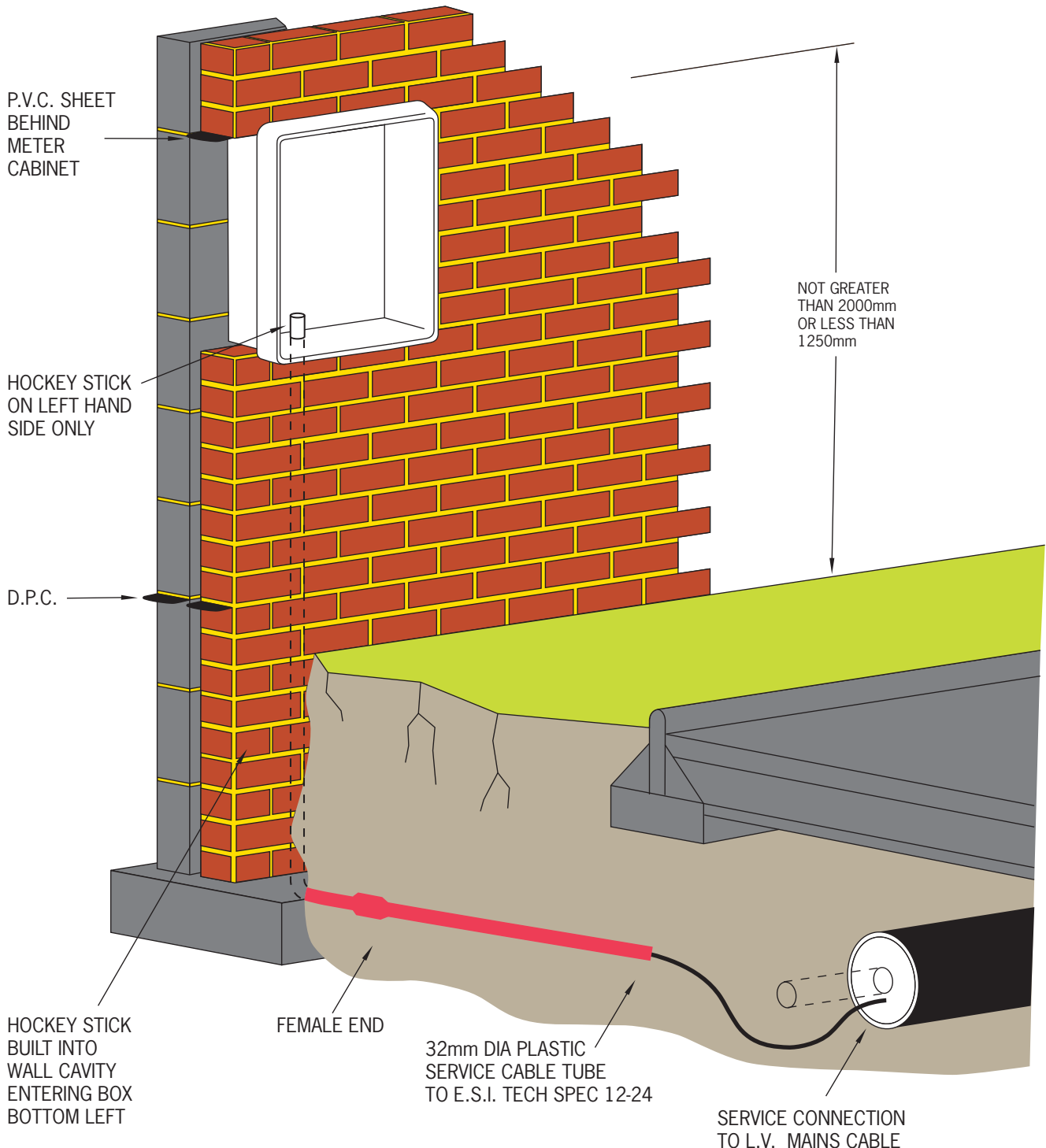
# Indoor 3 Phase Meter Position

**MINIMUM SPACE REQUIRED**  
700mm HIGH x 700mm WIDE  
x 200mm DEEP WITH 750mm  
FRONT ACCESS



# Outdoor Cavity Meter Cabinet

NOTE:- L.H. HINGED CABINET DOOR REMOVED FOR CLARITY



P.V.C. SHEET BEHIND METER CABINET

HOCKEY STICK ON LEFT HAND SIDE ONLY

D.P.C.

HOCKEY STICK BUILT INTO WALL CAVITY ENTERING BOX BOTTOM LEFT

FEMALE END

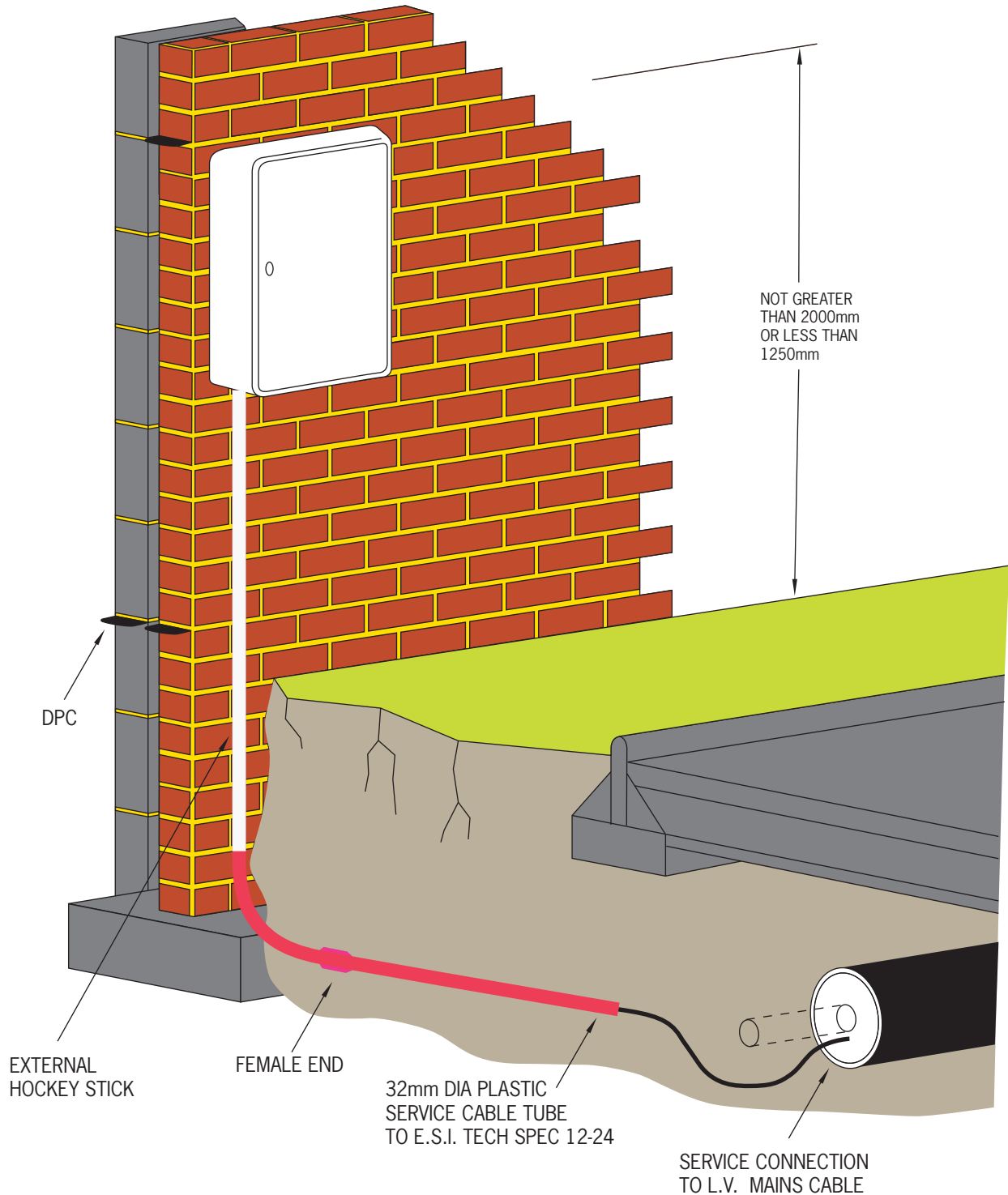
32mm DIA PLASTIC SERVICE CABLE TUBE TO E.S.I. TECH SPEC 12-24

SERVICE CONNECTION TO L.V. MAINS CABLE

NOT GREATER THAN 2000mm OR LESS THAN 1250mm

CUSTOMERS METER TAILS SHOULD NOT EXCEED 2 METRES

# Outdoor Surface Mounted Meter Cabinet



CUSTOMERS METER TAILS SHOULD NOT EXCEED 2 METRES