



## Cross Border Connection - Gala North to Scottish Border Update

# Welcome

**Thank you for taking the time today to attend our consultation event. SP Energy Networks is consulting on the proposed 400kV/132kV Teviot Substation and the 400kV steel tower overhead line which will run from the proposed Gala North Substation to the Scotland-England border.**

Between September and December last year, SP Energy Networks held 13 public consultation events across the Scottish Borders, made presentations to Community Councils and engaged with Scottish Borders Council.

A high volume of feedback was received from local communities regarding the original preferred route. Today's event forms part of a localised consultation to provide an update on modifications that have been made to the preferred route. Another round of public consultation will be held in 2026, ahead of submitting an application to the Scottish Government's Energy Consents Unit (ECU) in 2028.

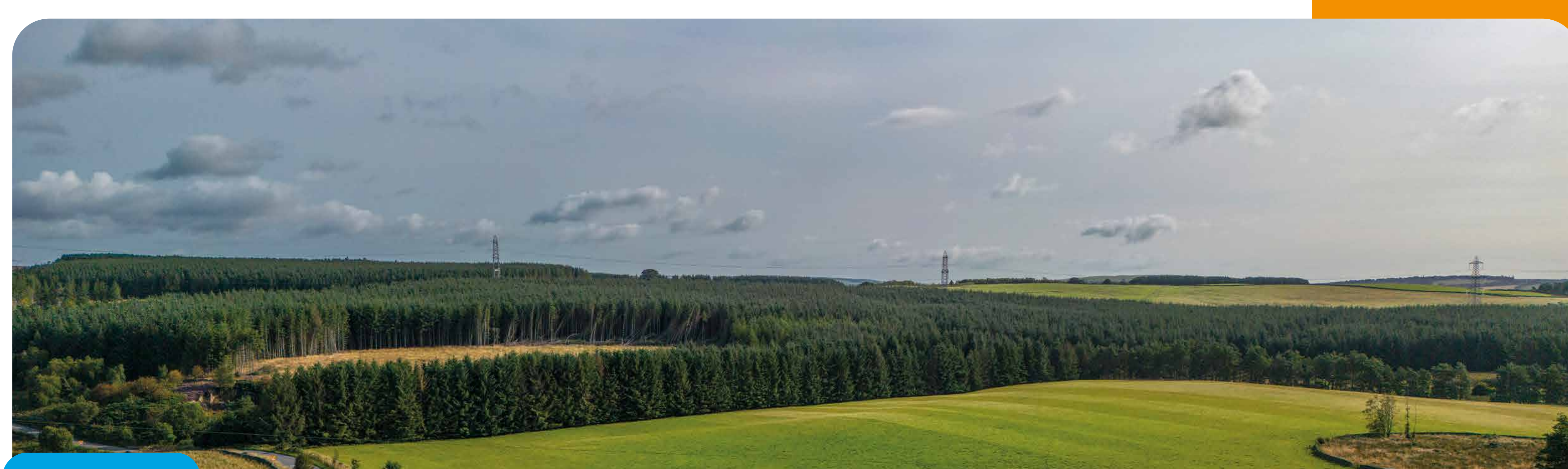
**Your views remain important to us, so please take the time to read these banners. You'll find further information on the project website, along with the ability to provide feedback through our consultation feedback forms.**

### About SP Energy Networks

SP Energy Networks is a Distribution and Transmission Network Operator. We keep electricity flowing to homes and businesses throughout Central and Southern Scotland, North Wales, Merseyside, Cheshire and North Shropshire. We do this through the network of overhead lines and underground cables which we own and maintain. Today's focus is our transmission network, which we operate in Central and Southern Scotland, through SP Transmission.

Think of it as a 'superhighway' which takes electricity generated from power stations, windfarms and various other utilities and transports it through a transmission network, consisting of over 4,500km of overhead lines and over 600km of underground cables.

Our transmission network has over 150 substations and in excess of 100 grid supply points. This is where it takes the high voltage supply and reduces it to the low voltage needed for the distribution network ready to power homes and businesses. SP Energy Networks transmits and distributes energy to over 3.5 million homes in the South of Scotland, North Wales and the North West of England and is responsible for the operation and maintenance of over 105,000km of overhead lines and underground cables.



**For more information on SP Energy Networks please scan the QR code or visit our website at:**

**[www.spenergynetworks.co.uk](http://www.spenergynetworks.co.uk)**







# Working with National Grid

**The Cross Border Connection is a joint development between SP Transmission and National Grid Electricity Transmission (NGET). SP Energy Networks is developing and will construct the section of the connection in Scotland, the SP Energy Networks project, while NGET is delivering the connection in England, the NGET project. The two parties continue to work closely on the project.**

NGET's proposals for the Cross Border Connection in England remain at an early stage of development. Later this year, NGET plans to hold its first stage of consultation, known as a non-statutory consultation, at which point they will present their early proposals, including proposed technology and routeing/siting aspects in England.

NGET will seek consent for the area of the project situated in England via a Development Consent Order (DCO), as it is a Nationally Significant Infrastructure Project. The UK Government's Secretary of State for Energy Security and Net Zero will decide whether to grant development consent for the proposals in England.

**Although SP Energy Networks is consulting on a preferred route before NGET, the Scottish section of the project will be subject to alignment with the section in England before detailed design.**



**Scan the QR code to visit our project website or visit our dedicated Cross Border Connection website at :**

**[www.spenergynetworks.co.uk/pages/cross\\_border\\_connection.aspx](http://www.spenergynetworks.co.uk/pages/cross_border_connection.aspx)**





## Project overview

The modified preferred route for the overhead line would be circa 92km, running from the proposed Gala North substation to a point at the Scotland-England border, east of Newcastleton. The line would connect to a new Teviot substation, which would potentially be located close to Whitrope. The overhead line would use a 400kV double circuit line supported by steel lattice towers.

### There are three elements to the proposals

Construction of a new double circuit 400kV overhead line, running north-south from Gala North substation to Teviot substation.

Construction of the Teviot substation.

Construction of a new 400kV overhead line running from Teviot substation to a point at the border.



Full versions of the maps are available on the project website

### Overhead Line

The proposed towers along the route will have three arms on each side, and each arm will carry a set of conductors. There will be a circuit on each side of the towers, and each circuit has three sets of wires.

The towers will be made of galvanised steel, are grey in colour and become duller in appearance over time.

The standard height of the proposed towers will be around 50m but can go up to 61m where required to ensure electrical safety clearance from the ground. They will be placed between 200m and 300m apart with the exact distance between them varying depending on the landscape and any obstacles such as roads, rivers and railway lines.



### Teviot Substation

The proposed Teviot substation will potentially be located close to Whitrope, approximately 13km south of Hawick. The actual footprint of the substation will depend on the final design and layout of its several elements.

Within substations, specialised equipment facilitates the transformation, or 'switching,' of voltage levels. Transformers positioned within the substation either step up or step down the voltage as required.

The switchgear technology to be used within the proposed Teviot substation is subject to detailed design and evaluation.



Scan the QR code to visit our project website or visit our dedicated Cross Border Connection website at :

[www.spenergynetworks.co.uk/pages/cross\\_border\\_connection.aspx](http://www.spenergynetworks.co.uk/pages/cross_border_connection.aspx)





# Headline Feedback

## Impact on the local economy and tourism

The modified preferred route is now further away from major destinations for tourists and local businesses.

## Visual impact on local communities

The modified preferred route is now further away from local communities in Thornielee, Yarrowford, Ettrickbridge and Roberton.

## Impact on the environment and biodiversity

The routeing process was guided by landscape and environmental considerations. We received additional information through the consultation and we have made modifications, where possible, to avoid conservation areas and key habitats. The Environmental Impact Assessment (EIA) will assess any potential environmental and biodiversity impacts in detail.

## Community benefit

The Government will be publishing guidance, creating opportunities for communities to bid for future funding.

## Impact on the local heritage and cultural landscape

SP Energy Networks continues to engage with Historic Environment Scotland to ensure that national heritage assets and their settings are preserved, including Penchrise Pen, Stobs Camp and the Stobs Camp Rifle Ranges.



**Scan the QR code to visit our project website or visit our dedicated Cross Border Connection website at :**

**[www.spenergynetworks.co.uk/pages/cross\\_border\\_connection.aspx](http://www.spenergynetworks.co.uk/pages/cross_border_connection.aspx)**

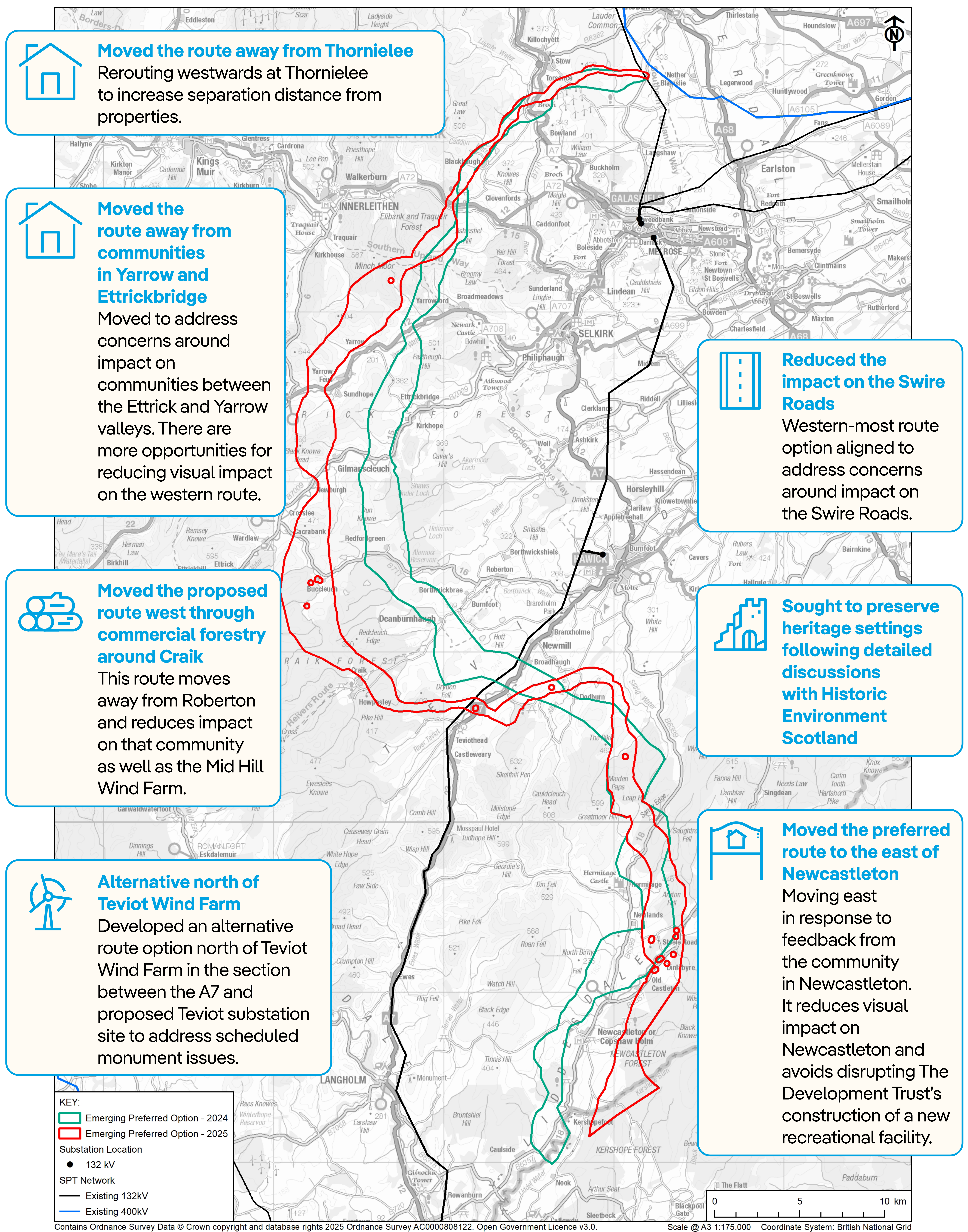




# Finding the right balance

## Modifications to the preferred route

Thank you to everyone who attended our drop-in sessions and took the time to share their views. Your input has helped to further develop the proposals. Following feedback at consultation, we have made modifications to the preferred route.



Scan the QR code to visit our project website or visit our dedicated Cross Border Connection website at :

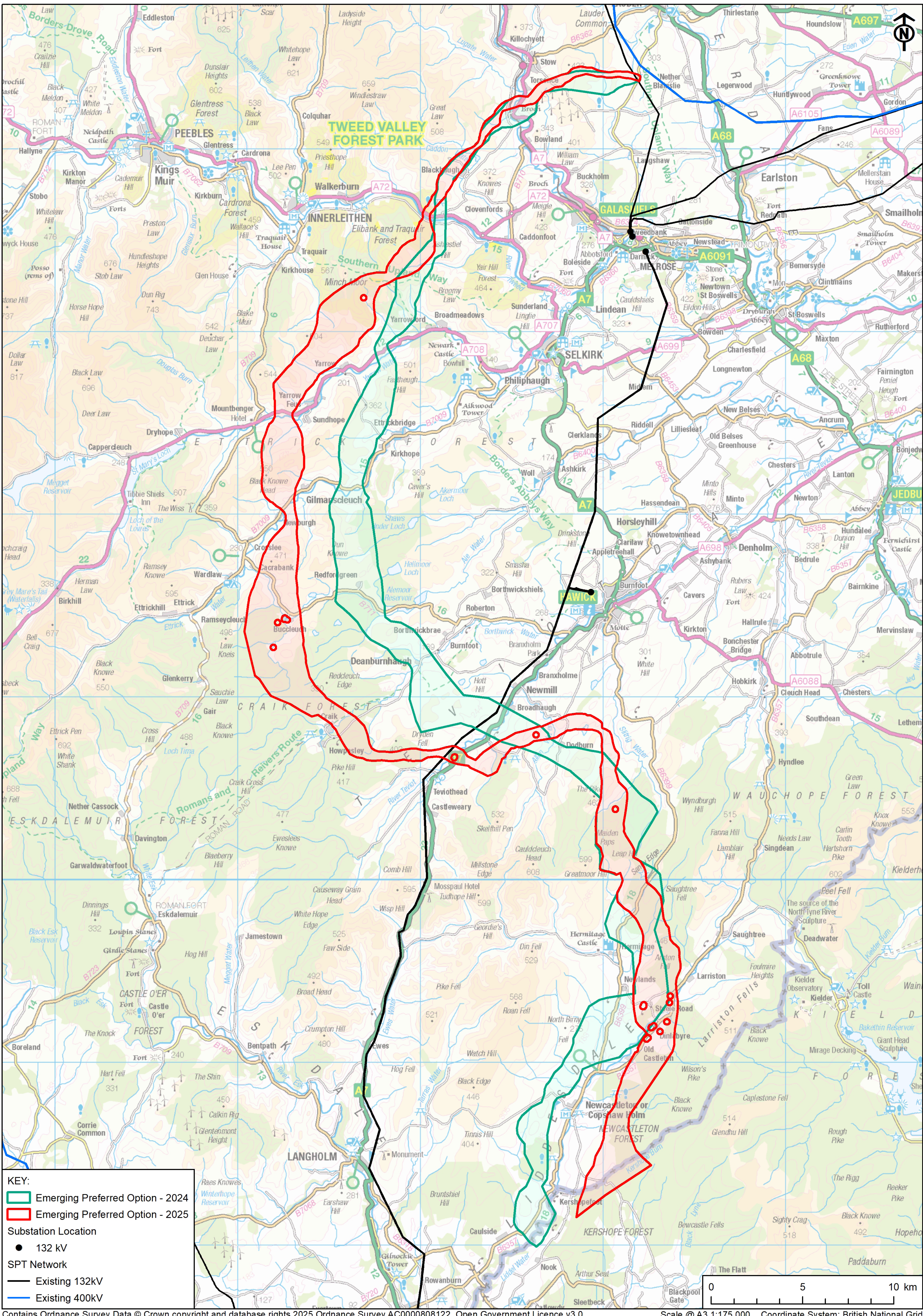
[www.spenetworks.co.uk/pages/cross\\_border\\_connection.aspx](http://www.spenetworks.co.uk/pages/cross_border_connection.aspx)



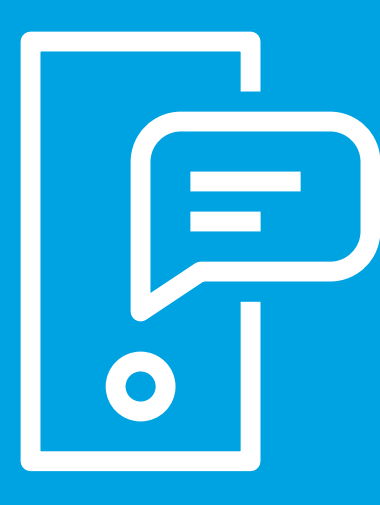


# Our modified preferred route option

Our modified preferred route (in red) compared with our original preferred route (in green)



Full versions of the maps are available on the project website



Scan the QR code to visit our project website or visit our dedicated Cross Border Connection website at :

[www.spenetworks.co.uk/pages/cross\\_border\\_connection.aspx](http://www.spenetworks.co.uk/pages/cross_border_connection.aspx)





# Acting on your feedback to define the modified preferred route

## Description of our modified preferred route

**Since the first round of engagement in 2024, SP Energy Networks has been reviewing feedback and has now made modifications to the preferred route. As a result, the overall length of the modified preferred route has increased. It is around 92km located entirely within the Scottish Borders from the proposed Gala North substation south of Lauder to the Scotland-England border, southeast of Newcastleton.**

The modified preferred route is routed west and southwest from the proposed new Gala North substation toward the Gala Water. It crosses the Gala Water and Borders Railway Line to the south of Torsonce and continues southwest across the lower slopes of the Moorfoot Hills towards the River Tweed. The crossing point of the River Tweed has been moved slightly further west into commercial forestry which sits either side of the Tweed valley.

The modified preferred route continues south on the eastern extent of the Tweedsmuir Hills, routing within Elibank and Traquair Forest and the southern extent of Tweed Valley Forest Park at Minch Moor. It has been moved further west crossing the Yarrow Water to the west of Sundhope, approximately 5km east of St Mary's Loch. It continues directly south across the lower part of the Ettrick Hills crossing the Ettrick Water west of Gilmanscleuch.

From here, the modified preferred route proceeds southeast through Craik Forest avoiding the proposed Mid Hill Wind Farm, which was identified during the previous consultation. It crosses the A7 and River Teviot in an eastern direction just north of Teviothead, approximately 9km southwest of Hawick. The modified preferred route crosses land to the north of the proposed Teviot Wind Farm continuing towards Stobs Castle and then south to the proposed new Teviot substation on the margins of commercial forestry northwest of Whitrope.

From the proposed Teviot substation, the modified preferred route continues south to the east of Hermitage across Arnton Fell, partly following the safeguarded railway line. It continues south towards Newcastleton Forest and is routed to the east of the valley on the boundary of the forest and the proposed Borders Wind Farm. The modified preferred route continues south until it reaches the Scotland-England Border where it meets Kershope Forest.



**Scan the QR code to visit our project  
website or visit our dedicated Cross Border  
Connection website at :**

**[www.spenergynetworks.co.uk/pages/cross\\_border\\_connection.aspx](http://www.spenergynetworks.co.uk/pages/cross_border_connection.aspx)**





# Consultation process

**We are planning multiple rounds of public consultation before we submit our consent applications to the Scottish Government's Energy Consents Unit.**

01

This first round of consultation, which took place from 23rd September to 23rd December 2024, was to seek people's views on our original preferred route for the proposed new overhead line, and where the new line might go within that route.

02

Following this first round of consultation we reviewed all feedback, which has helped shape our proposals further and helped contribute to our modified preferred route. Our modified preferred route consultation period will run from **24th March to 2nd May 2025**. We will publish a consultation report summarising the feedback received in this first round of consultation and how this has influenced our proposals.

03

Following consultation, a Proposed Route will be established which we will take forward to detailed design to establish locations for towers, access routes and working areas.

04

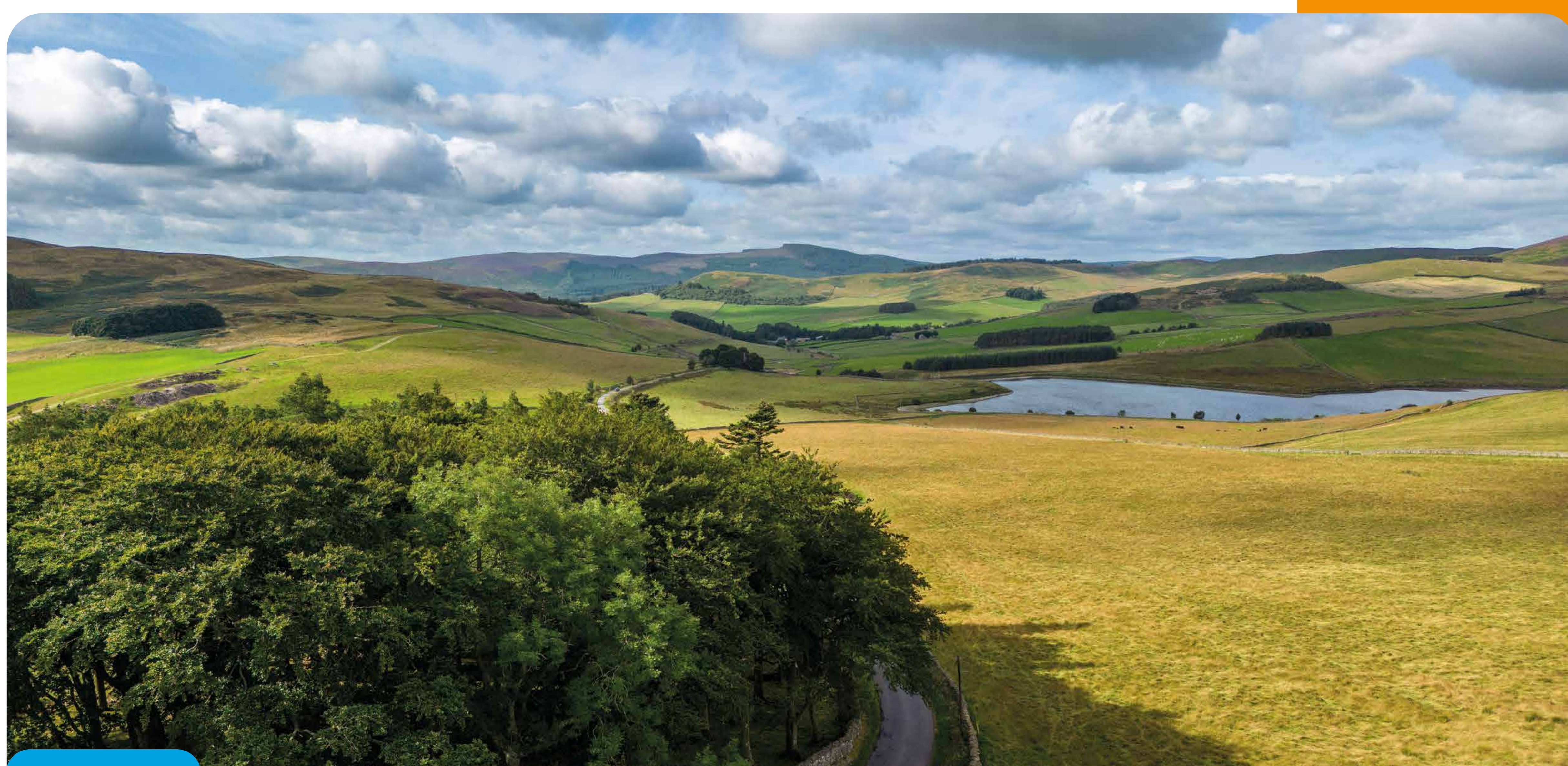
We are due to carry out a detailed Environmental Impact Assessment and hold a second round of public consultation in 2026, so that people can give us their views on the detailed route alignment.

05

After considering feedback received in the second round of consultation, we will finalise our proposals and submit consent applications to the Scottish Government's Energy Consents Unit, for consideration by Scottish Ministers.

06

Scottish Ministers will then undertake a final round of statutory consultation before making any decision on our applications.



**Scan the QR code to visit our project website or visit our dedicated Cross Border Connection website at :**

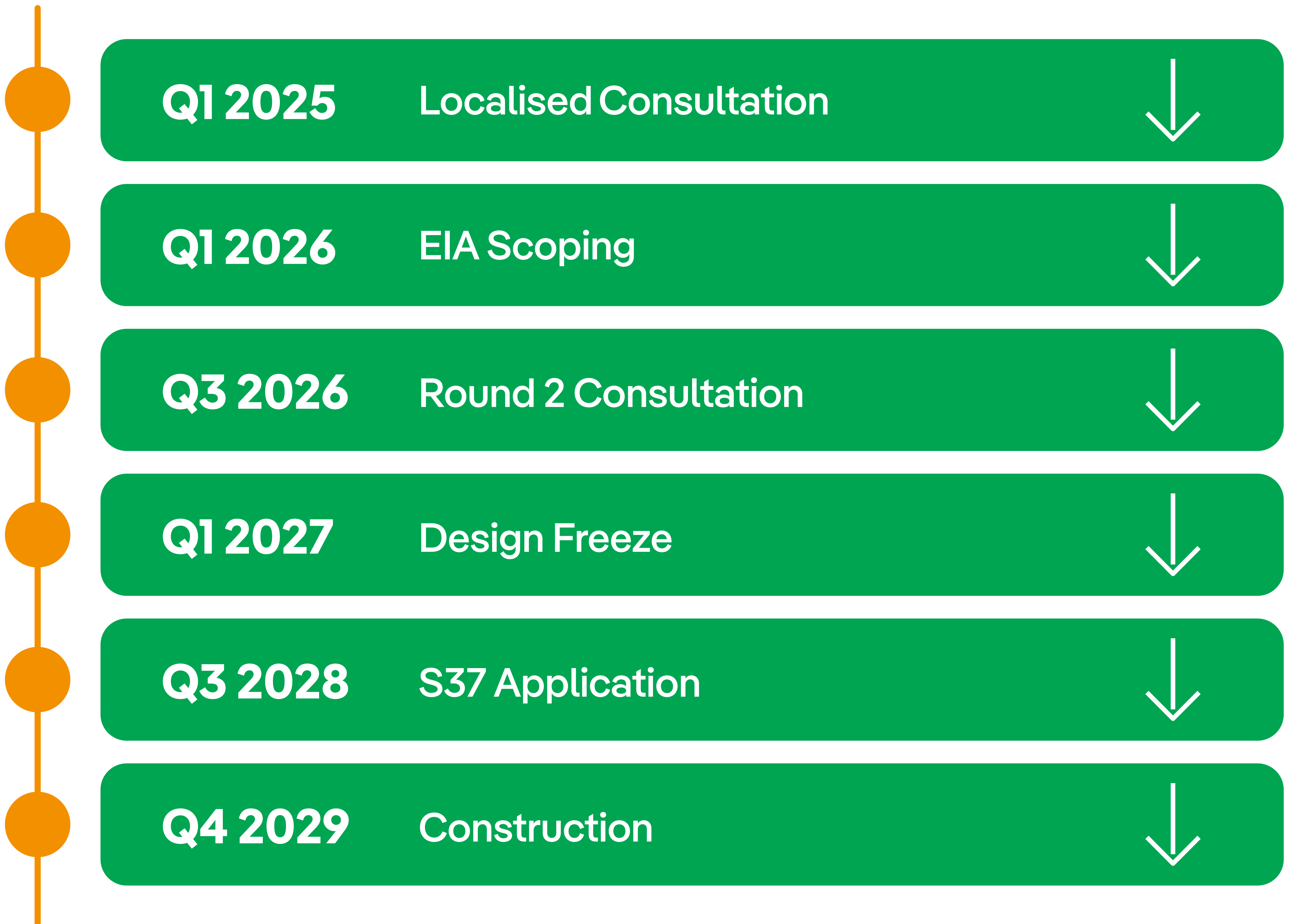
**[www.spenergynetworks.co.uk/pages/cross\\_border\\_connection.aspx](http://www.spenergynetworks.co.uk/pages/cross_border_connection.aspx)**





## Project Timeline

### Gala North to Scottish Border Project timeline



### Consenting Programme timeline



Scan the QR code to visit our project website or visit our dedicated Cross Border Connection website at :

[www.spenergynetworks.co.uk/pages/cross\\_border\\_connection.aspx](http://www.spenergynetworks.co.uk/pages/cross_border_connection.aspx)







# Getting more information and providing your feedback

**You will be able to view physical consultation materials at the following locations:**

**Wednesday 26th March**

Yarrow Feus Hall (3-7pm)

---

**Thursday 27th March**

Kirkhope Parish Hall, Ettrickbridge (3-7pm)

---

**Monday 31st March**

Newcastleton Village Hall (3-7pm)

---

**Tuesday 1st April**

Teviothead Village Hall (3-7pm)

---

**Wednesday 2nd April**

Forman Memorial Hall, Robertson (3-7pm)

---

You can also share your views by phone on **020 3861 3742**, or email us at: **info@crossborderconnection.co.uk**  
Visit the project website: **www.spenetworks.co.uk/pages/cross\_border\_connection.aspx**

**If you would like a hard copy of any consultation materials, please contact us. Any materials can also be made available in large print format.**

Please note that any data collected through your consultation feedback will only be used to help understand views regarding the Cross Border Connection. The data will not be used for any other purposes. The data will be collated and analysed to help in the reporting of consultation feedback.

SP Energy Networks is committed to respecting your privacy and will comply with all applicable data protection and privacy laws. We're consulting you to get your views on the proposed Cross Border Connection, so we may need to share your information with certain other bodies for the purposes of the consultation and for creating reports. These are: other ScottishPower Group companies; National Grid, third party service providers, contractors or advisors who provide services to us; relevant planning authorities.



**Scan the QR code to visit our project website or visit our dedicated Cross Border Connection website at :**

**[www.spenetworks.co.uk/pages/cross\\_border\\_connection.aspx](http://www.spenetworks.co.uk/pages/cross_border_connection.aspx)**

