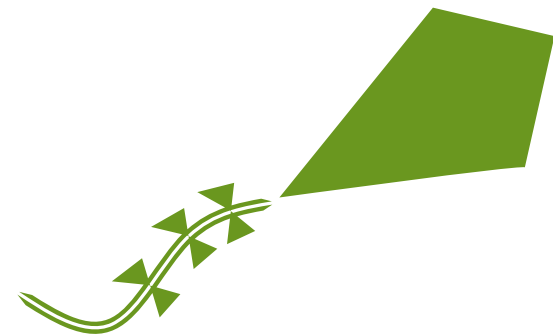


In An Emergency

- **Dial 999 and ask for the Police**, giving them your location as accurately as you can.
- Tell them overhead power lines are involved and ask them to contact SP Energy Networks.
- Always assume power lines are LIVE, even if they've fallen to the ground, are broken, or aren't sparking.
- Stay away from any person/object in contact with an overhead line and keep others away – touching them could be fatal.
- Damaged lines can remain live or be re-energised automatically or remotely without warning if SP Energy Networks isn't aware of an incident.

If you're inside a vehicle or craft

- Stay inside, keep others away and call the Emergency Services immediately.
- If you have to get out of the vehicle/craft, JUMP CLEAR making leaping strides so that one foot is off the ground at all times until you're at least 5 metres away.
- Make sure you don't touch the vehicle/craft and the ground at the same time.



Contact Us

We provide free safety advice to help you stay safe near power lines.

For free safety advice and general network enquiries:

- www.spenergynetworks.co.uk
- customercare@spenergynetworks.com
- 0330 10 10 444

For electricity network plans:

Cheshire, Merseyside, North Wales & North Shropshire

- 0141 614 5666
- requestforplansmanweb@spenergynetworks.co.uk

Central & Southern Scotland

- 0141 614 9903
- requestforplansscotland@spenergynetworks.co.uk

In an emergency only:

- | | |
|--|--------------------------------|
| Cheshire, Merseyside,
North Wales &
North Shropshire | Central & Southern
Scotland |
| 0800 001 5400 | 0800 092 9290 |

For more free safety advice, visit:
www.spenergynetworks.co.uk/safety



Further Information

- The Energy Networks Association produces a range of leaflets for specific leisure pursuits which are available free of charge at:
www.energynetworks.org/electricity/she/safety/safety-advice/public-safety-leaflets.html
- Health and Safety Executive (HSE) Guidance Note GS6 'Avoiding Danger from Overhead Power Lines' provides comprehensive advice about safety near power lines and is available via www.hse.gov.uk/electricity/information/overhead.htm

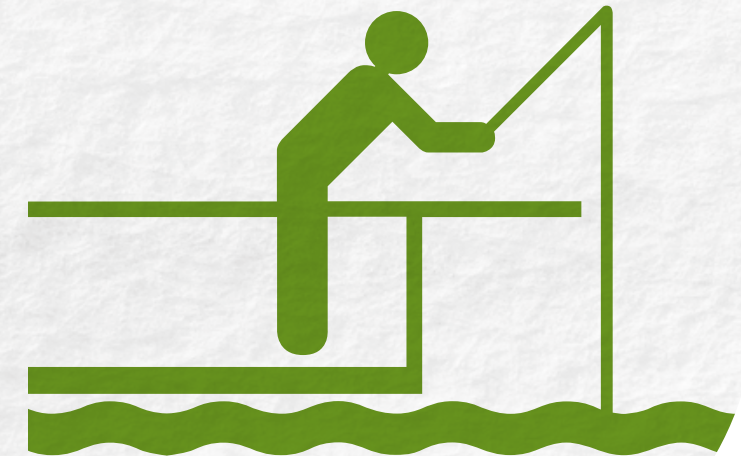
A Clear Sign

Look up and look out for power lines. If you see this sign on any equipment keep well clear, it means what it says.



Safety Matters

When taking part in leisure activities near overhead power lines



Introduction

This leaflet is aimed at anyone planning to undertake an outdoor leisure activity – or erect a temporary structure – close to an overhead power line. It's designed to provide information to help people stay safe.

The electricity network is made up of overhead electric power lines, underground cables, substations and other equipment which transmits and distributes electricity from a power station to your plug.

This equipment carries voltages ranging from 400,000 volts down to domestic voltage at 230 volts (even this can be lethal). It's safe in normal conditions, but each year people get injured and even killed when they accidentally come too close or into contact with equipment on the electricity network. So it's important you know how to stay safe.

General Safety Information

- NEVER touch overhead power lines.
- Don't assume that lines on wooden poles are telephone wires; most overhead power lines are supported on wooden poles.
- Most power lines aren't insulated.
- Always assume power lines are LIVE, even if they've fallen to the ground, are broken, or aren't sparking.
- Almost any material... kite string, fishing rod, metal fencing, TV aerial... can conduct electricity... even a jet of water can.
- Stay away from any person/object in contact with an overhead line and keep others away as touching them/it could be fatal.
- If your apparatus makes contact with an overhead line, contact the Police or SP Energy Networks & don't attempt to retrieve it.
- Rubber boots won't protect you.
- Electricity can jump gaps.
- Damaged lines can stay live or be re-energised automatically or remotely without warning if SP Energy Networks isn't aware of an incident.
- Ensure you, your family and colleagues are familiar with the yellow and black 'Danger of Death' electricity sign seen on wooden poles, pylons, substations etc.

On Or Near Water

- If there are overhead lines in the area, where possible, enjoy your activity elsewhere; if not, keep at least 30 metres away from any overhead lines and cast fishing rods with care.
- Fishing rods and boat masts will conduct electricity.
- Take particular care in car parks and on access routes.
- Always carry equipment at a low level, parallel to the ground.
- Rubber boots or waders won't protect you.

Tents, Marquees, Caravans & Other Temporary Structures

- If possible, avoid pitching a tent or caravan directly under, or close to, an overhead line.
- Be very aware when erecting TV aerials or radio masts on mobile homes or static caravans; never attach or tie anything to a wooden pole, pylon or piece of electrical equipment.
- If leading a group, ensure everyone understands the danger from overhead lines
- Don't light fires beneath overhead power lines.

Sports Grounds

- If you've overhead power lines crossing your site and use tall equipment such as mobile ball stop systems, contact SP Energy Networks for free safety advice.
- Ensure all users of such equipment are aware they must carry it at a low level, parallel to the ground, and take special care when erecting, dismantling and moving equipment.

Advice To Clubs, Sites & Activity Centres

- If you've overhead power lines on your site, contact us for free safety advice.
- Display maps showing the location of overhead lines and emergency telephone numbers.
- Instruct all staff on the dangers of overhead power lines, how to use equipment safely near to them and what to do in an emergency.