

PowerSystems

SUB-02-613, Issue No2

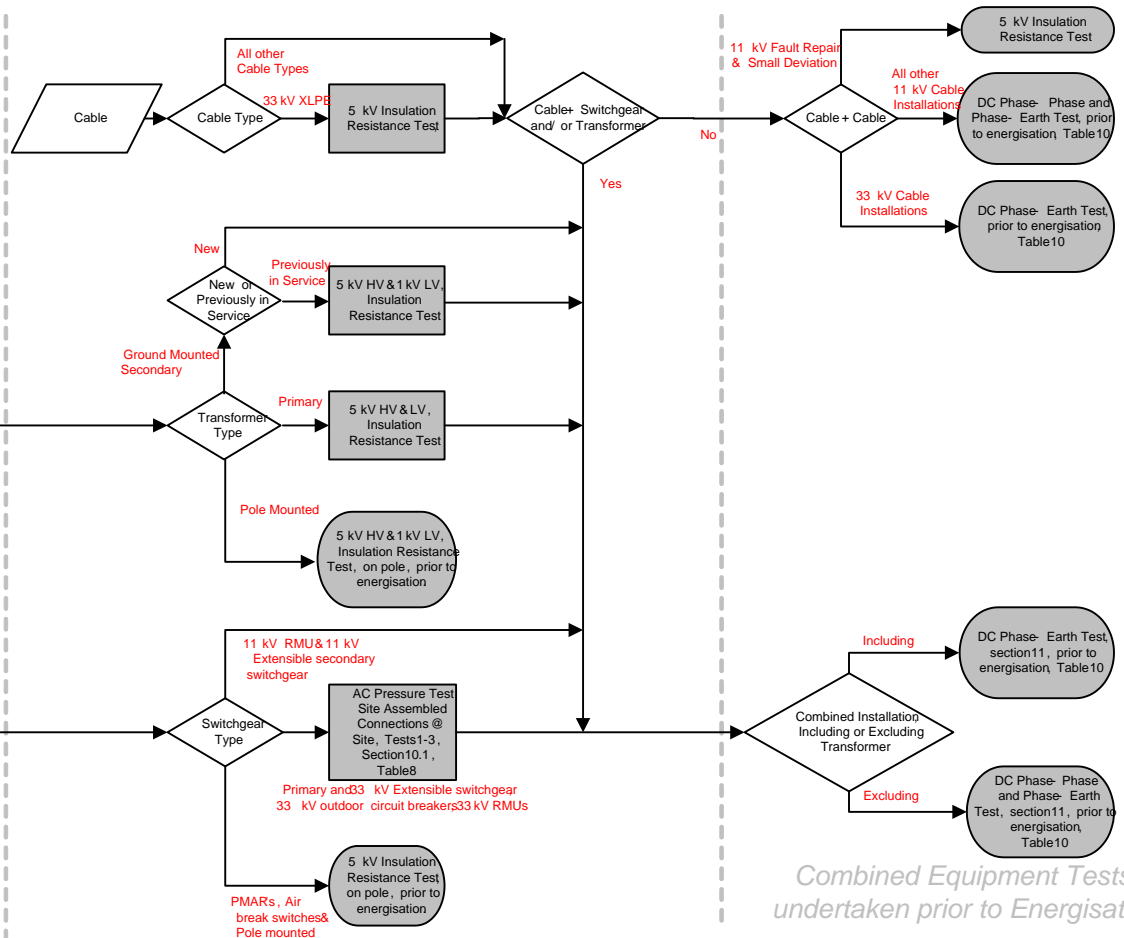
Electrical Insulation Testing of HV Equipment up to 33kV:

Appendix2 Flow Chart

Transformers

Switchgear

Voltage Transformers



Discrete Equipment Tests Prior To Site

Discrete Equipment Tests undertaken at Site

Combined Equipment Tests undertaken prior to Energisation

Table 8

| Rated Voltage (kV) | AC test voltage (kV rms) | |
|--------------------------|--------------------------|-----------------------|
| | New Equipment | Previously in Service |
| 3.3 | - | 4 |
| 6.6 | - | 8 |
| 11 | 22.4 | 12 |
| 22 | 40 | 25 |
| 33 | 56 | 36 |
| Test Duration - 1 minute | | |

Tables 9 & 10

| Rated Voltage (kV) | DC test voltage (kV) | |
|---------------------------|----------------------|---------------|
| | Phase - Phase | Phase - Earth |
| 3.3 | 5 | 3 |
| 6.6 | 10 | 6 |
| 11 | 17 | 10 |
| 22 | 34 | 20 |
| 33 | 51 | 30 |
| Test Duration - 5 minutes | | |