

# South West Scotland Connections Project Spring Update 2014



## Part A Work In progress - Coylton substation to New Cumnock substation and associated overhead line

There will be increased activity in the area while work continues on extending Coylton substation. Along the overhead line route access tracks and preparations for the tower construction will be created. At the Meikle Hill site which is called New Cumnock civil works for the new substation platform will be carried out. There will be an increase in traffic on the surrounding roads to allow materials to move to and from sites along routes agreed with the local authority.

Preparation and construction of site accesses are an important factor in engineering projects. SP Energy Networks seek to ensure that all workers, plant and materials move to and from sites in the safest manner possible, whilst minimising disturbance to local traffic flows and ensuring public safety is maintained at all times.

### Coylton Substation



Following consent being granted in December 2012 work started extending the existing substation by 0.5 hectares.

Work is well under way and, once completed, this will house the equipment required to connect the new overhead line.

Works here are now contained within the substation and should be complete by the end of 2014.

## **New Overhead Line - Coylton Substation to New Cumnock Substation**

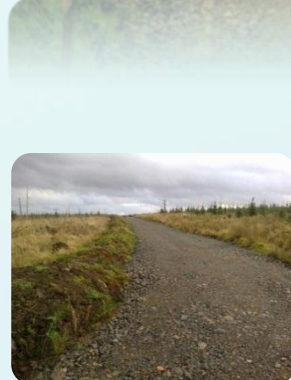


Along the overhead line route access tracks will be created at necessary points which will provide construction access to the tower locations and the working areas required to build the towers.

Fencing contractors are working at a number of sites to fence off working areas creating a safe environment for the works to be carried out. Fencing is constructed around work areas to ensure the safety of the public, construction workers and livestock. These access tracks and working areas will, for the most part, be temporary features with land being restored and reinstated to a high standard.

There will be an increase in activity in the area through 2014 as work progresses on the construction of the towers.

This work is expected to be completed by the Summer of 2015.



### **New Cumnock Substation**



Work underway at the substation location includes the installation of a site compound with temporary offices. Work has also started to clear and level the area that will create the concrete platform. This platform will provide the base for the substation and house the mechanical and electrical infrastructure to be installed.

This substation will collect electricity from proposed wind farms and transform it into a suitable voltage to transmit along the new overhead line and into the existing electricity network at Coylton Substation. Construction on this site will continue to late Summer 2015.