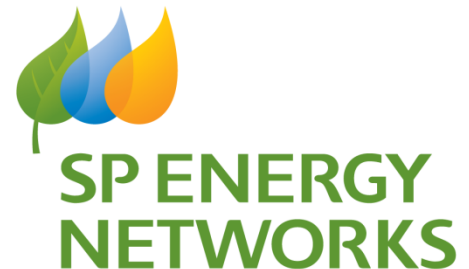


# SWS Connections Project

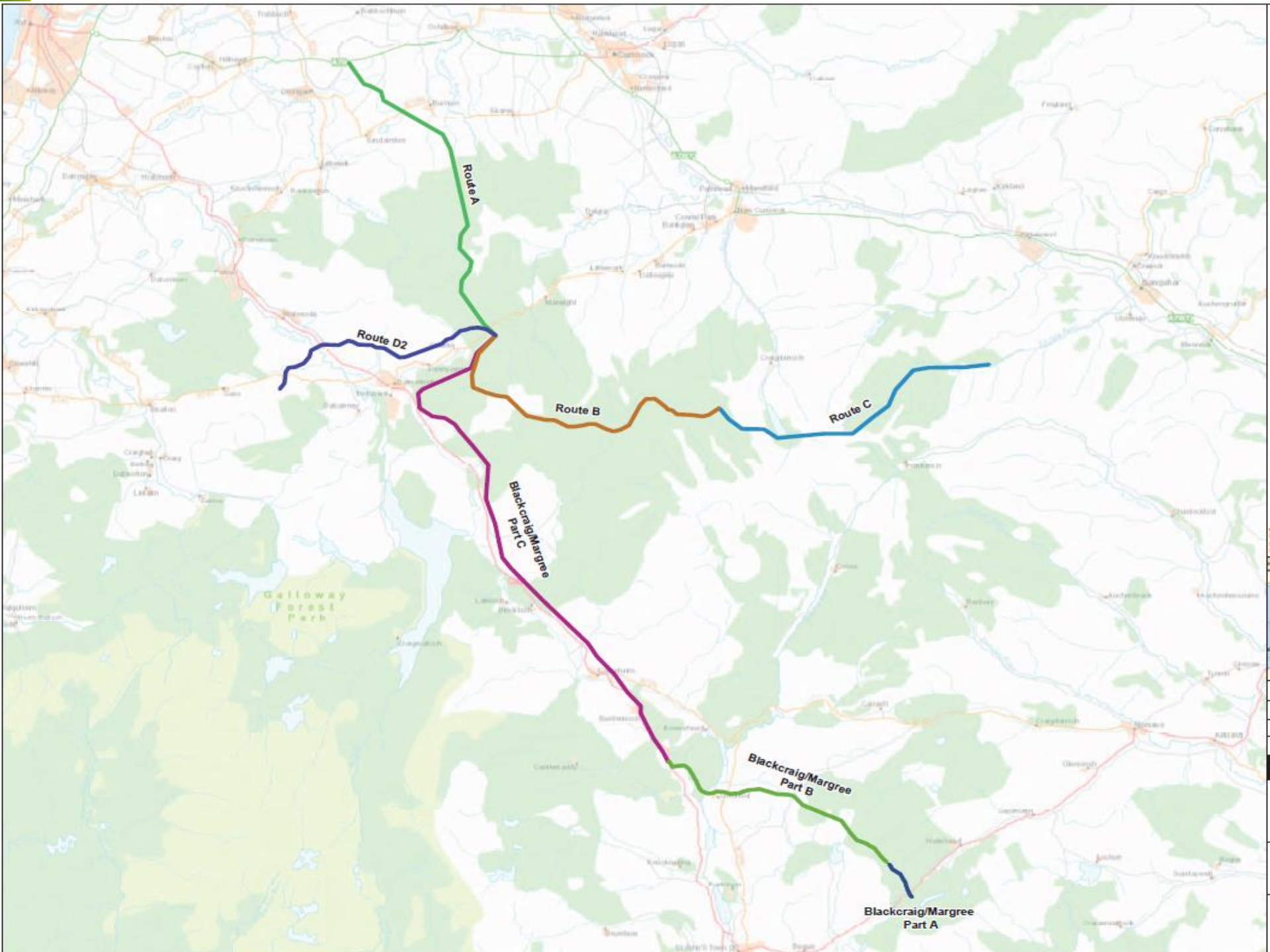
**Community Liaison Group**

**19<sup>th</sup> June 2017**



# Southwest Scotland Project

- Parts B, C,D and D2 Status
- Main activities
- Community Liaison update



## Parts B, C,D and D2 Status

- Parts A and D2 constructed, energised.
- Part B partially energised.
- Parts C and D construction ongoing.
- Dun Hill S/S built. Landscaping due Q4 2017.

# Progress Summary

	Route B	Route C	Route D
SWS	PROGRESS	PROGRESS	PROGRESS
WAYLEAVES	100%	100%	100%
PRELIMINARY	100%	100%	88%
TREE CUTTING	100%	100%	100%
FENCE ACTIVITIES	0%	0%	33%
CIVIL WORKS	100%	1%	65%
TOWER WORKS	98%	1%	14%
WIRING	71%	0%	0%

# Stone Removal

- Traffic Management Plan likely requirement for stone on public roads.
- Some stone roads retained subject to consent.
- Possible stone use for quarry restoration.
- Para 19 stone for project track restoration.

# Restoration Progress

- Part A - Ongoing
- Part B – To be initiated summer 2017
- Part D2 - Complete
- Part C – 2017/2018

# HGVs through New Cumnock

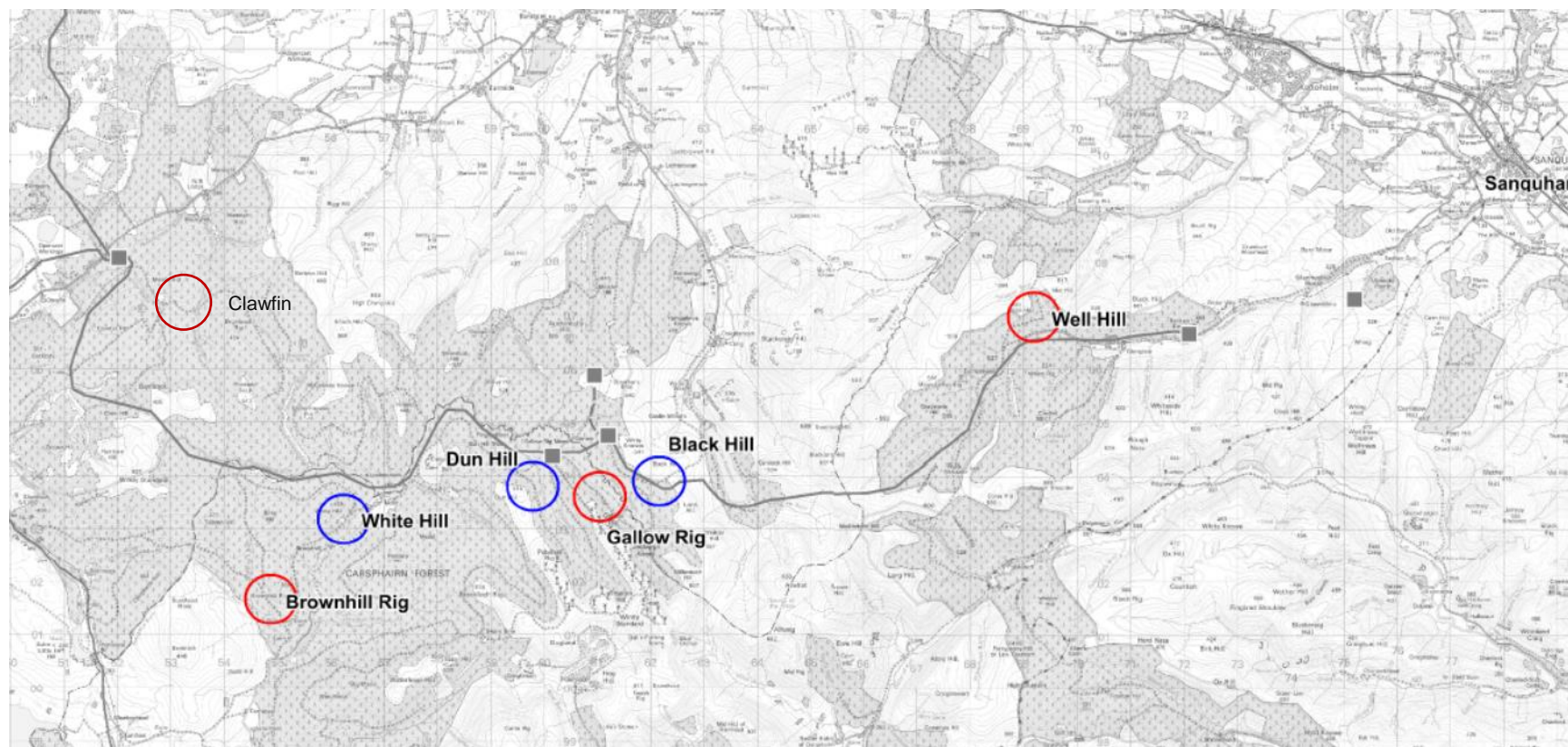
Southwest Scotland Connections – Summary of Actual and Predicted Traffic Volume Increases

Road Location	Average HGV movements per day over entire construction period (predicted)	Average HGV movements per day during the month with the highest total number of predicted vehicle movements (predicted)	Average HGV movements per day in Oct 2016 (actual)	Average HGV movements per day in Nov 2016 (actual)	Average HGV movements per day in Dec 2016 (actual)	Average HGV movements per day in Jan 2017 (actual)	Average HGV movements per day in Feb 2017 (actual)	Average HGV movements per day in Mar 2017 (actual)	Average HGV movements per day in Apr 2017 (actual)
B741 (between New Cumnock Substation access point and A76)	20	74	7	6	5	3	6	9	8
A76 (between A70 and B741)	38	151	8	7	6	5	7	7	6
A76 (between B741 and Sanquhar)	20	145	1	1	2	3	3	2	3

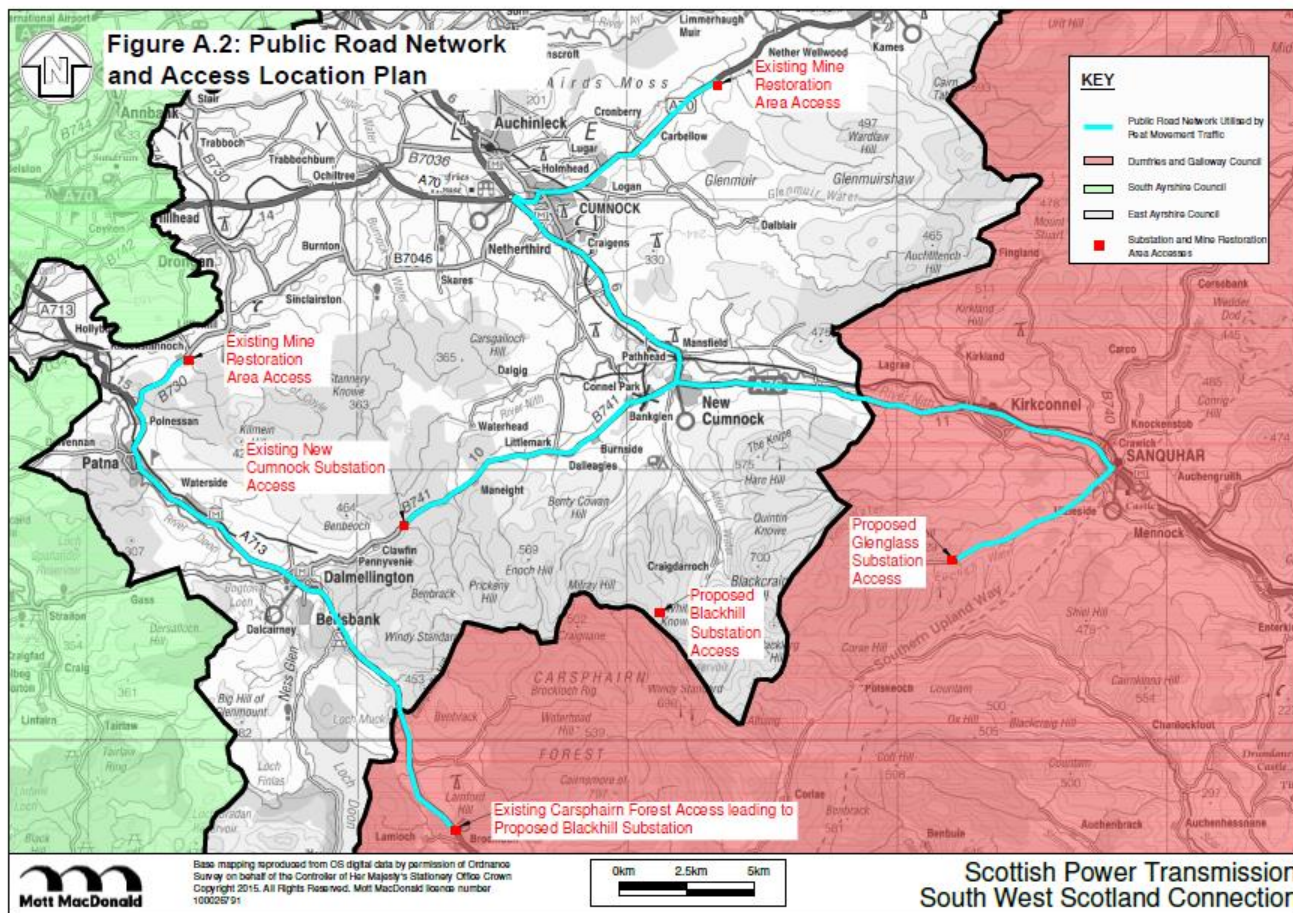
# Main Activities

- Construction of Parts C and D
- Install access roads for C and D
- Removal of stone access roads for B
- Peat to site at Patna using A713

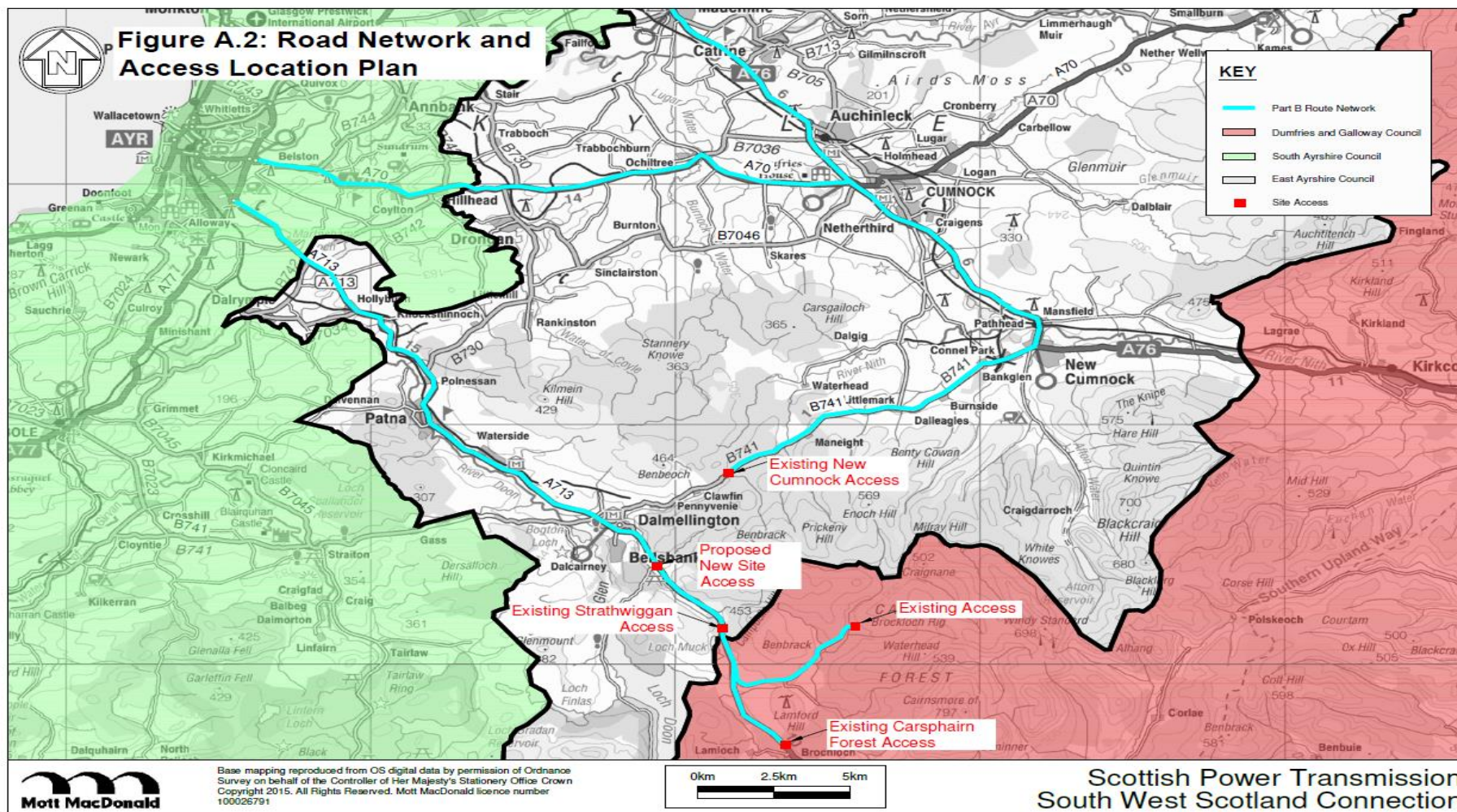
# Quarry Locations



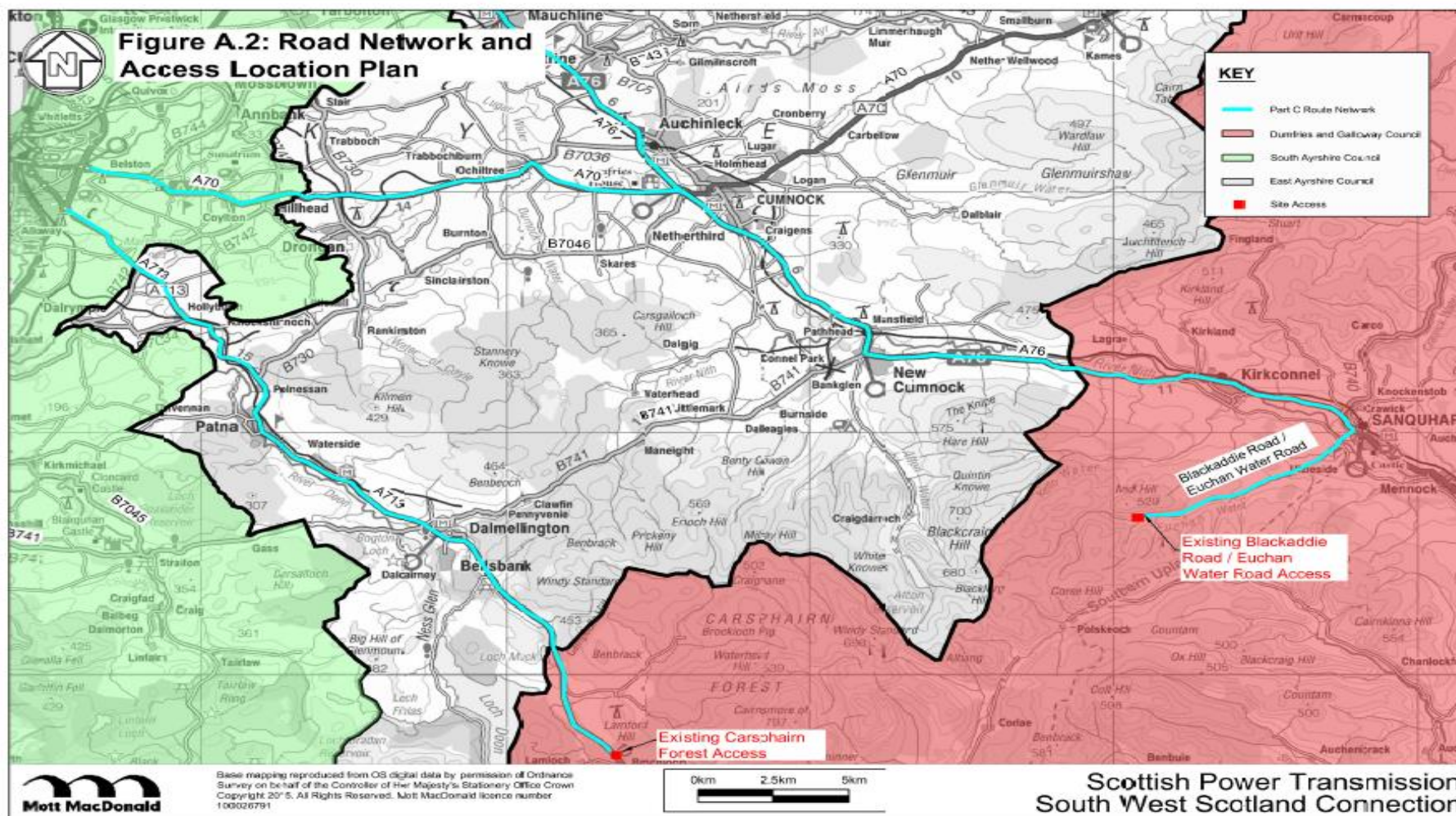
# Approved Peat Routes



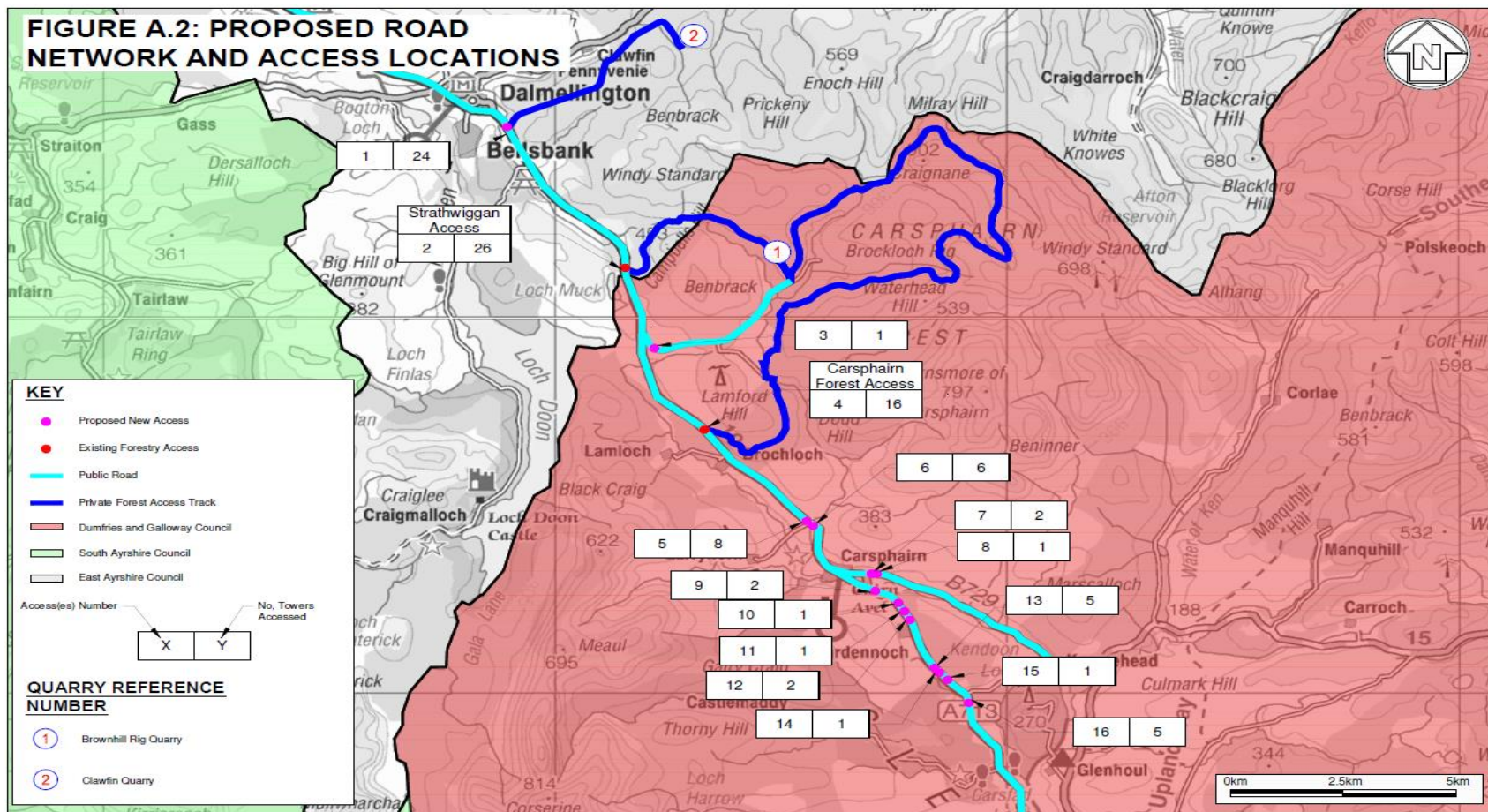
# Part B Construction Traffic Routes



# Part C Construction Traffic Routes



# Part D Construction Traffic Routes



# Community Liaison update

- Community Liaison Scheme in place to ensure close liaison with local community representatives
- Scope for range of measures as requested, including:
  - Community Information Sessions - Awareness of sessions via Community Liaison Group representatives along with advertisements placed in the local press.
  - Notifications - Endeavour to notify residents who may be directly affected by our works.
  - Community/Interest Groups - Attendance at meetings by relevant team members and updates on the project will be provided.
  - One on One Meetings - Update on the project and respond to any issues and concerns raised.
- Landowners - Will continue to be informed by the SPEN Wayleaves officers.

Support Local Community - New Cumnock Kids Charity Day

Contact:

Email - Contact [swsproject@scottishpower.com](mailto:swsproject@scottishpower.com)

Phone - Community Relations 07516461129

Information available at

[www.spenergynetworks.co.uk/pages/south\\_west\\_scotland\\_connections\\_project.asp](http://www.spenergynetworks.co.uk/pages/south_west_scotland_connections_project.asp)

Thank you.