

Your Views on Our plans: Site Security

RIIO-ED2 Stakeholder Engagement



What SP Energy Networks Do?

SP Energy Networks own and operate the electricity distribution network in the Central Belt & South of Scotland (SP Distribution) serving 2 million customers, and in Merseyside and North Wales (SP Manweb) serving 1.5 million customers. Our networks include over 33,000 substations, which are a mixture of purpose-built structures, outdoor compounds, and embedded locations. Our substations house the rest of our assets, which keep vital electricity supplies safe, secure and reliable.

We are seeking your views on our investment plans for the site security of our substations to prevent unauthorised access and protect the public from the risks of electrical assets during our next regulated price control period (known as RIIO-ED2) running from 2023 to 2028.

Our Site Security Strategy

The security of our substations is critical. Our sites contain live equipment responsible for ensuring a safe electricity supply for our customers, not only could the theft or damage of our assets lead to prolonged power-cuts, but unauthorised access presents a real safety risk. By enhancing and maintaining the security of our sites we will prevent unauthorised access from members of the public who could otherwise put themselves at risk.

It is our legislative requirement under The Electricity Act, and [Part 3 of the ESQCR regulations](#) to ensure safety and security at all our substations through application of effective preventative access measures.

We regularly inspect all our sites and closely monitor incidents of break-ins, theft or unauthorised access. At high risk and critical locations, we deploy enhanced security measures including alarms, CCTV, smart locks and high security fencing.

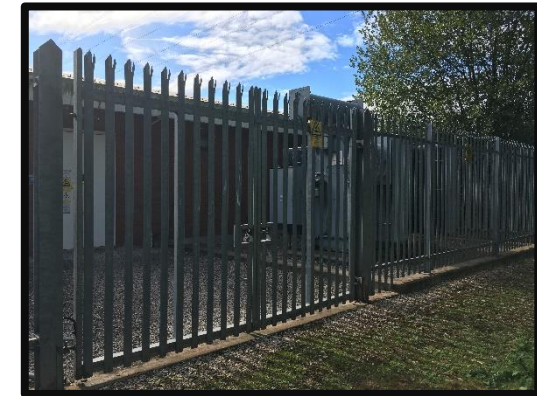
We have found that the application of smart locks has significantly improved site security in our SP Manweb licence area, whilst also improving our visibility of authorised site visits, we intend to continue the roll-out of this technology. We also inspect our higher criticality sites more frequently to ensure they are secure.

We are keen to consult with our stakeholders and appropriate interest groups to better understand your views, concerns and priorities to help us develop robust site security plans.

Gathering Your Views on our Plans

What are your views on the application of Smart Locks or other modern security solutions?

Do you have any views on how we should prioritise sites for enhanced site security measures?



Top: Digital Smart Lock
Bottom: Primary substation with high security fencing