



Chipped



Eco Pile



Logged

Contact us

**POWER CUT?
CALL 105**



- If you have a Power Cut or in an Emergency Situation, please call:-
- **Priority Services** - in the event of a power cut, our teams work around the clock to restore your electricity as quickly as possible. We appreciate for some customers this may be particularly distressing and that's why we offer extra support to customers who feel they need our help.

You can join our Priority Services Register if you:

- Are over the age of 60
- Have a special communication need
- Depend on electricity for home or medical care
- Have a child under 5 years of age
- Have chronic illness
- Or just feel you need a little extra help



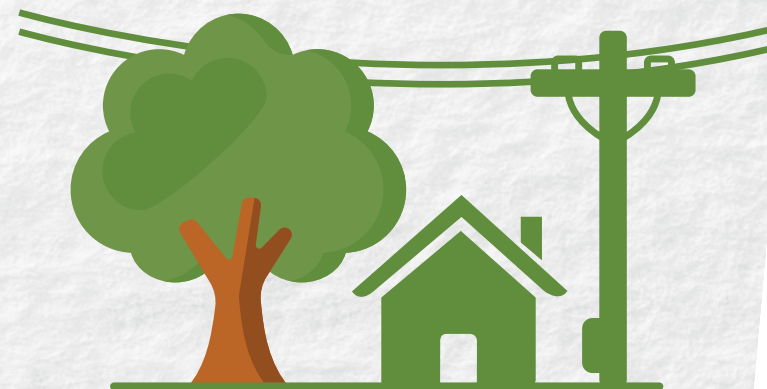
Sign up for the priority services register by calling us on 0330 10 10 167.

For general tree safety advice and enquiries, please contact us on:-

- 🌐 www.spenergynetworks.co.uk
- ✉ customercare@spenergynetworks.com
- ☎ 0330 10 10 444

Safety Matters

Dangers of trees near power lines



Introduction

This leaflet gives guidance on what to do if you have trees growing near overhead electric power lines around your property and what to do in an emergency.

The electricity network carries voltages ranging from 230 volts (domestic) up to 400,000 volts (both can be lethal). It's safe in normal conditions, but each year people get injured and even killed when they accidentally come too close to or into contact with it. So it's important you know how to stay safe.

WHAT TO DO, WHAT TO KNOW

- Trees close to overhead power lines can be extremely dangerous or can cause faults and power interruptions.
- **DO NOT** climb or allow others to climb, trees that are within the proximity of overhead lines or equipment.
- Never attempt to undertake tree cutting work near an overhead power line either yourself or by your own contractor – the consequences can be fatal.
- Please contact us immediately on **0330 10 10 444** if you notice trees growing close to overhead power lines. This will be assigned to a SP Energy Networks local Tree Co-ordinator who will be able to assist you.
- Any tree cutting work undertaken by SP Energy Networks will be at **NO EXTRA COST TO YOU.**

SP ENERGY NETWORKS LEGAL REQUIREMENTS

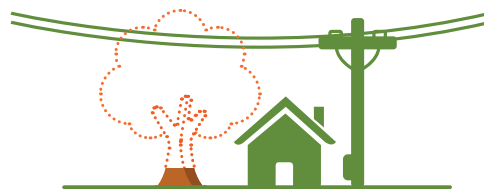
- SP Energy Networks have a legal obligation to ensure trees are kept at a safe distance from the overhead power lines as stated in the Electricity Safety Quality and Continuity (Amended) Regulations 2006 and the Electricity Act 1989.
- All SP Energy Networks contracting staff are suitably trained and authorised to work near the overhead power lines.
- SP Energy Networks currently have 2 tree cutting programs.
 - ENATS 43-8 – safety clearance program
 - ETR 132 – network resilience

ENATS 43-8: The ENATS 43-8 safety clearance program ensures trees are kept at a safe distance from the overhead power lines. This eliminates the risk of the public climbing trees and coming into contact with the overhead power line.

Crown Reduce



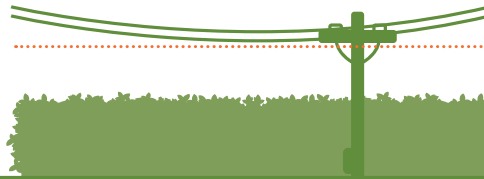
Fell



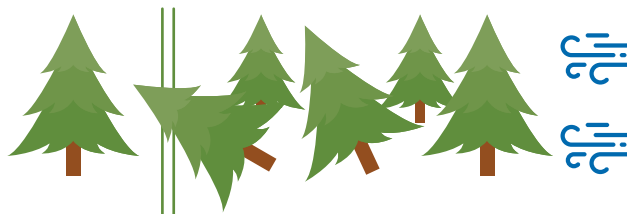
Selective Pruning



Reduce



ETR 132: The ETR 132 program ensures network resilience during adverse weather conditions and reduces the interruptions to your power supply.



Industry standard safety clearance

Insulated conductors	0.5 metres
Uninsulated conductors	3 metres

- SP Energy Networks manage a 3 year cyclic tree cutting program.
- Our contractors will contact you to discuss and agree any work required. This will take into consideration the growth rate of trees to ensure they do not encroach on the above Safety Clearance guidelines within the 3 years.
- They will carry out the work at a time suitable to you and dispose of any waste as per your requirements.

This work is essential for us to maintain a safe, reliable power supply to your home and community.

General Safety Information

- Always assume power lines are LIVE, even if they've fallen to the ground, are broken or aren't sparking.
- Stay away from any person/object in contact with an overhead line and keep others away...touching them/it can be fatal.
- Phone 105, SP Energy Networks will be able to make the line safe remotely.
- Damaged lines can stay LIVE or be re-energised automatically or remotely without warning if SP Energy Networks isn't aware of an incident.
- NEVER touch overhead power lines.
- Almost any material can conduct electricity –
 - Chain Saws
 - Extendable hedge cutters
 - Window cleaning poles
 - Ladders
 - TV Aerials
 - Scaffolding
 - Kites
 - Fishing Rod
 - Tree SAP
 - Wet branches
- Rubber boots won't protect you.

You do not have to be in direct contact with electricity for it to be fatal.