

Lorg Wind Farm Grid Connection

Environmental Impact Assessment Report

Volume 2: Part 3

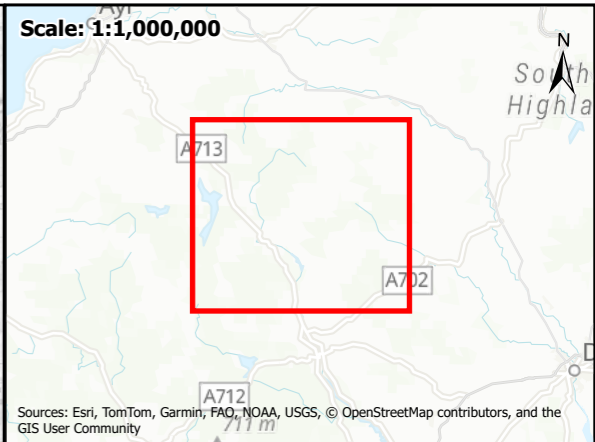
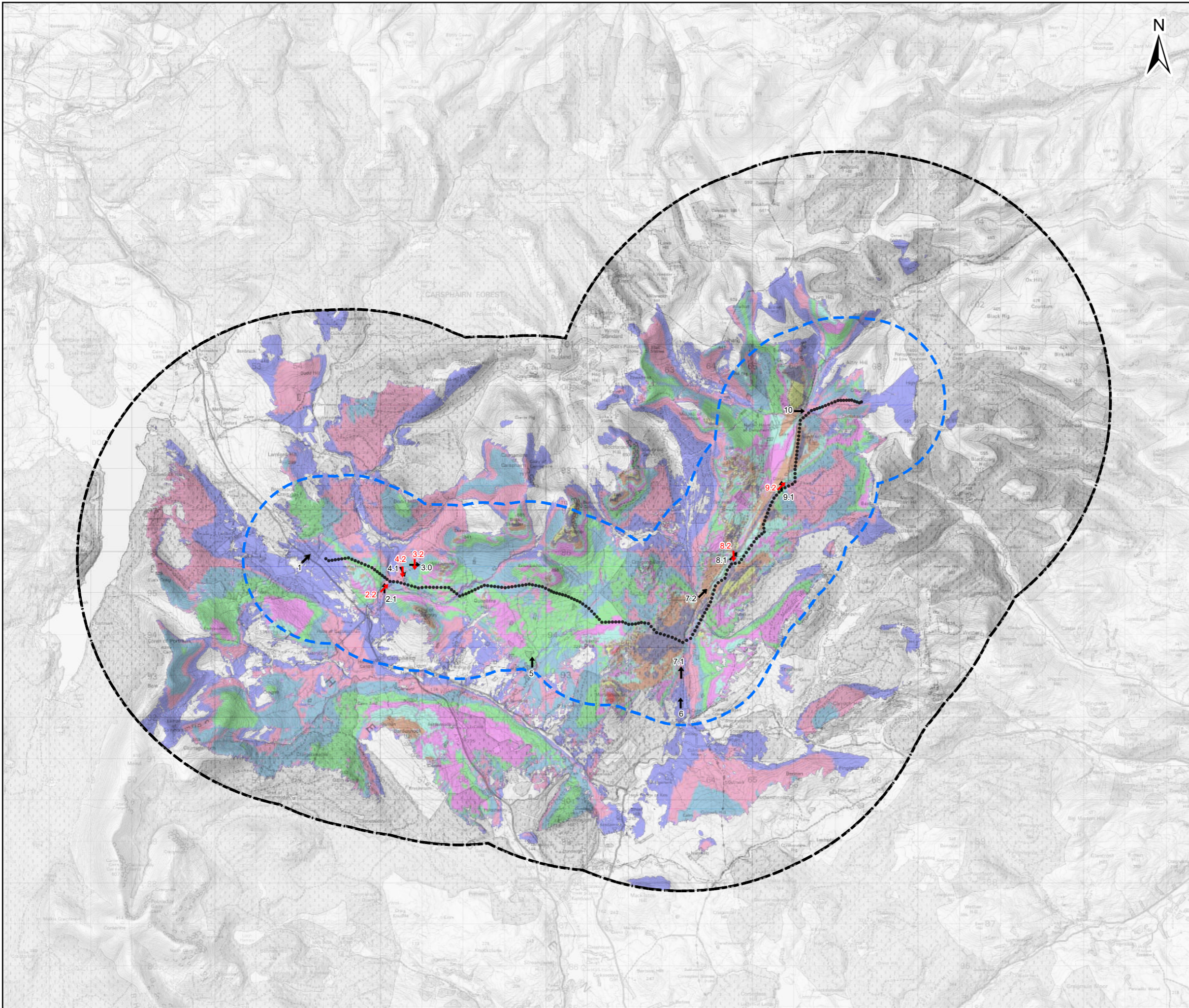
Figure 7.1

Figure 7.2

Figure 7.3

Figure 7.4

Document Path: \\luk.wspgroup.com\central data\Projects\70025617 - SPEN Longburn Lorg OHLE Models and Drawings\99 GIS\GIS\ArcGIS Pro\Long\EA\07_Landscape\Figure 7.1 - Zone of Theoretical Visibility and Viewpoint Locations.aprx



Key


- Proposed Pole Location
- 2 km Buffer
- 6 km Buffer
- Viewpoint

Zone of Theoretical Visibility


No Pole Visible

- 1- 10
- 10 - 20
- 20 - 30
- 30 - 40
- 40 - 50
- 50 - 60
- 60 - 70
- 70 - 80
- 80 - 90
- 90 - 100
- 100 - 110
- 110 - 124

0 2 5 km



Client:



Project:

Lorg Wind Farm Grid Connection

Title:

Figure 7.1 - Zone of Theoretical Visibility

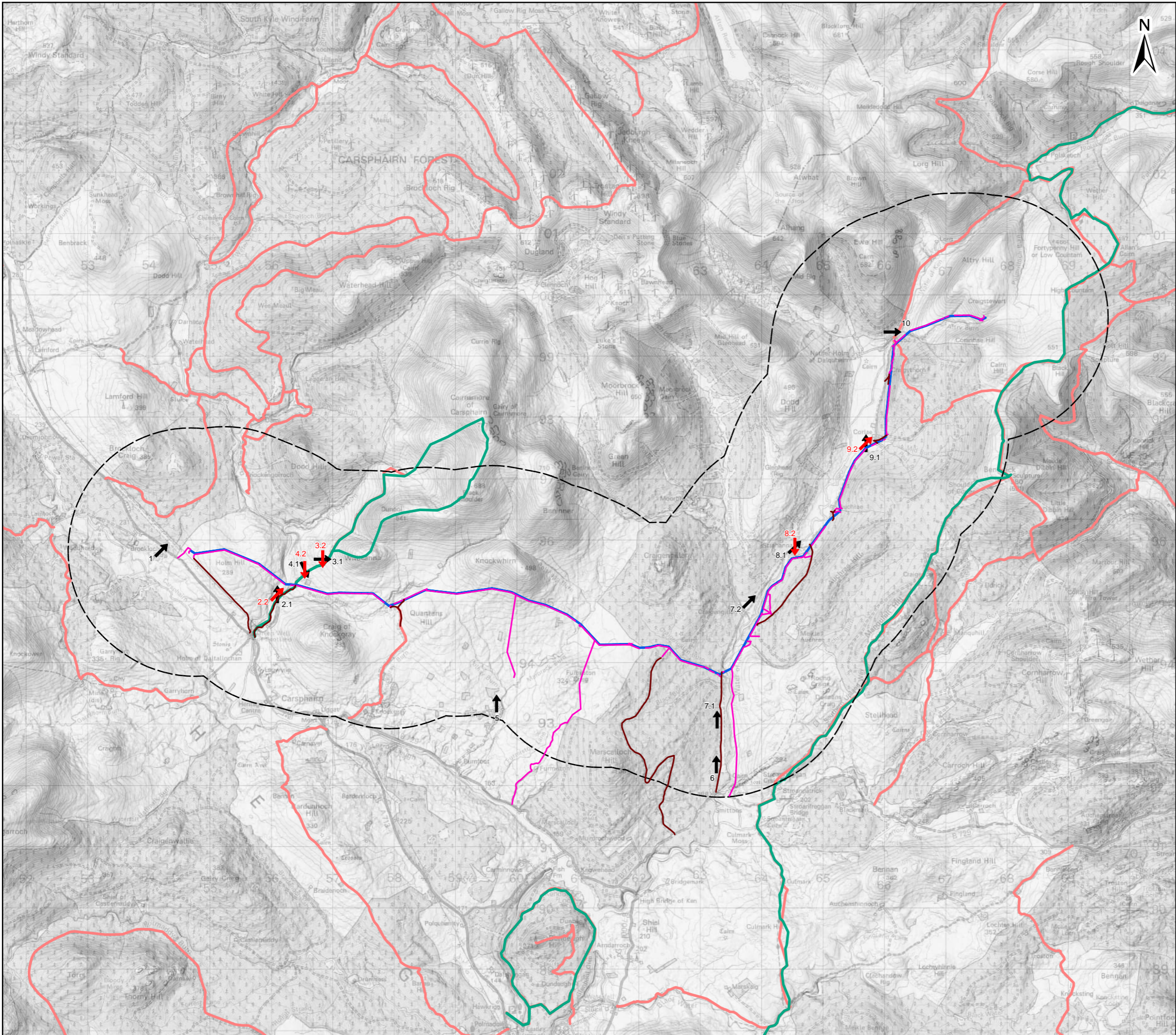
Date: 25/04/2025 Scale: 1:90,000 @ A3

Drawn: AS Checked: IM Approved: AF

Drawing Number: 70025617-WSP-LORG-021

Note: The ZTV is calculated based on the Proposed Pole Locations with structure height above ground(m) and a viewer height of 1.6m above ground level. The terrain model assumes bare ground and is derived from OS Terrain 5 data. Earth curvature and atmosphere refraction have been taken into account. The visibility is cut at 6km from each individual pole. ZTV has been symbolised according to the number of poles likely to appear visible from each cell.

Document Path: \\uk.wspgroup.com\Central Data\Projects\70025617 - SPEN Longburn Long OHLE Models and Drawings\99 GIS\GIS\ArcGIS Pro\Log\ElA\07_Landscape\Figure 7.2 - Viewpoint Location Plan.aprx



Scale: 1:600,000

Sources: Esri, TomTom, Garmin, FAO, NOAA, USGS, © OpenStreetMap contributors, and the GIS User Community

Key

- Proposed 132kV Trident OHL
- Existing Access
- Proposed Access
- 2 km Buffer
- Viewpoints
- Alternative View From Viewpoint Location
- Long-Distance Recreational Routes
- Core Paths

0 2 3 km

Client

Project

Lorg Wind Farm Grid Connection

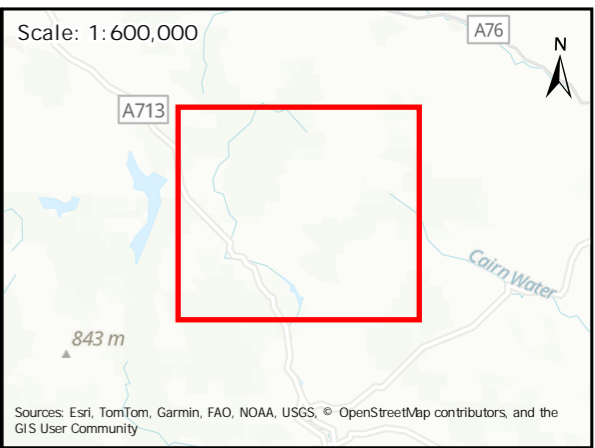
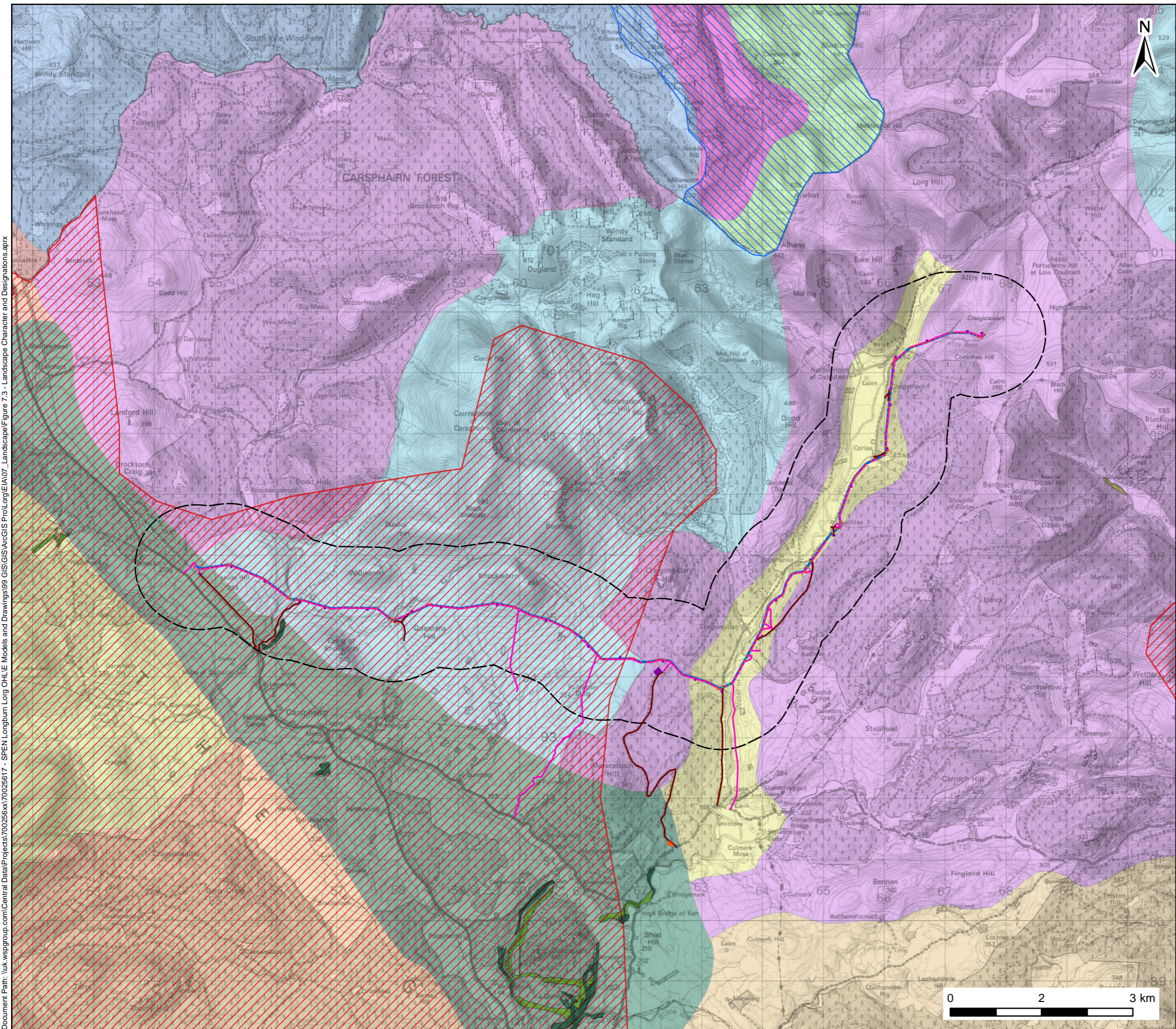
Title

Figure 7.2 - Viewpoint Location

Date: 11/08/2025 Scale: 1:60,000 @ A3

Drawn: NB Checked: AS Approved: AF

Drawing Number: 70025617-WSP-LORG-022



Key

- Proposed 132 kV Trident OHL
- Existing Access
- Proposed Access
- Proposed Laydown Area
- Proposed Working Area
- Proposed Scaffolding
- 2 km Buffer
- East Ayrshire Sensitive Landscape Area - Uplands and Moorlands
- Dumfries and Galloway Regional Scenic Area
- Ancient (of semi-natural origin)
- Long-Established (of plantation origin)
- Other (on Roy map)

Landscape Character Area

- Foothills - Ayrshire
- Foothills - Dumfries & Galloway
- Foothills with Forest - Dumfries & Galloway
- Narrow Wooded River Valley - Dumfries & Galloway
- Rugged Uplands - Dumfries & Galloway
- Southern Uplands - Ayrshire
- Southern Uplands - Dumfries & Galloway
- Southern Uplands with Forest - Ayrshire
- Southern Uplands with Forest - Dumfries & Galloway
- Upland Glen - Ayrshire
- Upper Dale - Dumfries & Galloway

wsp

Client

Project

Lorg Wind Farm Grid Connection

Title

Figure 7.3 - Landscape Character and Designations

Date: 05/08/2025 Scale: 1:60,000 @ A3
Drawn: AS Checked: IM Approved: AF
Drawing Number: 70025617-WSP-LORG-023

Document Path: \\uk.wspgroup.com\Central Data\Projects\70025617 - SPEN Longburn Lorg OHL Models and Drawings\99 GIS\GIS\ArcGIS Pro\Log\ElA\07 Landscape Character and Designations.aprx

VIEWPOINT 1 - View from A713, by entrance to residential property Brockloch Tower.

BASELINE PANORAMA



Viewpoint 1 - View from A713, by entrance to residential property Brochloch Tower.

Viewpoint Type: Type 1
Projection: Cylindrical
Viewpoint Grid Reference: NX 54284 95840
Viewpoint Elevation in mAOD: 216m

Direction of View: North-East
Horizontal Field Of View: 90 degrees
Vertical Field of View: 22 degrees
Distance to Site: 399m (Approx)

Enlargement Factor: 100% @ A1
Photographic Equipment: Canon 6D MKII & 50mm Lens
Date Taken: 28.09.2023 (Autumn)
Camera Height: 1.6m above ground

This image provides landscape and visual context only
View flat at a comfortable arm's length. If viewing on a screen
enlarge to full screen height.



VIEWPOINT 2-1 - View from PRow adjacent to Benloch Burn

BASELINE PANORAMA



Viewpoint 2-1 - View from PRow adjacent to Benloch Burn

Viewpoint Type: Type 1
Projection: Cylindrical
Viewpoint Grid Reference: NX 56176 95118
Viewpoint Elevation in mAOD: 202m

Direction of View: North
Horizontal Field Of View: 90 degrees
Vertical Field of View: 22 degrees
Distance to Site: 221m (Approx)

Enlargement Factor: 100% @ A1
Photographic Equipment: Canon 6D MKII & 50mm Lens
Date Taken: 28.09.2023 (Autumn)
Camera Height: 1.6m above ground

This image provides landscape and visual context only
View flat at a comfortable arm's length. If viewing on a screen
enlarge to full screen height.



VIEWPOINT 2-2 - View from PRow adjacent to Benloch Burn

BASELINE PANORAMA



Viewpoint 2-2 - View from PRow adjacent to Benloch Burn

Viewpoint Type: Type 1
Projection: Cylindrical
Viewpoint Grid Reference: NX 56176 95118
Viewpoint Elevation in mAOD: 202m

Direction of View: North-East
Horizontal Field Of View: 90 degrees
Vertical Field of View: 22 degrees
Distance to Site: 221m (Approx)

Enlargement Factor: 100% @ A1
Photographic Equipment: Canon 6D MKII & 50mm Lens
Date Taken: 28.09.2023 (Autumn)
Camera Height: 1.6m above ground

This image provides landscape and visual context only
View flat at a comfortable arm's length. If viewing on a screen
enlarge to full screen height.



VIEWPOINT 3-1 - View from PRoW to Cairnsmore of Carsphairn

BASELINE PANORAMA



VIEWPOINT 3-2 - View from PRow to Cairnsmore of Carsphairn

BASELINE PANORAMA



Viewpoint 3-2 - View from PRow to Cairnsmore of Carsphairn

Viewpoint Type: Type 1
Projection: Cylindrical
Viewpoint Grid Reference: NX 56915 95688
Viewpoint Elevation in mAOD: 303m

Direction of View: South
Horizontal Field Of View: 90 degrees
Vertical Field of View: 22 degrees
Distance to Site: 541m (Approx)

Enlargement Factor: 100% @ A1
Photographic Equipment: Canon 6D MKII & 50mm Lens
Date Taken: 28.09.2023 (Autumn)
Camera Height: 1.6m above ground

This image provides landscape and visual context only
View flat at a comfortable arm's length. If viewing on a screen
enlarge to full screen height.



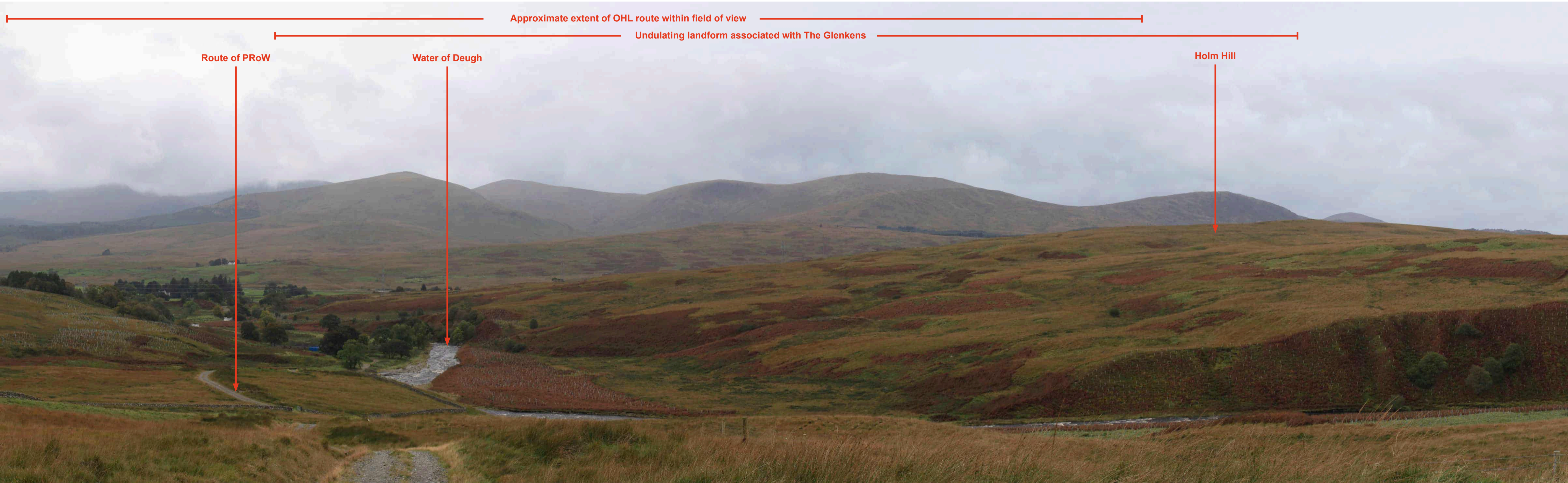
VIEWPOINT 4-1 - View from PRow to Cairnsmore of Carsphairn

BASELINE PANORAMA



VIEWPOINT 4-2 - View from PRow to Cairnsmore of Carsphairn

BASELINE PANORAMA



Viewpoint 4-2 - View from PRow to Cairnsmore of Carsphairn

Viewpoint Type: Type 1
Projection: Cylindrical
Viewpoint Grid Reference: NX 56621 95512
Viewpoint Elevation in mAOD: 258m

Direction of View: South
Horizontal Field Of View: 90 degrees
Vertical Field of View: 22 degrees
Distance to Site: 325m (Approx)

Enlargement Factor: 100% @ A1
Photographic Equipment: Canon 6D MKII & 50mm Lens
Date Taken: 28.09.2023 (Autumn)
Camera Height: 1.6m above ground

This image provides landscape and visual context only
View flat at a comfortable arm's length. If viewing on a screen
enlarge to full screen height.



VIEWPOINT 5 - View from farm track at Marbrack

BASELINE PANORAMA



Viewpoint 5 - View from farm track at Marbrack

Viewpoint Type: Type 1
Projection: Cylindrical
Viewpoint Grid Reference: NX 59752 93337
Viewpoint Elevation in mAOD: 217m

Direction of View: North
Horizontal Field Of View: 90 degrees
Vertical Field of View: 22 degrees
Distance to Site: 1.8km (Approx)

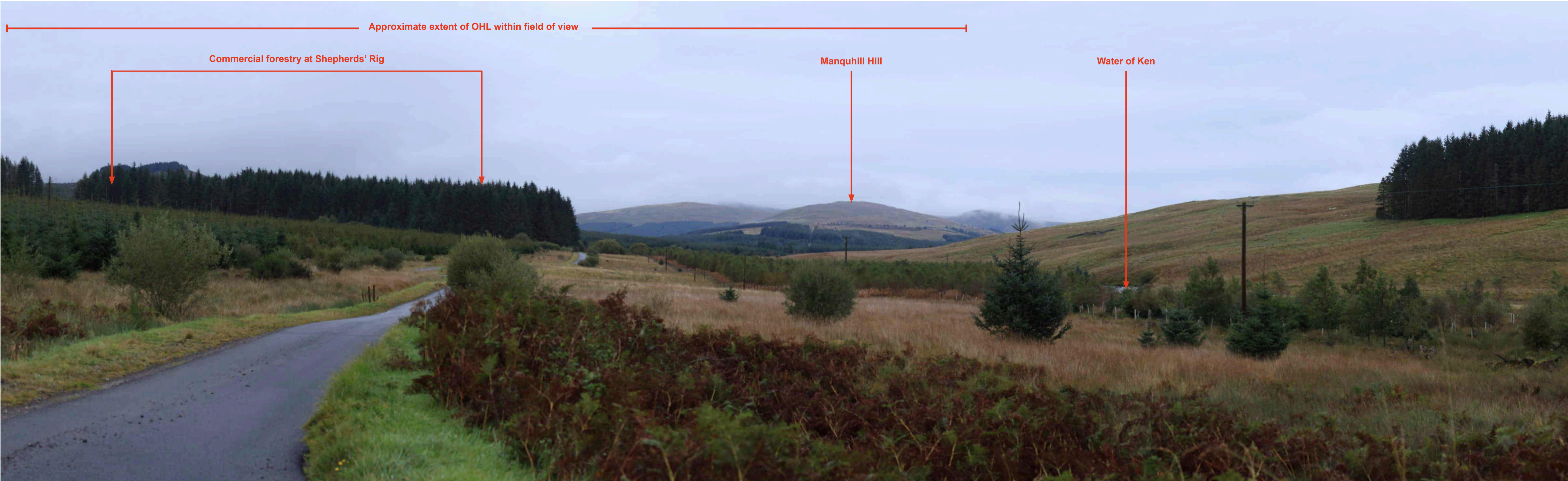
Enlargement Factor: 100% @ A1
Photographic Equipment: Canon 6D MKII & 50mm Lens
Date Taken: 27.09.2023 (Autumn)
Camera Height: 1.6m above ground

This image provides landscape and visual context only
View flat at a comfortable arm's length. If viewing on a screen
enlarge to full screen height.



VIEWPOINT 6 - View from unnamed road to the north of Smittons Bridge

BASELINE PANORAMA



Viewpoint 6 - View from unnamed road to the north of Smittons Bridge

Viewpoint Type: Type 1
Projection: Cylindrical
Viewpoint Grid Reference: NX 63338 92342
Viewpoint Elevation in mAOD: 201m

Direction of View: North
Horizontal Field Of View: 90 degrees
Vertical Field of View: 22 degrees
Distance to Site: 4.5m (Approx)

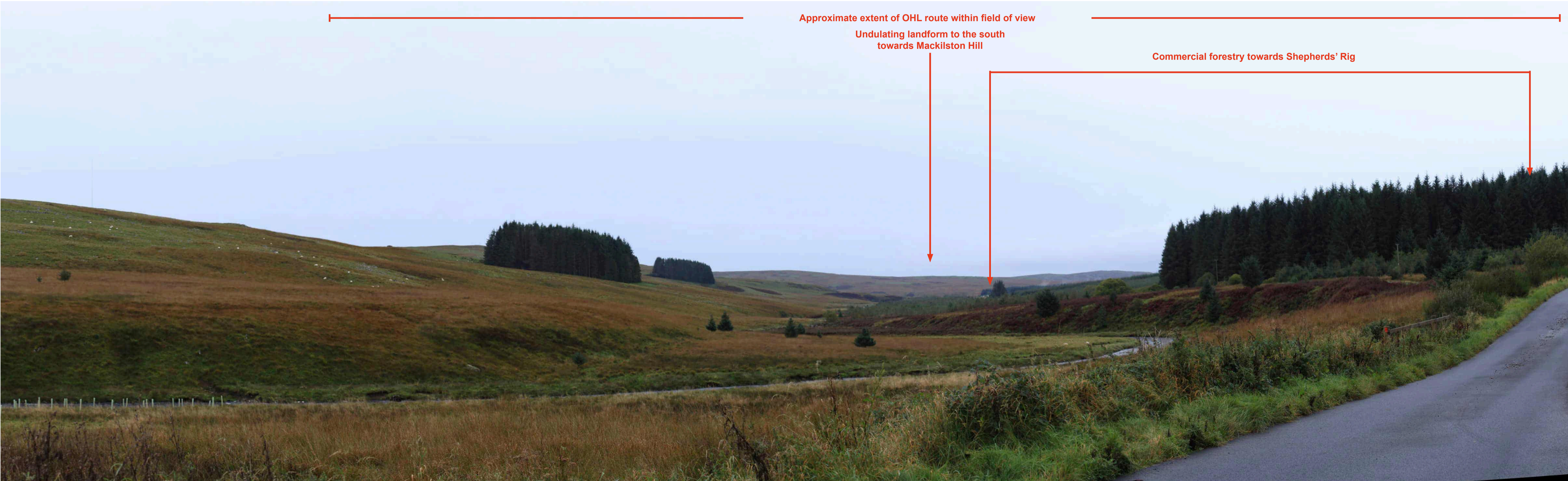
Enlargement Factor: 100% @ A1
Photographic Equipment: Canon 6D MKII & 50mm Lens
Date Taken: 27.09.2023 (Autumn)
Camera Height: 1.6m above ground

This image provides landscape and visual context only
View flat at a comfortable arm's length. If viewing on a screen
enlarge to full screen height.



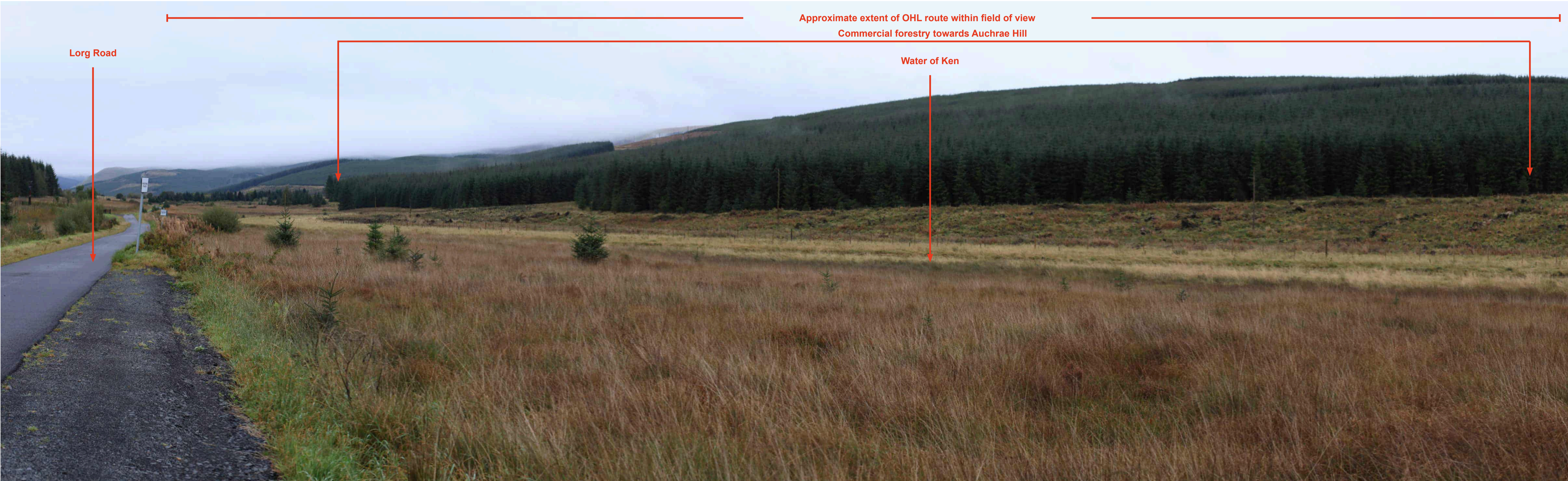
VIEWPOINT 7-1- View from Lorg Road within the Water of Ken Valley

BASELINE PANORAMA



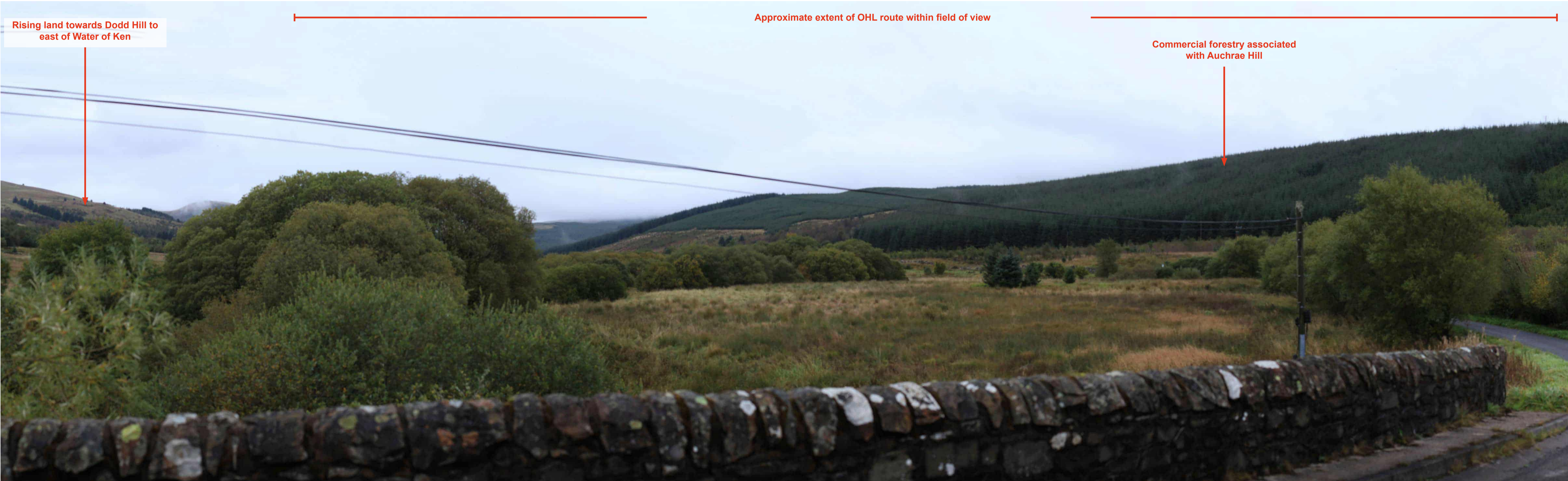
VIEWPOINT 7-2- View from Lorg Road adjacent properties at Craigengillan

BASELINE PANORAMA



VIEWPOINT 8-1 - View from adjacent River Ken Cottage B&B

BASELINE PANORAMA



Viewpoint 8-1 - View from adjacent River Ken Cottage B&B

Viewpoint Type: Type 1
Projection: Cylindrical
Viewpoint Grid Reference: NX 64619 95890
Viewpoint Elevation in mAOD: 226m

Direction of View: North-East
Horizontal Field Of View: 90 degrees
Vertical Field of View: 22 degrees
Distance to Site: 121m (Approx)

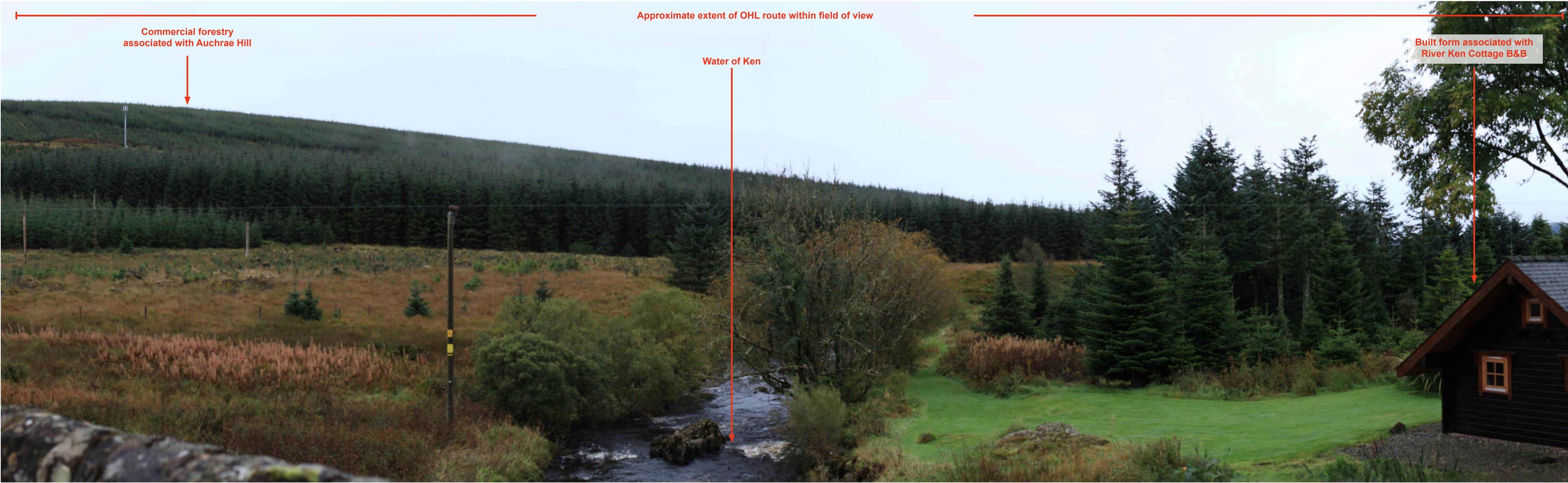
Enlargement Factor: 100% @ A1
Photographic Equipment: Canon 6D MKII & 50mm Lens
Date Taken: 27.09.2023 (Autumn)
Camera Height: 1.6m above ground

This image provides landscape and visual context only
View flat at a comfortable arm's length. If viewing on a screen
enlarge to full screen height.



VIEWPOINT 8-2 - View from adjacent River Ken Cottage B&B

BASELINE PANORAMA



Viewpoint 8-2 - View from adjacent River Ken Cottage B&B

Viewpoint Type: Type 1
Projection: Cylindrical
Viewpoint Grid Reference: NX 64619 95890
Viewpoint Elevation in mAOD: 121m

Direction of View: South
Horizontal Field Of View: 90 degrees
Vertical Field of View: 22 degrees
Distance to Site: 226m (Approx)

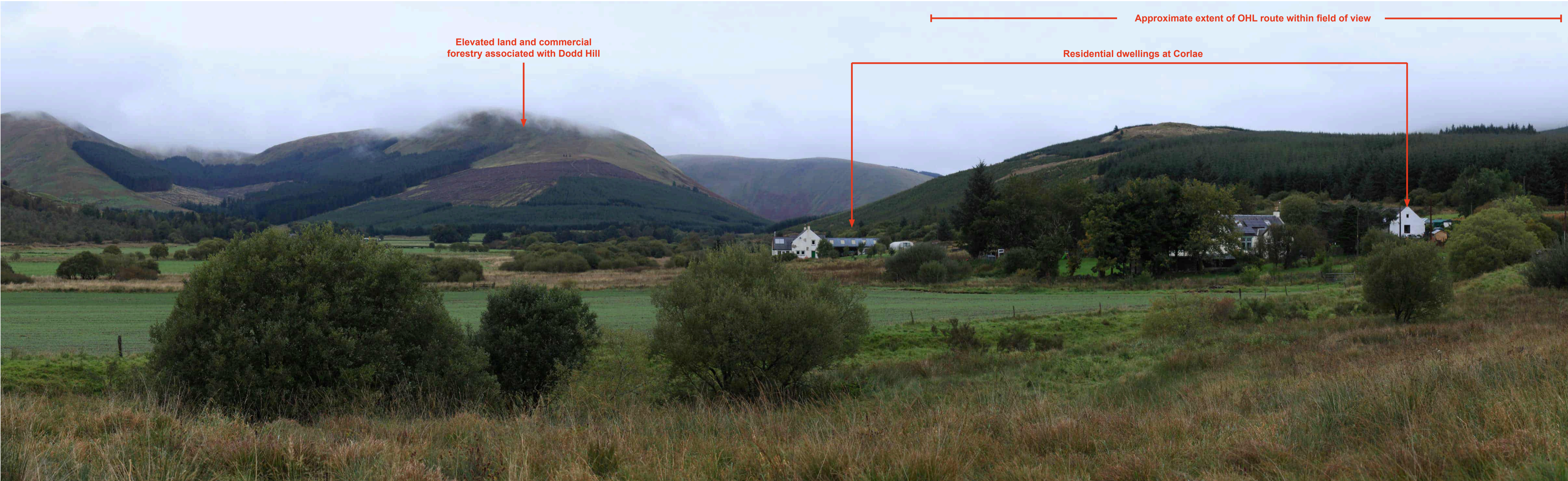
Enlargement Factor: 100% @ A1
Photographic Equipment: Canon 6D MKII & 50mm Lens
Date Taken: 27.09.2023 (Autumn)
Camera Height: 1.6m above ground

This image provides landscape and visual context only
View flat at a comfortable arm's length. If viewing on a screen
enlarge to full screen height.



VIEWPOINT 9-1 - View from residential settlement at Corlae

BASELINE PANORAMA



Viewpoint 9-1 - View from residential settlement at Corlae

Viewpoint Type: Type 1
Projection: Cylindrical
Viewpoint Grid Reference: NX 65780 97583
Viewpoint Elevation in mAOD: 246m

Direction of View: North
Horizontal Field Of View: 90 degrees
Vertical Field of View: 22 degrees
Distance to Site: 47m (Approx)

Enlargement Factor: 100% @ A1
Photographic Equipment: Canon 6D MKII & 50mm Lens
Date Taken: 27.09.2023 (Autumn)
Camera Height: 1.6m above ground

This image provides landscape and visual context only
View flat at a comfortable arm's length. If viewing on a screen
enlarge to full screen height.



VIEWPOINT 9-2 - View from residential settlement at Corlae

BASELINE PANORAMA



VIEWPOINT 10 - View from access track towards Lorg

BASELINE PANORAMA



Viewpoint 11 - View from access track towards Lorg

Viewpoint Type: Type 1
Projection: Cylindrical
Viewpoint Grid Reference: NX 66214 99395
Viewpoint Elevation in mAOD: 261m

Direction of View: East
Horizontal Field Of View: 90 degrees
Vertical Field of View: 22 degrees
Distance to Site: 133m (Approx)

Enlargement Factor: 100% @ A1
Photographic Equipment: Canon 6D MKII & 50mm Lens
Date Taken: 27.09.2023 (Autumn)
Camera Height: 1.6m above ground

This image provides landscape and visual context only
View flat at a comfortable arm's length. If viewing on a screen
enlarge to full screen height.

